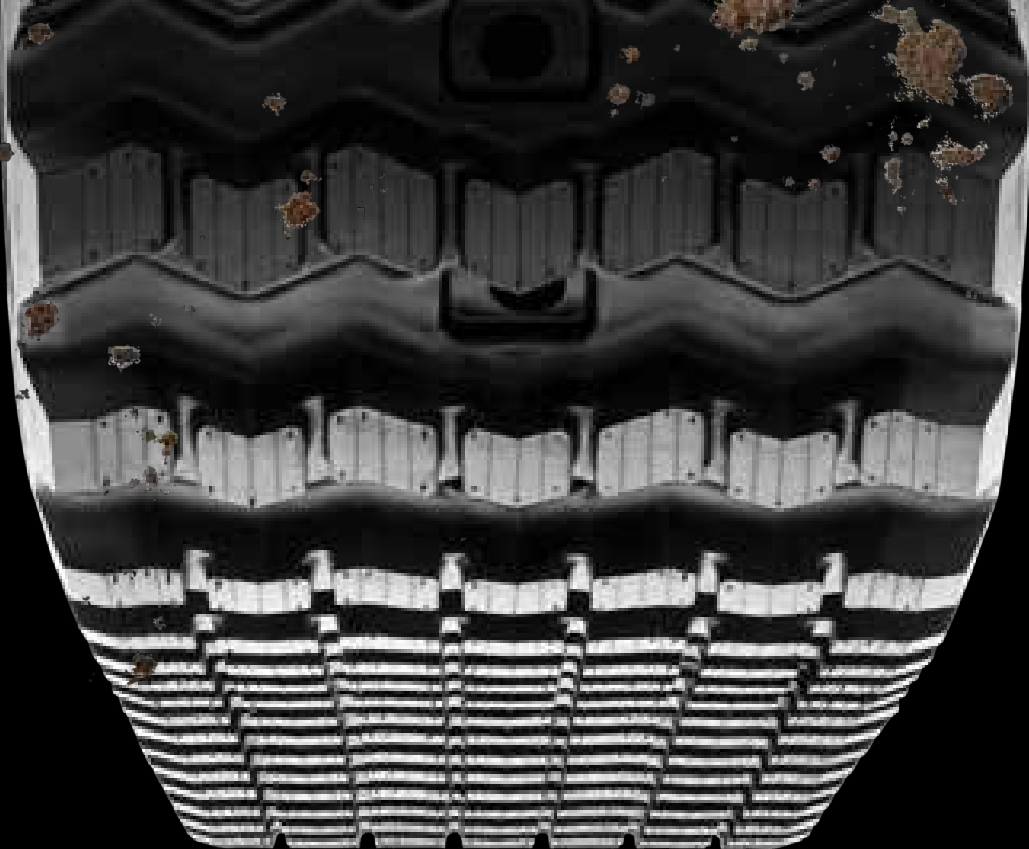


**TOUGH  
IS OUR  
WAY OF  
LIFE**

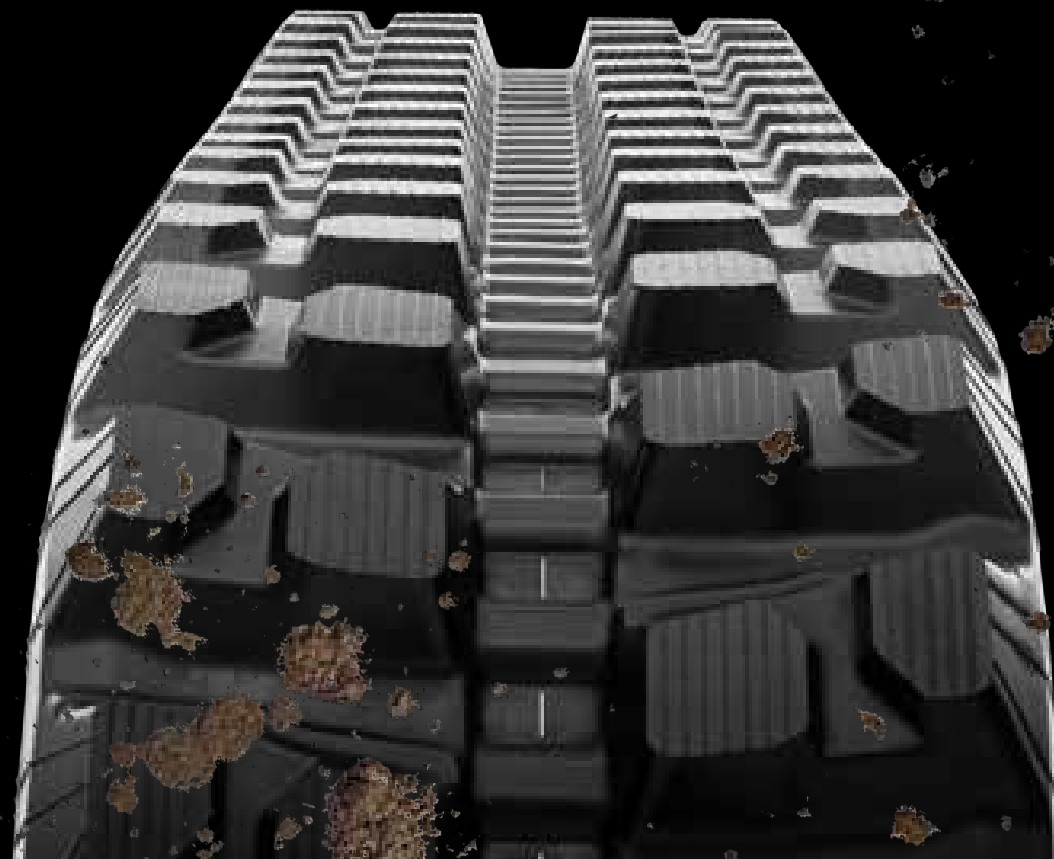


AUTHORIZED CAMSO TRACK DEALER

[camso.co](https://camso.co)



**2023 CONSTRUCTION  
TRACKS**



In today's economy, good business means making your money go a long way. Camso's goal is to create products that offer Lowest Operating Cost Solutions or LOCS. This is why we are committed to:

- Work closely with equipment owners and operators to ensure we understand the right product for each application
- Design and manufacture the most durable and reliable products available
- Offer our high performance line-up to optimize your productivity and machine performance
- Maximize product availability to increase uptime
- Give the best technical support and service in the industry with operator's safety in mind
- Ensure that equipment operators of our products get the most safe installation and operation guidelines
- Supply an industry leading non prorated warranty across all of the Camso track range

Find out more at [camso.co](http://camso.co) or contact your authorized local distributor.

# COMPLETE TRACK LINE

**MINI-EXCAVATORS**

**CAMSO MEX HXD**

**CAMSO MEX SD**

**COMPACT TRACK LOADERS**

**CAMSO CTL HXD**

**CAMSO CTL SD**

**CAMSO CTL SPROCKET**

**OTT TRACKS FOR SKID STEER LOADERS**

**CAMSO RUBBER OTT**

**CAMSO STEEL OTT**

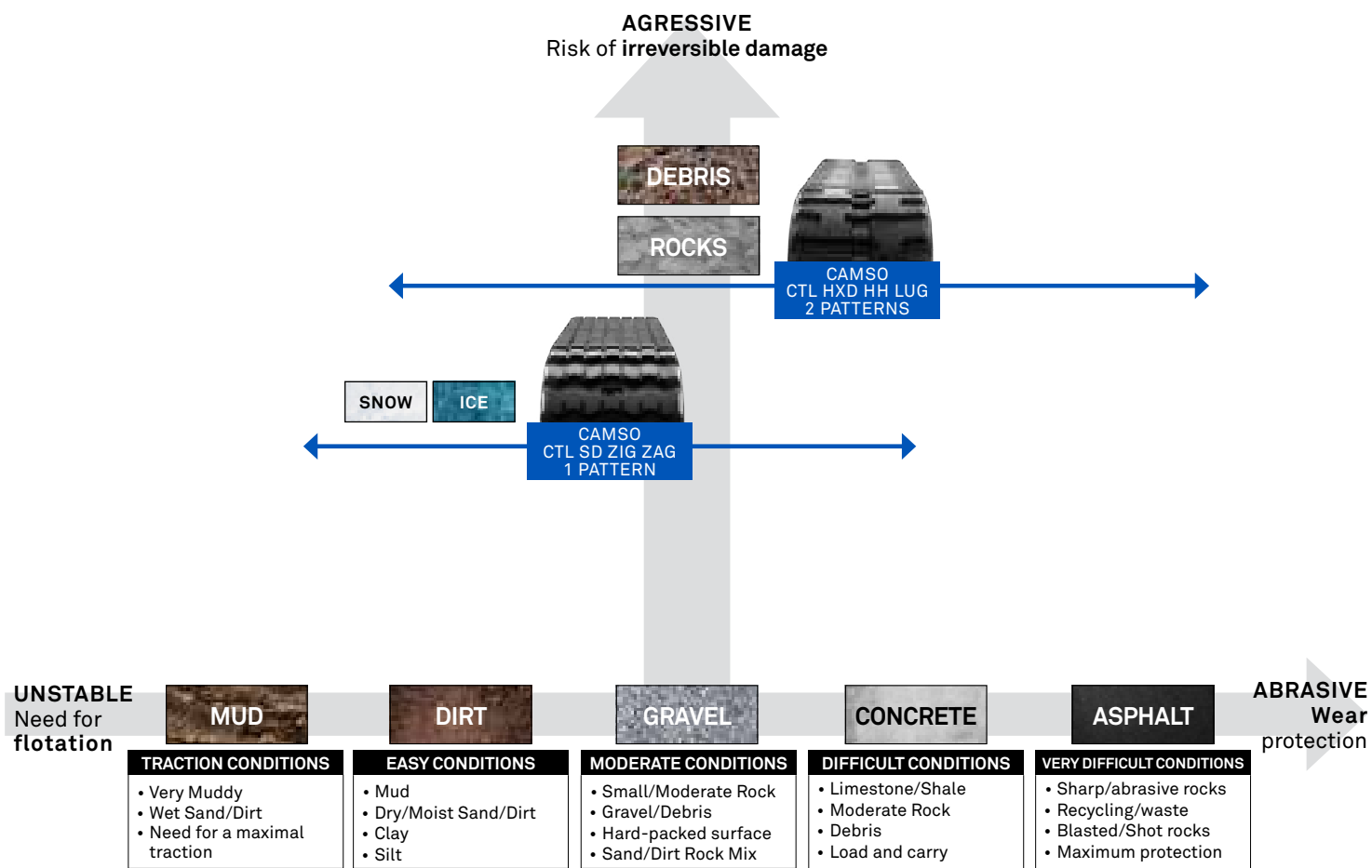
**MULTI-TERRAIN LOADERS**

**CAMSO MTL HXD**

**CARRIERS**

**CAMSO CARRIER HXD**

# CTL USAGE SEGMENTATION



# MINI-EXCAVATOR TRACKS

## EXCEPTIONAL SERVICE LIFE WITH SUPERIOR RESISTANCE TO IRREVERSIBLE DAMAGES

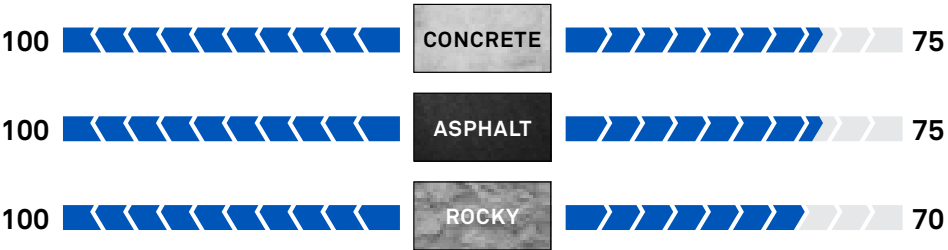


MINI-EXCAVATORS

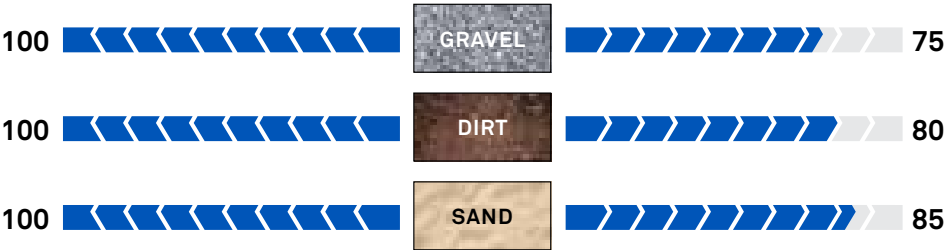
OVERALL LOCS GAUGE BY SURFACE  
TO OBTAIN THE LOWEST OPERATING COST SOLUTION ON THE MARKET

BEST FOR: Heavy Duty Applications requiring exceptional durability **MEX HXD** **SURFACE TYPE** **MEX SD** BEST FOR: Applications requiring traction in soft surfaces such as clay or mud

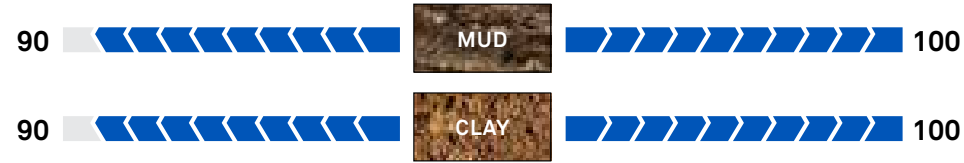
### HARD SURFACE



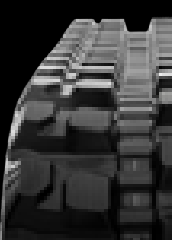
### MIXED SURFACE



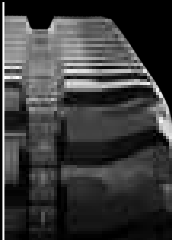
### SOFT SURFACE



**CAMSO MEX HXD**  
UP TO 50% MORE SERVICE LIFE  
**3500 / 42**  
HOURS MONTHS



**BEST WARRANTY OFFER**



**CAMSO MEX SD**  
UP TO 20% MORE SERVICE LIFE  
**2500 / 30**  
HOURS MONTHS

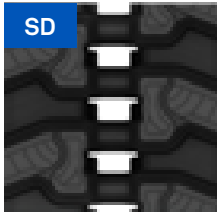


### ENGINEERED TREAD PATTERNS

HXD



SD

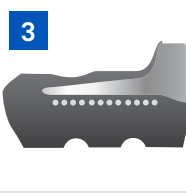


Tread pattern displayed may vary



#### Patented 3S internal metal core

- Prevents detracking
- Minimizes vibrations
- Improves ride quality



#### Curbshield technology with reinforced carcass edge

- Fortifies carcass protection
- Deters irreversible edge cuts
- Reduces internal components wear exposure



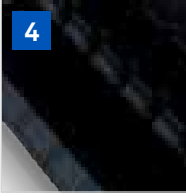
#### Self cleaning tread design

- Promotes lug-void cleanout for maximum traction
- More traction in reverse driving



#### Enhanced high-tensile, rubber-sealed steel cables

- Cable corrosion protection
- Strengthens carcass



#### Premium rubber compound and extra thick carcass

- Impact and damage resistance
- Extends service life



#### Optimized sprocket holes

- Reduces peak load on track and undercarriage parts; allows for sand and debris to pass through with ease

\*Check with your dealer for best choice for your application

# COMPACT TRACK LOADER TRACKS

## ULTIMATE VERSATILITY, REMARKABLE TRACTION, AND EXCELLENT DURABILITY IN A VARIETY OF APPLICATIONS



COMPACT TRACK LOADERS

OVERALL LOCS GAUGE BY SURFACE  
TO OBTAIN THE LOWEST OPERATING COST SOLUTION ON THE MARKET

BEST FOR: Heavy-duty applications requiring exceptional durability\*

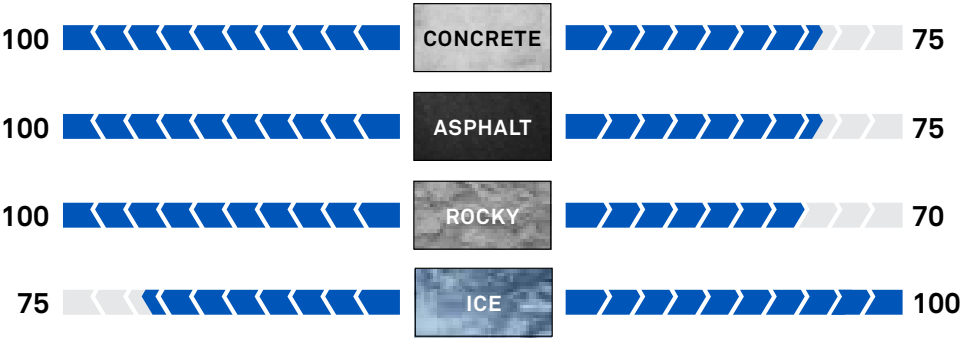
**CTL HXD**

SURFACE TYPE

**CTL SD**

BEST FOR: Applications requiring grip and traction\*

### HARD SURFACE



### MIXED SURFACE



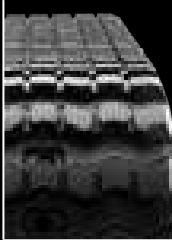
### SOFT SURFACE



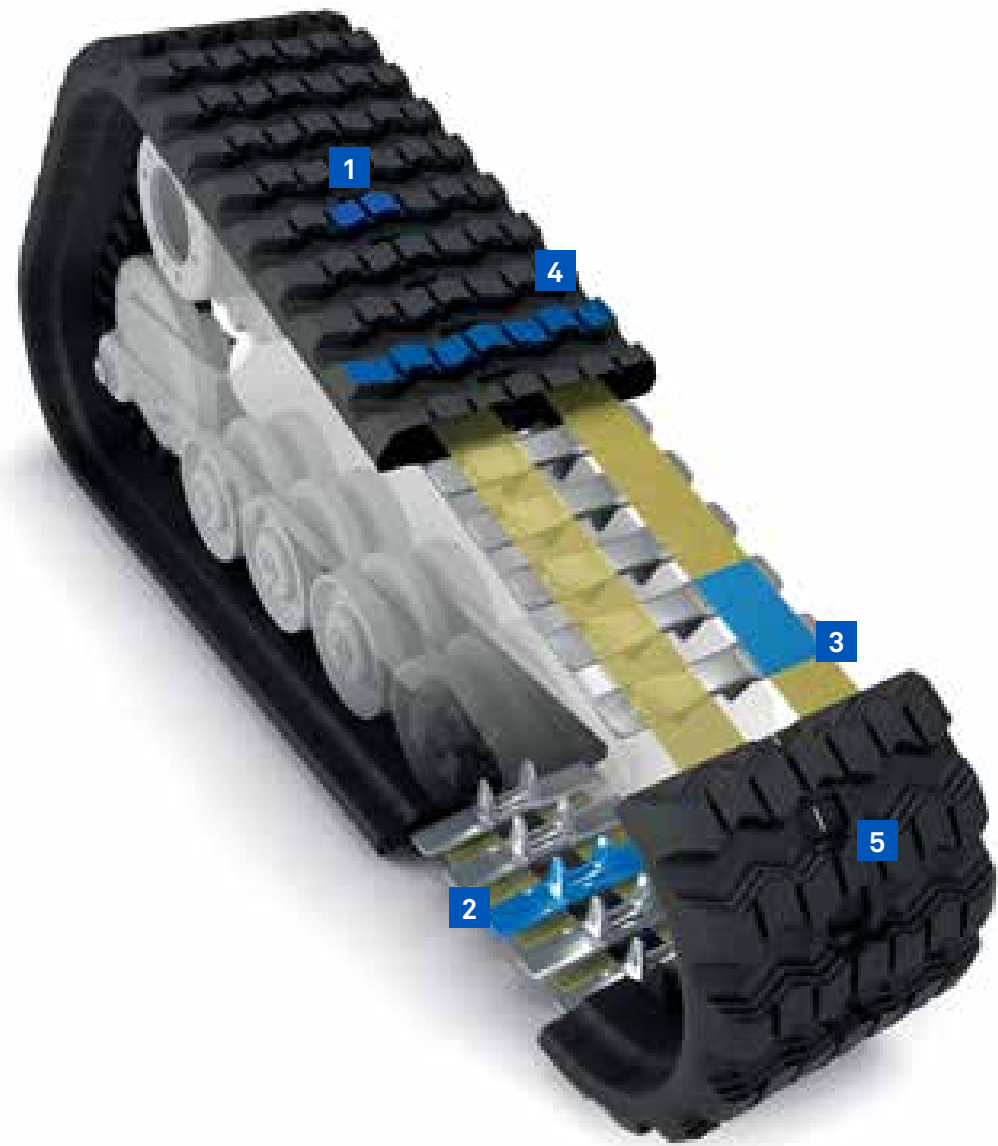
**CAMSO CTL HXD**  
UP TO 50% MORE SERVICE LIFE  
**2000 / 24**  
HOURS MONTHS



**BEST WARRANTY OFFER**



**CAMSO CTL SD**  
UP TO 20% MORE SERVICE LIFE  
**1500 / 18**  
HOURS MONTHS



### ENGINEERED TREAD PATTERNS

HXD

SD

Tread pattern displayed may vary



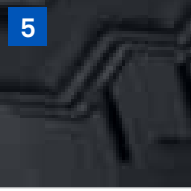
#### Single-cure technology

- Resists irreversible failure
- Increases durability
- Improves aesthetic appearance



#### Endless high-tensile, rubber-sealed steel cables

- Eliminates joint failures
- Improves cable breakage resistance
- Maximizes and strengthens carcass durability



#### Self cleaning tread design

- Promotes lug-void cleanout for maximum traction
- Improves productivity and help lower running costs



#### Forged metal cores with Trackguard technology

- Improves rolling path life
- Reduces internal component failures



#### Optimized tread profiles

- Provides excellent traction in any track application
- Provides low rolling resistance hence low energy consumption

\*Check with your dealer for the best track choice for your application



# COMPACT TRACK LOADER SPROCKETS OEM QUALITY AND PERFORMANCE AT AFTERMARKET PRICES



COMPACT TRACK  
LOADERS



- 1 Enhanced hardening with deeper penetration**  
Provides longer sprocket wear
- 2 Premium quality design and engineering**  
Meets the toughest OEM specifications
- 3 Optimized geometry and design**  
Ensures best fitment with tracks for longer track life

**BEST  
WARRANTY  
OFFER**

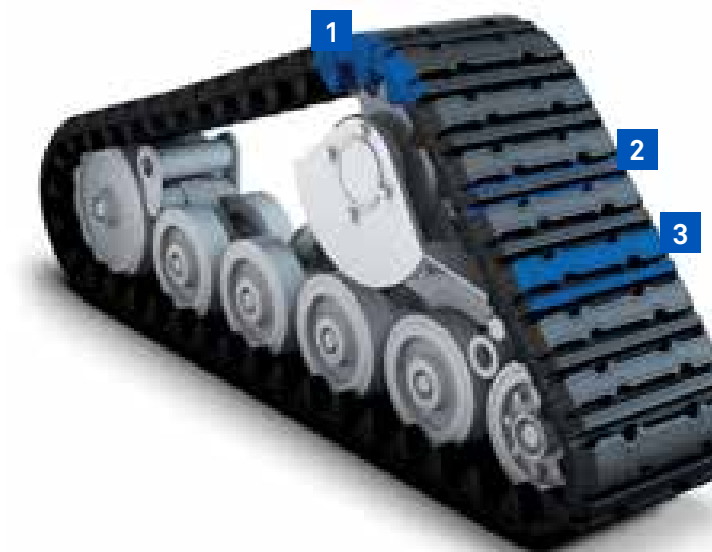
**CAMSO  
CTL SPROCKET**

**1500 / 18**  
HOURS MONTHS

# MULTI-TERRAIN LOADER TRACKS ENHANCED DURABILITY AND PROTECTION



MULTI TERRAIN  
LOADERS



- 1 Single-cure technology with superior internal casing structure**  
Designed to provide maximum drive lug bonding and utilisation life.
- 2 Heavy duty carcass construction**  
Increases lateral stability to eliminate detracking for more uptime
- 3 Versatile tread pattern matched with advanced rubber compound**  
Maintains good traction throughout tread life

## BEST WARRANTY OFFER

**CAMSO  
MTL HXD**

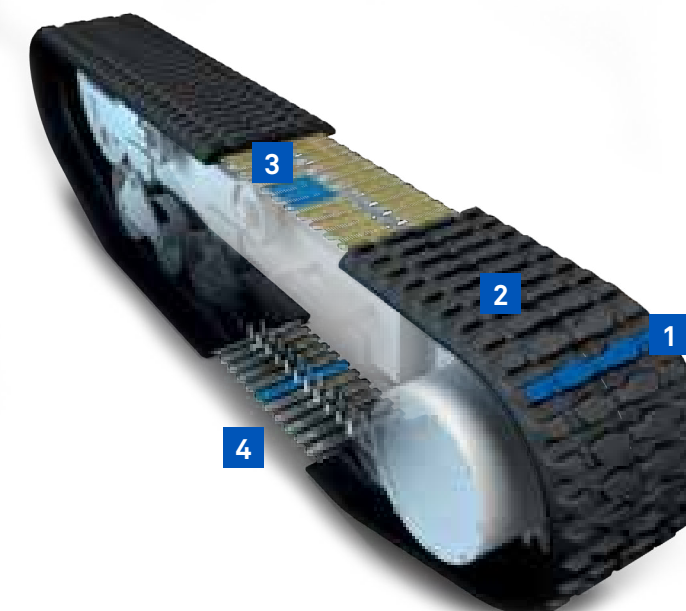
**50%**  
MORE  
SERVICE LIFE

**1200 / 14**  
HOURS MONTHS

# HIGH PERFORMANCE IN THE MOST SEVERE APPLICATIONS



CARRIERS



- 1 Straight bar tread pattern**  
Modernised tread design for higher performance and productivity
- 2 Next generation rubber compound**  
Promotes even tread wearing for long, predictable tread life
- 3 Endless steel cable technology**  
Protects from joint failures to maximize uptime
- 4 Trackguard iron core**  
Improves rolling path life for reduced failures and enhanced durability

## BEST WARRANTY OFFER

**CAMSO  
CARRIER**

**1000 / 12**  
HOURS MONTHS

OVER-THE-TYRE TRACKS

EASY MOUNT ATTACHMENTS FOR SKID STEERS THAT PROVIDE TRACTION AND FLOTATION ONLY CAPABLE WITH TRACKS



Easy-mounting design

Mount in a matter of minutes on most skid steer makes and models.



OVERALL LOCS GAUGE BY SURFACE  
TO OBTAIN THE LOWEST OPERATING COST SOLUTION ON THE MARKET

BEST FOR: Applications requiring extraordinary flotation and minimizing surface disturbance

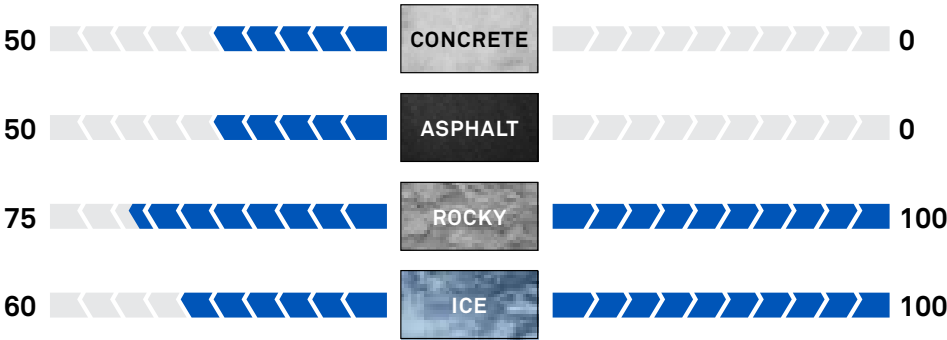
RUBBER

SURFACE TYPE

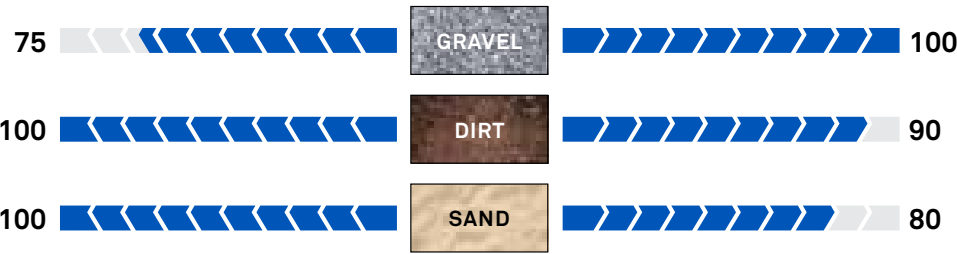
STEEL

BEST FOR: Applications requiring extreme durability and additional penetrating traction

HARD SURFACE



MIXED SURFACE



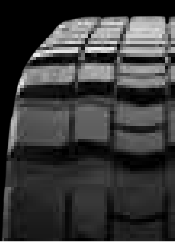
SOFT SURFACE



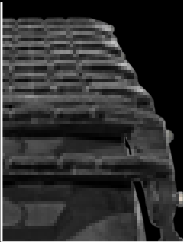
- 1 Full rubber track reinforced with steel core and cables**  
Allows smoother operation on asphalt, concrete and turf surfaces without damage or marking
- 2 Wide continuous rubber track footprint**  
Increases flotation by 5 times compared to tyres alone, and at least twice as much as standard steel tracks
- 3 Embedded forged metal core with engineered wing design**  
Ensures strength and rigidity to avoid detracking
- 4 Internal traction rib**  
Provides high traction between tyre and track and prevents tyre wear

\*Check with your dealer for best choice for your application

CAMSO  
RUBBER OTT  
12  
MONTHS



BEST  
WARRANTY  
OFFER

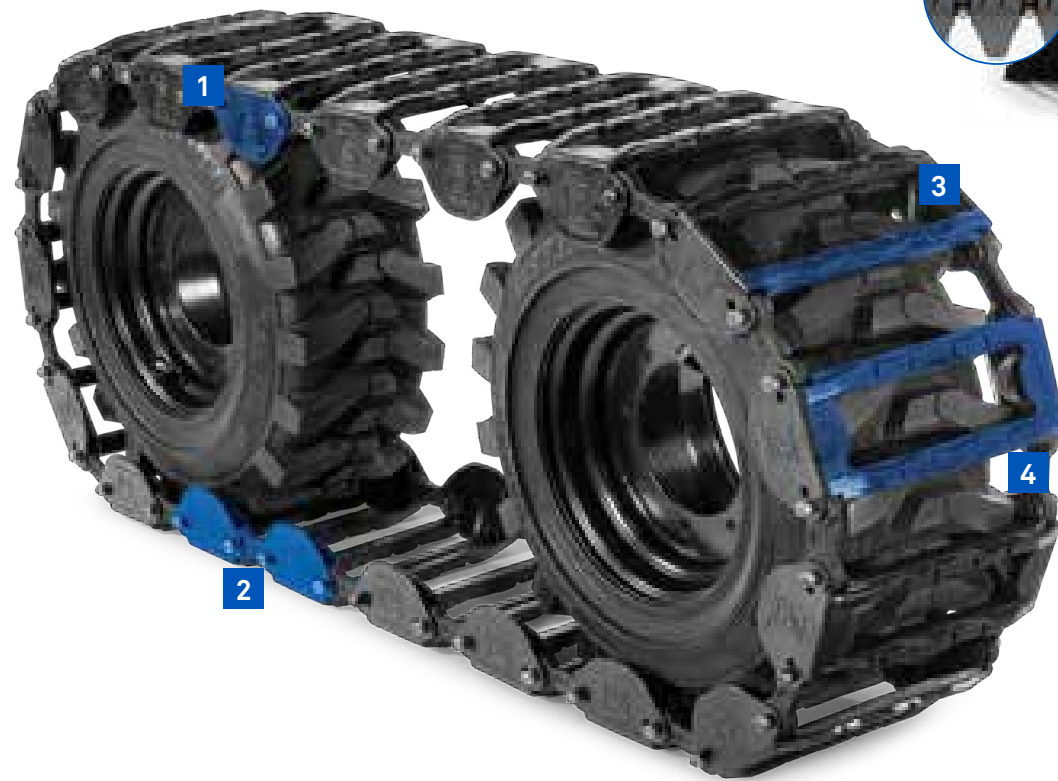
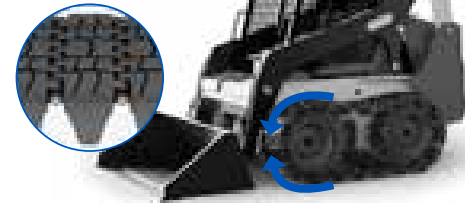


CAMSO  
STEEL OTT  
24  
MONTHS

CAMSO  
RUBBER OTT

### Easy-mounting design

Mount in a matter of minutes on most skid steer makes and models.



- 1 Case-hardened all-steel track construction**  
Maximizes durability and performance in severe applications
- 2 Customizable sizing with variable pitch design**  
Facilitates easy product selection and installation
- 3 Engineered high-traction tread bar**  
Provides enhanced all-around traction especially on open side slopes and unprecedented traction on ice
- 4 Wide-void design**  
Enhances debris and rock cleanout providing optimum traction on soft surfaces

\*Check with your dealer for best choice for your application

# CAMSO STEEL OTT



# THE CAMSO DIFFERENCE

At Camso we achieved an edge on our competition by differentiating ourselves in three specific ways:



## 1 CAMSO is a leading manufacturer of OEM brands

Camso is a proud supplier of the world’s best known construction brands. We have achieved our OEM positions through close collaboration, co-development, and validation with leading equipment manufacturers. Working with the OEM’s has pushed our products to new levels of toughness and represents a symbol of quality and performance end-users can trust.

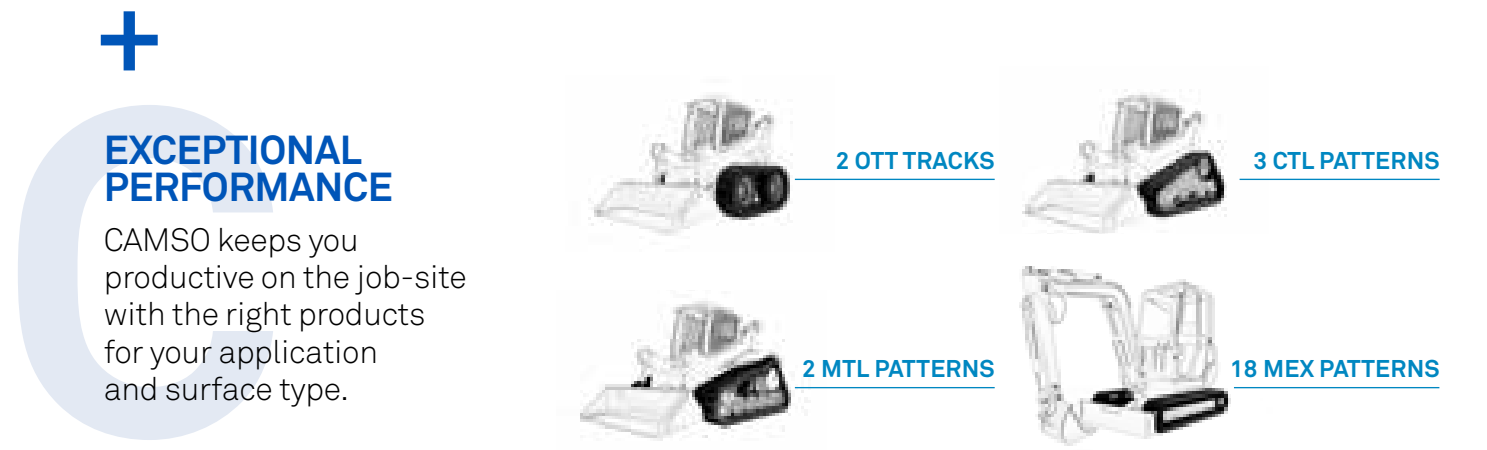
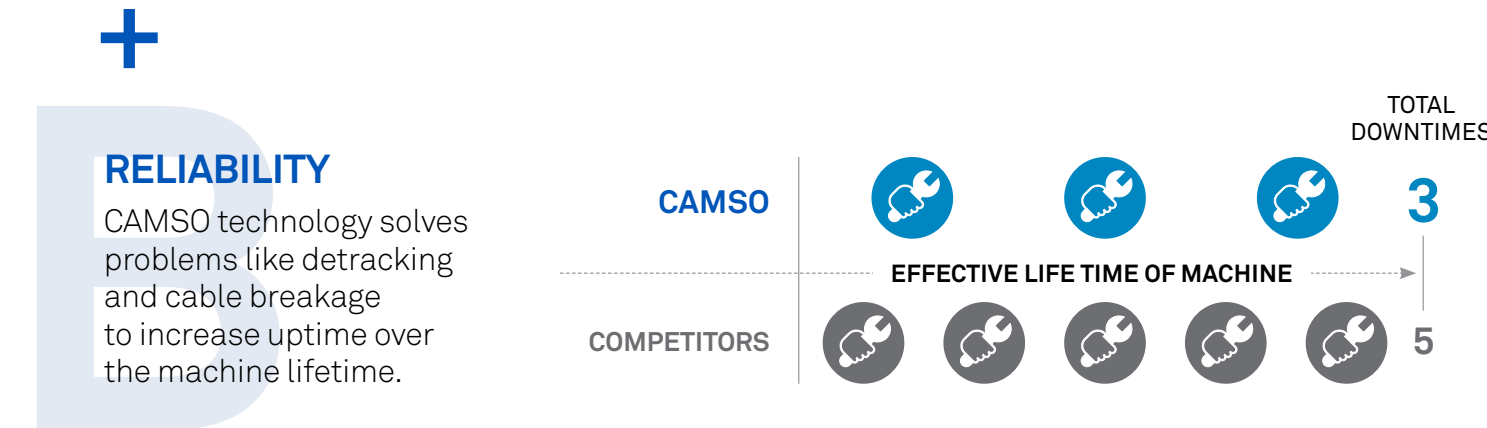
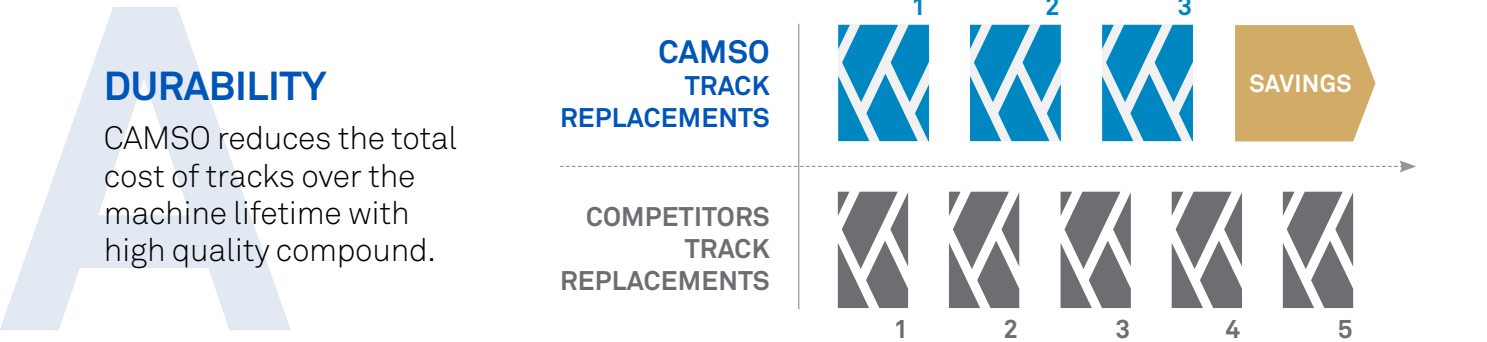
Many Camso products are also offered through various OEM aftermarket programs.

## 2 CAMSO offers the best warranty on the market

Actions speak louder than words. This is why we improved our terms and back all of our tracks with an industry leading non-prorated warranty on material and workmanship.

TRACK SERIES	MACHINE TYPE	MONTHS OF SERVICE		HOURS LIMIT	
		OLD	NEW	OLD	NEW
CAMSO SD series	CTL	13	18	1100	1500
	MEX	24	30	2000	2500
CAMSO HXD series	CTL	18	24	1500	2000
	MEX	36	42	3000	3500
	PAD's	N/A	36	N/A	3000
	MTL	14	14	1200	1200
	Rubber OTT	12	12	No limit	No limit
	Steel OTT	N/A	24	N/A	No limit

## 3 CAMSO Construction tracks offer lowest operating cost solution



**THE CAMSO DIFFERENCE** CAMSO tracks reduce the overall amount cost of ownership over your machines lifetime.



# CAMSO DIGITAL TOOLS

## CAMSO WEBSITE

Developed for those who work and play on a surface that isn't a road, Camso.co provides information and tools wherever and whenever users need them, no matter what device they're using: a phone, a tablet or a computer.

### camso.co

- Product selectors for OTR tyres, tracks and track systems for the Construction, Material Handling, Agriculture, and Powersports industries
- Dedicated content such as testimonials, videos, best practices and industry news
- Service and support information including warranty documents, data books and fitment guides
- Contact finder



## BEYOND ROAD CONNECT

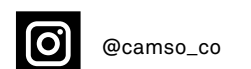
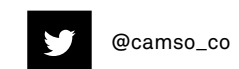
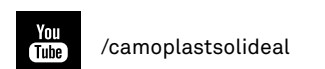
[connectbeyondroad.michelin.com](https://connectbeyondroad.michelin.com) or on the App Store

Beyond Road connect, previously known as the Camso Connect, is a tool that facilitates the explanation of the features and benefits of our Material Handling, Construction and Agricultural products.

- Accessible off-line with the iOS and Android app version
- Unique Beyond Road product selector
- Complete product information, including product sheets, client testimonials, technical field tests
- 360 views of products and action videos
- Product support information
- Available in 8 languages



## CONNECT WITH US FOR EXCLUSIVE CONTENT



camso.co

