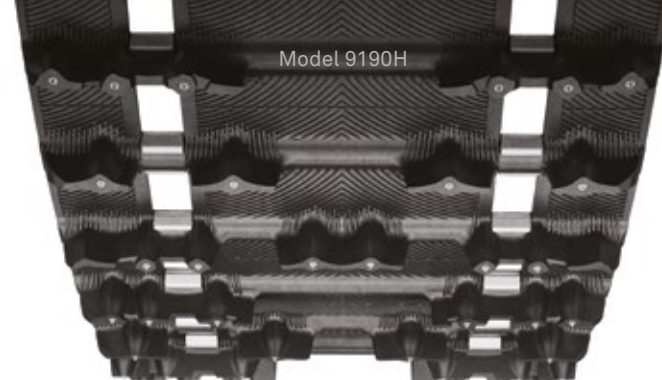


Model 9077H



Model 9190H

**CAMSO**

# ICE Ripper XT

Handles and holds

The original factory pre-studded track is a proven performer. With a design that gives riders outstanding handling and stability, it's a true classic.

- Factory pre-studded for improved traction and control
- 1.25" lug height for improved traction and stability
- RipSaw-based attack angled lugs for excellent forward and lateral bite

**CAMSO**

# ICE Attak XT

Nailed to the trail

A highly aggressive trail model design featuring hundreds of sharp-tip lug studs, giving riders traction and control they can count on.

- Factory pre-studded for improved traction and control
- Lug design delivers better traction than the ICE Ripper XT
- 1.22" lug height provides better handling and stability
- Optimized rubber compound for superior traction on groomed trail

MODEL	DIMENSIONS	LUG HEIGHT	WEIGHT	DRIVE PITCH	NB. STUDS	CLIP CONFIG.	MODEL	DIMENSIONS	LUG HEIGHT	WEIGHT	DRIVE PITCH	NB. STUDS	CLIP CONFIG.
9077H	15" x 121" (38 cm x 307 cm)	1.25" (32 mm)	39 lb. (17.75 kg)	2.52" (64 mm)	256	Full ▲ ■	9190H	15" x 120" (38 cm x 305 cm)	1.22" (31 mm)	37 lb. (16.75 kg)	2.86" (73 mm)	224	Full ▲ ■
9164H	15" x 120" (38 cm x 305 cm)	1.25" (32 mm)	36 lb. (16.25 kg)	2.86" (73 mm)	224	Full ▲ ■	9191H	15" x 137" (38 cm x 348 cm)	1.22" (31 mm)	42 lb. (19 kg)	2.86" (73 mm)	256	Full ▲ ■
							9192H	15" x 146" (38 cm x 371 cm)	1.22" (31 mm)	44 lb. (20 kg)	2.86" (73 mm)	272	Full ▲ ■
							9200H	15" x 121" (38 cm x 307 cm)	1.22" (31 mm)	40 lb. (18.25 kg)	2.52" (64 mm)	256	Full ▲ ■
							9201H	15" x 128" (38 cm x 325 cm)	1.22" (31 mm)	42 lb. (19 kg)	2.52" (64 mm)	272	Full ▲ ■
							9202H	15" x 136" (38 cm x 345 cm)	1.22" (31 mm)	45 lb. (20.5 kg)	2.52" (64 mm)	288	Full ▲ ■
							9203H	15" x 144" (38 cm x 365 cm)	1.22" (31 mm)	47 lb. (21.25 kg)	2.52" (64 mm)	304	Full ▲ ■
							9236H	15" x 129" (38 cm x 328 cm)	1.22" (31 mm)	39 lb. (17.75 kg)	2.86" (73 mm)	240	Full ▲ ■