

# SOLIDEAL PON 555 NM

BY CAMSO



PRESS-ON  
TIRES



## NON-MARKING WITH MAXIMUM LIFE FOR MEDIUM INTENSITY APPLICATIONS

Enhanced non-marking natural rubber compound ensures clean working environment, low rolling resistance and improved thermal performance. Especially designed to provide maximum lifespan for medium intensity applications requiring non-marking press-on tires.

[camso.co](http://camso.co)

## PERFORMANCE

INTENSITY



ENERGY SAVINGS



TIRE LIFE



# PRESS-ON TIRES

# SOLIDEAL PON 555 NM

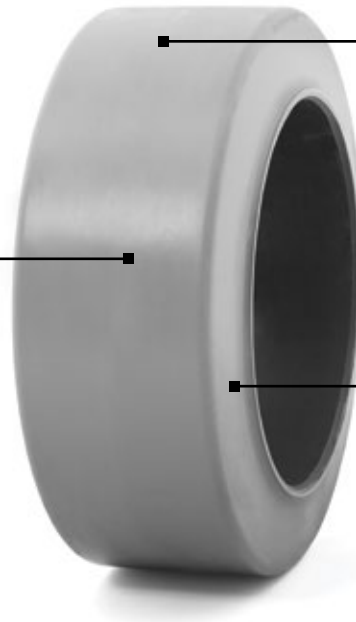
BY CAMSO



TIRE SIZES <sup>(1)</sup>				
10 x 4 x 6 1/2	14 x 5 x 10	16 1/4 x 6 x 11 1/4	21 x 7 x 15	22 x 12 x 16
10 x 5 x 6 1/2	16 x 5 x 10 1/2	16 1/4 x 7 x 11 1/4	21 x 8 x 15	22 x 14 x 16
10 1/2 x 5 x 6 1/2	16 x 6 x 10 1/2	18 x 5 x 12 1/8	21 x 9 x 15	28 x 10 x 22
12 x 4 1/2 x 8	16 x 7 x 10 1/2	18 x 6 x 12 1/8	22 x 7 x 16	28 x 12 x 22
12 x 5 1/2 x 8	15 x 4 x 11 1/4	18 x 7 x 12 1/8	22 x 8 x 16	405 / 130 - 305
13 1/2 x 5 1/2 x 8	15 x 5 x 11 1/4	18 x 8 x 12 1/8	22 x 9 x 16	425 / 150 - 305
14 x 4 1/2 x 8	16 1/4 x 5 x 11 1/4	18 x 9 x 12 1/8	22 x 10 x 16	840 / 350 - 559

## LOW ROLLING RESISTANCE COMPOUND

- Increases energy efficiency and thermal performance



## NON-MARKING NATURAL RUBBER COMPOUND

- Prevents visible marks on the floor, ensuring a clean working environment
- Reduces chunking and cutting

## UNIQUE TWO-STAGE CONSTRUCTION

- Inner thermal-layer reduces heat build-up for enhanced tire life

### Remarks

(1) Tolerances on wheeldiameter • Code designated sizes (inch sizes): nominal rim diameter +0.005"/-0" • Metric sizes (mm sizes): h11 according to ISO/R286 • Surface roughness Ra < 6.3 µm • Chamfer 5 mm wide @ 30°

For the Magnum Smooth and Magnum Traction Non-Marking tires, please check with your Camso representative or your nearest Camso dealer.

[camso.co](http://camso.co)

