

WE START WE START  
WHERE WHERE  
THE ROAD THE ROAD  
ENDS ENDS



DATASHEET | MATERIAL HANDLING  
**PRESS-ON TIRES**

# PRESS-ON TIRES

## TECHNICAL DATA

TIRE SIZE <sup>1</sup>	BRAND	TREAD PATTERN		RUBBER COMPOUND			ACTUAL TIRE DIMENSIONS			LOAD CAPACITY (lb.) <sup>2</sup>										
		Smooth	Traction	Black	Non-marking	NMA5	Overall diameter (in.)	Overall width (in.)	Replacement overall diameter <sup>5</sup> (in.)	Counterbalanced lift trucks						Other vehicles <sup>3</sup>				Static 0 mph
										Up to 6 mph		Up to 10 mph		Up to 16 mph		4 mph	6 mph	10 mph	16 mph	
										Load wheel	Steering wheel	Load wheel	Steering wheel	Load wheel	Steering wheel					
<b>5"</b>																				
9 X 5 X 5	SOLIDEAL PON 555	■		■			9.0	5.0	7.9	2115	1740	1885	1575	1530	1255	2115	1740	1500	1135	3195
<b>6 1/4"</b>																				
10 X 4 X 6 1/4	SOLIDEAL PON 555	■		■			9.9	4.0	8.9	1720	1410	1545	1300	1245	1025	1720	1410	1235	925	2610
10 X 5 X 6 1/4	SOLIDEAL PON 555	■		■			10.0	5.0	8.9	2270	1850	2015	1700	1640	1345	2270	1850	1610	1215	3415
<b>6 1/2"</b>																				
10 X 4 X 6 1/2	SOLIDEAL PON 775	■		■		■	10.0	4.0	9.0	1720	1410	1530	1290	1245	1025	1720	1410	1225	915	2590
10 X 4 X 6 1/2	SOLIDEAL PON 555	■		■	■		9.9	4.0	9.0	1720	1410	1530	1290	1245	1025	1720	1410	1225	915	2590
10 X 4 3/4 X 6 1/2	SOLIDEAL PON 555	■		■			10.0	4.8	9.0	2095	1720	1865	1565	1520	1245	2095	1720	1490	1125	3155
10 X 4 15/16 X 6 1/2	SOLIDEAL PON 555	■		■			10.1	4.9	9.1	2250	1840	1995	1675	1620	1335	2240	1840	1600	1200	3375
10 X 5 X 6 1/2	SOLIDEAL PON 775	■		■		■	10.0	5.0	9.0	2225	1830	1995	1675	1620	1335	2225	1830	1600	1200	3375
10 X 5 X 6 1/2	SOLIDEAL PON 550		■	■	■		9.9	5.0	9.0	2225	1830	1995	1675	1620	1335	2225	1830	1600	1200	3375
10 X 5 X 6 1/2	SOLIDEAL PON 555	■		■	■		9.9	5.0	9.0	2225	1830	1995	1675	1620	1335	2225	1830	1600	1200	3375
10 1/2 X 5 X 6 1/2	SOLIDEAL PON 775	■		■		■	10.5	5.0	9.3	2360	1940	2115	1785	1720	1410	2360	1940	1700	1270	3585
10 1/2 X 5 X 6 1/2	SOLIDEAL PON 555	■		■	■		10.5	5.0	9.3	2360	1940	2115	1785	1720	1410	2360	1940	1700	1270	3585
10 1/2 X 6 X 6 1/2	SOLIDEAL PON 555	■		■			10.5	6.0	9.3	2955	2425	2625	2205	2140	1755	2955	2425	2095	1575	4440
<b>8"</b>																				
12 X 4 X 8	SOLIDEAL PON 555	■		■			12.0	4.0	10.8	1995	1640	1785	1500	1455	1190	1995	1640	1995	1070	3010
12 X 4 1/2 X 8	SOLIDEAL PON 775	■		■		■	12.0	4.5	10.8	2295	1885	2050	1720	1665	1365	2295	1885	1640	1235	3470
12 X 4 1/2 X 8	SOLIDEAL PON 555	■		■	■		12.0	4.5	10.8	2295	1885	2050	1720	1665	1365	2295	1885	1640	1235	3470
12 X 5 X 8	SOLIDEAL PON 555	■		■			12.0	5.0	10.8	2625	2160	2350	1960	1905	1565	2625	2160	1875	1400	3955
12 X 5 1/2 X 8	SOLIDEAL PON 555	■		■	■		12.0	5.5	10.8	2955	2425	2635	2215	2140	1755	2955	2425	2105	1575	4455
13 X 4 1/2 X 8	SOLIDEAL PON 555	■		■			13.0	4.5	11.5	2470	2030	2205	1850	1795	1475	2470	2030	1765	1325	3715
13 1/2 X 4 1/2 X 8	SOLIDEAL PON 555	■		■			13.5	4.5	11.8	2535	2070	2260	1895	1840	1510	2535	2070	1810	1355	3815
13 1/2 X 5 1/2 X 8	SOLIDEAL PON 775	■		■		■	13.5	5.5	11.9	3330	2735	2965	2490	2415	1975	3330	2735	2380	1785	5025
13 1/2 X 5 1/2 X 8	SOLIDEAL PON 550		■	■	■		13.5	5.5	11.9	3330	2735	2965	2490	2415	1975	3330	2735	2380	1785	5025
13 1/2 X 5 1/2 X 8	SOLIDEAL PON 555	■		■	■		13.5	5.5	11.8	3330	2735	2965	2490	2415	1975	3330	2735	2380	1785	5025

Blue sections represent hub size

# PRESS-ON TIRES

## TECHNICAL DATA

TIRE SIZE <sup>1</sup>	BRAND	TREAD PATTERN		RUBBER COMPOUND			ACTUAL TIRE DIMENSIONS			LOAD CAPACITY (lb.) <sup>2</sup>										
		Smooth	Traction	Black	Non-marking	NMA5	Overall diameter (in.)	Overall width (in.)	Replacement overall diameter <sup>5</sup> (in.)	Counterbalanced lift trucks						Other vehicles <sup>3</sup>				Static 0 mph
										Up to 6 mph		Up to 10 mph		Up to 16 mph		4 mph	6 mph	10 mph	16 mph	
		Load wheel	Steering wheel	Load wheel	Steering wheel	Load wheel	Steering wheel													
14 X 4 1/2 X 8	SOLIDEAL PON 775	■		■		■	14.1	4.5	12.2	2580	2115	2305	1930	1875	1530	2580	2115	1830	1380	3880
14 X 4 1/2 X 8	SOLIDEAL PON 550		■	■	■		14.0	4.5	12.3	2580	2115	2305	1930	1875	1530	2580	2115	1830	1380	3880
14 X 4 1/2 X 8	SOLIDEAL PON 555	■		■	■		13.9	4.5	12.2	2580	2115	2305	1930	1875	1530	2580	2115	1830	1380	3880
<b>10"</b>																				
14 X 5 X 10	SOLIDEAL PON 775	■		■		■	14.1	5.0	12.9	2945	2415	2635	2205	2140	1755	2945	2415	2105	1575	4455
14 X 5 X 10	SOLIDEAL PON 550		■	■	■		14.0	5.0	12.9	2945	2415	2635	2205	2140	1755	2945	2415	2105	1575	4455
14 X 5 X 10	SOLIDEAL PON 555	■		■	■		13.9	5.0	12.9	2945	2415	2635	2205	2140	1755	2945	2415	2105	1575	4455
15 1/2 X 5 X 10	SOLIDEAL PON 550		■	■			15.6	5.0	13.9	3240	2670	2900	2425	2360	1930	3240	2670	2315	1740	4905
15 1/2 X 6 X 10	SOLIDEAL PON 555	■		■			15.6	5.0	13.9	4125	3375	3670	3085	2985	2445	4125	3375	2930	2070	6240
<b>10 1/2"</b>																				
16 X 5 X 10 1/2	SOLIDEAL PON 775	■		■		■	16.0	5.0	14.4	3330	2735	2965	2490	2415	1975	3330	2735	2380	1775	5015
16 X 5 X 10 1/2	SOLIDEAL PON 550		■	■	■		16.0	5.0	14.4	3330	2735	2965	2490	2415	1975	3330	2735	2380	1775	5015
16 X 5 X 10 1/2	SOLIDEAL PON 555	■		■	■		15.9	5.0	14.3	3330	2735	2965	2490	2415	1975	3330	2735	2380	1775	5015
16 X 6 X 10 1/2	SOLIDEAL PON 775	■		■		■	16.0	6.0	14.4	4210	3460	3770	3165	3065	2515	4210	3460	3000	2250	6340
16 X 6 X 10 1/2	SOLIDEAL PON 550		■	■	■		16.0	6.0	14.4	4210	3460	3770	3165	3065	2515	4210	3460	3000	2250	6340
16 X 6 X 10 1/2	SOLIDEAL PON 555	■		■	■		15.9	6.0	14.3	4210	3460	3770	3165	3065	2515	4210	3460	3000	2250	6340
16 X 7 X 10 1/2	SOLIDEAL PON 775	■		■		■	16.0	7.0	14.4	5125	4210	4565	3835	3715	3040	5125	4210	3660	2745	7715
16 X 7 X 10 1/2	SOLIDEAL PON 550		■	■	■		16.2	7.0	14.5	5125	4210	4565	3835	3715	3040	5125	4210	3660	2745	7715
16 X 7 X 10 1/2	SOLIDEAL PON 555	■		■	■		16.0	7.0	14.4	5125	4210	4565	3835	3715	3040	5125	4210	3660	2745	7715
16 X 7 X 10 1/2	SOLIDEAL PON 552		■*	■			-	-	-	5125	4210	4565	3835	3715	3040	5125	4210	3660	2745	7715
<b>11 1/4"</b>																				
15 X 4 X 11 1/4	SOLIDEAL PON 555	■		■	■		15.0	4.0	13.9	2350	1930	2095	1765	1710	1400	2350	1930	1675	1255	3540
15 X 5 X 11 1/4	SOLIDEAL PON 775	■		■		■	15.1	5.0	14.0	3065	2515	2735	2295	2225	1830	3065	2515	2185	1640	4630
15 X 5 X 11 1/4	SOLIDEAL PON 550		■	■	■		15.0	5.0	14.0	3065	2515	2735	2295	2225	1830	3065	2515	2185	1640	4630
15 X 5 X 11 1/4	SOLIDEAL PON 555	■		■	■		14.9	5.0	13.9	3065	2515	2735	2295	2225	1830	3065	2515	2185	1640	4630
15 X 6 X 11 1/4	SOLIDEAL PON 555	■		■			15.0	6.0	13.9	3780	3110	3375	2835	2745	2250	3780	3110	2700	2030	5720

Blue sections represent hub size

# PRESS-ON TIRES

## TECHNICAL DATA

TIRE SIZE <sup>1</sup>	BRAND	TREAD PATTERN		RUBBER COMPOUND			ACTUAL TIRE DIMENSIONS			LOAD CAPACITY (lb.) <sup>2</sup>										
		Smooth	Traction	Black	Non-marking	NMAS	Overall diameter (in.)	Overall width (in.)	Replacement overall diameter <sup>5</sup> (in.)	Counterbalanced lift trucks						Other vehicles <sup>3</sup>				Static 0 mph
										Up to 6 mph		Up to 10 mph		Up to 16 mph		4 mph	6 mph	10 mph	16 mph	
										Load wheel	Steering wheel	Load wheel	Steering wheel	Load wheel	Steering wheel					
16 1/4 X 5 X 11 1/4	SOLIDEAL PON 775	■		■		■	16.3	5.0	14.8	3375	2755	3000	2525	2435	1995	3375	2755	2405	1795	5070
16 1/4 X 5 X 11 1/4	SOLIDEAL PON 550		■	■	■		16.3	5.0	14.8	3375	2755	3000	2525	2435	1995	3375	2755	2405	1795	5070
16 1/4 X 5 X 11 1/4	SOLIDEAL PON 555	■		■	■		16.1	5.0	14.7	3375	2755	3000	2525	2435	1995	3375	2755	2405	1795	5070
16 1/4 X 6 X 11 1/4	SOLIDEAL PON 775	■		■		■	16.3	6.0	14.8	4235	3485	3780	3175	3075	2515	4235	3485	3020	2260	6370
16 1/4 X 6 X 11 1/4	SOLIDEAL PON 550		■	■	■		16.2	6.0	14.7	4235	3485	3780	3175	3075	2515	4235	3485	3020	2260	6370
16 1/4 X 6 X 11 1/4	SOLIDEAL PON 555	■		■	■		16.1	6.0	14.7	4235	3485	3780	3175	3075	2515	4235	3485	3020	2260	6370
16 1/4 X 7 X 11 1/4	SOLIDEAL PON 775	■		■		■	16.3	7.0	14.8	5125	4190	4540	3825	3705	3040	5125	4190	3640	2745	7715
16 1/4 X 7 X 11 1/4	SOLIDEAL PON 550		■	■	■		16.3	7.0	14.8	5125	4190	4540	3825	3705	3040	5125	4190	3640	2745	7715
16 1/4 X 7 X 11 1/4	SOLIDEAL PON 555	■		■	■		16.3	7.0	14.8	5125	4190	4540	3825	3705	3040	5125	4190	3640	2745	7715
16 1/4 X 8 X 11 1/4	SOLIDEAL PON 555	■		■			16.3	8.0	14.8	5985	4905	5335	4475	4330	3560	5975	4905	4265	3195	9015
<b>12 1/8"</b>																				
17 X 5 X 12 1/8	SOLIDEAL PON 555	■		■			17.0	5.0	15.6	3460	2845	3085	2600	2525	2060	3460	2845	2470	1865	5245
17 X 6 X 12 1/8	SOLIDEAL PON 550		■	■			17.0	5.0	15.6	4365	3595	3900	3275	3165	2600	4365	3595	3110	2350	6615
18 X 5 X 12 1/8	SOLIDEAL PON 550		■	■	■		18.2	5.0	16.3	3615	2975	3240	2710	2635	2160	3615	2975	2580	1940	5465
18 X 5 X 12 1/8	SOLIDEAL PON 555	■		■	■		18.0	5.0	16.2	3615	2975	3240	2710	2635	2160	3615	2975	2580	1940	5465
18 X 6 X 12 1/8	SOLIDEAL PON 775	■		■		■	18.0	6.0	16.2	4630	3790	4125	3470	3360	2755	4630	3790	3305	2470	6955
18 X 6 X 12 1/8	SOLIDEAL PON 550		■	■	■		18.0	6.0	16.3	4630	3790	4125	3470	3360	2755	4630	3790	3305	2470	6955
18 X 6 X 12 1/8	SOLIDEAL PON 555	■		■	■		17.8	6.0	16.2	4630	3790	4125	3470	3360	2755	4630	3790	3305	2470	6955
18 X 7 X 12 1/8	SOLIDEAL PON 775	■		■		■	18.1	7.0	16.3	5620	4630	5025	4210	4090	3350	5620	4630	4010	3020	8500
18 X 7 X 12 1/8	SOLIDEAL PON 550		■	■	■		18.0	7.0	16.3	5620	4630	5025	4210	4090	3350	5620	4630	4010	3020	8500
18 X 7 X 12 1/8	SOLIDEAL PON 555	■		■	■		18.0	7.0	16.2	5620	4630	5025	4210	4090	3350	5620	4630	4010	3020	8500
18 X 8 X 12 1/8	SOLIDEAL PON 775	■		■		■	18.0	8.0	16.2	6615	5455	5910	4960	4805	3945	6615	5455	4740	3540	9985
18 X 8 X 12 1/8	SOLIDEAL PON 550		■	■	■		18.0	8.0	16.3	6615	5455	5910	4960	4805	3945	6615	5455	4740	3540	9985
18 X 8 X 12 1/8	SOLIDEAL PON 555	■		■	■		17.8	8.0	16.2	6615	5455	5910	4960	4805	3945	6615	5455	4740	3540	9985
18 X 9 X 12 1/8	SOLIDEAL PON 550		■	■	■		18.0	9.0	16.2	7605	6285	6810	5730	5535	4540	7605	6285	5455	4090	11530
18 X 9 X 12 1/8	SOLIDEAL PON 555	■		■	■		17.8	9.0	16.1	7605	6285	6810	5730	5535	4540	7605	6285	5455	4090	11530

Blue sections represent hub size

# PRESS-ON TIRES

## TECHNICAL DATA

TIRE SIZE <sup>1</sup>	BRAND	TREAD PATTERN		RUBBER COMPOUND			ACTUAL TIRE DIMENSIONS			LOAD CAPACITY (lb.) <sup>2</sup>										
		Smooth	Traction	Black	Non-marking	NMA5	Overall diameter (in.)	Overall width (in.)	Replacement overall diameter <sup>5</sup> (in.)	Counterbalanced lift trucks						Other vehicles <sup>3</sup>				Static 0 mph
										Up to 6 mph		Up to 10 mph		Up to 16 mph		4 mph	6 mph	10 mph	16 mph	
										Load wheel	Steering wheel	Load wheel	Steering wheel	Load wheel	Steering wheel					
<b>15"</b>																				
21 X 6 X 15	SOLIDEAL PON 550		■	■			21.2	6.0	19.3	5180	4255	4630	3890	3770	3085	5180	4255	3705	2765	7805
21 X 7 X 15	SOLIDEAL PON 775	■		■		■	21.1	7.0	19.2	6340	5180	5645	4740	4595	3770	6340	5180	4520	3395	9555
21 X 7 X 15	SOLIDEAL PON 550		■	■	■		21.0	7.0	19.2	6340	5180	5645	4740	4595	3770	6340	5180	4520	3395	9555
21 X 7 X 15	SOLIDEAL PON 555	■		■	■		20.8	7.0	19.3	6340	5180	5645	4740	4595	3770	6340	5180	4520	3395	9555
21 X 8 X 15	SOLIDEAL PON 775	■		■		■	21.0	8.0	19.2	7440	6120	6670	5600	5410	4440	7440	6120	5345	3990	11245
21 X 8 X 15	SOLIDEAL PON 550		■	■	■		21.0	8.0	19.2	7440	6120	6670	5600	5410	4440	7440	6120	5345	3990	11245
21 X 8 X 15	SOLIDEAL PON 555	■		■	■		20.8	8.0	19.2	7440	6120	6670	5600	5410	4440	7440	6120	5345	3990	11245
21 X 9 X 15	SOLIDEAL PON 775	■		■		■	21.0	9.0	19.2	8600	7055	7660	6435	6240	5115	8600	7055	6120	4610	12985
21 X 9 X 15	SOLIDEAL PON 550		■	■	■		21.0	9.0	19.3	8600	7055	7660	6435	6240	5115	8600	7055	6120	4610	12985
21 X 9 X 15	SOLIDEAL PON 555	■		■	■		20.9	9.1	19.2	8600	7055	7660	6435	6240	5115	8600	7055	6120	4610	12985
<b>16"</b>																				
20 X 8 X 16	SOLIDEAL PON 555	■		■			20.1	8.0	18.9	6635	5445	5920	4970	4815	3945	6635	5445	4740	3550	10020
20 X 8 X 16	SOLIDEAL PON 550		■	■			20.1	8.0	18.9	6635	5445	5920	4970	4815	3945	6635	5445	4740	3550	10020
20 X 9 X 16	SOLIDEAL PON 555	■		■			20.0	9.0	18.9	7595	6240	6780	5690	5510	4520	7595	6240	5425	4070	11465
22 X 6 X 16	SOLIDEAL PON 550		■	■	■		22.2	6.0	20.3	5400	4410	4805	4035	3900	3195	5400	4410	3835	2865	8090
22 X 6 X 16	SOLIDEAL PON 555	■		■			22.0	6.0	20.2	5400	4410	4805	4035	3900	3195	5400	4410	3835	2865	8090
22 X 7 X 16	SOLIDEAL PON 550		■	■	■		22.0	7.0	20.3	6560	5400	5840	4915	4760	3900	6560	5400	4685	3515	9910
22 X 7 X 16	SOLIDEAL PON 555	■		■	■		21.9	7.0	20.2	6560	5400	5840	4915	4760	3900	6560	5400	4685	3515	9910
22 X 8 X 16	SOLIDEAL PON 775	■		■		■	22.1	8.0	20.2	7715	6340	6900	5785	5610	4595	7715	6340	5510	4135	11650
22 X 8 X 16	SOLIDEAL PON 550		■	■	■		22.0	8.0	20.3	7715	6340	6900	5785	5610	4595	7715	6340	5510	4135	11650
22 X 8 X 16	SOLIDEAL PON 555	■		■	■		21.9	8.0	20.2	7715	6340	6900	5785	5610	4595	7715	6340	5510	4135	11650
22 X 9 X 16	SOLIDEAL PON 775	■		■		■	22.0	9.0	20.2	8930	7330	7935	6670	6460	5290	8930	7330	6340	4785	13470
22 X 9 X 16	SOLIDEAL PON 550		■	■	■		22.0	9.0	20.3	8930	7330	7935	6670	6460	5290	8930	7330	6340	4785	13470
22 X 9 X 16	SOLIDEAL PON 555	■		■	■		22.0	9.1	20.2	8930	7330	7935	6670	6460	5290	8930	7330	6340	4785	13470

Blue sections represent hub size

# PRESS-ON TIRES

## TECHNICAL DATA

TIRE SIZE <sup>1</sup>	BRAND	TREAD PATTERN		RUBBER COMPOUND			ACTUAL TIRE DIMENSIONS			LOAD CAPACITY (lb.) <sup>2</sup>										
		Smooth	Traction	Black	Non-marking	NMAS	Overall diameter (in.)	Overall width (in.)	Replacement overall diameter <sup>5</sup> (in.)	Counterbalanced lift trucks						Other vehicles <sup>3</sup>				Static 0 mph
										Up to 6 mph		Up to 10 mph		Up to 16 mph		4 mph	6 mph	10 mph	16 mph	
										Load wheel	Steering wheel	Load wheel	Steering wheel	Load wheel	Steering wheel					
22 X 10 X 16	SOLIDEAL PON 775	■		■		■	22.0	10.0	20.2	10085	8265	8995	7550	7310	5995	10085	8265	7165	5400	15210
22 X 10 X 16	SOLIDEAL PON 550		■	■	■		22.2	10.0	20.3	10085	8265	8995	7550	7310	5995	10085	8265	7165	5400	15210
22 X 10 X 16	SOLIDEAL PON 555	■		■	■		21.9	10.0	20.2	10085	8265	8995	7550	7310	5995	10085	8265	7165	5400	15210
22 X 12 X 16	SOLIDEAL PON 775	■		■		■	22.0	12.0	20.3	12400	10195	11090	9315	9015	7385	12400	10195	8875	6660	18770
22 X 12 X 16	SOLIDEAL PON 550		■	■	■		22.0	12.0	20.3	12400	10195	11090	9315	9015	7385	12400	10195	8875	6660	18770
22 X 12 X 16	SOLIDEAL PON 555	■		■	■		21.9	12.0	20.2	12400	10195	11090	9315	9015	7385	12400	10195	8875	6660	18770
22 X 14 X 16	SOLIDEAL PON 555	■		■	■		21.9	14.0	20.2	14770	12135	13185	11080	10725	8795	14770	12135	10550	7925	22335
22 X 16 X 16	SOLIDEAL PON 555	■		■	■		22.0	16.0	20.2	17075	14020	15245	12810	12400	10165	17075	14020	12190	9160	25825
<b>17 3/4"</b>																				
22 X 6 X 17 3/4	SOLIDEAL PON 555	■		■			22.0	6.0	20.8	5170	4245	4610	3880	3750	3075	5170	4245	3695	2765	7815
22 X 7 X 17 3/4	SOLIDEAL PON 555	■		■			22.0	7.0	20.8	6240	5115	5555	4675	4520	3705	6230	5115	4440	3340	9405
22 X 8 X 17 3/4	SOLIDEAL PON 555	■		■			22.0	8.0	20.8	7220	5930	6450	5410	5245	4300	7220	5930	5160	3880	10925
<b>20"</b>																				
26 X 6 X 20	SOLIDEAL PON 555	■		■			26.1	6.0	24.3	6120	5015	5445	4575	4420	3625	6120	5015	4355	3250	9170
26 X 7 X 20	SOLIDEAL PON 555	■		■			-	-	-	7440	6120	6615	5565	5390	4420	7440	6120	5290	3980	11220
26 X 8 X 20	SOLIDEAL PON 555	■		■			26.1	7.0	24.3	8765	7220	7825	6570	6360	5215	8765	7220	6285	4685	13215
<b>22"</b>																				
28 X 10 X 22	SOLIDEAL PON 550		■	■	■		28.0	10.0	26.3	12060	9900	10760	9040	8750	7175	12060	9900	8610	6460	18210
28 X 10 X 22	SOLIDEAL PON 555	■		■	■		27.9	10.0	26.2	12060	9900	10760	9040	8750	7175	12060	9900	8610	6460	18210
28 X 12 X 22	SOLIDEAL PON 775	■		■		■	28.0	12.0	26.2	14860	12215	13270	11155	10805	8850	14860	12215	10625	7970	22465
28 X 12 X 22	SOLIDEAL PON 550		■	■	■		28.1	12.0	26.3	14860	12215	13270	11155	10805	8850	14860	12215	10625	7970	22465
28 X 12 X 22	SOLIDEAL PON 555	■		■	■		28.0	12.0	26.2	14860	12215	13270	11155	10805	8850	14860	12215	10625	7970	22465
28 X 14 X 22	SOLIDEAL PON 555	■		■			27.8	14.0	26.3	17680	14530	15785	13270	12830	10540	17680	14530	12610	9480	26730
28 X 14 X 22	SOLIDEAL PON 552		■*	■			28.2	14.0	26.3	17680	14530	15785	13270	12830	10540	17680	14530	12610	9480	26730
28 X 16 X 22	SOLIDEAL PON 555	■		■			28.0	16.0	26.2	20435	16800	18255	15320	14835	12170	20435	16800	14595	10970	30900
33 X 14 X 22	SOLIDEAL PON 775	■		■		■	33.1	14.0	29.6	20060	16415	17460	14330	14065	11465	20845	14850	13030	10415	30290

Blue sections represent hub size

# PRESS-ON TIRES

## TECHNICAL DATA

TIRE SIZE <sup>1</sup>	BRAND	TREAD PATTERN		RUBBER COMPOUND			ACTUAL TIRE DIMENSIONS			LOAD CAPACITY (lb.) <sup>2</sup>										
		Smooth	Traction	Black	Non-marking	NMA5	Overall diameter (in.)	Overall width (in.)	Replacement overall diameter <sup>5</sup> (in.)	Counterbalanced lift trucks						Other vehicles <sup>3</sup>				Static 0 mph
										Up to 6 mph		Up to 10 mph		Up to 16 mph		4 mph	6 mph	10 mph	16 mph	
										Load wheel	Steering wheel	Load wheel	Steering wheel	Load wheel	Steering wheel					
<b>140</b>																				
250 / 130 - 140	SOLIDEAL PON 555	■		■			9.8	5.1	8.6	2350	1930	2095	1765	1710	1400	2350	1930	1675	1255	3550
<b>170</b>																				
250 / 80 - 170	SOLIDEAL PON 555	■		■			9.8	3.1	9.0	1365	1125	1225	1015	-	-	1365	1125	970	740	2060
250 / 105 - 170	SOLIDEAL PON 555	■		■			9.8	4.1	9.0	1730	1420	1545	1300	1255	1025	1730	1420	1235	925	2610
<b>203</b>																				
300 / 90 - 203	SOLIDEAL PON 555	■		■			11.8	3.5	10.7	1840	1510	1640	1380	-	-	2195	1445	1310	990	2780
<b>220</b>																				
365 / 160 - 220	SOLIDEAL PON 555	■		■			14.4	6.3	12.6	4145	3405	3705	3110	3010	2470	4145	3405	2965	2225	6260
<b>240</b>																				
300 / 75 - 240	SOLIDEAL PON 555	■		■			11.9	3.0	11.2	1380	1135	1235	1035	-	-	1380	1135	980	750	2085
<b>270</b>																				
360 / 60 - 270	SOLIDEAL PON 555	■		■			14.3	2.4	13.2	1235	1015	1100	915	-	-	1465	960	880	660	1865
360 / 85 - 270	SOLIDEAL PON 555	■		■			14.3	3.3	13.2	1940	1585	1730	1445	-	-	2305	1520	1380	1045	2920
<b>280</b>																				
350 / 90 - 280	SOLIDEAL PON 555	■		■			13.8	3.5	13.0	1995	1630	1775	1490	-	-	2360	1555	1420	1070	3000
<b>305</b>																				
415 / 75 - 305	SOLIDEAL PON 555	■		■			16.4	3.0	15.1	1820	1490	1610	1345	-	-	2150	1420	1290	980	2735
415 / 90 - 305	SOLIDEAL PON 555	■		■			16.4	3.5	15.1	2360	1930	2095	1755	-	-	2790	1840	1675	1270	3550
415 / 100 - 305	SOLIDEAL PON 555	■		■			16.4	3.9	15.1	2460	2015	2205	1840	1785	1465	2460	2015	1755	1310	3715
<b>370</b>																				
520 / 120 - 370	SOLIDEAL PON 555	■		■			20.5	4.7	18.7	3695	3030	3295	2765	2680	2195	3695	3030	2635	1975	5555
550 / 150 - 370	SOLIDEAL PON 555	■		■			21.8	5.9	19.5	5190	4255	4620	3880	3760	3075	5170	4255	3695	2780	7815
<b>410</b>																				
550 / 120 - 410	SOLIDEAL PON 555	■		■			21.7	4.7	20.0	3860	3175	3450	2900	2800	2295	3860	3175	2755	2070	5830
645 / 300 - 410	SOLIDEAL PON 555	■		■			-	-	-	13360	10935	11630	9545	9195	7630	13880	9890	8675	6945	20185

Blue sections represent hub size

# PRESS-ON TIRES

## TECHNICAL DATA

TIRE SIZE <sup>1</sup>	BRAND	TREAD PATTERN		RUBBER COMPOUND			ACTUAL TIRE DIMENSIONS			LOAD CAPACITY (lb.) <sup>2</sup>										
		Smooth	Traction	Black	Non-marking	NMA5	Overall diameter (in.)	Overall width (in.)	Replacement overall diameter <sup>5</sup> (in.)	Counterbalanced lift trucks						Other vehicles <sup>3</sup>				Static 0 mph
										Up to 6 mph		Up to 10 mph		Up to 16 mph		4 mph	6 mph	10 mph	16 mph	
										Load wheel	Steering wheel	Load wheel	Steering wheel	Load wheel	Steering wheel					
<b>480</b>																				
660 / 250 - 480	SOLIDEAL PON 555	■		■			25.8	9.8	23.9	10540	8620	9170	7530	7255	6030	10945	7805	6845	5480	15915
660 / 280 - 480	SOLIDEAL PON 555	■		■			26.0	11.0	23.8	12050	9875	10505	8630	8465	6900	12545	8940	7835	6270	18230
<b>559</b>																				
840 / 350 - 559	SOLIDEAL PON 555	■		■	■		33.3	13.8	29.8	20030	16415	17460	14330	14065	11465	20845	14850	13030	10415	30290

Blue sections represent hub size

**Remarks**

- (1) Tolerances on wheel diameter  
 Code designated sizes (inch sizes): nominal rim diameter +0.005"/-0"  
 Metric sizes (mm sizes): h11 according to ISO/R286  
 Surface roughness: Ra < 6.3 μm  
 Chamfer: 5 mm wide @ 30°
- (2) The speeds quoted in the table are the maximum speeds of the unloaded vehicle. An increase in load capacity for lower speeds is not permitted.
- (3) This category includes:
  - Drive and steer wheels on other than counterbalanced forklift trucks;
  - Wheels and mobile cranes;
  - Free-rolling wheels on trailers, up to a maximum distance of 2000 m per journey.
 For longer distances and for wheels fitted to rotary plants, please consult the technical department.
- (4) For Roll On/Roll Off trailers values of category "other vehicles" at appropriate speed should be taken.
- (5) The tire is considered worn out when the outside diameter is equal or smaller than the replacement overall diameter.

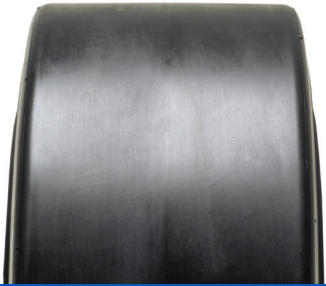
All specifications for non-marking tires are the same as the equivalent standard black tire.

**This document contains technical data of all products globally. It is possible that certain items are not sold in your region.**

**Please contact your local sales representative to check tire availability in your region.**



# PRESS-ON TIRES (PON)



SOLIDEAL  
PON 775



SOLIDEAL  
PON 555



SOLIDEAL  
PON 550



SOLIDEAL  
PON 552 MAGNUM SEMI



SOLIDEAL  
PON 775 NMAS



SOLIDEAL  
MAGNUM SM NM



SOLIDEAL  
MAGNUM TR NM

1909\_MH\_DataSheet\_PON\_Letter\_IMP\_EN\_V14