

WE START

WHERE

THE ROAD

ENDS

DATASHEET | MATERIAL HANDLING
PRESS-ON TIRES

WE START



WHERE

THE ROAD

ENDS

METRIC DATA

PRESS-ON TIRES

TECHNICAL DATA

TIRE SIZE ¹	BRAND	TREAD PATTERN		RUBBER COMPOUND			ACTUAL TIRE DIMENSIONS			LOAD CAPACITY (kg) ²											
		Traction	Smooth	Black	Non-marking	NMAS	Overall diameter (mm)	Overall width (mm)	Replacement overall diameter ⁵ (mm)	Counterbalanced lift trucks						Other vehicles ³				Static 0 km/h	
										Up to 10 km/h		Up to 16 km/h		Up to 25 km/h		6 km/h	10 km/h	16 km/h	25 km/h		
										Load wheel	Steering wheel	Load wheel	Steering wheel	Load wheel	Steering wheel						
5"																					
9 X 5 X 5	SOLIDEAL PON 555	■		■			229	127	200	960	790	855	715	695	570	960	790	680	515	1450	
6 1/4"																					
10 X 4 X 6 1/4	SOLIDEAL PON 555	■		■			252	102	225	780	640	700	590	565	465	780	640	560	420	1185	
10 X 5 X 6 1/4	SOLIDEAL PON 555	■		■			254	127	227	1030	840	915	770	745	610	1030	840	730	550	1550	
6 1/2"																					
10 X 4 X 6 1/2	SOLIDEAL PON 775	■		■		■	254	102	229	780	640	695	585	565	465	780	640	555	415	1175	
10 X 4 X 6 1/2	SOLIDEAL PON 555	■		■	■		252	102	227	780	640	695	585	565	465	780	640	555	415	1175	
10 X 4 3/4 X 6 1/2	SOLIDEAL PON 555	■		■			254	121	229	950	780	845	710	690	565	950	780	675	510	1430	
10 X 4 15/16 X 6 1/2	SOLIDEAL PON 555	■		■			256	125	230	1020	835	905	760	735	605	1015	835	725	545	1530	
10 X 5 X 6 1/2	SOLIDEAL PON 775	■		■		■	254	127	229	1010	830	905	760	735	605	1010	830	725	545	1530	
10 X 5 X 6 1/2	SOLIDEAL PON 550		■	■	■		252	127	227	1010	830	905	760	735	605	1010	830	725	545	1530	
10 X 5 X 6 1/2	SOLIDEAL PON 555	■		■	■		252	127	227	1010	830	905	760	735	605	1010	830	725	545	1530	
10 1/2 X 5 X 6 1/2	SOLIDEAL PON 775	■		■		■	267	127	237	1070	880	960	810	780	640	1070	880	770	575	1625	
10 1/2 X 5 X 6 1/2	SOLIDEAL PON 555	■		■	■		267	127	237	1070	880	960	810	780	640	1070	880	770	575	1625	
10 1/2 X 6 X 6 1/2	SOLIDEAL PON 555	■		■			267	152	237	1340	1100	1190	1000	970	795	1340	1100	950	715	2015	
8"																					
12 X 4 1/2 X 8	SOLIDEAL PON 775	■		■		■	305	114	275	1040	855	930	780	755	620	1040	855	745	560	1575	
12 X 4 1/2 X 8	SOLIDEAL PON 555	■		■	■		305	114	275	1040	855	930	780	755	620	1040	855	745	560	1575	
12 X 5 X 8	SOLIDEAL PON 555	■		■			305	127	275	1190	980	1065	890	865	710	1190	980	850	635	1795	
12 X 5 1/2 X 8	SOLIDEAL PON 555	■		■	■		305	140	275	1340	1100	1195	1005	970	795	1340	1100	955	715	2020	
13 X 4 1/2 X 8	SOLIDEAL PON 555	■		■			330	114	292	1120	920	1000	840	815	670	1120	920	800	600	1685	
13 1/2 X 4 1/2 X 8	SOLIDEAL PON 555	■		■			343	114	301	1150	940	1025	860	835	685	1150	940	820	615	1730	
13 1/2 X 5 1/2 X 8	SOLIDEAL PON 775	■		■		■	344	140	301	1510	1240	1345	1130	1095	895	1510	1240	1080	810	2280	
13 1/2 X 5 1/2 X 8	SOLIDEAL PON 550		■	■	■		343	140	301	1510	1240	1345	1130	1095	895	1510	1240	1080	810	2280	
13 1/2 X 5 1/2 X 8	SOLIDEAL PON 555	■		■	■		343	140	301	1510	1240	1345	1130	1095	895	1510	1240	1080	810	2280	

Blue sections represent hub size

PRESS-ON TIRES

TECHNICAL DATA

TIRE SIZE ¹	BRAND	TREAD PATTERN		RUBBER COMPOUND			ACTUAL TIRE DIMENSIONS			LOAD CAPACITY (kg) ²											
		Traction	Smooth	Black	Non-marking	NMAS	Overall diameter (mm)	Overall width (mm)	Replacement overall diameter ⁵ (mm)	Counterbalanced lift trucks						Other vehicles ³				Static 0 km/h	
										Up to 10 km/h		Up to 16 km/h		Up to 25 km/h		6 km/h	10 km/h	16 km/h	25 km/h		
										Load wheel	Steering wheel	Load wheel	Steering wheel	Load wheel	Steering wheel						
14 X 4 1/2 X 8	SOLIDEAL PON 775	■		■		■	357	114	310	1170	960	1045	875	850	695	1170	960	830	625	1760	
14 X 4 1/2 X 8	SOLIDEAL PON 550		■	■	■		356	114	312	1170	960	1045	875	850	695	1170	960	830	625	1760	
14 X 4 1/2 X 8	SOLIDEAL PON 555	■		■	■		352	114	309	1170	960	1045	875	850	695	1170	960	830	625	1760	
10"																					
14 X 5 X 10	SOLIDEAL PON 775	■		■		■	357	127	327	1335	1095	1195	1000	970	795	1335	1095	955	715	2020	
14 X 5 X 10	SOLIDEAL PON 550		■	■	■		356	127	328	1335	1095	1195	1000	970	795	1335	1095	955	715	2020	
14 X 5 X 10	SOLIDEAL PON 555	■		■	■		354	127	328	1335	1095	1195	1000	970	795	1335	1095	955	715	2020	
15 1/2 X 5 X 10	SOLIDEAL PON 550		■	■			396	127	353	1470	1210	1315	1100	1070	875	1470	1210	1050	790	2225	
15 1/2 X 6 X 10	SOLIDEAL PON 555	■		■			396	127	353	1870	1530	1665	1400	1355	1110	1870	1530	1330	940	2830	
10 1/2"																					
16 X 5 X 10 1/2	SOLIDEAL PON 775	■		■		■	407	127	365	1510	1240	1345	1130	1095	895	1510	1240	1080	805	2275	
16 X 5 X 10 1/2	SOLIDEAL PON 550		■	■	■		406	127	367	1510	1240	1345	1130	1095	895	1510	1240	1080	805	2275	
16 X 5 X 10 1/2	SOLIDEAL PON 555	■		■	■		403	127	362	1510	1240	1345	1130	1095	895	1510	1240	1080	805	2275	
16 X 6 X 10 1/2	SOLIDEAL PON 775	■		■		■	407	152	365	1910	1570	1710	1435	1390	1140	1910	1570	1360	1020	2875	
16 X 6 X 10 1/2	SOLIDEAL PON 550		■	■	■		406	152	367	1910	1570	1710	1435	1390	1140	1910	1570	1360	1020	2875	
16 X 6 X 10 1/2	SOLIDEAL PON 555	■		■	■		403	152	362	1910	1570	1710	1435	1390	1140	1910	1570	1360	1020	2875	
16 X 7 X 10 1/2	SOLIDEAL PON 775	■		■		■	407	178	365	2325	1910	2070	1740	1685	1380	2325	1910	1660	1245	3500	
16 X 7 X 10 1/2	SOLIDEAL PON 550		■	■	■		411	178	368	2325	1910	2070	1740	1685	1380	2325	1910	1660	1245	3500	
16 X 7 X 10 1/2	SOLIDEAL PON 555	■		■	■		406	178	365	2325	1910	2070	1740	1685	1380	2325	1910	1660	1245	3500	
16 X 7 X 10 1/2	SOLIDEAL PON 552		■*	■			-	-	-	2325	1910	2070	1740	1685	1380	2325	1910	1660	1245	3500	
11 1/4"																					
15 X 4 X 11 1/4	SOLIDEAL PON 555	■		■	■		382	102	354	1065	875	950	800	775	635	1065	875	760	570	1605	
15 X 5 X 11 1/4	SOLIDEAL PON 775	■		■		■	383	127	356	1390	1140	1240	1040	1010	830	1390	1140	990	745	2100	
15 X 5 X 11 1/4	SOLIDEAL PON 550		■	■	■		380	128	355	1390	1140	1240	1040	1010	830	1390	1140	990	745	2100	
15 X 5 X 11 1/4	SOLIDEAL PON 555	■		■	■		379	127	354	1390	1140	1240	1040	1010	830	1390	1140	990	745	2100	
15 X 6 X 11 1/4	SOLIDEAL PON 555	■		■			381	152	354	1715	1410	1530	1285	1245	1020	1715	1410	1225	920	2595	

Blue sections represent hub size

PRESS-ON TIRES

TECHNICAL DATA

TIRE SIZE ¹	BRAND	TREAD PATTERN		RUBBER COMPOUND			ACTUAL TIRE DIMENSIONS			LOAD CAPACITY (kg) ²										
		Traction	Smooth	Black	Non-marking	NMAS	Overall diameter (mm)	Overall width (mm)	Replacement overall diameter ⁵ (mm)	Counterbalanced lift trucks						Other vehicles ³				Static 0 km/h
										Up to 10 km/h		Up to 16 km/h		Up to 25 km/h		6 km/h	10 km/h	16 km/h	25 km/h	
										Load wheel	Steering wheel	Load wheel	Steering wheel	Load wheel	Steering wheel					
16 1/4 X 5 X 11 1/4	SOLIDEAL PON 775	■		■		■	413	127	376	1530	1250	1360	1145	1105	905	1530	1250	1090	815	2300
16 1/4 X 5 X 11 1/4	SOLIDEAL PON 550		■	■	■		414	128	376	1530	1250	1360	1145	1105	905	1530	1250	1090	815	2300
16 1/4 X 5 X 11 1/4	SOLIDEAL PON 555	■		■	■		410	127	374	1530	1250	1360	1145	1105	905	1530	1250	1090	815	2300
16 1/4 X 6 X 11 1/4	SOLIDEAL PON 775	■		■		■	413	152	375	1920	1580	1715	1440	1395	1140	1920	1580	1370	1025	2890
16 1/4 X 6 X 11 1/4	SOLIDEAL PON 550		■	■	■		412	152	373	1920	1580	1715	1440	1395	1140	1920	1580	1370	1025	2890
16 1/4 X 6 X 11 1/4	SOLIDEAL PON 555	■		■	■		410	152	373	1920	1580	1715	1440	1395	1140	1920	1580	1370	1025	2890
16 1/4 X 7 X 11 1/4	SOLIDEAL PON 775	■		■		■	413	178	375	2325	1900	2060	1735	1680	1380	2325	1900	1650	1245	3500
16 1/4 X 7 X 11 1/4	SOLIDEAL PON 550		■	■	■		415	178	376	2325	1900	2060	1735	1680	1380	2325	1900	1650	1245	3500
16 1/4 X 7 X 11 1/4	SOLIDEAL PON 555	■		■	■		413	178	375	2325	1900	2060	1735	1680	1380	2325	1900	1650	1245	3500
16 1/4 X 8 X 11 1/4	SOLIDEAL PON 555	■		■			413	203	375	2715	2225	2420	2030	1965	1615	2710	2225	1935	1450	4090
12 1/8"																				
17 X 5 X 12 1/8	SOLIDEAL PON 555	■		■			432	127	395	1570	1290	1400	1180	1145	935	1570	1290	1120	845	2380
17 X 6 X 12 1/8	SOLIDEAL PON 550		■	■			432	127	395	1980	1630	1770	1485	1435	1180	1980	1630	1410	1065	3000
18 X 5 X 12 1/8	SOLIDEAL PON 550		■	■	■		462	127	415	1640	1350	1470	1230	1195	980	1640	1350	1170	880	2480
18 X 5 X 12 1/8	SOLIDEAL PON 555	■		■	■		457	127	412	1640	1350	1470	1230	1195	980	1640	1350	1170	880	2480
18 X 6 X 12 1/8	SOLIDEAL PON 775	■		■		■	457	152	412	2100	1720	1870	1575	1525	1250	2100	1720	1500	1120	3155
18 X 6 X 12 1/8	SOLIDEAL PON 550		■	■	■		457	152	415	2100	1720	1870	1575	1525	1250	2100	1720	1500	1120	3155
18 X 6 X 12 1/8	SOLIDEAL PON 555	■		■	■		453	152	412	2100	1720	1870	1575	1525	1250	2100	1720	1500	1120	3155
18 X 7 X 12 1/8	SOLIDEAL PON 775	■		■		■	459	178	414	2550	2100	2280	1910	1855	1520	2550	2100	1820	1370	3855
18 X 7 X 12 1/8	SOLIDEAL PON 550		■	■	■		457	178	415	2550	2100	2280	1910	1855	1520	2550	2100	1820	1370	3855
18 X 7 X 12 1/8	SOLIDEAL PON 555	■		■	■		457	178	412	2550	2100	2280	1910	1855	1520	2550	2100	1820	1370	3855
18 X 8 X 12 1/8	SOLIDEAL PON 775	■		■		■	458	203	412	3000	2475	2680	2250	2180	1790	3000	2475	2150	1605	4530
18 X 8 X 12 1/8	SOLIDEAL PON 550		■	■	■		457	203	415	3000	2475	2680	2250	2180	1790	3000	2475	2150	1605	4530
18 X 8 X 12 1/8	SOLIDEAL PON 555	■		■	■		453	203	412	3000	2475	2680	2250	2180	1790	3000	2475	2150	1605	4530
18 X 9 X 12 1/8	SOLIDEAL PON 550		■	■	■		457	229	412	3450	2850	3090	2600	2510	2060	3450	2850	2475	1855	5230
18 X 9 X 12 1/8	SOLIDEAL PON 555	■		■	■		453	229	409	3450	2850	3090	2600	2510	2060	3450	2850	2475	1855	5230

Blue sections represent hub size

PRESS-ON TIRES

TECHNICAL DATA

TIRE SIZE ¹	BRAND	TREAD PATTERN		RUBBER COMPOUND			ACTUAL TIRE DIMENSIONS			LOAD CAPACITY (kg) ²										
		Traction	Smooth	Black	Non-marking	NMAS	Overall diameter (mm)	Overall width (mm)	Replacement overall diameter ⁵ (mm)	Counterbalanced lift trucks						Other vehicles ³				Static 0 km/h
										Up to 10 km/h		Up to 16 km/h		Up to 25 km/h		6 km/h	10 km/h	16 km/h	25 km/h	
										Load wheel	Steering wheel	Load wheel	Steering wheel	Load wheel	Steering wheel					
15"																				
21 X 6 X 15	SOLIDEAL PON 550		■	■			538	152	490	2350	1930	2100	1765	1710	1400	2350	1930	1680	1255	3540
21 X 7 X 15	SOLIDEAL PON 775	■		■		■	535	179	488	2875	2350	2560	2150	2085	1710	2875	2350	2050	1540	4335
21 X 7 X 15	SOLIDEAL PON 550		■	■	■		533	178	487	2875	2350	2560	2150	2085	1710	2875	2350	2050	1540	4335
21 X 7 X 15	SOLIDEAL PON 555	■		■	■		529	178	490	2875	2350	2560	2150	2085	1710	2875	2350	2050	1540	4335
21 X 8 X 15	SOLIDEAL PON 775	■		■		■	534	204	487	3375	2775	3025	2540	2455	2015	3375	2775	2425	1810	5100
21 X 8 X 15	SOLIDEAL PON 550		■	■	■		533	203	487	3375	2775	3025	2540	2455	2015	3375	2775	2425	1810	5100
21 X 8 X 15	SOLIDEAL PON 555	■		■	■		529	203	487	3375	2775	3025	2540	2455	2015	3375	2775	2425	1810	5100
21 X 9 X 15	SOLIDEAL PON 775	■		■		■	533	229	487	3900	3200	3475	2920	2830	2320	3900	3200	2775	2090	5890
21 X 9 X 15	SOLIDEAL PON 550		■	■	■		534	229	490	3900	3200	3475	2920	2830	2320	3900	3200	2775	2090	5890
21 X 9 X 15	SOLIDEAL PON 555	■		■	■		531	230	487	3900	3200	3475	2920	2830	2320	3900	3200	2775	2090	5890
16"																				
20 X 8 X 16	SOLIDEAL PON 555	■		■			510	203	480	3010	2470	2685	2255	2185	1790	3010	2470	2150	1610	4545
20 X 8 X 16	SOLIDEAL PON 550		■	■			510	203	480	3010	2470	2685	2255	2185	1790	3010	2470	2150	1610	4545
20 X 9 X 16	SOLIDEAL PON 555	■		■			508	229	480	3445	2830	3075	2580	2500	2050	3445	2830	2460	1845	5200
22 X 6 X 16	SOLIDEAL PON 550		■	■	■		563	152	515	2450	2000	2180	1830	1770	1450	2450	2000	1740	1300	3670
22 X 6 X 16	SOLIDEAL PON 555	■		■			559	152	512	2450	2000	2180	1830	1770	1450	2450	2000	1740	1300	3670
22 X 7 X 16	SOLIDEAL PON 550		■	■	■		560	178	516	2975	2450	2650	2230	2160	1770	2975	2450	2125	1595	4495
22 X 7 X 16	SOLIDEAL PON 555	■		■	■		556	179	514	2975	2450	2650	2230	2160	1770	2975	2450	2125	1595	4495
22 X 8 X 16	SOLIDEAL PON 775	■		■		■	561	203	514	3500	2875	3130	2625	2545	2085	3500	2875	2500	1875	5285
22 X 8 X 16	SOLIDEAL PON 550		■	■	■		559	203	516	3500	2875	3130	2625	2545	2085	3500	2875	2500	1875	5285
22 X 8 X 16	SOLIDEAL PON 555	■		■	■		556	203	514	3500	2875	3130	2625	2545	2085	3500	2875	2500	1875	5285
22 X 9 X 16	SOLIDEAL PON 775	■		■		■	559	229	514	4050	3325	3600	3025	2930	2400	4050	3325	2875	2170	6110
22 X 9 X 16	SOLIDEAL PON 550		■	■	■		558	229	516	4050	3325	3600	3025	2930	2400	4050	3325	2875	2170	6110
22 X 9 X 16	SOLIDEAL PON 555	■		■	■		559	230	514	4050	3325	3600	3025	2930	2400	4050	3325	2875	2170	6110

Blue sections represent hub size

PRESS-ON TIRES

TECHNICAL DATA

TIRE SIZE ¹	BRAND	TREAD PATTERN		RUBBER COMPOUND			ACTUAL TIRE DIMENSIONS			LOAD CAPACITY (kg) ²										
		Traction	Smooth	Black	Non-marking	NMAS	Overall diameter (mm)	Overall width (mm)	Replacement overall diameter ⁵ (mm)	Counterbalanced lift trucks						Other vehicles ³				Static 0 km/h
										Up to 10 km/h		Up to 16 km/h		Up to 25 km/h		6 km/h	10 km/h	16 km/h	25 km/h	
										Load wheel	Steering wheel	Load wheel	Steering wheel	Load wheel	Steering wheel					
22 X 10 X 16	SOLIDEAL PON 775	■		■		■	559	254	514	4575	3750	4080	3425	3315	2720	4575	3750	3250	2450	6900
22 X 10 X 16	SOLIDEAL PON 550		■	■	■		563	254	516	4575	3750	4080	3425	3315	2720	4575	3750	3250	2450	6900
22 X 10 X 16	SOLIDEAL PON 555	■		■	■		556	254	514	4575	3750	4080	3425	3315	2720	4575	3750	3250	2450	6900
22 X 12 X 16	SOLIDEAL PON 775	■		■		■	560	305	515	5625	4625	5030	4225	4090	3350	5625	4625	4025	3020	8515
22 X 12 X 16	SOLIDEAL PON 550		■	■	■		559	304	516	5625	4625	5030	4225	4090	3350	5625	4625	4025	3020	8515
22 X 12 X 16	SOLIDEAL PON 555	■		■	■		555	305	514	5625	4625	5030	4225	4090	3350	5625	4625	4025	3020	8515
22 X 14 X 16	SOLIDEAL PON 555	■		■	■		556	356	514	6700	5505	5980	5025	4865	3990	6700	5505	4785	3595	10130
22 X 16 X 16	SOLIDEAL PON 555	■		■	■		559	406	514	7745	6360	6915	5810	5625	4610	7745	6360	5530	4155	11715
17 3/4"																				
22 X 6 X 17 3/4	SOLIDEAL PON 555	■		■			559	152	529	2345	1925	2090	1760	1700	1395	2345	1925	1675	1255	3545
22 X 7 X 17 3/4	SOLIDEAL PON 555	■		■			559	178	529	2830	2320	2520	2120	2050	1680	2825	2320	2015	1515	4265
22 X 8 X 17 3/4	SOLIDEAL PON 555	■		■			559	203	529	3275	2690	2925	2455	2380	1950	3275	2690	2340	1760	4955
20"																				
26 X 6 X 20	SOLIDEAL PON 555	■		■			663	152	617	2775	2275	2470	2075	2005	1645	2775	2275	1975	1475	4160
26 X 7 X 20	SOLIDEAL PON 555	■		■			-	-	-	3375	2775	3000	2525	2445	2005	3375	2775	2400	1805	5090
26 X 8 X 20	SOLIDEAL PON 555	■		■			663	178	617	3975	3275	3550	2980	2885	2365	3975	3275	2850	2125	5995
22"																				
28 X 10 X 22	SOLIDEAL PON 550		■	■	■		712	254	669	5470	4490	4880	4100	3970	3255	5470	4490	3905	2930	8260
28 X 10 X 22	SOLIDEAL PON 555	■		■	■		709	254	666	5470	4490	4880	4100	3970	3255	5470	4490	3905	2930	8260
28 X 12 X 22	SOLIDEAL PON 775	■		■		■	711	305	666	6740	5540	6020	5060	4900	4015	6740	5540	4820	3615	10190
28 X 12 X 22	SOLIDEAL PON 550		■	■	■		713	305	669	6740	5540	6020	5060	4900	4015	6740	5540	4820	3615	10190
28 X 12 X 22	SOLIDEAL PON 555	■		■	■		711	305	666	6740	5540	6020	5060	4900	4015	6740	5540	4820	3615	10190
28 X 14 X 22	SOLIDEAL PON 555	■		■			707	356	669	8020	6590	7160	6020	5820	4780	8020	6590	5720	4300	12125
28 X 14 X 22	SOLIDEAL PON 552		■*	■			716	356	669	8020	6590	7160	6020	5820	4780	8020	6590	5720	4300	12125
28 X 16 X 22	SOLIDEAL PON 555	■		■			711	406	666	9270	7620	8280	6950	6730	5520	9270	7620	6620	4975	14015
33 X 14 X 22	SOLIDEAL PON 775	■		■		■	841	356	752	9100	7445	7920	6500	6380	5200	9455	6735	5910	4725	13740

Blue sections represent hub size

PRESS-ON TIRES

TECHNICAL DATA

TIRE SIZE ¹	BRAND	TREAD PATTERN		RUBBER COMPOUND			ACTUAL TIRE DIMENSIONS			LOAD CAPACITY (kg) ²										
		Traction	Smooth	Black	Non-marking	NMAS	Overall diameter (mm)	Overall width (mm)	Replacement overall diameter ⁵ (mm)	Counterbalanced lift trucks						Other vehicles ³				Static 0 km/h
										Up to 10 km/h		Up to 16 km/h		Up to 25 km/h		6 km/h	10 km/h	16 km/h	25 km/h	
										Load wheel	Steering wheel	Load wheel	Steering wheel	Load wheel	Steering wheel					
140																				
250 / 130 - 140	SOLIDEAL PON 555	■		■			250	130	218	1065	875	950	800	775	635	1065	875	760	570	1610
170																				
250 / 80 - 170	SOLIDEAL PON 555	■		■			250	80	228	620	510	555	460	-	-	620	510	440	335	935
250 / 105 - 170	SOLIDEAL PON 555	■		■			250	105	228	785	645	700	590	570	465	785	645	560	420	1185
203																				
300 / 90 - 203	SOLIDEAL PON 555	■		■			300	90	272	835	685	745	625	-	-	995	655	595	450	1260
220																				
365 / 160 - 220	SOLIDEAL PON 555	■		■			365	160	321	1880	1545	1680	1410	1365	1120	1880	1545	1345	1010	2840
240																				
300 / 75 - 240	SOLIDEAL PON 555	■		■			301	75	285	625	515	560	470	-	-	625	515	445	340	945
270																				
360 / 60 - 270	SOLIDEAL PON 555	■		■			362	60	336	560	460	500	415	-	-	665	435	400	300	845
360 / 85 - 270	SOLIDEAL PON 555	■		■			362	85	336	880	720	785	655	-	-	1045	690	625	475	1325
280																				
350 / 90 - 280	SOLIDEAL PON 555	■		■			350	90	331	905	740	805	675	-	-	1070	705	645	485	1360
305																				
415 / 75 - 305	SOLIDEAL PON 555	■		■			417	75	384	825	675	730	610	-	-	975	645	585	445	1240
415 / 90 - 305	SOLIDEAL PON 555	■		■			417	90	384	1070	875	950	795	-	-	1265	835	760	575	1610
415 / 100 - 305	SOLIDEAL PON 555	■		■			417	100	384	1115	915	1000	835	810	665	1115	915	795	595	1685
370																				
520 / 120 - 370	SOLIDEAL PON 555	■		■			520	120	474	1675	1375	1495	1255	1215	995	1675	1375	1195	895	2520
550 / 150 - 370	SOLIDEAL PON 555	■		■			553	150	496	2355	1930	2095	1760	1705	1395	2345	1930	1675	1260	3545
410																				
550 / 120 - 410	SOLIDEAL PON 555	■		■			550	120	509	1750	1440	1565	1315	1270	1040	1750	1440	1250	940	2645
645 / 300 - 410	SOLIDEAL PON 555	■		■			-	-	-	6060	4960	5275	4330	4170	3460	6295	4485	3935	3150	9155

Blue sections represent hub size

PRESS-ON TIRES

TECHNICAL DATA

TIRE SIZE ¹	BRAND	TREAD PATTERN		RUBBER COMPOUND			ACTUAL TIRE DIMENSIONS			LOAD CAPACITY (kg) ²											
		Traction	Smooth	Black	Non-marking	NMAS	Overall diameter (mm)	Overall width (mm)	Replacement overall diameter ⁵ (mm)	Counterbalanced lift trucks						Other vehicles ³				Static 0 km/h	
										Up to 10 km/h		Up to 16 km/h		Up to 25 km/h		6 km/h	10 km/h	16 km/h	25 km/h		
		Load wheel	Steering wheel	Load wheel	Steering wheel	Load wheel	Steering wheel														
480																					
660 / 250 - 480	SOLIDEAL PON 555	■		■			655	250	606	4780	3910	4160	3415	3290	2735	4965	3540	3105	2485	7220	
660 / 280 - 480	SOLIDEAL PON 555	■		■			660	280	606	5465	4480	4765	3915	3840	3130	5690	4055	3555	2845	8270	
559																					
840 / 350 - 559	SOLIDEAL PON 555	■		■	■		845	350	757	9085	7445	7920	6500	6380	5200	9455	6735	5910	4725	13740	

Blue sections represent hub size

Remarks

(1) Tolerances on wheel diameter

Code designated sizes (inch sizes): nominal rim diameter +0.005"/-0"

Metric sizes (mm sizes): h11 according to ISO/R286

Surface roughness: Ra < 6.3 µm

Chamfer: 5 mm wide @ 30°

(2) The speeds quoted in the table are the maximum speeds of the unloaded vehicle. An increase in load capacity for lower speeds is not permitted.

(3) This category includes:

- Drive and steer wheels on other than counterbalanced forklift trucks;

- Wheels and mobile cranes;

- Free-rolling wheels on trailers, up to a maximum distance of 2000 m per journey.

For longer distances and for wheels fitted to rotary plants, please consult the technical department.

(4) For Roll On/Roll Off trailers values of category "other vehicles" at appropriate speed should be taken.

(5) The tire is considered worn out when the outside diameter is equal or smaller than the replacement overall diameter.

All specifications for non-marking tires are the same as the equivalent standard black tire.

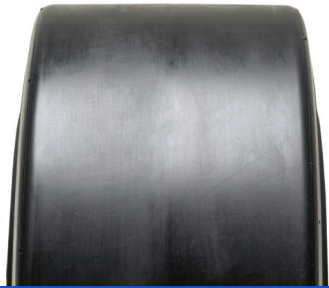
This document contains technical data of all products globally. It is possible that certain items are not sold in your region.

Please contact your local sales representative to check tire availability in your region.

EXCEPTIONS:

■ * MAG SEMI PATTERN

PRESS-ON TIRES (PON)



SOLIDEAL
PON 775



SOLIDEAL
PON 555



SOLIDEAL
PON 550



SOLIDEAL
PON 552 MAGNUM SEMI



SOLIDEAL
PON 775 NMAS



SOLIDEAL
MAGNUM SM NM



SOLIDEAL
MAGNUM TR NM