

CAMSO SKS 332

FORMERLY SOLIDEAL GRIPPER



SKID STEER
LOADERS



RELIABLE PERFORMANCE AND QUALITY

A reliable tire solution that's made to resist chunking and tearing. With good durability and traction, it's an ideal choice for light-duty, off-road skid steer loader application.

camso.co

PERFORMANCE

TIRE LIFE



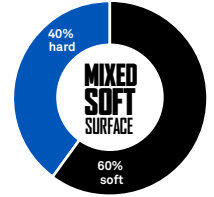
PUNCTURE RESISTANCE



TRACTION



CAMSO SKS 332



PREMIUM RUBBER COMPOUNDS

- Provides good chunk and tear resistance

DEEP LUG DESIGN

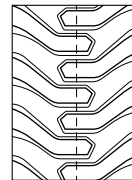
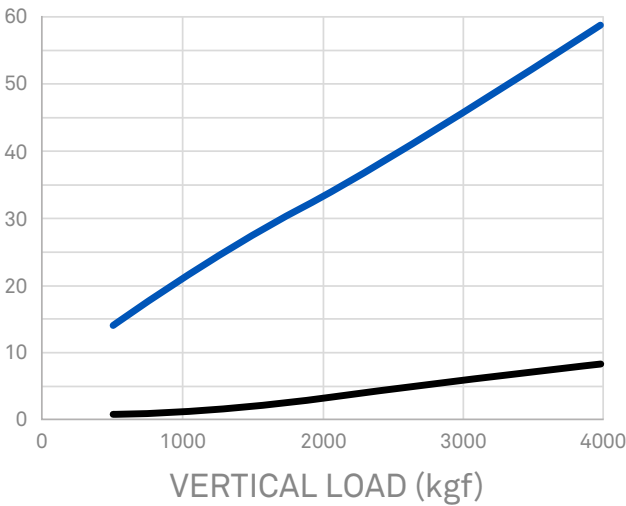
- Provides good durability and traction in light-duty conditions

LOWER LUG-TO-VOID RATIO

- Provides good traction in off-road conditions

TIRE SIZE	PR	RIM SIZE		ACTUAL TIRE DIMENSIONS			LOAD INDEX	SPEED SYMBOL	TRA CODE	INFLATION PRESSURE [bar] [PSI]	MAXIMUM TIRE LOAD [kg] [lb]		
		Recommended	Alternative	O.D. [mm] [in]	O.W. [mm] [in]	O.T.D. [mm] [32nd]					Static	8 km/h 5 mph	16 km/h 10 mph
10-16.5	8	8.25	-	764	275	15.0	129	A2	R-4	4.20	2960	1875	1480
				30.1	10.8	19				60	6550	4150	3250
12-16.5	10	9.75	-	819	318	18.0	140	A2	R-4	4.50	4020	2545	2010
				32.2	12.5	23				64	8850	5600	4450

12-16.5 10PR SKS 332



The Camso SKS 332 is a great standard-duty, off-road tire offering a good combination of quality, performance and value.

- VERTICAL DEFLECTION (mm)
- HORIZONTAL DEFLECTION (mm)

AUTHORIZED DISTRIBUTOR:

camso.co



FORMERLY CAMOPLAST SOLIDEAL