

# CAMSO AG 4500 FRICTION DRIVE

## High performance, value-driven

When it comes to general tillage and rowcrop applications, get the perfect balance between reliability, quality and price with the Camso AG 4500. Better track life than the competition, reducing your cost per hour by an average of 20%. It's the OEM-approved track.

PERFORMANCE  
DURABILITY



TRACTION



FLOTATION



## High-grade rubber compounds

### Maximizes performance and durability

- Specifically engineered compounds for treads, carcass and guide lugs

## Maximized guide lug geometry

### Provides optimal guiding surface

- Guide lug geometry designed to OEM specification
- Increased side load resistance compared to 2500

## Optimized track carcass

### Protects from punctures and debris ingestion

- Trackshield™ carcass technology allows 20% more resistant to punctures than 2500
- Eliminates downtime due to carcass tear

## Versatile tread bar

### Provides optimal traction and ride quality

- Balance between traction, cleanout and flotation

## Longest lasting carcass

### No material displacement during the manufacturing and curing process means:

- Track compound types located exactly where you need it
- Uniform tension distribution, eliminating downtime due to carcass tear



DRIVEN BY QUALITY

# PERFORMANCE AND DURABILITY FROM THE INSIDE OUT

## LONGEST LASTING CARCASS

No material displacement during the manufacturing and curing process means:

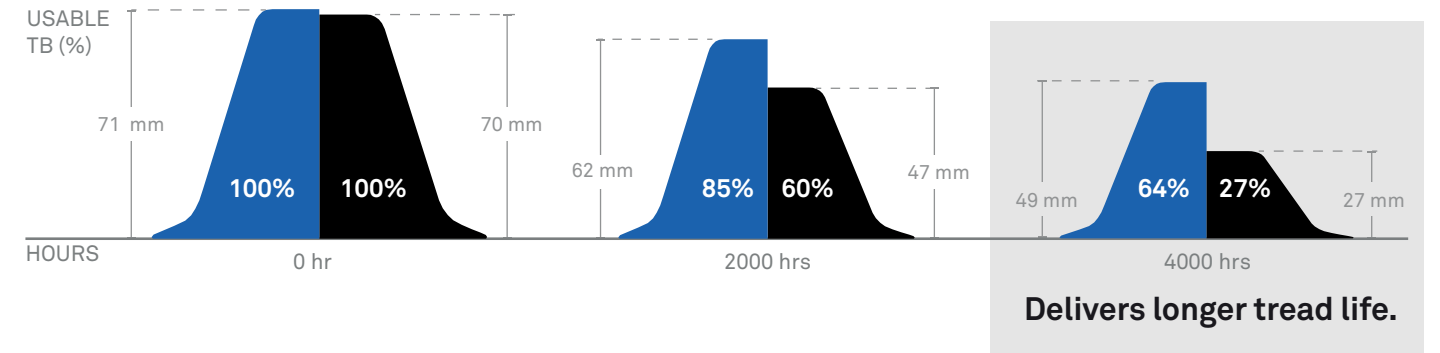
- Track compound types located exactly where you need it
- Uniform tension distribution, eliminating downtime due to carcass tear

THE RESULT: A FINISHED PRODUCT WITH INCREASED DURABILITY AND PERFORMANCE.

## CAMSO TRACKS TREAD LIFE COMPARISON

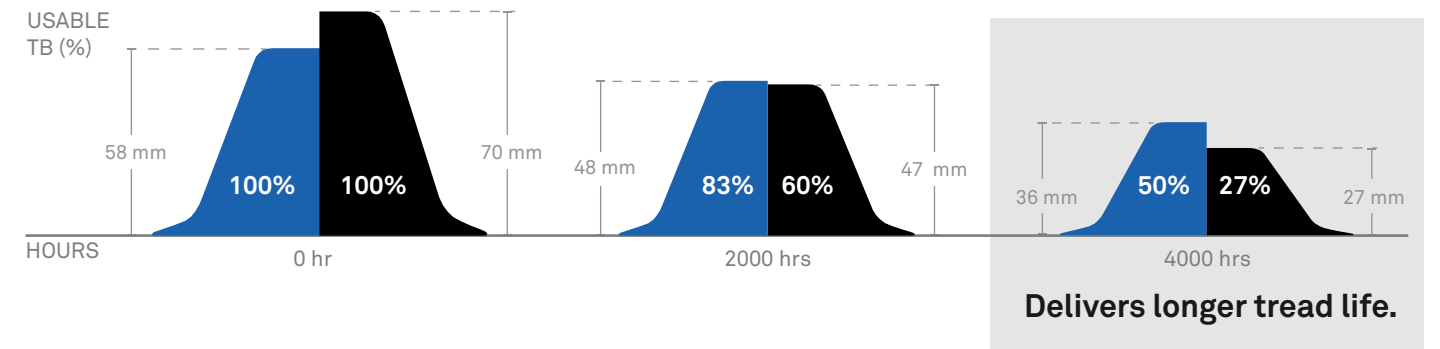
### CAMSO AG 6500

COMPARATIVE FIELD TESTING  
2.8" (71 mm) CAMSO AG 6500 TREADBAR VS 2.75" (70 mm) COMPETITION TREADBAR



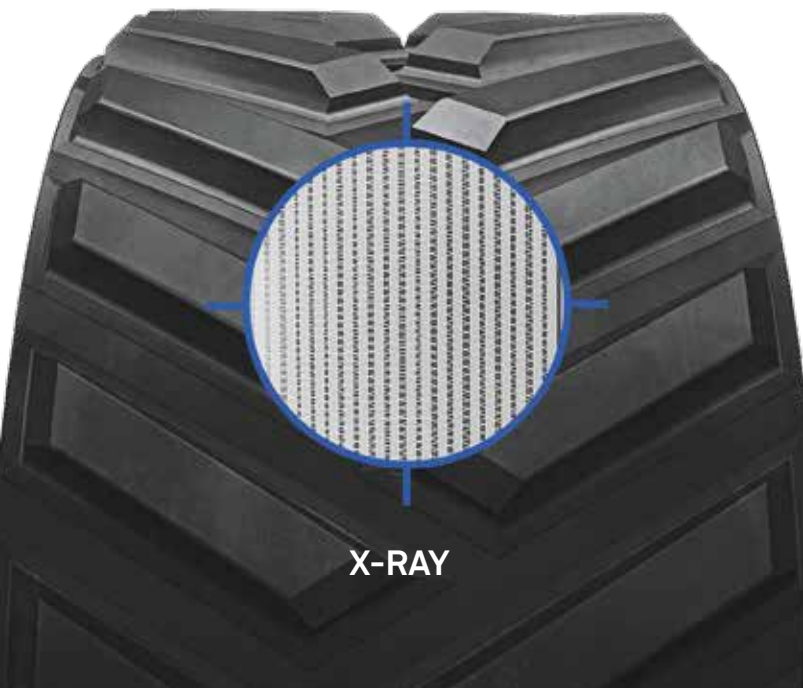
### CAMSO AG 2500

COMPARATIVE FIELD TESTING  
2.3" (58 mm) CAMSO AG 2500 TREADBAR VS 2.75" (70 mm) COMPETITION TREADBAR

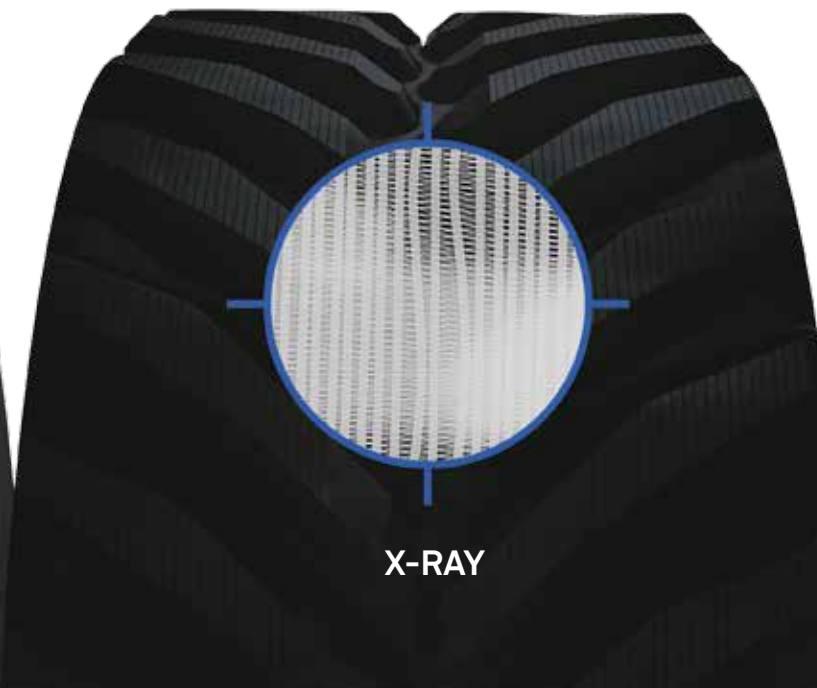


■ Camso ■ Competition

### CAMSO'S UNIQUE SINGLE CURE PROCESS



### COMPETITOR MOLDING PROCESS



CAMSO TRACKS HAVE BETTER TREAD WEAR PROPERTIES WHICH CONTRIBUTE TO LOWER THE COST PER HOUR BY AT LEAST 15%.



# FRICION DRIVE



# THE RIGHT TRACK FOR YOUR APPLICATION

	APPLICATION	ANNUAL HOUR USAGE	COMPETITIVE BENCHMARK		RESULTS (AVERAGE)
			PRICE	PERFORMANCE	
<b>CAMSO AG 6500</b> Unmatched performance, durability and reliability	SCRAPER, RIPPER, HEAVY TILLAGE AND ROWCROP	1000+			REDUCING YOUR COST PER HOUR BY <b>30%</b>
<b>CAMSO AG 4500</b> High performance, value-driven	GENERAL TILLAGE AND ROWCROP	500-1000			REDUCING YOUR COST PER HOUR BY <b>20%</b>
<b>CAMSO AG 2500</b> Competitive performance, for less	STANDARD AG APPLICATIONS	100-500			REDUCING YOUR COST PER HOUR BY <b>15%</b>

■ CAMSO    ■ COMPETITOR

WE'RE COMMITTED TO REDEFINING THE INDUSTRY STANDARD AND HAVE PRODUCTS THAT RESPOND TO THE EVOLUTION OF FARMING EQUIPMENT.