

REMANUFACTURING PROGRAM



Swap today.
Save tomorrow.



Easy trade-in.
No lost time in the field.



The future of farming
is now.

SIMILAR TO REBUILDING AN OLD ENGINE

Your track carcass and wheel
cores can be remanufactured
to OEM standards and perform
similarly to new replacement parts

– all at a lower cost than
new ones.

Contact your local dealer or Camso Customer Service now
to take part in the program.

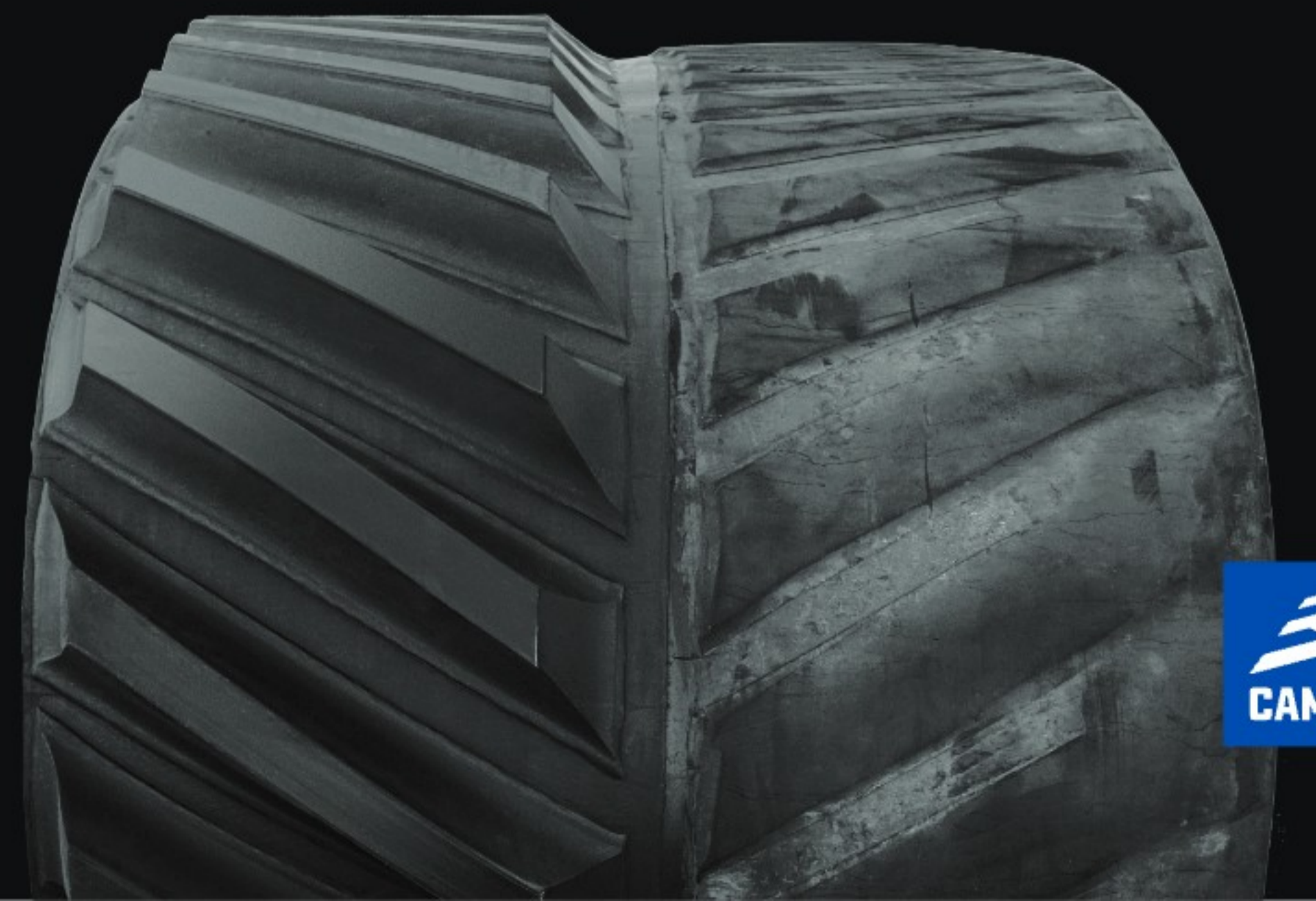
1 844 CAMSOAG | 1 317 671-7327 | ag.productsupport@micelin.com
camso.co

PRINTED IN CANADA



CERTIFIED

REMANUFACTURED TRACKS AND WHEELS





THE REMAN FRIENDLY SEAL: a new way to help customers save

The Reman Friendly seal, let consumers know which new tracks are the best bets for remanufacturing at the end of their service life. Certain tracks, such as the 4500 and 6500 series, are excellent candidates for remanufacturing.

If purchasing a new track online, pay attention to this seal.

CAMSO CERTIFIED REMANUFACTURED PRODUCTS

Provide you with an economical, effective and durable solution for general agriculture applications that will extend the use of tracks and wheels on their equipment.



CAMSO REMANUFACTURED TRACK

Giving multiple lives to a product you've always trusted.

- Remanufactured from Camso's long-lasting carcass
- Using the same Camso original materials and quality
- Available for all friction drive tractors, 16", 18", 25", 27.5" 30" and 36" in track width



CAMSO REMANUFACTURED WHEELS

The broadest range of remanufactured PU midroller wheels for all track tractors.

- Remanufactured with the same Camso original materials
- Providing extended life and lowering operational cost
- Available for all tractors

Long lasting carcass

Durable, consistent and predictable performance due to Camso's unique manufacturing and curing process

Long lasting tread bar

Wear-resistant tread compound combined with a design geared towards your application

High-grade rubber compounds

Maximizes performance and durability

Strengthened guide lugs

Enhanced guide lug geometry reduces risk of torn guide lugs

