



AGRICULTURAL TRACKS AND WHEELS LINEUP FOR CASE IH



We are dedicated to supporting farmers in every step of their operations. For customer service, contact us toll free at 1 844 CAMSOAG, or 1 317 671-7327, or by email at Ag.ProductSupport@camso.co

CONNECT WITH US FOR EXCLUSIVE CONTENT



camso.co





DRIVING FARMING FORWARD

CAMSO AND CASE IH

Every day, we ask ourselves: “Is there a better way to drive farming forward?” We believe there is – by providing mobility solutions to help you get the job done.

At Camso, we do it by developing and manufacturing the broadest range of tracks for all farming applications. Camso tracks increase mobility and flotation, and reduce soil compaction.

From field preparation to planting, harvesting and transport, Camso tracks help maximize your work while lowering your operating costs.

**OUR TRACKS ARE THE APPROVED CHOICE
OF MANUFACTURERS, ENDORSED BY DEALERS
AND RECOGNIZED BY FARMERS.**

COMPLETE LINEUP

CASE IH STEIGER AND MAGNUM TRACTORS

Camsco offers the broadest range of tracks for your Case IH tractor.

CASE IH STEIGER QUADTRAC SERIES



CAMSO AG
6500



CAMSO SCR
6500



CAMSO AG
3500

CASE IH STEIGER AND MAGNUM ROWTRAC



CAMSO RD
4500

CASE IH STEIGER QUADTRAC SERIES

DESIGNED TO CASE IH SPECIFICATIONS, CAMSO TRACKS PROVIDE THE BEST BALANCE OF TREAD BAR LIFE AND DRIVE LUG DURABILITY TO MAXIMIZE THE PERFORMANCE AND EFFICIENCY OF YOUR TRACTOR.



FEATURES AND BENEFITS

CASE IH STEIGER QUADTRAC SERIES



High-grade rubber compounds

Maximizes performance and durability



Long lasting tread bar

Best balance between traction, cleanout and flotation, providing optimal traction and ride quality



Long lasting carcass

No material displacement during the manufacturing and curing process means increased durability and performance



Optimized positive drive lugs

Drive lug geometry designed specifically for Case IH Steiger Quadtrac drive wheel, allowing for maximum power transfer



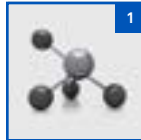







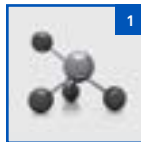







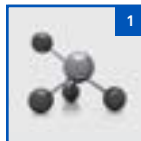






Drive lug reinforcement

6500 only: Camso's unique feature designed to minimize risk of wear and tear in demanding high-pull applications

THE RIGHT TRACK FOR YOUR APPLICATION

CASE IH STEIGER QUADTRAC SERIES



TRACK SERIES	APPLICATIONS	SUGGESTED ANNUAL HOUR USAGE	FEATURES	PERFORMANCE
CAMSO AG 6500	AG scraper, ripper, heavy tillage and row crop	1000+	 1  2  3  4  5 High-grade rubber compounds Long lasting tread bar Long lasting carcass Optimized positive drive lugs Drive lug reinforcement	DRIVE LUG DURABILITY  TREAD BAR LIFE  CARCASS DURABILITY 
CAMSO SCR 6500	Scraper	1000+	 1  2  3  4  5 High-grade rubber compounds Long lasting tread bar Long lasting carcass Optimized positive drive lugs Drive lug reinforcement	DRIVE LUG DURABILITY  TREAD BAR LIFE  CARCASS DURABILITY 
CAMSO AG 3500	General tillage and row crop	0 to 1000	 1  2  3  4 High-grade rubber compounds Long lasting tread bar Long lasting carcass Optimized positive drive lugs	DRIVE LUG DURABILITY  TREAD BAR LIFE  CARCASS DURABILITY 



TECHNICAL SPECIFICATIONS

CASE IH STEIGER QUADTRAC SERIES

CAMSO Track series	CASE IH Tractor model	Track width (in.)	Camso part number	OE part number	Tread				Drive lug		Carcass		
					Qty	Height (in.)	Tip width (in.)	Pitch (in.)	Qty	Length (in.)	Bias ply	Main cable size (mm)	Thickness (mm)
6500	Steiger Quadtrac	30	E30BE02858	84606975	84	2	1.7	6	42	4.2	3	5.4	35
		30	E30BE02837 Scraper	84606977	84	1.6	2.4	6	42	4.2	3	5.4	35
		32	E32BF03178	47980810	84	2	1.7	6	42	4.2	3	5.4	35
		32	E32BF03189 Scraper	47980865	84	1.6	2.4	6	42	4.2	3	5.4	35
		36	E26BE02857	84606976	84	2	1.7	6	42	4.2	3	5.4	35
	9300	30	E30BD02855		78	2	1.7	6	39	4.2	3	5.4	35
		30	E30BD02856 Scaper		78	1.6	2.4	6	39	4.2	3	5.4	35
3500	Steiger Quadtrac	30	634-3023	84182440	84	2	1.7	6	42	4.2	3	5.4	35
		32	B32BF03177	47980864	84	2	1.7	6	42	4.2	3	5.4	35
		36	634-3616	84214145	84	2	1.7	6	42	4.2	3	5.4	35
	9300	30	634-3026	84341573	78	2	1.7	6	39	4.2	3	5.4	35
		36	634-3638		78	2	1.7	6	39	4.2	3	5.4	35

Warranty: Camso is the industry standard for warranty coverage on Agricultural tracks. Tracks are warrantied against defects in materials and workmanship, and prorated based on both time and usage, so customers receive fair value on warranty replacement tracks. Some conditions apply. Refer to the warranty certificate for details. For more info, visit camso.co/agriculture

CASE IH

MAGNUM AND STEIGER ROWTRAC SERIES

DESIGNED TO CASE IH
SPECIFICATIONS, CAMSO TRACKS
PROVIDE THE BEST BALANCE
OF TREAD BAR LIFE AND DRIVE LUG
DURABILITY TO MAXIMIZE
THE PERFORMANCE AND EFFICIENCY
OF YOUR TRACTOR.



FEATURES AND BENEFITS

CASE IH MAGNUM AND STEIGER ROWTRAC SERIES



High-grade rubber compounds

Maximizes performance and durability



High roading tread bar

Enhanced tread bar shape and advanced rubber compounds allowing for faster speeds



Long lasting carcass

Most durable, consistent and predictable performance due to Camso's unique manufacturing and curing process



Optimized drive lugs

Drive lug geometry specifically designed for Case IH Steiger and Magnum Rowtrac drive wheel, allowing for maximum power transfer



4-Ply carcass

Carcass specifically designed for high-speed roading, enduring higher internal temperatures



TECHNICAL SPECIFICATIONS

CASE IH MAGNUM AND STEIGER ROWTRAC SERIES

CAMSO Track series	CASE IH Tractor model	Track width (in.)	Camso part number	OE part number	Tread				Drive lug		Carcass		
					Qty	Height (in.)	Tip width (in.)	Pitch (in.)	Qty	Length (in.)	Bias ply	Main cable size (mm)	Thickness (mm)
6500	Steiger and Magnum RowTrac	16	F16BG03401	51417218	88	1.8	3.2	6	44	4.7	4	5.4	35
		18	F18BG03374	51417219	88	1.8	3.2	6	44	4.7	4	5.4	35
		21	F21BG03413	51444172	88	1.8	3.2	6	44	4.7	4	5.4	35
		24	F24BG03397	51417221	88	1.8	3.2	6	44	4.7	4	5.4	35
		30	F30BG03402	51417222	88	1.8	3.2	6	44	4.7	4	5.4	35
		30	F30BG03662	NA	88	2.0	2.0	6	44	4.7	4	5.4	35

Warranty: Camso is the industry standard for warranty coverage on Agricultural tracks. Tracks are warrantied against defects in materials and workmanship, and prorated based on both time and usage, so customers receive fair value on warranty replacement tracks. Some conditions apply. Refer to the warranty certificate for details. For more info, visit camso.co/agriculture

DRIVEN BY QUALITY PERFORMANCE AND DURABILITY FROM THE INSIDE OUT

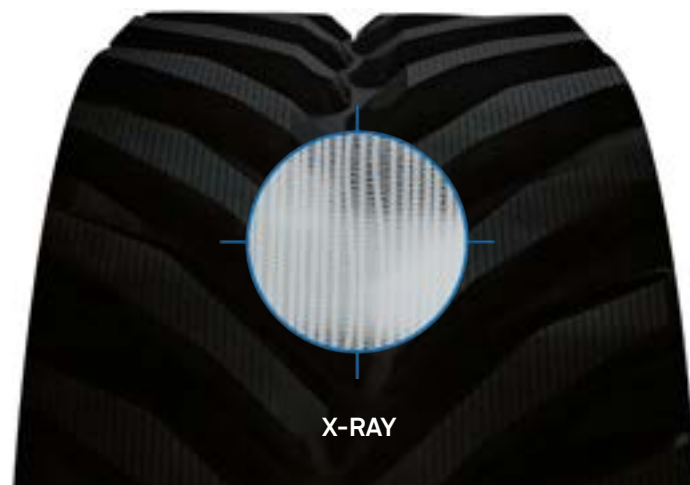
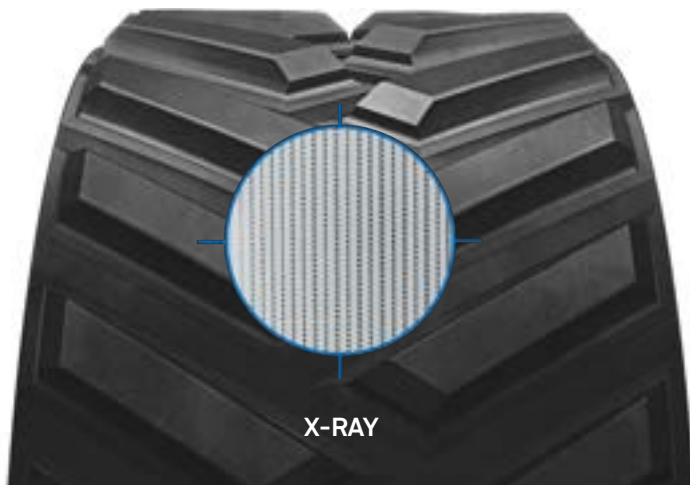
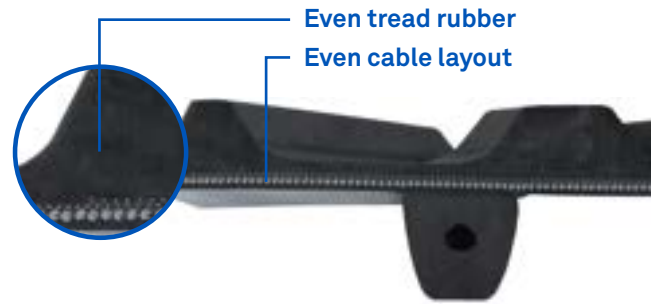
Camso long lasting carcass

No material displacement during the manufacturing and curing process means:

- Rubber compounds located exactly where you need them
- Uniform tension distribution, minimizing downtime due to carcass tear
- A product with increased durability and performance

CAMSO'S UNIQUE
SINGLE CURE PROCESS

COMPETITOR
MOLDING PROCESS



DURABLE, CONSISTENT AND PREDICTABLE PERFORMANCE



**SAVE
TIME AND
MONEY WHILE
MAXIMIZING
UPTIME**



2-PIECE POLYURETHANE MIDROLLER CONVERSION KIT

TECHNICAL SPECIFICATIONS

PRODUCT FAMILY	CAMSO PART NUMBER	DESCRIPTION	MODEL/TRACK WIDTH COMPATIBILITY
STEIGER QUADTRAC			
Midroller conversion kit	2A-2045-100	Kit	All
Midroller only (for conversion kit)	4W-5040P	Polyurethane	All



2-PIECE POLYURETHANE MIDROLLER CONVERSION KIT FOR CASE IH STEIGER QUADTRAC

The new Camso 2-piece polyurethane midroller kit includes an adapter hub which eliminates the need to replace seals and bearings everytime a midroller is replaced

WHAT DOES THIS MEAN?

- Midrollers can now be easily swapped by simply removing bolts
- Changing a midroller becomes a simple 15-minute task instead of a 2-hour job requiring additional replacement parts