



# 2021 CAMSO SNOWMOBILE TRACKS





## TABLE OF CONTENTS

Feel the difference _____	4
Whatever your style is _____	5
Do more with technology _____	6
<b>Trail</b>	<b>8</b>
<b>Cross-Country</b>	<b>16</b>
<b>Mountain</b>	<b>24</b>
<b>Utility</b>	<b>32</b>
<b>Racing</b>	<b>37</b>
The 4 keys to track selection _____	40
Search by length (specifications) _____	41



# WHY A NEW TRACK?

For a number of reasons...Has your sled lost the edge it had when you first bought it? Are you looking to do more with your stock machine? Because a replacement track can push your journey to new levels of performance. Why shell out big bucks for a new sled or risk voiding your warranty with performance-enhancing engine modifications? Camso tracks are an effective and affordable way to extend the life of your sled.

## Feel the difference

Camso track will go beyond limits.

- Better traction on any surface
- Better handling and stability
- Quicker acceleration
- Shorter stopping distances on hard surfaces
- Better flotation in soft, deep snow

# WHATEVER YOUR STYLE IS, CAMSO HAS THE RIGHT TRACK

It doesn't matter if you're a recreational rider or a racer, whether you prefer groomed trails or backcountry exploration, whether you seek the adrenaline rush of steep terrain or the comfort of a casual cruise in the countryside. As riders, we share one thing: our passion for snow. We love it. We pray for it. We live the journey.

To get the maximum excitement out of your sled in the conditions you prefer, select the best track for the type of rider you are.

## TRAIL

You're someone who loves well-defined routes, a cruiser doing big mileage, an aggressive rider with a thrill of top-notch traction, or a power rider flooring it on the straightaways.

- Groomed snowmobile trails
- Ungroomed trails used enough to be compacted most or all of the time
- Bare or lightly covered ice with special traction challenges

## CROSS-COUNTRY

You prefer deeper, looser snow. Racking up the miles in the backcountry? Check. Half on-trail, half off? Check.

- Ditch lines
- Less-used and completely ungroomed trails
- Boondocking in remote areas with no trails

## MOUNTAIN

You relish any trip that involves high-country open meadows, boondocking in the trees and lots of deep snow.

- Deep powder snow with a light track for maximum traction and flotation
- High-altitude terrain
- Steep slopes

## UTILITY

You're working in the snow. You have a job to do in demanding and unpredictable conditions.

- Transportation of personnel and tools
- Pulling equipment and material
- Unpredictable snow and terrain

## RACING

You are competing on a specific terrain and controlled course:

- Asphalt
- Ice and grass drag
- Ice oval
- Snocross
- Snow and hill drag



# DO MORE WITH TECHNOLOGY

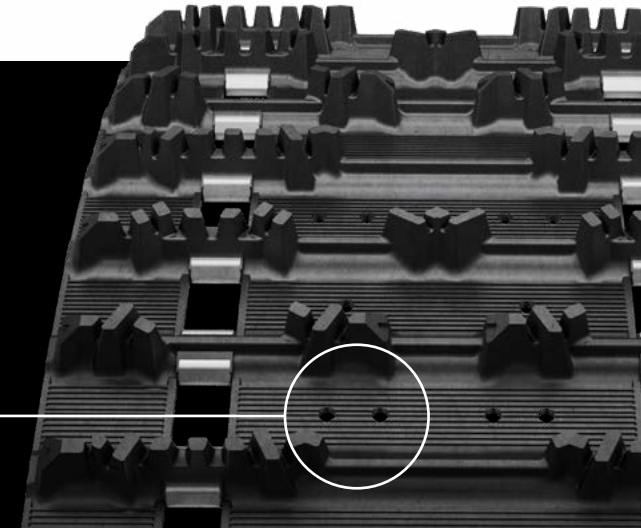
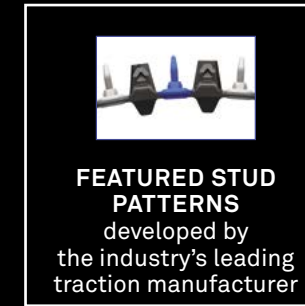
Find this pictogram on the product pages to help you choose the right track for your sled.

## ENHANCED STUD EASY TRACKS

Our pre-holed models are a great choice for trail sled applications.

- No drilling necessary, with quick, easy stud installation
- Track belting is enhanced and properly punched for studding
- One-year limited warranty\*

\* Studs and related hardware are excluded from the Camso limited warranty.

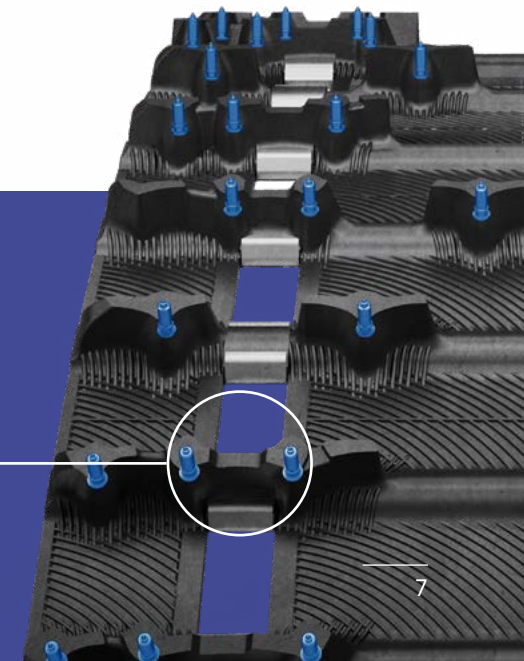


Find this pictogram on the product pages to help you choose the right track for your sled.

## OPTIMIZED TRACK CONSTRUCTION

Advanced track technology reduces weight and improves performance.

- Lower internal friction means you use less engine power
- Cooler running results in longer track life
- Reduced rolling resistance for improved top speed and fuel economy

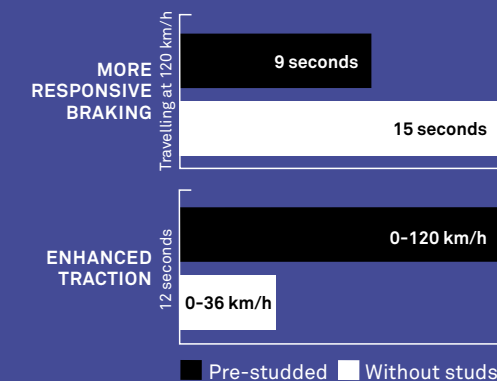


Find this pictogram on the product pages to help you choose the right track for your sled.

## EMBEDDED SHARP TIP LUG STUDS

Our factory pre-studded tracks provide enhanced traction and control over tracks without studs as well as convenience and savings compared to conventional studding.

- Better control on icy hills and corners
- Only adds 1lb of weight to the track
- No stud installation or maintenance costs







TRAILS

## On-trail aggressive riders, power riders or cruisers

**Tame the trails, no matter what the conditions:**

**Cruisers** seeking smooth handling for big-mile efficiency and touring groomed trails all day long.

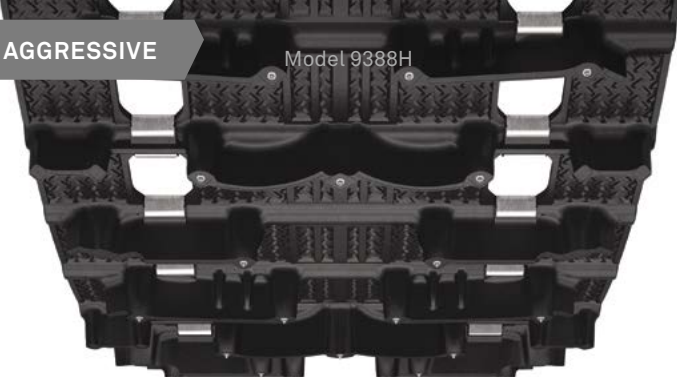
**Aggressive riders** who live for the adrenaline rush of top-notch traction that slingshots them around corners and crushes moguls.

**Power riders with a need for speed :** pure acceleration across lake, trails and endless straightaways.

## WHICH TRAIL TRACK IS RIGHT FOR YOU?

		LUG HEIGHT (in)										
		ICE Storm 150 ▲	Storm 150	Cobra	RipSaw	RipSaw II	ICE Ripper XT ▲	ICE Attak XT ▲	ICE Attak ▲	HackSaw	RipSaw	RipSaw II
		1.5	1.5	1.352	1.25	1.25	1.25	1.22	1.063	1	1	1
RIDING STYLE	AGGRESSIVE	Versatility	■	■			■		■			
		Mostly Groomed	■	■		■			■			
		Mostly Ungroomed	■	■	■				■			
	POWER	Trail					■			■		■
		Lake				■				■	■	
	CRUISER	Traction					■		■	■		■
		Efficiency						■		■	■	

Model 9388H



## CAMSO ICE Storm 150

Precision and control

With its factory-installed studs, the Camso Ice Storm 150 makes precise turns on icy hills, packed snow and groomed trails, powering you through the most challenging conditions with ease. And Camso's unique two-height lug design offers deep snow flotation with handlebar-gripping acceleration.

- Factory pre-studded for improved traction and control on ice conditions
- 1.25" outer lugs provide power through the tightest turns with ease, maintaining momentum and rider control
- 1.5" cup-shaped centre lugs provide deep snow flotation, and gut wrenching acceleration on packed trails

Model 9368H



## CAMSO Storm 150

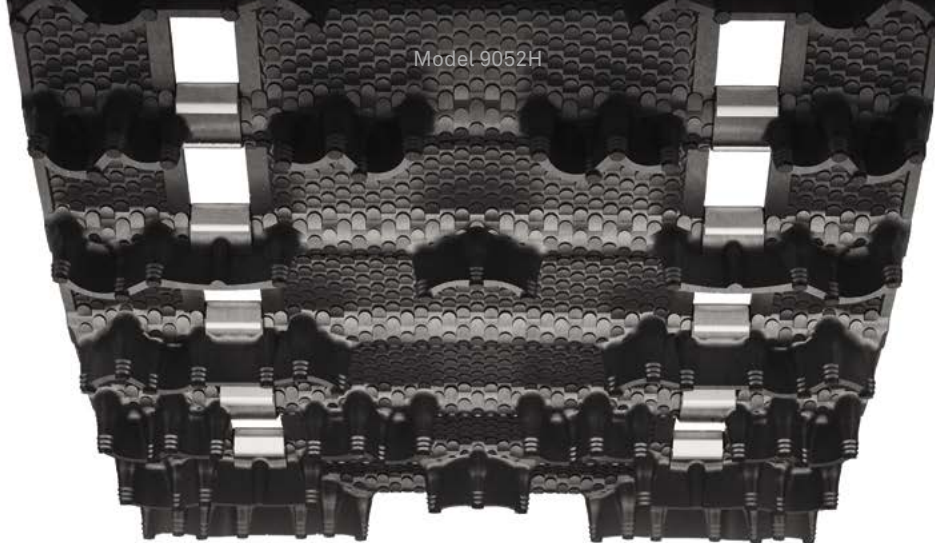
Precision and thundering acceleration

For aggressive adrenaline-fueled performance both on and off trail. The Camso Storm 150 is designed for modern rider-forward with a unique two-lug height design. It provides breathtaking acceleration on-trail, excellent flotation off-trail and crisp control under all circumstances.

- 1.25" outer lugs provide power through the tightest turns with ease, maintaining momentum and rider control
- 1.5" cup-shaped centre lugs provide deep snow flotation, and gut wrenching acceleration on packed trails
- Optimized support columns provide the right balance of lug rigidity and flex for performance across the entire power band

MODEL	DIMENSIONS	LUG HEIGHT	WEIGHT	DRIVE PITCH	NB. STUDS	CLIP CONFIG.	MODEL	DIMENSIONS	LUG HEIGHT	WEIGHT	DRIVE PITCH	CLIP CONFIG.
9388H	15" x 120" (38 cm x 305 cm)	1.5" (38 mm)	34.7 lb. (15.7 kg)	2.86" (73 mm)	126	Full ▲■	9368H	15" x 120" (38 cm x 305 cm)	1.5" (38 mm)	34.7 lb. (15.7 kg)	2.86" (73 mm)	Full
9389H	15" x 129" (38 cm x 328 cm)	1.5" (38 mm)	37.2 lb. (16.9 kg)	2.86" (73 mm)	135	Full ▲■	9369H	15" x 129" (38 cm x 328 cm)	1.5" (38 mm)	37.2 lb. (16.9 kg)	2.86" (73 mm)	Full
9390H	15" x 137" (38 cm x 348 cm)	1.5" (38 mm)	39.6 lb. (17.9 kg)	2.86" (73 mm)	144	Full ▲■	9370H	15" x 137" (38 cm x 348 cm)	1.5" (38 mm)	39.6 lb. (17.9 kg)	2.86" (73 mm)	Full
9391H	15" x 146" (38 cm x 370 cm)	1.5" (38 mm)	42.1 lb. (19.1 kg)	2.86" (73 mm)	153	Full ▲■	9371H	15" x 146" (38 cm x 370 cm)	1.5" (38 mm)	42.1 lb. (19.1 kg)	2.86" (73 mm)	Full

Model 9052H



## CAMSO Cobra

Keep a firm grip on the trail

Designed for comfort as well as superior traction and control on soft, loose and unpacked snow surfaces.

- Cupped lugs for superior acceleration and braking in loose soft snow conditions
- Flexible lug design for superior off-trail performance
- Softer, thinner lugs generate less noise for improved rider comfort

MODEL	DIMENSIONS	LUG HEIGHT	WEIGHT	DRIVE PITCH	CLIP CONFIG.
9052H	15" x 121" (38 cm x 307 cm)	1.352" (34 mm)	37 lb. (16.75 kg)	2.52" (64 mm)	Full
9061H	15" x 136" (38 cm x 345 cm)	1.352" (34 mm)	42 lb. (19 kg)	2.52" (64 mm)	Full
9107H	15" x 144" (38 cm x 366 cm)	1.352" (34 mm)	44 lb. (20 kg)	2.52" (64 mm)	Full
9120H <sup>1</sup>	15" x 146" (38 cm x 371 cm)	1.352" (34 mm)	40 lb. (18.25 kg)	2.86" (73 mm)	Full ■
9235H	15" x 129" (38 cm x 328 cm)	1.352" (34 mm)	36 lb. (16.25 kg)	2.86" (73 mm)	Full
9284H	15" x 120" (38 cm x 305 cm)	1.352" (34 mm)	34 lb. (15.5 kg)	2.86" (73 mm)	Full
9307H	15" x 137" (38 cm x 348 cm)	1.352" (34 mm)	39 lb. (17.75 kg)	2.86" (73 mm)	Full

<sup>1</sup> These track models feature center hole for third driver.



## CAMSO

## RipSaw

Excellent durability and traction

One of the best sellers offered, with rigid, hard-wearing lugs for mile after mile of dependable use. A wide range of sizes fits many different snowmobiles. This is the benchmark model for high-performance trail tracks, with excellent durability and traction on groomed or hard-pack snow.

- Rigid lugs provide superior handling, acceleration, and braking on groomed trails
- Narrow lug base for reduced rolling resistance and maximum top speed
- Angled profiles for aggressive forward and lateral bite

## CAMSO

## RipSaw II

All-around performer in all types of snow

Designed for all-around trail performance – excellent traction on both hard-pack and loose, less-compacted snow with ride comfort features.

- Tapered outside lug edges for less side bite when cornering
- Sharp angled lugs for excellent bite on hard-pack snow
- Cupped center and full outer lugs for traction on loose, less-compacted snow
- Lug design generates less noise for improved rider comfort on hard-packed groomed trails

## CAMSO

## ICE Ripper XT

Handles and holds

The original factory pre-studded track is a proven performer. With a design that gives riders outstanding handling and stability, it's a true classic.

- Factory pre-studded for improved traction and control
- 1.25" lug height for improved traction and stability
- RipSaw-based attack angled lugs for excellent forward and lateral bite

## CAMSO

## ICE Attak XT

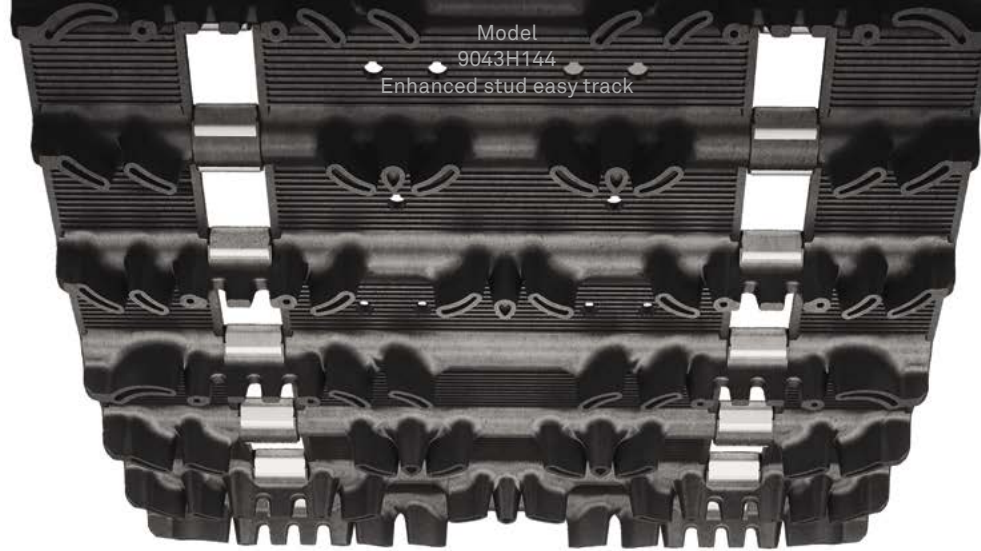
Nailed to the trail

A highly aggressive trail model design featuring hundreds of sharp-tip lug studs, giving riders traction and control they can count on.

- Factory pre-studded for improved traction and control
- Lug design delivers better traction than the ICE Ripper XT
- 1.22" lug height provides better handling and stability
- Optimized rubber compound for superior traction on groomed trail

MODEL	DIMENSIONS	LUG HEIGHT	WEIGHT	DRIVE PITCH	CLIP CONFIG.	MODEL	DIMENSIONS	LUG HEIGHT	WEIGHT	DRIVE PITCH	CLIP CONFIG.
9001H	13.5" x 128" (34 cm x 325 cm)	1.25" (32 mm)	34 lb. (15.5 kg)	2.52" (64 mm)	Every 3 <sup>rd</sup> / closed windows	9209H	15" x 120" (38 cm x 305 cm)	1.25" (32 mm)	37 lb. (16.75 kg)	2.86" (73 mm)	Full
9006H	15" x 144" (38 cm x 366 cm)	1.25" (32 mm)	45 lb. (20.5 kg)	2.52" (64 mm)	Full	9214H	15" x 121" (38 cm x 307 cm)	1.25" (32 mm)	41 lb. (18.5 kg)	2.52" (64 mm)	Full
9040H	15" x 128" (38 cm x 325 cm)	1.25" (32 mm)	41 lb. (18.5 kg)	2.52" (64 mm)	Full	9215H	15" x 128" (38 cm x 325 cm)	1.25" (32 mm)	43 lb. (19.5 kg)	2.52" (64 mm)	Full
9148H	15" x 120" (38 cm x 305 cm)	1" (25 mm)	32 lb. (14.5 kg)	2.86" (73 mm)	Full	9216H	15" x 136" (38 cm x 345 cm)	1.25" (32 mm)	45 lb. (20.5 kg)	2.52" (64 mm)	Full
9149H	15" x 120" (38 cm x 305 cm)	1.25" (32 mm)	35 lb. (16 kg)	2.86" (73 mm)	Full	9223H	15" x 137" (38 cm x 348 cm)	1.25" (32 mm)	42 lb. (19 kg)	2.86" (73 mm)	Full
9968H	15" x 121" (38 cm x 307 cm)	1.25" (32 mm)	40 lb. (18.25 kg)	2.52" (64 mm)	Full	9224H	15" x 137" (38 cm x 348 cm)	1" (25 mm)	38 lb. (17.25 kg)	2.86" (73 mm)	Full
9968H144	15" x 121" (38 cm x 307 cm)	1.25" (32 mm)	38 lb. (17.25 kg)	2.52" (64 mm)	Full ●	9237H	15" x 129" (38 cm x 328 cm)	1.25" (32 mm)	39 lb. (17.75 kg)	2.86" (73 mm)	Full
9969H	15" x 136" (38 cm x 345 cm)	1.25" (32 mm)	43 lb. (19.5 kg)	2.52" (64 mm)	Full	9325H	15" x 129" (38 cm x 328 cm)	1" (25 mm)	35 lb. (15.87 kg)	2.86" (73 mm)	Full
9007H	15" x 151" (38 cm x 383 cm)	1.25" (32 mm)	49 lb. (22.23 kg)	2.52" (64 mm)	Full						

MODEL	DIMENSIONS	LUG HEIGHT	WEIGHT	DRIVE PITCH	NB. STUDS	CLIP CONFIG.	MODEL	DIMENSIONS	LUG HEIGHT	WEIGHT	DRIVE PITCH	NB. STUDS	CLIP CONFIG.
9077H	15" x 121" (38 cm x 307 cm)	1.25" (32 mm)	39 lb. (17.75 kg)	2.52" (64 mm)	256	Full ▲ ■	9190H	15" x 120" (38 cm x 305 cm)	1.22" (31 mm)	37 lb. (16.75 kg)	2.86" (73 mm)	224	Full ▲ ■
9164H	15" x 120" (38 cm x 305 cm)	1.25" (32 mm)	36 lb. (16.25 kg)	2.86" (73 mm)	224	Full ▲ ■	9191H	15" x 137" (38 cm x 348 cm)	1.22" (31 mm)	42 lb. (19 kg)	2.86" (73 mm)	256	Full ▲ ■
							9192H	15" x 146" (38 cm x 371 cm)	1.22" (31 mm)	44 lb. (20 kg)	2.86" (73 mm)	272	Full ▲ ■
							9200H	15" x 121" (38 cm x 307 cm)	1.22" (31 mm)	40 lb. (18.25 kg)	2.52" (64 mm)	256	Full ▲ ■
							9201H	15" x 128" (38 cm x 325 cm)	1.22" (31 mm)	42 lb. (19 kg)	2.52" (64 mm)	272	Full ▲ ■
							9202H	15" x 136" (38 cm x 345 cm)	1.22" (31 mm)	45 lb. (20.5 kg)	2.52" (64 mm)	288	Full ▲ ■
							9203H	15" x 144" (38 cm x 365 cm)	1.22" (31 mm)	47 lb. (21.25 kg)	2.52" (64 mm)	304	Full ▲ ■
							9236H	15" x 129" (38 cm x 328 cm)	1.22" (31 mm)	39 lb. (17.75 kg)	2.86" (73 mm)	240	Full ▲ ■



CAMSO  
**ICE Attak**

Top handling and speed for trail cruising

Popular with trail cruisers, with tried-and-tested sharp-tip studs. An excellent choice for snowmobiles that cannot fit taller tracks, it's designed to deliver outstanding top speed and handling on hard-pack snow.

- Factory pre-studded with aggressive 31-point stud pattern
- HackSaw-based lug design for good top speed and handling on hard-pack snow
- 1.063" lug height for average trail use and efficiency

MODEL	DIMENSIONS	LUG HEIGHT	WEIGHT	DRIVE PITCH	NB. STUDS	CLIP CONFIG.
9028H	15" x 121" (38 cm x 307 cm)	1.063" (27 mm)	38 lb. (17.25 kg)	2.52" (64 mm)	264	Full ▲ ■
9029H	15" x 136" (38 cm x 345 cm)	1.063" (27 mm)	43 lb. (19.5 kg)	2.52" (64 mm)	297	Full ▲ ■

CAMSO  
**HackSaw**

Durability meets efficiency and speed

A proven performer in the 1" category. Attack angle lugs guarantee superior performance on hard-groomed snow trails.

- 1" lug height for low rolling resistance that improves fuel economy
- Crescent lug features recessed tips and cutting edges for forward and lateral bite on hard-pack
- Hard-wearing rigid lugs for mile after mile of dependable use
- Narrow lug base to reduce rolling resistance and maximize top speed

MODEL	DIMENSIONS	LUG HEIGHT	WEIGHT	DRIVE PITCH	CLIP CONFIG.
9010H	15" x 136" (38 cm x 345 cm)	1" (25 mm)	40 lb. (18.25 kg)	2.52" (64 mm)	Full
9043H144	15" x 121" (38 cm x 307 cm)	1" (25 mm)	36 lb. (16.25 kg)	2.52" (64 mm)	Full ●
9110H <sup>1</sup>	14" x 128" (36 cm x 325 cm)	1" (25 mm)	34 lb. (15.5 kg)	2.52" (64 mm)	Full
9234H	15" x 128" (38 cm x 325 cm)	1" (25 mm)	35 lb. (16 kg)	2.52" (64 mm)	Every 3 <sup>rd</sup> / open windows

<sup>1</sup> Narrow track design





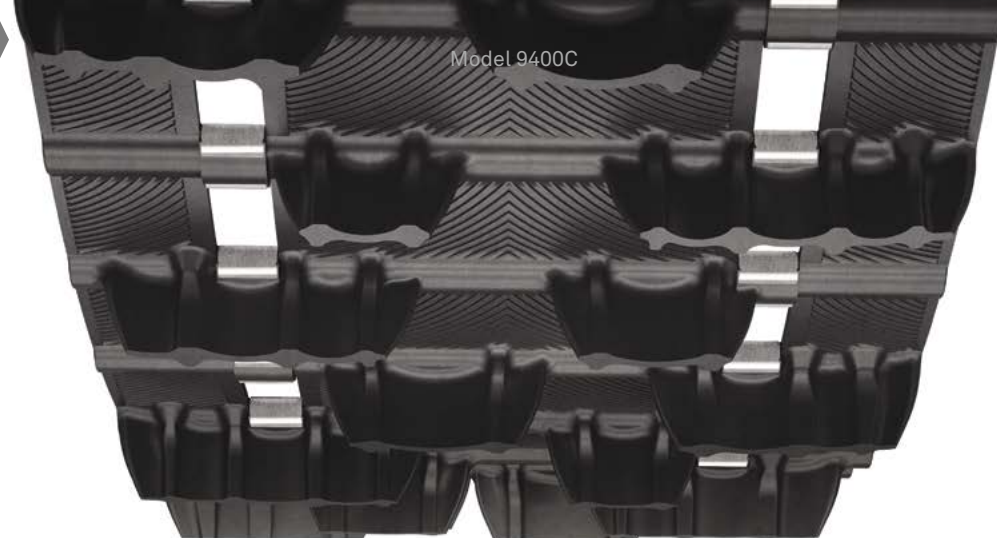
**CROSS-COUNTRY**

**50/50  
and backcountry riders**

**Boost your crossover or trail sled**  
**50/50 riders** rack up the trail miles, but give them half a chance and they're off the trail, playing in an open, untracked meadow or riding a ditch line.  
**Backcountry riders** don't need any second invitations to head out into untravelled pristine powder and deep snow.

**WHICH CROSS-COUNTRY TRACK IS RIGHT FOR YOU?**

		LUG HEIGHT (in)								
		Hurricane 175	BackCountry X2	Challenger Trail	BackCountry X	BackCountry	ICE Cobra 1.6	Cobra 1.6	Intense	RipSaw II 1.5
		1.75	2	1.75	1.75	1.75	1.6	1.6	1.5	1.5
RIDING STYLE	50/50									
	BACK-COUNTRY									



CAMSO

# Hurricane 175

Dominate deep backcountry

Inspired by mountain track lug geometry, the Hurricane 175 is the perfect balance between deep snow technology and trail-gripping adrenaline. Its 1.75-inch cupped profile design will take you deeper into the backcountry and out again.

- Designed based on mountain tracks, it provides off-trail performance in deep snow while maintaining on-trail agility
- 1.75-inch tall lug profile design reduces vibration, applying more power to the ground both on and off trail
- Optimal column positioning for better track efficiency and enhanced traction in deep-powder snow while ensuring durability in all conditions

MODEL	DIMENSIONS	LUG HEIGHT	WEIGHT	DRIVE PITCH	CLIP CONFIG.
9400C	15" x 120" (38 cm x 305 cm)	1.75" (44 mm)	35 lb. (16.3 kg)	2.86" (73 mm)	Full
9401C	15" x 129" (38 cm x 328 cm)	1.75" (44 mm)	37 lb. (17.4 kg)	2.86" (73 mm)	Full
9402C	15" x 137" (38 cm x 348 cm)	1.75" (44 mm)	40 lb. (18.6 kg)	2.86" (73 mm)	Full
9403C	15" x 146" (38 cm x 371 cm)	1.75" (44 mm)	42 lb. (19.7 kg)	2.86" (73 mm)	Full

CAMSO

# BackCountry X2

Explore deeper

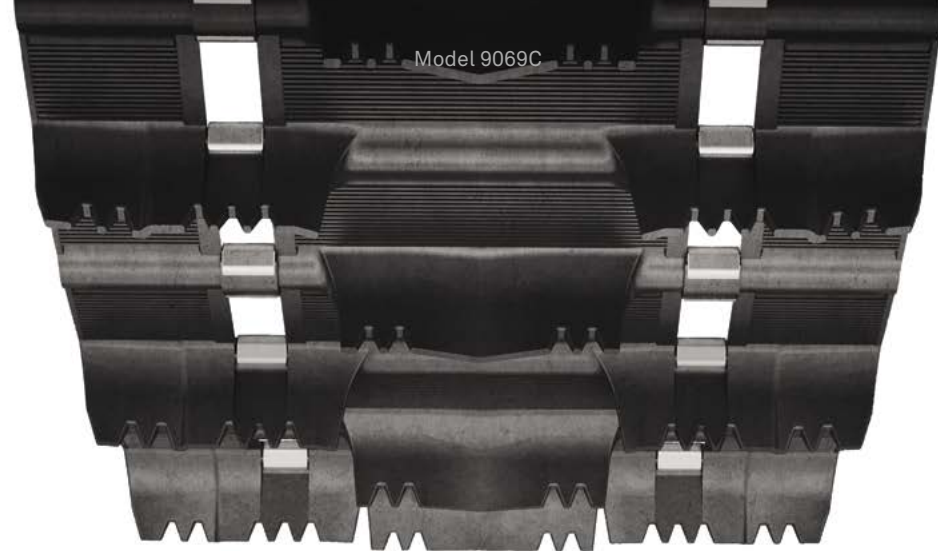
The BackCountry, taken to another level. Our most popular on/off-trail track, now with a lug height of 2" that lets you explore deep into the backcountry.

- Arched lug design with staggered snocross-inspired pattern for excellent soft snow traction
- Rigid lug support columns and optimized rubber compound to deliver great on/off-trail performance
- 2.86" drive pitch

MODEL	DIMENSIONS	LUG HEIGHT	WEIGHT	DRIVE PITCH	CLIP CONFIG.
9256C	15" x 120" (38 cm x 305 cm)	2" (51 mm)	41 lb. (18.5 kg)	2.86" (73 mm)	Full
9257C	15" x 129" (38 cm x 328 cm)	2" (51 mm)	43 lb. (19.5 kg)	2.86" (73 mm)	Full
9258C	15" x 137" (38 cm x 348 cm)	2" (51 mm)	46 lb. (20.75 kg)	2.86" (73 mm)	Full
9417C <sup>1</sup>	15" x 146" (38 cm x 371 cm)	2" (51 mm)	48lb (21.8kg)	2.86" (73 mm)	Full

<sup>1</sup> These track models feature center hole for third driver.





**CAMSO**  
**Challenger Trail**

Lead the way

The go-to track for outstanding deep-snow performance since the mid-90s. As an all-around performer that's both versatile and durable, it delivers off-trail capability without sacrificing trail performance.

- Saw-tooth-tipped lugs provide excellent handling, acceleration, and braking on packed trails
- 16" width enhances flotation off-trail in soft snow

MODEL	DIMENSIONS	LUG HEIGHT	WEIGHT	DRIVE PITCH	CLIP CONFIG.
9070C	16" x 137" (41 cm x 348 cm)	1.75" (44 mm)	45 lb. (20.5 kg)	2.86" (73 mm)	Full
9167C	16" x 146" (41 cm x 371 cm)	1.75" (44 mm)	51 lb. (23 kg)	2.86" (73 mm)	Full



**CAMSO**  
**BackCountry X**

Make your own path

Well-known as a frontrunner for on/off-trail riding, with a 1.75" lug height and increased drive pitch. Developed and tested in competitive snocross racing environments, it's designed with traction and durability in mind.

- Arched lug design with staggered snocross-inspired pattern for excellent soft snow traction
- 2.86" drive pitch models feature tapered lugs on outside edges for improved durability
- 3" drive pitch also available

MODEL	DIMENSIONS	LUG HEIGHT	WEIGHT	DRIVE PITCH	CLIP CONFIG.
9254C	15" x 141" (38 cm x 382 cm)	1.75" (44 mm)	43 lb. (19.5 kg)	3" (76 mm)	Full
9287C	15" x 120" (38 cm x 305 cm)	1.75" (44 mm)	39 lb. (17.5 kg)	2.86" (73 mm)	Full
9288C	15" x 129" (38 cm x 328 cm)	1.75" (44 mm)	42 lb. (19 kg)	2.86" (73 mm)	Full
9289C	15" x 137" (38 cm x 345 cm)	1.75" (44 mm)	43 lb. (19.5 kg)	2.86" (73 mm)	Full
9328C	15" x 153" (38 cm x 388 cm)	1.75" (44 mm)	46 lb. (20.75 kg)	3" (76 mm)	Full



**CAMSO**  
**BackCountry**

Make your own path

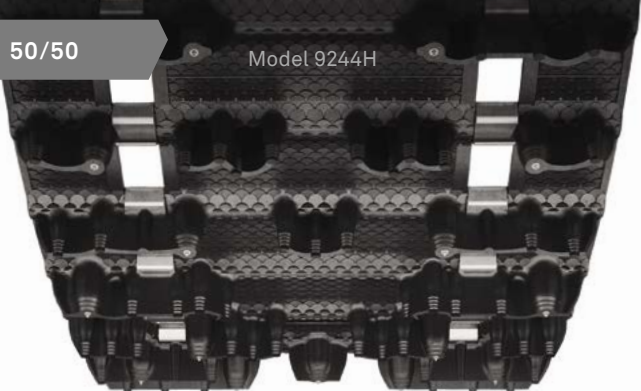
Recognized as a frontrunner for on/off-trail riding, with a 1.75" lug height. Developed and tested in competitive snocross racing environments, it's designed with traction and durability in mind.

- Arched lug design with staggered snocross-inspired pattern for excellent soft snow traction
- 2.52" drive pitch

MODEL	DIMENSIONS	LUG HEIGHT	WEIGHT	DRIVE PITCH	CLIP CONFIG.
9140C	15" x 121" (38 cm x 307 cm)	1.75" (44 mm)	40 lb. (18.25 kg)	2.52" (64 mm)	Full
9141C	15" x 128" (38 cm x 325 cm)	1.75" (44 mm)	42 lb. (19 kg)	2.52" (64 mm)	Full
9142C	15" x 136" (38 cm x 345 cm)	1.75" (44 mm)	44 lb. (20 kg)	2.52" (64 mm)	Full
9143C	15" x 144" (38 cm x 366 cm)	1.75" (44 mm)	46 lb. (20.75 kg)	2.52" (64 mm)	Full

50/50

Model 9244H



Model 9262C



50/50

50/50

Model 9108C



Model 9304C



50/50

CAMSO

# ICE Cobra 1.6

Excellent grip in soft snow

The "Denis Courtemanche Special Edition," in honor of long-time recreational products director who has devoted 50 years to improving snowmobile track design. Factory pre-studded with 1.6" lugs for excellent all-round performance, especially on ungroomed trails.

- Cupped lugs for superior acceleration and braking in loose, soft snow conditions
- Flexible lug design for superior off-trail performance

CAMSO

# Cobra 1.6

Performance, on or off the trail

The Cobra design taken to another level. Excellent performance on the soft, loose snow of ungroomed trails, now available in a 1.6" lug height for even better traction and performance while on/off-trail.

- Cupped lugs for superior acceleration and braking in loose, soft snow conditions
- Flexible lug design for superior off-trail performance
- Designed for factory pre-studded, select lugs are more rigid for traction on hard-packed snow performance

CAMSO

# Intense

Purely driven by snow

Featuring a 1.5" lug height for on/off-trail riders, this long-time favorite has a proven record of performance and durability. Excellent performer in all types of snow conditions.

- Saw-tooth-tipped lugs provide excellent handling, acceleration, and braking on packed trails
- V-shaped and full lugs for excellent traction in soft, loose snow

CAMSO

# RipSaw II 1.5

All-around on- and off-trail performer

The RipSaw II, known for its versatility in all snow types, is taken to another level. Now boasting a 1.5-inch lug height, it's the track for the most demanding 50/50 rider.

- Sharp angled lugs provide excellent bite on hard-pack snow
- Cupped center and full outer lugs provide traction on loose, less compacted snow
- Tapered outside lug edges offer less side bite when cornering

MODEL	DIMENSIONS	LUG HEIGHT	WEIGHT	DRIVE PITCH	NB. STUDS	CLIP CONFIG.
9244C	15" x 120" (38 cm x 305 cm)	1.6" (43 mm)	38 lb. (17.25 kg)	2.86" (73 mm)	91	Full ▲ ■
9245C	15" x 129" (38 cm x 328 cm)	1.6" (43 mm)	41 lb. (18.5 kg)	2.86" (73 mm)	97	Full ▲ ■
9246C	15" x 137" (38 cm x 348 cm)	1.6" (43 mm)	43 lb. (19.5 kg)	2.86" (73 mm)	104	Full ▲ ■
9247C	15" x 146" (38 cm x 371 cm)	1.6" (43 mm)	46 lb. (20.9 kg)	2.86" (73 mm)	110	Full ▲ ■
9249C	16" x 137" (41 cm x 348 cm)	1.6" (43 mm)	45 lb. (20.75 kg)	2.86" (73 mm)	104	Full ▲ ■
9250C	16" x 146" (41 cm x 371 cm)	1.6" (43 mm)	48 lb. (21.8 kg)	2.86" (73 mm)	110	Full ▲ ■
9272C	16" x 154" (41 cm x 391 cm)	1.6" (43 mm)	50 lb. (22.5 kg)	2.86" (73 mm)	117	Full ▲ ■
9273C <sup>1</sup>	15" x 154" (38 cm x 391 cm)	1.6" (43 mm)	47 lb. (21.25 kg)	2.86" (73 mm)	117	Full ▲ ■
9312C	15" x 121" (38 cm x 307 cm)	1.6" (43 mm)	42 lb. (19.1 kg)	2.52" (64 mm)	104	Full ▲
9313C	15" x 128" (38 cm x 325 cm)	1.6" (43 mm)	44.5 lb. (20.2 kg)	2.52" (64 mm)	110	Full ▲
9314C	15" x 136" (38 cm x 345 cm)	1.6" (43 mm)	47 lb. (21.3 kg)	2.52" (64 mm)	117	Full ▲
9315C	15" x 144" (38 cm x 366 cm)	1.6" (43 mm)	50 lb. (22.7 kg)	2.52" (64 mm)	123	Full ▲

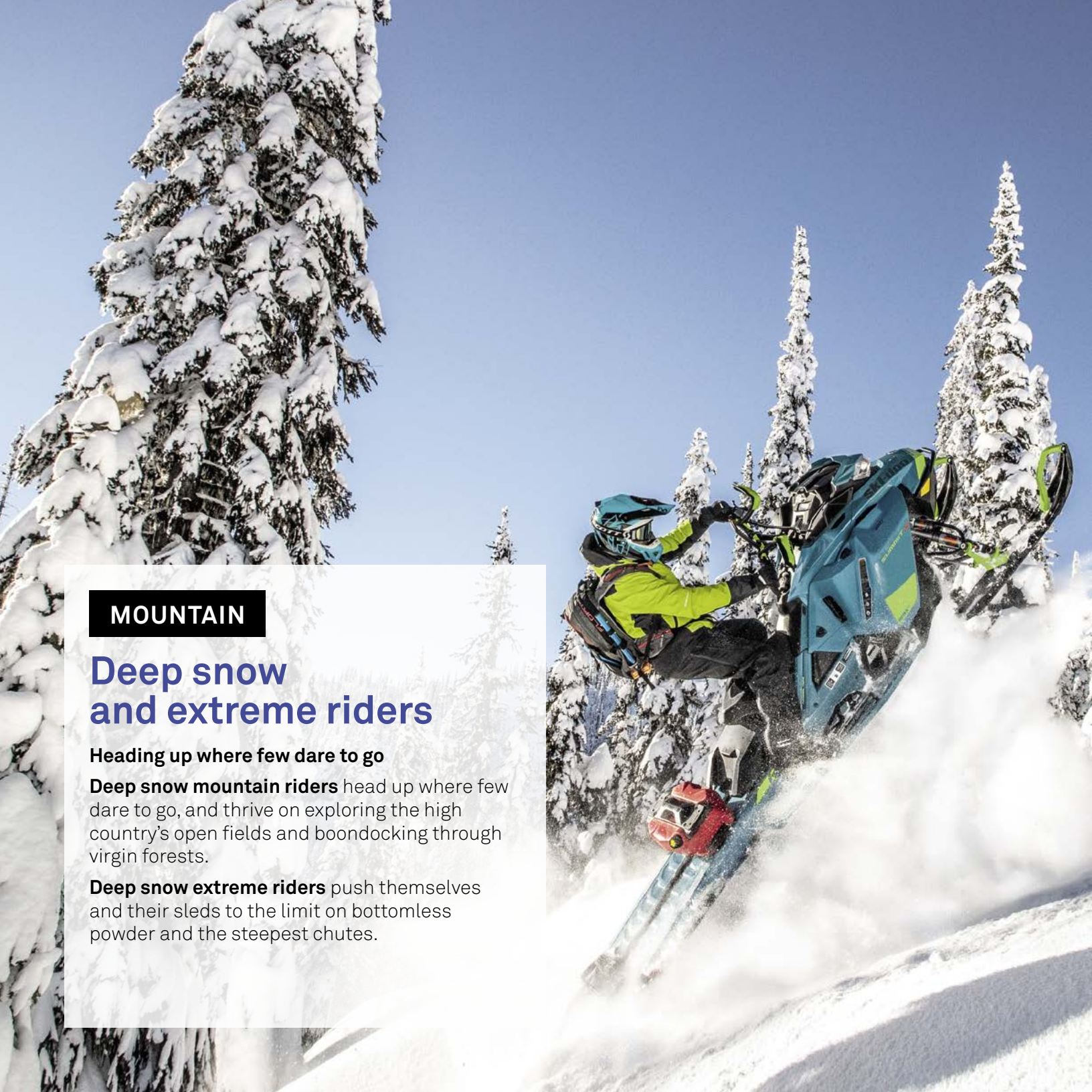
MODEL	DIMENSIONS	LUG HEIGHT	WEIGHT	DRIVE PITCH	CLIP CONFIG.
9264C	15" x 137" (38 cm x 348 cm)	1.6" (43 mm)	43 lb. (19.5 kg)	2.86" (73 mm)	Full ■
9282C	16" x 154" (41 cm x 391 cm)	1.6" (43 mm)	50 lb. (22.75 kg)	2.86" (73 mm)	Full ■

<sup>1</sup> These track models feature center hole for third driver.

MODEL	DIMENSIONS	LUG HEIGHT	WEIGHT	DRIVE PITCH	CLIP CONFIG.
9108C	15" x 136" (38 cm x 345 cm)	1.5" (38 mm)	41 lb. (18.5 kg)	2.52" (64 mm)	Full
9930C	15" x 121" (38 cm x 307 cm)	1.5" (38 mm)	39 lb. (17.75 kg)	2.52" (64 mm)	Full

MODEL	DIMENSIONS	LUG HEIGHT	WEIGHT	DRIVE PITCH	CLIP CONFIG.
9304C	15" x 120" (38 cm x 305 cm)	1.5" (38 mm)	37 lb. (16.8 kg)	2.86" (73 mm)	Full
9305C	15" x 129" (38 cm x 328 cm)	1.5" (38 mm)	39.5 lb. (17.9 kg)	2.86" (73 mm)	Full
9306C	15" x 137" (38 cm x 348 cm)	1.5" (38 mm)	42 lb. (19.1 kg)	2.86" (73 mm)	Full





## MOUNTAIN

### Deep snow and extreme riders

#### Heading up where few dare to go

**Deep snow mountain riders** head up where few dare to go, and thrive on exploring the high country's open fields and boondocking through virgin forests.

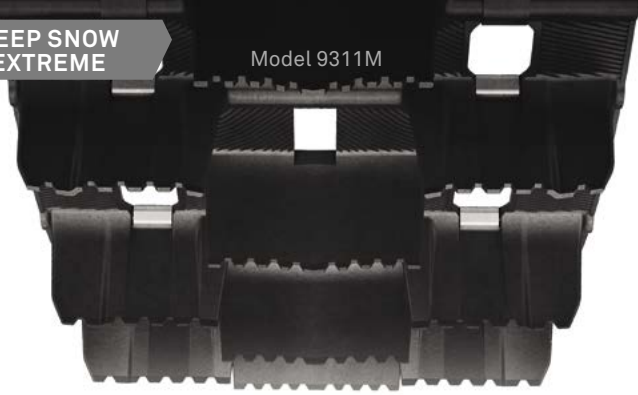
**Deep snow extreme riders** push themselves and their sleds to the limit on bottomless powder and the steepest chutes.

## WHICH MOUNTAIN TRACK IS RIGHT FOR YOU?

		LUG HEIGHT (in)									
		Challenger X3.2	Challenger X3	Epic 280	Conquer 280	Conquer 260	Challenger Extreme (Saw-tooth)	Challenger Extreme (Full cupped)	Peak 2.5	Challenger	Challenger
		3.2	3	2.8	2.8	2.6	2.5	2.5	2.5	2.313	2
RIDING STYLE	DEEP SNOW										
	DEEP SNOW EXTREME										

DEEP SNOW  
EXTREME

Model 9311M



CAMSO

## Challenger X3.2

Tallest lugs around

Built on the performance of the Challenger X3, the X3.2 features the tallest lugs on the market. With notched lug tips for improved performance, it's one of the most versatile mountain tracks on the market.

- Saw-tooth lug design for improved traction and control on packed snow
- 3" drive pitch and advanced molding technology
- Lug geometry and support columns allow lug cup and flex action for unmatched flotation

Model 9220M



CAMSO

## Challenger X3

Move through mountains

Our tallest lugs on the market. With 3" lugs, this deep snow technical track provides an efficient and light ride for mountain riders craving performance in extreme powder and while boondocking through trees.

- Single-ply construction, 3" drive pitch and advanced molding technology
- Lug geometry and support columns allow lug cup and flex action for unmatched flotation

DEEP SNOW  
EXTREME

Model 9407M

DEEP SNOW  
EXTREME

CAMSO

## Epic 280

Adventure extreme powder

The Camso Epic 280 sets a new standard in deep snow mountain riding with its unique deep cup-shaped lug design. Its balanced 6-pitch lug sequence provides more track speed in deep powder and excellent flotation on the most challenging conditions. Turn your mountain adventure into an Epic ride.

- Balanced track profile with a six-pitch lug sequence for optimized track speed, reduced vibration and improved handling in deep snow.
- Stiffer columns improve packed snow grip, riding agility and braking.
- Deeper cupped lugs drive snow into their centres, extracting traction, flotation and all-out deep snow performance.

MODEL	DIMENSIONS	LUG HEIGHT	WEIGHT	DRIVE PITCH	CLIP CONFIG.	MODEL	DIMENSIONS	LUG HEIGHT	WEIGHT	DRIVE PITCH	CLIP CONFIG.
9311M <sup>1</sup>	15" x 174" (38 cm x 442 cm)	3.2" (81 mm)	59 lb. (26.8 kg)	3" (76 mm)	Every 2 <sup>nd</sup> / open windows	9220M <sup>1</sup>	15" x 162" (38 cm x 412 cm)	3" (76 mm)	59 lb. (26.75 kg)	3" (76 mm)	Full
9319M <sup>1</sup>	15" x 162" (38 cm x 412 cm)	3.2" (81 mm)	54 lb. (24.5 kg)	3" (76 mm)	Every 2 <sup>nd</sup> / open windows	9309M	15" x 156" (38 cm x 396 cm)	3" (76 mm)	57 lb. (25.75 kg)	3" (76 mm)	Full
9320M <sup>1</sup>	15" x 156" (38 cm x 396 cm)	3.2" (81 mm)	52 lb. (23.6 kg)	3" (76 mm)	Every 2 <sup>nd</sup> / open windows						
9321M <sup>1</sup>	15" x 153" (38 cm x 389 cm)	3.2" (81 mm)	51 lb. (23.2 kg)	3" (76 mm)	Every 2 <sup>nd</sup> / open windows						

<sup>1</sup> These track models feature center hole for third driver.

MODEL	DIMENSIONS	LUG HEIGHT	WEIGHT	DRIVE PITCH	NB. STUDS	CLIP CONFIG.
9407M	15" x 162" (38 cm x 411 cm)	2.8" (71 mm)	47 lbs (21.4 kg)	3" (76 mm)	NA	Every 2 <sup>nd</sup> / open windows
9408M	15" x 156" (38 cm x 396 cm)	2.8" (71 mm)	45 lbs (20.5 kg)	3" (76 mm)	NA	Every 2 <sup>nd</sup> / open windows
9409M	15" x 153" (38 cm x 389 cm)	2.8" (71 mm)	44 lbs (20 kg)	3" (76 mm)	NA	Every 2 <sup>nd</sup> / open windows



DEEP SNOW  
EXTREME

Model 9337M

Model 9392M

DEEP SNOW

DEEP SNOW

Model 9105M

Model 9175M

DEEP SNOW

CAMSO

## Conquer 280

Above and beyond the deep stuff

Made to advance the mountain journey. The Conquer 280 offers a lighter mountain design track providing the ultimate in flotation, traction and performance. Its next generation lug geometry reaches new levels of balance in deep snow.

- Lightweight model increases available HP thanks to less rotating mass
- Lug design requires 20% less rider input on turns and 25% less throttle to hold on side hills
- 2.8" alternating single-angled lugs push performance in all-season riding conditions

CAMSO

## Conquer 260

Agility in deep snow

Designed with a softer rubber compound for better deep-snow performance, the Camso Conquer 260's 2.6-inch lug design powers through the deepest mountain snow with ease. This lightweight track increases your machine's available horsepower, requiring less throttle input in turns and on side hills.

- 2.6" alternating single-angled lugs push performance in all snow riding conditions
- Lightweight model increases available HP thanks to less rotating mass
- Lug design requires 20% less rider input on turns and 25% less throttle to hold on side hills

CAMSO

## Challenger Extreme Saw-tooth

Challenge the mountain in all snow types

Stems from the same design as the classic Challenger but adds even higher saw-tooth lugs that, while versatile, make boondocking bottomless powder and climbing the steepest chutes seem easy.

- Rigid proven design for all-around performance and durability
- Saw-tooth lug design feature for grip on trail and wind-blown snow
- Available in a full range of lengths up to 174" to fit all popular snowmobiles

CAMSO

## Challenger Extreme Full cupped

Challenge the mountain in powder snow

Stems from the same design as the classic Challenger but with full-cupped lugs that are especially efficient in powder snow and make boondocking in bottomless powder seem easy.

- Full-cupped and deep V lug design for soft powder snow flotation and traction
- 3" drive pitch available

MODEL	DIMENSIONS	LUG HEIGHT	WEIGHT	DRIVE PITCH	CLIP CONFIG.
9334M <sup>1</sup>	15" x 174" (38 cm x 442 cm)	2.8" (71 mm)	49 lb. (22.25 kg)	3" (76 mm)	Every 2 <sup>nd</sup> / open windows
9335M <sup>1</sup>	15" x 162" (38 cm x 411 cm)	2.8" (71 mm)	46 lb. (20.75 kg)	3" (76 mm)	Every 2 <sup>nd</sup> / open windows
9336M <sup>1</sup>	15" x 156" (38 cm x 396 cm)	2.8" (71 mm)	44 lb. (20 kg)	3" (76 mm)	Every 2 <sup>nd</sup> / open windows
9337M <sup>1</sup>	15" x 153" (38 cm x 389 cm)	2.8" (71 mm)	43 lb. (19.5 kg)	3" (76 mm)	Every 2 <sup>nd</sup> / open windows
9340M <sup>1</sup>	15" x 165" (38 cm x 419 cm)	2.8" (71 mm)	45 lb. (20.5 kg)	3.5" (89 mm)	Every 2 <sup>nd</sup> / open windows
9341M <sup>1</sup>	15" x 154" (38 cm x 391 cm)	2.8" (71 mm)	42 lb. (19 kg)	3.5" (89 mm)	Every 2 <sup>nd</sup> / open windows
9360M <sup>1</sup>	15" x 175" (38 cm x 444 cm)	2.8" (71 mm)	50 lb. (22.75 kg)	3.5" (89 mm)	Every 2 <sup>nd</sup> / open windows

MODEL	DIMENSIONS	LUG HEIGHT	WEIGHT	DRIVE PITCH	CLIP CONFIG.
9392M	15" x 154" (38 cm x 391 cm)	2.6" (66 mm)	40 lb. (18.25 kg)	3.5" (89 mm)	Every 2 <sup>nd</sup> / open windows
9393M	15" x 165" (38 cm x 419 cm)	2.6" (66 mm)	43 lb. (19.5 kg)	3.5" (89 mm)	Every 2 <sup>nd</sup> / open windows

<sup>1</sup> These track models feature center hole for third driver.

Saw-tooth lug design for versatility in all snow types					
MODEL	DIMENSIONS	LUG HEIGHT	WEIGHT	DRIVE PITCH	CLIP CONFIG.
9035M	15" x 174" (38 cm x 442 cm)	2.5" (64 mm)	63 lb. (28.5 kg)	3" (76 mm)	Full
9036M	16" x 174" (41 cm x 442 cm)	2.5" (64 mm)	69 lb. (31.25 kg)	3" (76 mm)	Full
9102M	16" x 154" (41 cm x 391 cm)	2.5" (64 mm)	59 lb. (26.75 kg)	2.86" (73 mm)	Full
9104M <sup>1</sup>	15" x 154" (38 cm x 391 cm)	2.5" (64 mm)	57 lb. (25.75 kg)	2.86" (73 mm)	Full
9105M <sup>1</sup>	15" x 163" (38 cm x 414 cm)	2.5" (64 mm)	59 lb. (26 kg)	2.86" (73 mm)	Full
9115M	16" x 174" (41 cm x 442 cm)	3" (76 mm)	72 lb. (32.75 kg)	3" (76 mm)	Full
9144M	16" x 146" (41 cm x 371 cm)	2.5" (64 mm)	56 lb. (25.5 kg)	2.86" (73 mm)	Full
9145M <sup>1</sup>	15" x 146" (38 cm x 371 cm)	2.5" (64 mm)	52 lb. (23.5 kg)	2.86" (73 mm)	Full

Full cupped lug design for powder snow types					
MODEL	DIMENSIONS	LUG HEIGHT	WEIGHT	DRIVE PITCH	CLIP CONFIG.
9174M	15" x 153" (38 cm x 389 cm)	2.5" (64 mm)	57 lb. (25.75 kg)	3" (76 mm)	Full
9175M	15" x 162" (38 cm x 412 cm)	2.5" (64 mm)	55 lb. (25 kg)	3" (76 mm)	Full
9176M	16" x 162" (41 cm x 412 cm)	2.5" (64 mm)	57 lb. (25.75 kg)	3" (76 mm)	Full
9329M	15" x 141" (38 cm x 382 cm)	2.5" (64 mm)	47 lb. (21.3 kg)	3" (76 mm)	Full

<sup>1</sup> These track models feature center hole for third driver.



## CAMSO

## Peak 2.5

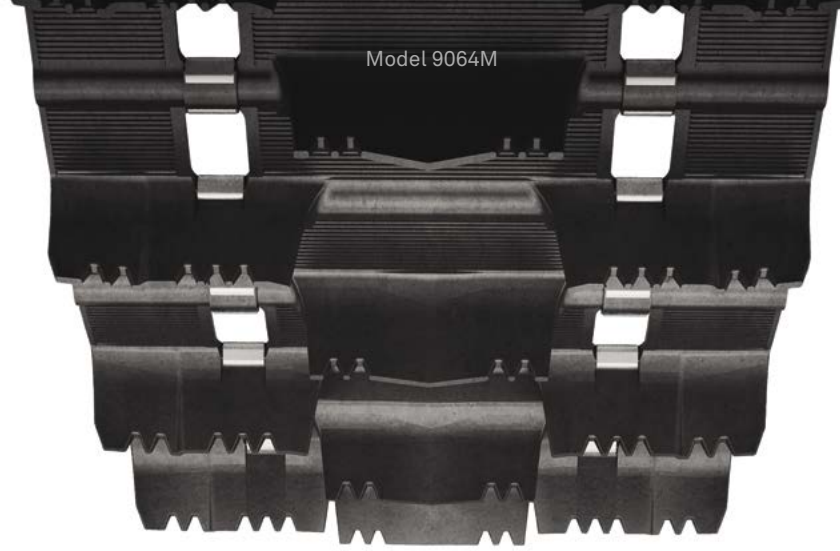
Traction for a variety of applications

Performs across a wide variety of snow conditions with 2.5" angular lugs. Funnels snow under your snowmobile for extra traction and outstanding flotation.

- Angular lugs bite big and funnel snow under snowmobile for outstanding flotation
- Available with soft lugs for powder snow and hard lugs for heavy/wet snow
- Outer lug bars deliver better lateral control for improved handling

MODEL	DIMENSIONS	LUG HEIGHT	WEIGHT	DRIVE PITCH	CLIP CONFIG.
9179M	16" x 146" (41 cm x 371 cm)	2.5" (64 mm)	56 lb. (25.5 kg)	2.86" (73 mm)	Full ■
9182M <sup>1</sup>	15" x 146" (38 cm x 371 cm)	2.5" (64 mm)	55 lb. (25 kg)	2.86" (73 mm)	Full ■
9230M <sup>1</sup>	15" x 154" (38 cm x 392 cm)	2.5" (64 mm)	56 lb. (25.5 kg)	2.86" (73 mm)	Full ■
9231M <sup>1</sup>	15" x 163" (38 cm x 414 cm)	2.5" (64 mm)	59 lb. (26.75 kg)	2.86" (73 mm)	Full ■
9232M	16" x 154" (41 cm x 392 cm)	2.5" (64 mm)	60 lb. (27.25 kg)	2.86" (73 mm)	Full ■
9233M	16" x 163" (41 cm x 414 cm)	2.5" (64 mm)	64 lb. (29 kg)	2.86" (73 mm)	Full ■

<sup>1</sup> These track models feature center hole for third driver.



## CAMSO

## Challenger

Ride through deep snow

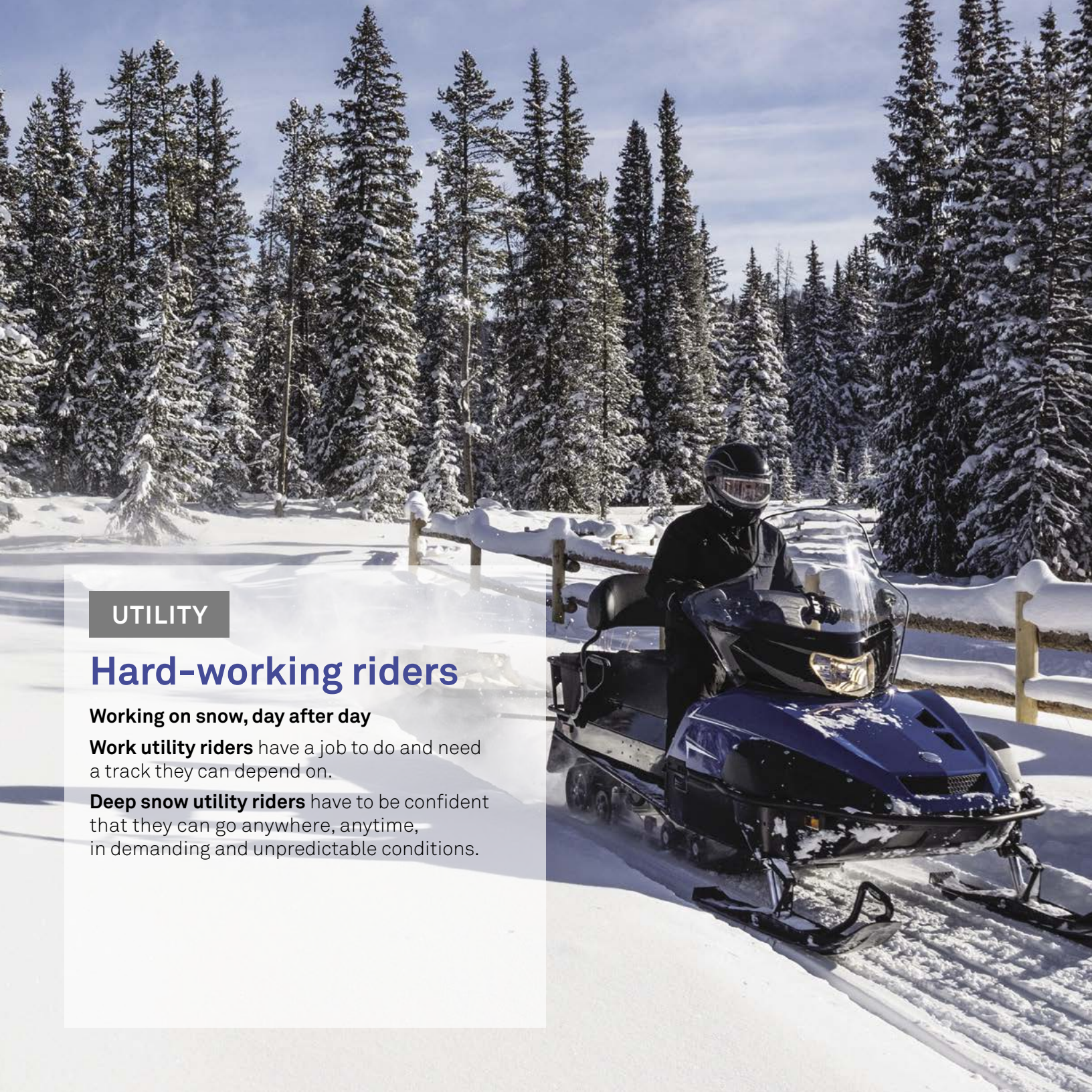
A standard for deep lug tracks. Deep snow riding has never been so versatile and reliable. Delivers outstanding all-around performance in a wide range of mountain-riding conditions.

- 2" and 2.313" lugs heights for traction in deep snow
- Saw-tooth design provides versatility with grip and control on hard snow
- 15" and 16" track width available

MODEL	DIMENSIONS	LUG HEIGHT	WEIGHT	DRIVE PITCH	CLIP CONFIG.
9064M	16" x 146" (41 cm x 371 cm)	2.313" (59 mm)	53 lb. (24 kg)	2.86" (73 mm)	Full ■
9065M	16" x 154" (41 cm x 391 cm)	2.313" (59 mm)	55 lb. (25 kg)	2.86" (73 mm)	Full ■
9088M <sup>1</sup>	15" x 154" (38 cm x 391 cm)	2" (51 mm)	55 lb. (25 kg)	2.86" (73 mm)	Full ■
9186M	16" x 137" (41 cm x 348 cm)	2" (51 mm)	49 lb. (22.25 kg)	2.86" (73 mm)	Full ■
9187M	16" x 146" (41 cm x 371 cm)	2" (51 mm)	51 lb. (23 kg)	2.86" (73 mm)	Full ■
9188M	16" x 154" (41 cm x 391 cm)	2" (51 mm)	53 lb. (24 kg)	2.86" (73 mm)	Full ■
9204M	16" x 137" (41 cm x 348 cm)	2.313" (59 mm)	51 lb. (23 kg)	2.86" (73 mm)	Full ■
9797M	15" x 136" (38 cm x 345 cm)	2" (51 mm)	51 lb. (23 kg)	2.52" (64 mm)	Full ■
9875M	15" x 144" (38 cm x 366 cm)	2" (51 mm)	53 lb. (24 kg)	2.52" (64 mm)	Full ■
9876M	15" x 151" (38 cm x 383 cm)	2" (51 mm)	55 lb. (25 kg)	2.52" (64 mm)	Full ■

<sup>1</sup> These track models feature center hole for third driver.





UTILITY

## Hard-working riders

Working on snow, day after day

**Work utility riders** have a job to do and need a track they can depend on.

**Deep snow utility riders** have to be confident that they can go anywhere, anytime, in demanding and unpredictable conditions.

## WHICH UTILITY TRACK IS RIGHT FOR YOU?

		LUG HEIGHT (in)							
		Cobra WT	Cobra SWT	Cobra SWT	ICE Cobra WT 150	Cobra WT	RipSaw Full	RipSaw Full	ICE Wide Track
		1.8	1.75	1.5	1.5	1.5	1.375	1.25	1.25
RIDING STYLE	DEEP SNOW UTILITY								
	WORK UTILITY								



DEEP SNOW UTILITY

Model 9195U

DEEP SNOW UTILITY

Model 9260U

DEEP SNOW UTILITY

Model 9388C

## CAMSO Cobra WT

High-performance belting to handle heavier loads

Wide-track design for performance with traction to spare in deep, soft or loose snow. Ideal for utility snowmobiles used off-trail with high-performance belting to handle heavier loads without track stretching.

- Extra-high 1.5" and 1.8" lugs for the best possible traction
- Cupped lug design ideal in soft, loose snow and for off-trail backcountry exploration
- Lightweight for greater efficiency and improved fuel economy

## CAMSO Cobra SWT

Durable, high-performance design for wide sleds

The same durable, high-performance design as the Cobra WT, with even wider track for 24" wide applications. For utility users with wide sleds who seek quality.

- Extra tall 1.5" and 1.75" lugs provide optimal traction (1.8" lugs for Cobra WT)
- Cupped lug design ideal in soft, loose snow and for off-trail backcountry exploration
- Lightweight for greater efficiency and improved fuel economy

## CAMSO ICE Cobra WT 150

Traction on icy conditions

Based on the high-performance Cobra WT 1.5, the Camso ICE Cobra WT 150 comes with a factory pre-studded design for superior grip in icy conditions. Featuring thinner paddles, it reduces weight while improving traction in soft snow. A lightweight deep snow utility track that's always up to the job.

- Factory pre-studded for improved traction and control on ice conditions
- Camso's unique 1.5" cupped-lug design for exceptional performance off-trail
- Aggressive side profile to increase traction on hard-packed snow

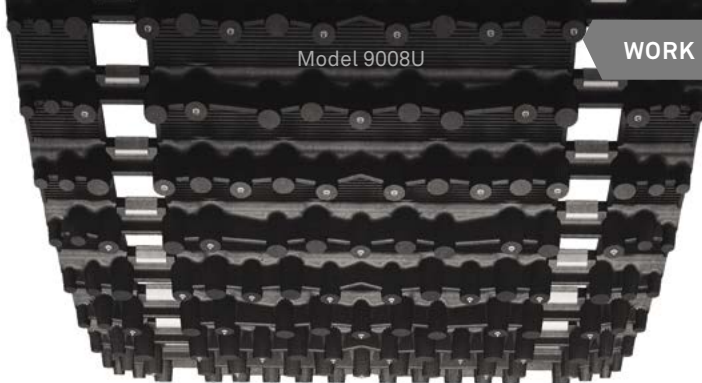
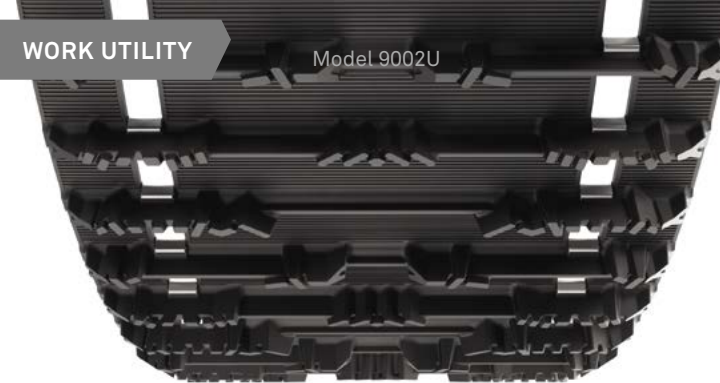
MODEL	DIMENSIONS	LUG HEIGHT	WEIGHT	DRIVE PITCH	CLIP CONFIG.	MODEL	DIMENSIONS	LUG HEIGHT	WEIGHT	DRIVE PITCH	CLIP CONFIG.
9195U	20" x 154" (50 cm x 392 cm)	1.8" (46 mm)	65 lb. (29.5 kg)	2.86" (73 mm)	Full ■	9260U	24" x 156" (60 cm x 396 cm)	1.75" (44 mm)	82 lb. (37.25 kg)	2.52" (64 mm)	Full ■
9196U	20" x 154" (50 cm x 392 cm)	1.5" (38 mm)	62 lb. (28.25 kg)	2.86" (73 mm)	Full ■	9261U	24" x 156" (60 cm x 396 cm)	1.5" (38 mm)	80 lb. (36.25 kg)	2.52" (64 mm)	Full ■
9322U <sup>1</sup>	20" x 154" (50 cm x 392 cm)	1.5" (38 mm)	62 lb. (28.25 kg)	2.86" (73 mm)	Full ■	9422U	24" x 154" (60 cm x 392 cm)	1.5" (38 mm)	80 lb. (36.25 kg)	2.86" (73 mm)	Full ▲ ■ <b>NEW</b>

<sup>1</sup> Features four rows drive lugs for improved fitment on select snowmobiles.

MODEL	DIMENSIONS	LUG HEIGHT	WEIGHT	DRIVE PITCH	NB. STUDS	CLIP CONFIG.
9366U	20" x 154" (50cm x 392 cm)	1.5" (38 mm)	61 lb (27.5 kg)	2.86" (73 mm)	198	Full ■
9414U <sup>1</sup>	20" x 154" (50cm x 392 cm)	1.5" (38 mm)	61 lb (27.5 kg)	2.86" (73 mm)	198	Full ■

<sup>1</sup> Features four rows drive lugs for improved fitment on select snowmobiles.





## CAMSO RipSaw Full

Mile after mile of dependable use

A modified version of the tried-and-tested RipSaw design. Ideal for utility use, it features a full lug design and its 1.25" lug height is a popular upgrade for utility vehicles fitted with 1" lug tracks.

- 1.25" and 1.375" lug heights
- Full block lugs provide traction in soft, loose snow
- Angled lugs for aggressive forward and lateral bite on hard-packed snow

## CAMSO ICE WideTrack

Heavy-duty utility traction

Utility sleds need unbeatable flotation and superb reliability to handle the toughest jobs. Featuring extra lateral stability and traction, this track is the only model in the category with a factory pre-studded design for utility snowmobiles using a 20" wide track.

- Finger lug design for superior traction on hard-pack snow
- 1.25" lug height

MODEL	DIMENSIONS	LUG HEIGHT	WEIGHT	DRIVE PITCH	CLIP CONFIG.	MODEL	DIMENSIONS	LUG HEIGHT	WEIGHT	DRIVE PITCH	NB. STUDS	CLIP CONFIG.
9002U	20" x 156" (50 cm x 396 cm)	1.25" (32 mm)	66 lb. (30 kg)	2.52" (64 mm)	Full	9008U	20" x 156" (50 cm x 396 cm)	1.25" (32 mm)	71 lb. (32.25 kg)	2.52" (64 mm)	341	Full
9089U	20" x 154" (50 cm x 391 cm)	1.375" (35 mm)	65 lb. (29.5 kg)	2.86" (73 mm)	Full							
9151U <sup>1</sup>	20" x 156" (50 cm x 396 cm)	1.25" (32 mm)	66 lb. (30 kg)	2.52" (64 mm)	Full							

<sup>1</sup> Features eight rows of internal drive lugs for improved track drive.

## RACING

### Riding to win

The speed you need to compete with the best

If you're an **asphalt, ice and grass drag, snocross, ice oval or snow and hill drag racer**, you need tracks that are optimized for racing on competitive courses. When the crowd roars, you know that adrenaline isn't enough to get you across the finish line first.

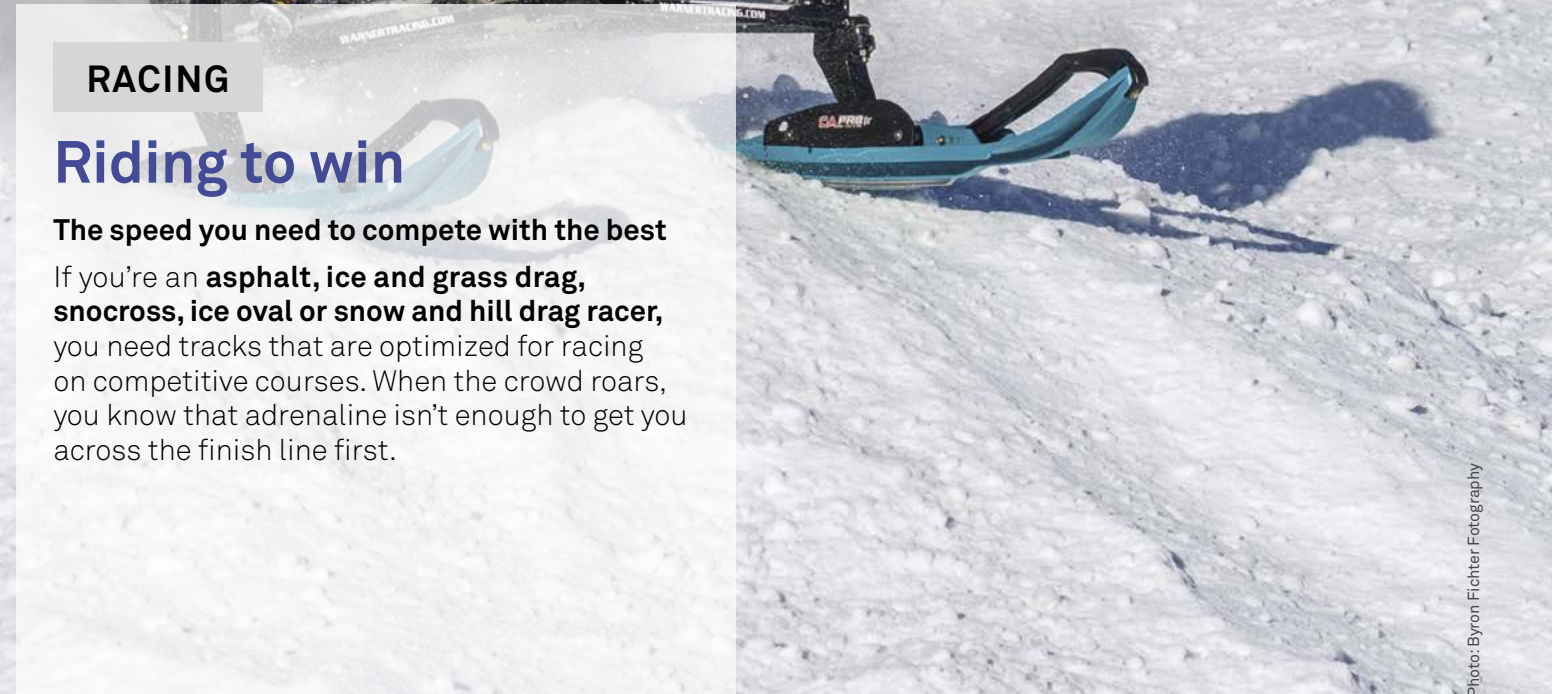
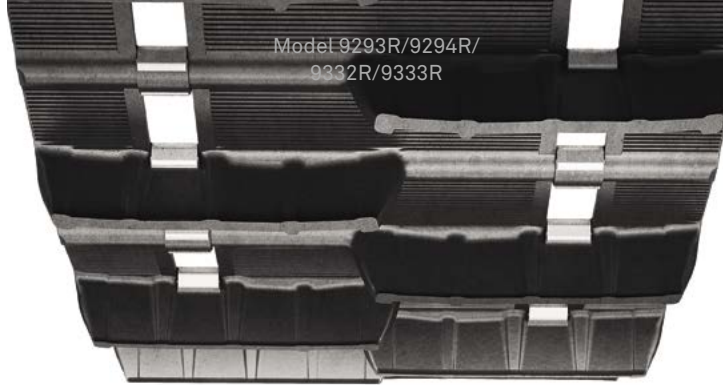


Photo: Byron Fichter Photography





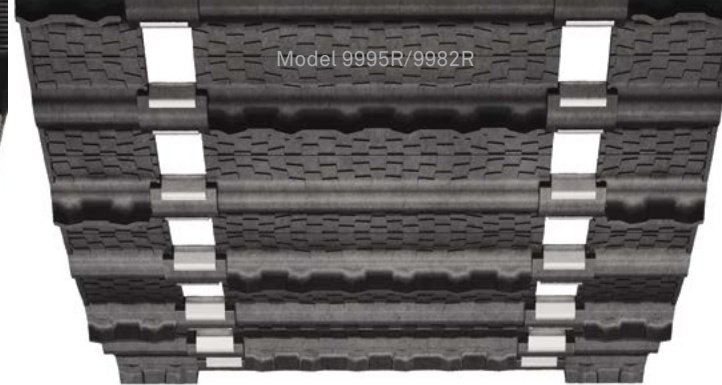
## CAMSO

## Sno X

A whole lot of holeshot

High-performance designs, custom-tailored for snocross competition and tested and proven by professional race teams. Firm lugs and specialty rubber compounds provide the best holeshots, keeping you ahead of the pack.

- 1.75" lugs, the choice of professional racers
- Calculated lug stiffness for best holeshot
- ISR approved for use in mod class



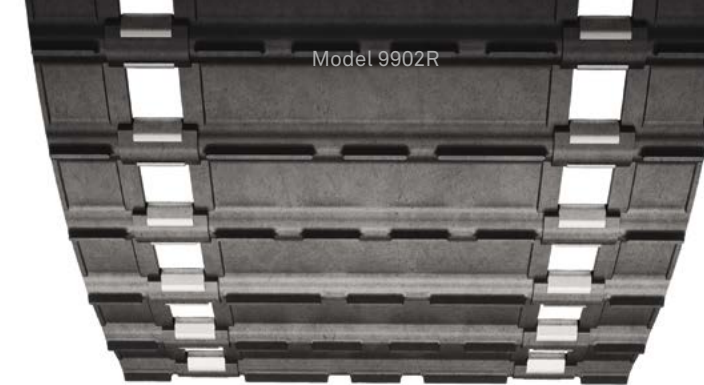
## CAMSO

## Ice Oval Series

The oval racing champion

High-performance design engineered for the extreme cornering and acceleration of oval racing. A favorite among racers, it delivers the performance required from throttle to ice.

- Lightest in class for best efficiency and power transfer
- "Soft" outer rubber compound maximizes traction on ice
- Multiple lug heights for all snow and ice conditions



## CAMSO

## Ice and Grass Drag

Ahead of the pack

Designed specifically for the intense acceleration of drag racing, where the first seconds of the race make the difference between winning and losing.

- Low-resistance 0.525" lugs require less fuel for optimal straight-line acceleration
- 13.5" width available for lightweight and maximum top speed
- Multiple lengths for a wide variety of race chassis



## CAMSO

## Asphalt Drag

Made for asphalt drag competitions

Engineered and built for the unique performance requirements of asphalt drag competitions, where traction and super-fast acceleration are the name of the game.

- Lightweight 10.625" width for maximum top speed
- Soft outer rubber provides traction on paved surfaces
- Multiple lengths for a wide variety of race chassis

MODEL	DIMENSIONS	LUG HEIGHT	WEIGHT	DRIVE PITCH	CLIP CONFIG.	MODEL	DIMENSIONS	LUG HEIGHT	WEIGHT	DRIVE PITCH	CLIP CONFIG.
9067R <sup>1</sup>	15" x 121" (38 cm x 307 cm)	1.75" (44 mm)	41 lb. (18.5 kg)	2.52" (64 mm)	Full	9194R <sup>1</sup>	14" x 128" (36 cm x 325 cm)	1" (25 mm)	32 lb. (14.5 kg)	2.52" (64 mm)	Full
9206R <sup>1</sup>	15" x 144" (38 cm x 366 cm)	1.75" (44 mm)	48 lb. (21.75 kg)	2.52" (64 mm)	Full	9239R <sup>1</sup>	14" x 121" (36 cm x 307 cm)	1" (25 mm)	32 lb. (14.5 kg)	2.52" (64 mm)	Full
9293R	15" x 120" (38 cm x 305 cm)	1.75" (44 mm)	37 lb. (16.75 kg)	2.86" (73 mm)	Full	9812R <sup>2</sup>	15" x 121" (38 cm x 307 cm)	0.525" (13 mm)	33 lb. (15 kg)	2.52" (64 mm)	Full
9294R	15" x 129" (38 cm x 326 cm)	1.75" (44 mm)	40 lb. (18.25 kg)	2.86" (73 mm)	Full	9982R	13.5" x 116" (34 cm x 295 cm)	0.725" (18 mm)	28 lb. (12.75 kg)	2.52" (64 mm)	Full
9332R	15" x 137" (38 cm x 348 cm)	1.75" (44 mm)	44 lb. (20 kg)	2.86" (73 mm)	Full	9995R	15" x 116" (38 cm x 295 cm)	0.725" (18 mm)	31 lb. (14 kg)	2.52" (64 mm)	Full
9333R	15" x 146" (38 cm x 371 cm)	1.75" (44 mm)	45 lb. (20.5 kg)	2.86" (73 mm)	Full	9997R <sup>2</sup>	15" x 121" (38 cm x 307 cm)	0.725" (18 mm)	36 lb. (16.25 kg)	2.52" (64 mm)	Full
9382R	10" x 93" (25.4 cm x 236 cm)	0.5" (13 mm)	16 lb. (7.5 kg)	2.59" (66 mm)	Full						

<sup>1</sup> HackSaw design see p. 15

<sup>2</sup> See website for specific design

<sup>1</sup> Backcountry design see p. 21

MODEL	DIMENSIONS	LUG HEIGHT	WEIGHT	DRIVE PITCH	CLIP CONFIG.	MODEL	DIMENSIONS	LUG HEIGHT	WEIGHT	DRIVE PITCH	CLIP CONFIG.
9084R	13.5" x 144" (34 cm x 366 cm)	0.525" (13 mm)	35 lb. (15.75 kg)	2.52" (64 mm)	Full	9895R	10.625" x 121" (27 cm x 307 cm)	0.625" (16 mm)	33 lb. (15 kg)	2.52" (64 mm)	No windows / clips
9359R	14" x 144" (36 cm x 366 cm)	1" (25 mm)	38 lb. (17.25 kg)	2.52" (64 mm)	Full	9896R	10.625" x 128" (27 cm x 325 cm)	0.625" (16 mm)	35 lb. (15.75 kg)	2.52" (64 mm)	No windows / clips
9811R	15" x 121" (38 cm x 307 cm)	0.525" (13 mm)	33 lb. (15 kg)	2.52" (64 mm)	Full	9897R	10.625" x 136" (27 cm x 345 cm)	0.625" (16 mm)	37 lb. (16.75 kg)	2.52" (64 mm)	No windows / clips
9902R	13.5" x 128" (34 cm x 325 cm)	0.525" (13 mm)	33 lb. (15 kg)	2.52" (64 mm)	Full						
9929R	13.5" x 136" (34 cm x 345 cm)	0.525" (13 mm)	31 lb. (14 kg)	2.52" (64 mm)	No windows / clips						
9976R	13.5" x 144" (34 cm x 366 cm)	0.525" (13 mm)	33 lb. (15 kg)	2.52" (64 mm)	No windows / clips						



# THE 4 KEYS TO TRACK SELECTION

## Length

Is the inside circumference of the track and is calculated as the drive pitch multiplied by the number of track segments. It must be correct to the nearest inch for proper fit without additional modifications to the skid frame.\*

How to measure your track length?

Drive pitch x Nbr of track segment = length				
Ex.:	2.52"	x	48	= 120.96" (track length: 121")
	2.86"		48	= 137.28" (track length: 137")

## Width

Is the measurement across the track and is governed by the width of the tunnel.

- A slightly narrower track is permissible, like a 15" track in place of a 16" track, but not necessarily the other way around

## Drive Pitch\*\*

Is the drive cog center distance around the circumference of the cogs on the drive axle. It must match the existing track or the drive cogs must be changed.

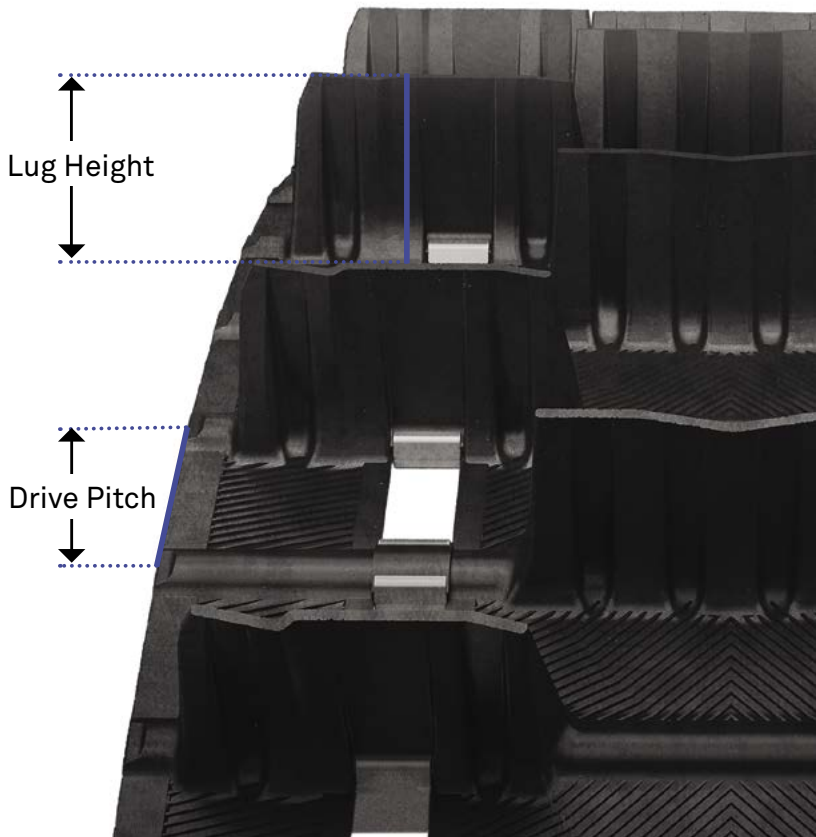
- 2.52" primarily machines manufactured before 2007
- 2.86" especially on recent models manufactured after 2007
- 3" and new 3.5" drive pitch for lowest weight on select mountain sleds

## Lug Height\*\*\*

Is the distance the lugs extend above the track surface.

- 1" - <1.5" – trail
- 1.5" - <2" – on/off trail
- 2" and greater – deep snow

\* Aftermarket parts are available for mods when needed  
 \*\* Some other drive pitches are also found on older models  
 \*\*\* Check for adequate clearance before going to a taller lug track



# SPECIFICATIONS

LENGTH	LUG HEIGHT	STUD.	CATEGORY	TRACK DESIGN	MODEL #	REF.
93"	0.500"		RACING	Youth Racer	9382R	38
114"	0.530"		TRAIL	DuraSport 530	9755T	-
114"	0.530"		TRAIL	DuraSport 530	9756T	-
116"	0.725"		TRAIL	DuraSport 725	9796T	-
116"	0.725"		RACING	Ice Oval Series	9982R	38
116"	0.725"		RACING	Ice Oval Series	9995R	38
120"	1.000"		TRAIL	RipSaw	9148H	12
120"	1.220"	▲	TRAIL	ICE Attak XT	9190H	13
120"	1.250"		TRAIL	RipSaw	9149H	12
120"	1.250"	▲	TRAIL	ICE Ripper XT	9164H	13
120"	1.250"		TRAIL	RipSaw II	9209H	12
120"	1.352"		TRAIL	Cobra	9284H	11
120"	1.500"		TRAIL	Storm 150	9368H	10
120"	1.500"	▲	TRAIL	ICE Storm 150	9388H	10
120"	1.500"		CROSS-COUNTRY	RipSaw II 1.5	9304C	23
120"	1.600"	▲	CROSS-COUNTRY	ICE Cobra 1.6	9244C	22
120"	1.750"		CROSS-COUNTRY	Hurricane 175	9400C	18
120"	1.750"		RACING	Sno X	9293R	38
120"	1.750"		CROSS-COUNTRY	BackCountry X	9287C	21
120"	2.000"		CROSS-COUNTRY	BackCountry X2	9256C	19
121"	0.525"		RACING	Ice/Grass Drag	9811R	39
121"	0.525"		RACING	Ice Oval Series	9812R	38
121"	0.625"		RACING	Asphalt Drag	9895R	39
121"	0.725"		RACING	Ice Oval Series	9997R	38
121"	0.725"		TRAIL	DuraSport 725	9791T	-
121"	1.000"		RACING	HackSaw	9239R	38
121"	1.000"		TRAIL	HackSaw	9043H	-
121"	1.000"		TRAIL	HackSaw	9043H144	15
121"	1.000"		TRAIL	Carve	9837H	-
121"	1.063"	▲	TRAIL	ICE Attak	9028H	14
121"	1.220"	▲	TRAIL	ICE Attak XT	9200H	13
121"	1.250"	▲	TRAIL	ICE Ripper XT	9077H	13
121"	1.250"		TRAIL	RipSaw	9968H	12
121"	1.250"		TRAIL	RipSaw	9968H144	12

LENGTH	LUG HEIGHT	STUD.	CATEGORY	TRACK DESIGN	MODEL #	REF.
121"	1.250"		TRAIL	RipSaw II	9214H	12
121"	1.352"		TRAIL	Cobra	9052H	11
121"	1.500"		CROSS-COUNTRY	FreeRide	9033C	-
121"	1.500"		CROSS-COUNTRY	Intense	9930C	23
121"	1.500"		CROSS-COUNTRY	RipSaw 1.5	9112C	-
121"	1.600"	▲	CROSS-COUNTRY	ICE Cobra 1.6	9312C	22
121"	1.750"		CROSS-COUNTRY	BackCountry	9140C	21
121"	1.750"		RACING	BackCountry	9067R	38
128"	0.525"		RACING	Ice/Grass Drag	9902R	39
128"	0.625"		RACING	Asphalt Drag	9896R	39
128"	1.000"		RACING	HackSaw	9194R	38
128"	1.000"		TRAIL	HackSaw	9110H	15
128"	1.000"		TRAIL	HackSaw	9234H	15
128"	1.220"	▲	TRAIL	ICE Attak XT	9201H	13
128"	1.250"		TRAIL	RipSaw	9001H	12
128"	1.250"		TRAIL	RipSaw	9040H	12
128"	1.250"		TRAIL	RipSaw II	9215H	12
128"	1.600"	▲	CROSS-COUNTRY	ICE Cobra 1.6	9313C	23
128"	1.750"		CROSS-COUNTRY	BackCountry	9141C	21
129"	1.000"		TRAIL	RipSaw II	9325H	12
129"	1.220"	▲	TRAIL	ICE Attak XT	9236H	13
129"	1.250"		RACING	RipSaw	9358R	-
129"	1.250"		TRAIL	RipSaw II	9237H	12
129"	1.352"		TRAIL	Cobra	9235H	11
129"	1.500"		TRAIL	Storm 150	9369H	10
129"	1.500"	▲	TRAIL	ICE Storm 150	9389H	10
129"	1.500"		CROSS-COUNTRY	RipSaw II 1.5	9305C	23
129"	1.600"	▲	CROSS-COUNTRY	ICE Cobra 1.6	9245C	22
129"	1.750"		CROSS-COUNTRY	Hurricane 175	9401C	18
129"	1.750"		RACING	Sno X	9294R	38
129"	1.750"		CROSS-COUNTRY	BackCountry X	9288C	21
129"	2.000"		CROSS-COUNTRY	BackCountry X2	9257C	19

# SPECIFICATIONS

LENGTH	LUG HEIGHT	STUD.	CATEGORY	TRACK DESIGN	MODEL #	REF.
136"	0.525"		RACING	Ice/Grass Drag	9929R	39
136"	0.625"		RACING	Asphalt Drag	9897R	39
136"	0.725"		TRAIL	DuraSport 725	9783T	-
136"	1.000"		TRAIL	Energy	9794T	-
136"	1.000"		TRAIL	HackSaw	9010H	15
136"	1.063"	▲	TRAIL	ICE Attak	9029H	14
136"	1.220"	▲	TRAIL	ICE Attak XT	9202H	13
136"	1.250"		TRAIL	RipSaw	9969H	12
136"	1.250"		TRAIL	RipSaw II	9216H	12
136"	1.352"		TRAIL	Cobra	9061H	11
136"	1.500"		CROSS-COUNTRY	Intense	9108C	23
136"	1.600"	▲	CROSS-COUNTRY	ICE Cobra 1.6	9314C	22
136"	1.750"		CROSS-COUNTRY	BackCountry	9142C	21
136"	2.000"		MOUNTAIN	Challenger	9797M	31
137"	1.000"		TRAIL	RipSaw II	9224H	12
137"	1.220"	▲	TRAIL	ICE Attak XT	9191H	13
137"	1.250"		TRAIL	RipSaw II	9223H	12
137"	1.352"		TRAIL	Cobra	9307H	11
137"	1.500"		TRAIL	Storm 150	9370H	10
137"	1.500"	▲	TRAIL	ICE Storm 150	9390H	10
137"	1.500"		CROSS-COUNTRY	RipSaw II 1.5	9306C	23
137"	1.600"	▲	CROSS-COUNTRY	ICE Cobra 1.6	9246C	22
137"	1.600"		CROSS-COUNTRY	Cobra 1.6	9264C	22
137"	1.600"	▲	CROSS-COUNTRY	ICE Cobra 1.6	9249C	22
137"	1.750"		CROSS-COUNTRY	Hurricane 175	9402C	19
137"	1.750"		CROSS-COUNTRY	Challenger Trail	9070C	20
137"	1.750"		CROSS-COUNTRY	BackCountry X	9289C	21
137"	1.750"		RACING	Sno X	9332R	38
137"	2.000"		CROSS-COUNTRY	BackCountry X2	9258C	19
137"	2.000"		MOUNTAIN	Challenger	9186M	31
137"	2.313"		MOUNTAIN	Challenger	9204M	31
139"	0.725"		UTILITY	Explore 725	9011U	-

LENGTH	LUG HEIGHT	STUD.	CATEGORY	TRACK DESIGN	MODEL #	REF.
141"	1.750"		CROSS-COUNTRY	BackCountry X	9254C	21
141"	2.500"		MOUNTAIN	Challenger Extreme	9329M	29
144"	0.525"		RACING	Ice/Grass Drag	9976R	39
144"	0.525"		RACING	Ice/Grass Drag	9084R	39
144"	1.000"		RACING	HackSaw	9359R	39
144"	1.220"	▲	TRAIL	ICE Attak XT	9203H	13
144"	1.250"		TRAIL	RipSaw	9006H	12
144"	1.352"		TRAIL	Cobra	9107H	11
144"	1.500"		CROSS-COUNTRY	CrossOver	9003C	-
144"	1.600"	▲	CROSS-COUNTRY	ICE Cobra 1.6	9315C	22
144"	1.750"		RACING	BackCountry	9206R	38
144"	1.750"		CROSS-COUNTRY	BackCountry	9143C	21
144"	2.000"		MOUNTAIN	Challenger	9875M	31
146"	1.220"	▲	TRAIL	ICE Attak XT	9192H	13
146"	1.352"		TRAIL	Cobra	9120H	11
146"	1.500"		TRAIL	Storm 150	9371H	10
146"	1.500"	▲	TRAIL	ICE Storm 150	9391H	10
146"	1.600"	▲	CROSS-COUNTRY	ICE Cobra 1.6	9247C	22
146"	1.600"	▲	CROSS-COUNTRY	ICE Cobra 1.6	9250C	22
146"	1.750"		CROSS-COUNTRY	Hurricane 175	9403C	18
146"	1.750"		CROSS-COUNTRY	Challenger Trail	9167C	20
146"	1.750"		RACING	Sno X	9333R	38
146"	2.000"		MOUNTAIN	Challenger	9187M	31
146"	2.000"		CROSS-COUNTRY	BackCountry X2	9417C	19
146"	2.313"		MOUNTAIN	Challenger	9064M	31
146"	2.500"		MOUNTAIN	Challenger Extreme	9145M	29
146"	2.500"		MOUNTAIN	Peak 2.5	9182M	30
146"	2.500"		MOUNTAIN	Challenger Extreme	9144M	29
146"	2.500"		MOUNTAIN	Peak 2.5	9179M	39
151"	1.250"		TRAIL	RipSaw	9007H	12
151"	1.500"		CROSS-COUNTRY	CrossOver	9004C	-
151"	2.000"		MOUNTAIN	Challenger	9876M	31
153"	1.750"		CROSS-COUNTRY	BackCountry X	9328C	21

# SPECIFICATIONS

LENGTH	LUG HEIGHT	STUD.	CATEGORY	TRACK DESIGN	MODEL #	REF.
153"	2.500"		MOUNTAIN	Challenger Extreme	9174M	29
153"	2.800"		MOUNTAIN	Conquer 280	9337M	28
153"	2.800"		MOUNTAIN	Epic 280	9409M	27
153"	3.200"		MOUNTAIN	Challenger X3.2	9321M	26
154"	1.375"		UTILITY	RipSaw Full	9089U	36
NEW 154"	1.500"	▲	UTILITY	ICE Cobra SWT	9422U	34
154"	1.500"	▲	UTILITY	ICE Cobra WT 150	9366U	35
154"	1.500"	▲	UTILITY	ICE Cobra WT 150	9414U	35
154"	1.500"		UTILITY	Cobra WT	9196U	34
154"	1.500"		UTILITY	Cobra WT	9322U	34
154"	1.600"		RACING	Cobra 1.6	9355R	-
154"	1.600"	▲	CROSS-COUNTRY	ICE Cobra 1.6	9273C	22
154"	1.600"	▲	CROSS-COUNTRY	ICE Cobra 1.6	9272C	22
154"	1.600"		CROSS-COUNTRY	Cobra 1.6	9282C	22
154"	1.800"		UTILITY	Cobra WT	9195U	34
154"	2.000"		MOUNTAIN	Challenger	9088M	31
154"	2.000"		MOUNTAIN	Challenger	9188M	31
154"	2.313"		MOUNTAIN	Challenger	9065M	31
154"	2.500"		MOUNTAIN	Challenger Extreme	9104M	29
154"	2.500"		MOUNTAIN	Peak 2.5	9230M	30
154"	2.500"		MOUNTAIN	Challenger Extreme	9102M	29
154"	2.500"		MOUNTAIN	Peak 2.5	9232M	30
154"	2.600"		MOUNTAIN	Conquer 260	9392M	28
154"	2.800"		MOUNTAIN	Conquer 280	9341M	28
156"	1.000"		UTILITY	Explore	9806U	-
156"	1.250"		UTILITY	RipSaw Full	9002U	36
156"	1.250"		UTILITY	RipSaw Full	9151U	36
156"	1.250"	▲	UTILITY	ICE WideTrack	9008U	36
156"	1.500"		UTILITY	Cobra SWT	9261U	34
156"	1.750"		UTILITY	Cobra SWT	9260U	34
156"	2.800"		MOUNTAIN	Conquer 280	9336M	28
156"	2.800"		MOUNTAIN	Epic 280	9408M	27
156"	3.000"		MOUNTAIN	Challenger X3	9309M	26
156"	3.200"		MOUNTAIN	Challenger X3.2	9320M	26

LENGTH	LUG HEIGHT	STUD.	CATEGORY	TRACK DESIGN	MODEL #	REF.
159"	1.500"		CROSS-COUNTRY	CrossOver	9005C	-
162"	2.500"		MOUNTAIN	Challenger Extreme	9175M	29
162"	2.500"		MOUNTAIN	Challenger Extreme	9176M	29
162"	2.800"		MOUNTAIN	Conquer 280	9335M	28
162"	2.800"		MOUNTAIN	Epic 280	9407M	27
162"	3.000"		MOUNTAIN	Challenger X3	9220M	26
162"	3.200"		MOUNTAIN	Challenger X3.2	9319M	26
163"	2.500"		MOUNTAIN	Challenger Extreme	9105M	29
163"	2.500"		MOUNTAIN	Peak 2.5	9231M	31
163"	2.500"		MOUNTAIN	Peak 2.5	9233M	30
165"	2.600"		MOUNTAIN	Conquer 260	9393M	28
165"	2.800"		MOUNTAIN	Conquer 280	9340M	28
174"	2.500"		MOUNTAIN	Challenger Extreme	9035M	29
174"	2.500"		MOUNTAIN	Challenger Extreme	9036M	29
174"	2.800"		MOUNTAIN	Conquer 280	9334M	28
174"	3.000"		MOUNTAIN	Challenger Extreme	9115M	29
174"	3.200"		MOUNTAIN	Challenger X3.2	9311M	26
175"	2.800"		MOUNTAIN	Conquer 280	9360M	28

\*Contact your dealer for specific details or [servicesnowtracks@camso.co](mailto:servicesnowtracks@camso.co)

We're dedicated to offer tracks that meet riders' needs, from trails to backcountry enthusiasts, all the way to professional racers.

We encourage clients who are looking for a more specific track model to contact our assistance line: the product listing in this brochure and on our website only represents a portion of our complete snowmobile tracks offer.



# GO FURTHER

## A SERVICE WHEN AND WHERE YOU NEED IT

Camso's technical expertise and service are second to none. Wherever in the world you're located, access a Camso expert through one of our many dealers, distributors, or through our direct assistance line.

Camso tracks are covered by a best-in-class warranty. No matter what Camso track you choose, we guarantee long service life, exceptional resistance to damage, low maintenance, and superior traction.

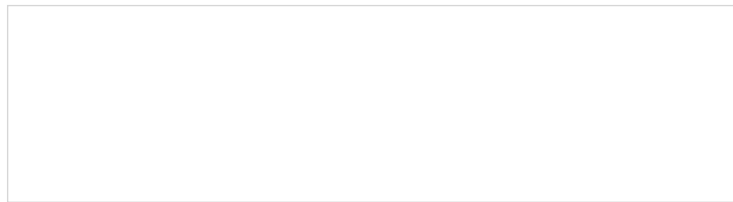
For more information, contact us through our direct assistance line:

**1-888-TRACTION (1-888-722-8466) | [servicesnowtracks@camso.co](mailto:servicesnowtracks@camso.co)**

PRINTED IN CANADA 2999-20-0066



CONNECT WITH US  
FOR EXCLUSIVE  
ROAD FREE CONTENT



[camso.co](http://camso.co)

Models, specifications, designs or accessories shown or indicated may change or be discontinued without notice. See your local Camso dealer for details, pricing and availability. Only professionals should install the track onto your sled. WARNING: Riding a snowmobile can be dangerous; serious injury, including death, can occur. Read carefully and follow all the instructions in the user manual. Enjoy the off-road safely and responsibly, always wear a helmet and prescribed protective gear and never drink and drive. Some of the images in this brochure are of professional riders under controlled conditions. Do not attempt to replicate. | Copyright © 2020 Camso Inc. All rights reserved.

