



DATASHEET | MATERIAL HANDLING

# INDUSTRIAL PNEUMATIC TIRES

IMPERIAL DATA

BLUE SECTIONS REPRESENT WHEEL DIAMETER

# INDUSTRIAL PNEUMATIC TIRES

## TECHNICAL DATA

TIRE SIZE	PR	BRAND / PRODUCT NAME	TREAD PATTERN	TUBE* & VALVE**	FLAP	RIM SIZE <sup>1</sup>		RUBBER COMPOUND		LOAD INDEX & SPEED SYMBOL	INFLATION PRESSURE (psi)	ACTUAL TIRE DIMENSIONS (in)				LOAD CAPACITY <sup>2</sup> (lbs)								STATIC (0 mph)	
						RECOMMENDED	ALTERNATIVE	BLACK	NON-MARKING			Overall diameter	Overall width	Original tread depth	Static loaded radius	COUNTERBALANCED LIFT TRUCKS				OTHER VEHICLES <sup>3</sup> AT MAXIMUM SPEED					
																Up to 16 mph		Up to 20 mph							
																Load wheel	Steering wheel	Load wheel	Steering wheel	Up to 6 mph	Up to 16 mph	Up to 25 mph	Up to 30 mph		
<b>8"</b>																									
4.00 - 8 (4.80-8)	8	SOLIDEAL RIB	RIB	JS2	90-8	3.25I	3.00D	■		94	A5	130	16.7	4.5	0.3	7.6	1920	1475	1850	1365	1920	1475	1310	1245	2225
4.00 - 8 (4.80-8)	10	SOLIDEAL AIR 550	ED+	JS2	90-8	3.25I	3.00D	■		97	A5	145	16.6	4.5	0.5	7.7	2095	1610	2015	1490	2095	1610	1435	1355	2425
5.00 - 8 (5.70-8)	8	SOLIDEAL AIR 550	ED+	JS2	90-8	3.00D	3.25I/3.75I	■		106	A5	120	18.4	5.2	0.5	8.3	2725	2095	2625	1940	2725	2095	1865	1765	3165
5.00 - 8 (5.70-8)	8	SOLIDEAL AIR 570	AIR 570	JS2	90-8	3.00D	3.25I/3.75I	■		106	A5	120	18.4	5.0	0.4	8.5	2725	2095	2625	1940	2725	2095	1865	1765	3165
5.00 - 8 (5.70-8)	10	SOLIDEAL HAULER	HALT	JS2	90-8	3.00D	3.25I/3.75I	■	■	111	A5	145	18.1	5.2	0.6	8.2	3120	2405	3010	2225	3120	2405	2140	2015	3625
5.00 - 8 (5.70-8)	10	SOLIDEAL AIR 550	ED+	JS2	90-8	3.00D	3.25I/3.75I	■	■	111	A5	145	18.1	5.0	0.6	8.4	3120	2405	3010	2225	3120	2405	2140	2015	3625
15 x 4 1/2 - 8 (125/75-8)	12	SOLIDEAL AIR 570	AIR 570	JS2	90-8	3.00D	3.25I	■		100	A5	145	15.5	4.4	0.4	7.2	2295	1765	2205	1630	2295	1765	1565	1475	2670
16 x 6 - 8 (150/75-8)	10	SOLIDEAL AIR 570	AIR 570	V3-02-5	130-8	4.33R	-	■		107	A5	115	16.8	5.5	0.4	7.8	2800	2150	2690	1985	2800	2150	1920	1810	3240
16 x 6 - 8 (150/75-8)	14	SOLIDEAL AIR 550	ED+	V3-02-5	130-8	4.33R	-	■		111	A5	140	16.5	5.8	0.5	7.5	3120	2405	3010	2225	3120	2405	2140	2015	3625
16 x 6 - 8 (150/75-8)	16	SOLIDEAL HAULER	HALT	V3-02-5	130-8	4.33R	-	■	■	113	A5	145	16.6	5.8	0.5	7.5	3295	2535	3175	2350	3295	2535	2260	2125	3825
18 x 7 - 8 (180/70-8)	14	SOLIDEAL HAULER	HALT	V3-02-5	130-8	4.33R	5.00F	■		121	A5	130	18.6	6.5	0.7	8.3	4155	3195	4000	2955	4155	3195	2845	2690	4830
18 x 7 - 8 (180/70-8)	14	SOLIDEAL AIR 570	AIR 570	V3-02-19	130-8	4.33R	5.00F	■		121	A5	130	18.5	6.3	0.5	9.3	4155	3195	4000	2955	4155	3195	2845	2690	4830
18 x 7 - 8 (180/70-8)	14	SOLIDEAL AIR 550	ED+	V3-02-5	130-8	4.33R	5.00F	■		121	A5	130	18.1	6.1	0.4	8.2	4155	3195	4000	2955	4155	3195	2845	2690	4830
18 x 7 - 8 (180/70-8)	16	SOLIDEAL HAULER	HALT	V3-02-5	130-8	4.33R	5.00F	■	■	125	A5	145	18.6	6.5	0.7	8.3	4730	3640	4555	3360	4730	3640	3240	3055	5490
18 x 7 - 8 (180/70-8)	16	SOLIDEAL AIR 550	ED+	V3-02-5	130-8	4.33R	5.00F	■	■	125	A5	145	18.1	6.2	0.6	8.1	4730	3640	4555	3360	4730	3640	3240	3055	5490
18 x 7 - 8 (180/70-8)	16	SOLIDEAL AIR 570	AIR 570	V3-02-19	130-8	4.33R	5.00F	■		125	A5	145	18.5	6.5	0.5	8.3	4730	3640	4555	3360	4730	3640	3240	3055	5490
<b>9"</b>																									
6.00 - 9 (6.90-9)	10	SOLIDEAL HAULER	HALT	JS2	125-9	4.00E	-	■		118	A5	125	21.1	6.6	0.6	9.6	3780	2910	3640	2690	3780	2910	2590	2445	4400
6.00 - 9 (6.90-9)	10	SOLIDEAL AIR 550	ED+	JS2	125-9	4.00E	-	■	■	118	A5	125	21.0	6.5	0.4	9.6	3780	2910	3640	2690	3780	2910	2590	2445	4400
6.00 - 9 (6.90-9)	10	SOLIDEAL AIR 570	AIR 570	JS2	125-9	4.00E	-	■		118	A5	125	21.3	6.2	0.5	9.8	3780	2910	3640	2690	3780	2910	2590	2445	4400
6.00 - 9 (6.90-9)	10	SOLIDEAL AIR 561	AIR 561	JS2	125-9	4.00E	-	■		118	A5	125	21.1	6.3	0.5	9.9	3780	2910	3640	2690	3780	2910	2590	2445	4400
6.00 - 9 (6.90-9)	12	SOLIDEAL HAULER	HALT	JS2	125-9	4.00E	-	■		121	A5	145	21.4	6.5	0.6	9.6	4155	3195	4000	2955	4155	3195	2845	2690	4830
6.00 - 9 (6.90-9)	12	SOLIDEAL AIR 550	ED+	JS2	125-9	4.00E	-	■	■	121	A5	145	21.1	6.3	0.6	9.7	4155	3195	4000	2955	4155	3195	2845	2690	4830
21 x 8 - 9 (200/75-9)	14	SOLIDEAL AIR 550	ED+	JS2	180-9	6.00E	7.00E	■	■	131	A5	130	20.9	7.6	0.8	9.4	5590	4300	5380	3980	5590	4300	3825	3615	6495
21 x 8 - 9 (200/75-9)	16	SOLIDEAL HAULER	HALT	JS2	180-9	6.00E	7.00E	■		134	A5	145	21.5	7.8	0.7	9.4	6075	4675	5840	4320	6075	4675	4155	3925	7055
21 x 8 - 9 (200/75-9)	16	SOLIDEAL AIR 570	AIR 570	JS2	180-9	6.00E	7.00E	■		134	A5	145	20.8	7.8	0.5	9.5	6075	4675	5840	4320	6075	4675	4155	3925	7055
<b>10"</b>																									
6.50 - 10	10	SOLIDEAL HAULER	HALT	JS2	140-10	5.00F	5.50F	■	■	122	A5	110	23.3	7.2	0.6	10.7	4300	3305	4135	3065	4300	3305	2945	2780	4995
6.50 - 10	10	SOLIDEAL AIR 550	ED+	JS2	140-10	5.00F	5.50F	■	■	122	A5	110	23.2	7.0	0.4	10.7	4300	3305	4135	3065	4300	3305	2945	2780	4995
6.50 - 10	10	SOLIDEAL AIR 561	AIR 561	JS2	140-10	5.00F	5.50F	■		122	A5	110	23.1	6.9	0.5	10.7	4300	3305	4135	3065	4300	3305	2945	2780	4995
6.50 - 10	12	SOLIDEAL HAULER	HALT	JS2	140-10	5.00F	5.50F	■		125	A5	130	23.4	7.1	0.6	10.7	4730	3640	4555	3360	4730	3640	3240	3055	5490
6.50 - 10	12	SOLIDEAL AIR 550	ED+	JS2	140-10	5.00F	5.50F	■		125	A5	130	23.1	7.3	0.6	10.4	4730	3640	4555	3360	4730	3640	3240	3055	5490
6.50 - 10	14	SOLIDEAL HAULER	HALT	JS2	140-10	5.00F	5.50F	■		128	A5	145	23.4	7.1	0.6	10.6	5160	3970	4960	3670	5160	3970	3525	3330	5995
6.50 - 10	14	SOLIDEAL AIR 550	ED+	JS2	140-10	5.00F	5.50F	■	■	128	A5	145	23.1	7.1	0.4	10.7	5160	3970	4960	3670	5160	3970	3525	3330	5995

# INDUSTRIAL PNEUMATIC TIRES

## TECHNICAL DATA

TIRE SIZE	PR	BRAND / PRODUCT NAME	TREAD PATTERN	TUBE* & VALVE**	FLAP	RIM SIZE <sup>1</sup>		RUBBER COMPOUND		LOAD INDEX & SPEED SYMBOL	INFLATION PRESSURE (psi)	ACTUAL TIRE DIMENSIONS (in)				LOAD CAPACITY <sup>2</sup> (lbs)								STATIC (0 mph)	
						RECOMMENDED	ALTERNATIVE	BLACK	NON-MARKING			Overall diameter	Overall width	Original tread depth	Static loaded radius	COUNTERBALANCED LIFT TRUCKS				OTHER VEHICLES <sup>3</sup> AT MAXIMUM SPEED					
																Up to 16 mph		Up to 20 mph		Up to 6 mph		Up to 16 mph			Up to 25 mph
						Load wheel	Steering wheel	Load wheel	Steering wheel			Up to 6 mph	Up to 16 mph	Up to 25 mph	Up to 30 mph										
<b>10"</b>																									
7.50 - 10	16	SOLIDEAL AIR 550	ED+	JS2	140-10	5.50F	5.00F	■		138	A5	145	-	-	-	-	6770	5205	6505	4815	6770	5205	4630	4365	7860
23 x 9 - 10 (225/75-10)	16	SOLIDEAL AIR 570	AIR 570	JS2	180-10	6.50F	-	■		137	A5	115	23.2	8.4	0.6	10.6	6590	5070	6340	4695	6590	5070	4510	4255	7660
23 x 9 - 10 (225/75-10)	18	SOLIDEAL AIR 550	ED+	JS2	180-10	6.50F	-	■	■	139	A5	130	22.8	9.1	0.8	10.4	6965	5355	6700	4960	6965	5355	4775	4495	8090
23 x 9 - 10 (225/75-10)	18	SOLIDEAL AIR 570	AIR 570	V3-02-07	180-10	6.50F	-	■		139	A5	130	23.4	8.5	0.6	10.7	6965	5355	6700	4960	6965	5355	4775	4495	8090
23 x 9 - 10 (225/75-10)	20	SOLIDEAL HAULER	HALT	JS2	180-10	6.50F	-	■		142	A5	145	22.8	9.3	0.6	10.3	7595	5840	7310	5400	7595	5840	5205	4905	8820
<b>12"</b>																									
23 x 10 - 12 (250/55-12)	16	SOLIDEAL HAULER	HALT	JS2	210-12	8.00G	-	■		139	A5	115	23.8	9.7	0.7	10.8	6965	5355	6700	4960	6965	5355	4775	4495	8090
23 x 10 - 12 (250/55-12)	16	SOLIDEAL AIR 550	ED+	JS2	210-12	8.00G	-	■		139	A5	115	23.3	9.4	0.6	10.6	6965	5355	6700	4960	6965	5355	4775	4495	8090
27 x 10 - 12 (250/75-12)	14	SOLIDEAL HAULER	HALT	V3-02-5	210-12	8.00G	-	■		143	A5	100	26.7	9.9	0.9	11.9	7815	6010	7505	5555	7815	6010	5345	5050	9070
27 x 10 - 12 (250/75-12)	20	SOLIDEAL HAULER	HALT	V3-02-5	210-12	8.00G	-	■		152	A5	145	26.5	9.8	0.9	12.0	10175	7825	9790	7240	10175	7825	6965	6570	11815
27 x 10 - 12 (250/75-12)	20	SOLIDEAL AIR 550	ED+	V3-02-5	210-12	8.00G	-	■		152	A5	145	26.8	10.0	0.6	12.0	10175	7825	9790	7240	10175	7825	6965	6570	11815
27 x 10 - 12 (250/75-12)	24	SOLIDEAL HAULER	HALT	V3-02-5	210-12	8.00G	-	■		158	A5	145	26.5	9.8	0.9	12.0	12180	9370	11720	8665	12180	9370	8345	7870	14155
7.00 - 12	12	SOLIDEAL HAULER	HALT	TR75A	135-12	5.00S	-	■		133	A5	125	26.8	7.6	0.7	12.2	5910	4540	5675	4200	5910	4540	4045	3815	6855
7.00 - 12	12	SOLIDEAL AIR 550	ED+	TR75A	135-12	5.00S	-	■	■	133	A5	125	26.6	7.6	0.6	12.0	5910	4540	5675	4200	5910	4540	4045	3815	6855
7.00 - 12	14	SOLIDEAL HAULER	HALT	TR75A	135-12	5.00S	-	■	■	134	A5	130	26.8	7.7	0.7	12.2	6075	4675	5840	4320	6075	4675	4155	3925	7055
7.00 - 12	14	SOLIDEAL AIR 561	AIR 561	TR75A	135-12	5.00S	-	■		134	A5	130	26.5	7.3	0.6	12.3	6075	4675	5840	4320	6075	4675	4155	3925	7055
7.00 - 12	14	SOLIDEAL AIR 550	ED+	TR75A	135-12	5.00S	-	■	■	134	A5	130	26.7	7.6	0.5	12.3	6075	4675	5840	4320	6075	4675	4155	3925	7055
7.00 - 12	16	SOLIDEAL HAULER	HALT	TR75A	135-12	5.00S	-	■		136	A5	145	26.9	7.7	0.7	12.2	6415	4940	6175	4565	6415	4940	4400	4145	7450
7.00 - 12	16	SOLIDEAL AIR 550	ED+	TR75A	135-12	5.00S	-	■		136	A5	145	26.3	7.5	0.5	12.2	6415	4940	6175	4565	6415	4940	4400	4145	7450
<b>13"</b>																									
23 x 5 (5.00-13)	10	SOLIDEAL AIR 550	ED+	JS2	130-13	3.75P	-	■	■	122	A5	110	-	-	-	-	4300	3305	4135	3065	4300	3305	2945	2780	4995
<b>15"</b>																									
355 / 45 - 15 (28x12.5-15)	24	SOLIDEAL AIR 550	ED+	V3-02-10	260-15	9.75	-	■		159	A5	145	-	-	-	-	12545	9645	12060	8920	12545	9645	8585	8100	14560
355 / 45 - 15 (28x12.5-15)	24	SOLIDEAL HAULER	HALT	V3-02-10	260-15	9.75	-	■		159	A5	145	27.4	11.5	0.7	12.4	12545	9645	12060	8920	12545	9645	8585	8100	14560
355 / 65 - 15 (32x12.1-15)	24	SOLIDEAL AIR 550	ED+	TR78A	260-15	9.75	-	■		170	A5	145	-	-	-	-	17195	13230	16535	12235	17195	13230	11775	11110	19975
355 / 65 - 15 (32x12.1-15)	24	SOLIDEAL HAULER	HALT	TR78A	260-15	9.75	-	■		170	A5	145	31.7	12.4	1.1	13.9	17195	13230	16535	12235	17195	13230	11775	11110	19975
28 x 9 - 15 (8.15-15 & 225/75-15)	14	SOLIDEAL HAULER	HALT	V3-02-08	180-15 HD	7.00	-	■		146	A5	145	27.8	8.6	0.7	12.7	8600	6615	8265	6120	8600	6615	5885	5555	9985
28 x 9 - 15 (8.15-15 & 225/75-15)	14	SOLIDEAL AIR 550	ED+	V3-02-08	180-15 HD	7.00	-	■	■	146	A5	145	28.0	8.9	0.5	13.0	8600	6615	8265	6120	8600	6615	5885	5555	9985
28 x 9 - 15 (8.15-15 & 225/75-15)	14	SOLIDEAL AIR 570	AIR 570	V3-02-08	180-15 HD	7.00	-	■		146	A5	145	27.8	8.3	0.6	12.9	8600	6615	8265	6120	8600	6615	5885	5555	9985
28 x 9 - 15 (8.15-15 & 225/75-15)	16	SOLIDEAL AIR 550	ED+	V3-02-08	180-15 HD	7.00	-	■		146	A5	145	27.8	8.8	0.7	12.8	8600	6615	8265	6120	8600	6615	5885	5555	9985
28 x 9 - 15 (8.15-15 & 225/75-15)	18	SOLIDEAL AIR 570	AIR 570	V3-02-08	180-15 HD	7.00	-	■		146	A5	145	27.8	8.3	0.6	13.0	8600	6615	8265	6120	8600	6615	5885	5555	9985

BLUE SECTIONS REPRESENT WHEEL DIAMETER

# INDUSTRIAL PNEUMATIC TIRES

## TECHNICAL DATA

TIRE SIZE	PR	BRAND / PRODUCT NAME	TREAD PATTERN	TUBE* & VALVE**	FLAP	RIM SIZE <sup>1</sup>		RUBBER COMPOUND		LOAD INDEX & SPEED SYMBOL	INFLATION PRESSURE (psi)	ACTUAL TIRE DIMENSIONS (in)				LOAD CAPACITY <sup>2</sup> (lbs)								STATIC (0 mph)	
						RECOMMENDED	ALTERNATIVE	BLACK	NON-MARKING			Overall diameter	Overall width	Original tread depth	Static loaded radius	COUNTERBALANCED LIFT TRUCKS				OTHER VEHICLES <sup>3</sup> AT MAXIMUM SPEED					
																Up to 16 mph		Up to 20 mph		Up to 6 mph	Up to 16 mph	Up to 25 mph	Up to 30 mph		
						Load wheel	Steering wheel	Load wheel	Steering wheel																
<b>15"</b>																									
250 - 15 (250/70-15)	16	SOLIDEAL AIR 550	ED+	TR77A	180-15 HD	7.50	7.00	■		150	A5	120	28.9	9.4	0.5	13.3	9600	7385	9235	6835	9600	7385	6570	6205	11155
250 - 15 (250/70-15)	16	SOLIDEAL HAULER	HALT	TR77A	180-15 HD	7.50	7.00	■		150	A5	120	29.3	8.9	0.7	13.3	9600	7385	9235	6835	9600	7385	6570	6205	11155
250 - 15 (250/70-15)	18	SOLIDEAL AIR 550	ED+	TR77A	180-15 HD	7.50	7.00	■	■	153	A5	140	28.9	9.1	0.8	13.2	10460	8045	10065	7440	10460	8045	7165	6755	12145
250 - 15 (250/70-15)	20	SOLIDEAL HAULER	HALT	TR77A	180-15 HD	7.50	7.00	■	■	155	A5	145	28.9	9.1	0.9	13.3	11110	8545	10680	7905	11110	8545	7605	7175	12895
300 - 15 (315/70-15)	18	SOLIDEAL HAULER	HALT	TR78A	180-15 HD	8.00	-	■		160	A5	110	33.5	10.9	1.0	15.1	12895	9920	12400	9180	12895	9920	8830	8335	14980
300 - 15 (315/70-15)	18	SOLIDEAL AIR 550	ED+	TR78A	180-15 HD	8.00	-	■	■	160	A5	110	32.8	11.3	0.7	14.8	12895	9920	12400	9180	12895	9920	8830	8335	14980
300 - 15 (315/70-15)	20	SOLIDEAL HAULER	HALT	TR78A	180-15 HD	8.00	-	■		164	A5	130	32.8	11.1	1.0	14.8	14330	11025	13780	10195	14330	11025	9810	9260	16645
300 - 15 (315/70-15)	22	SOLIDEAL HAULER	HALT	TR78A	180-15 HD	8.00	-	■	■	165	A5	145	32.8	11.1	1.0	14.8	14760	11355	14200	10505	14760	11355	10110	9535	17140
300 - 15 (315/70-15)	22	SOLIDEAL AIR 550	ED+	TR78A	180-15 HD	8.00	-	■		165	A5	145	-	-	-	-	14760	11355	14200	10505	14760	11355	10110	9535	17140
315 / 85 - 15	20	SOLIDEAL HAULER	HALT	TR78A	180-15 HD	7.50	-	■		172	A5	140	35.7	11.4	1.0	15.6	18055	13890	17360	12855	18055	13890	12355	11660	20975
7.00 - 15	14	SOLIDEAL HAULER	HALT	TR75A	180-15	5.50	5.00	■		140	A5	130	28.9	7.5	0.9	13.1	7385	5675	7100	5245	7385	5675	4925	4650	8575
7.00 - 15	14	SOLIDEAL AIR 561	AIR 561	TR75A	180-15	5.50	5.00	■		140	A5	130	29.7	7.7	0.6	13.9	7385	5675	7100	5245	7385	5675	4925	4650	8575
7.00 - 15	14	SOLIDEAL AIR 550	ED+	TR75A	180-15	5.50	5.00	■		140	A5	130	30.0	8.0	0.7	13.5	7385	5675	7100	5245	7385	5675	4925	4650	8575
7.50 - 15	14	SOLIDEAL HAULER	HALT	TR75A	180-15	6.00	5.50/6.50	■		144	A5	135	30.7	8.3	0.8	14.0	8025	6175	7715	5710	8025	6175	5490	5180	9325
7.50 - 15	14	SOLIDEAL AIR 550	ED+	TR75A	180-15	6.00	5.50/6.50	■		144	A5	135	30.9	8.3	0.8	14.1	8025	6175	7715	5710	8025	6175	5490	5180	9325
8.25 - 15 (7.50-15(32))	14	SOLIDEAL HAULER	HALT	TR77A	180-15	6.50	6.00/7.00	■		149	A5	115	33.1	9.7	0.7	15.0	9315	7165	8960	6625	9315	7165	6380	6020	10825
8.25 - 15 (7.50-15(32))	14	SOLIDEAL AIR 550	ED+	TR77A	180-15	6.50	6.00/7.00	■	■	149	A5	115	33.3	9.9	0.5	15.4	9315	7165	8960	6625	9315	7165	6380	6020	10825
8.25 - 15 (7.50-15(32))	16	SOLIDEAL HAULER	HALT	TR77A	180-15	6.50	6.00/7.00	■		152	A5	135	33.1	9.7	0.9	15.0	10175	7825	9790	7240	10175	7825	6965	6570	11815
8.25 - 15 (7.50-15(32))	16	SOLIDEAL AIR 550	ED+	TR77A	180-15	6.50	6.00/7.00	■	■	152	A5	135	33.3	9.9	0.7	15.0	10175	7825	9790	7240	10175	7825	6965	6570	11815
8.25 - 15 (7.50-15(32))	18	SOLIDEAL HAULER	HALT	TR77A	180-15	6.50	6.00/7.00	■		153	A5	145	33.1	9.7	0.7	15.0	10460	8045	10065	7440	10460	8045	7165	6755	12145
<b>16"</b>																									
7.50 - 16	12	SOLIDEAL AIR 550	ED+	TR75A	180-16	6.0	5.0/5.50	■		144	A5	115	-	-	-	-	8025	6175	7715	5710	8025	6175	5490	5180	9325
<b>16.5"</b>																									
8.00 - 16.5	10	SOLIDEAL AIR 561	AIR 561	TBLS	-	6.75		■		121	A5	80	29.1	8.9	0.6	-	4155	3195	4000	2955	4155	3195	2845	2690	4830
8.75 - 16.5	10	SOLIDEAL AIR 561	AIR 561	TBLS	-	6.75	6.00	■		124	A5	75	29.8	8.8	0.7	-	4585	3525	4410	3265	4585	3525	3140	2965	5325
9.50 - 16.5	10	SOLIDEAL AIR 561	AIR 561	TBLS	-	6.75	6.00	■		127	A5	75	31.5	10.0	0.7	-	5015	3860	4830	3570	5015	3860	3440	3240	5830
<b>20"</b>																									
9.00 - 20	14	SOLIDEAL AIR 550	ED+	V3-02-14	200-20	7.00	6.50/7.50	■		160	A5	130	41.2	11.3	0.9	18.7	12895	9920	12400	9180	12895	9920	8830	8335	14980
10.00 - 20	16	SOLIDEAL HAULER	HALT	V3-02-14	200-20	7.50	7.00/8.00	■	■	164	A5	130	42.8	11.1	1.2	19.5	14330	11025	13780	10195	14330	11025	9810	9260	16645
10.00 - 20	16	SOLIDEAL HAULER	HA SM	V3-02-14	200-20	7.50	7.00/8.00	■		164	A5	130	42.7	11.3	-	19.6	14330	11025	13780	10195	14330	11025	9810	9260	16645
10.00 - 20	16	SOLIDEAL HAULER	HA HA TR	V3-02-14	200-20	7.50	7.00/8.00	■		164	A5	130	42.7	11.3	1.2	19.6	14330	11025	13780	10195	14330	11025	9810	9260	16645
10.00 - 20	16	SOLIDEAL AIR 550	ED+	V3-02-14	200-20	7.50	7.00/8.00	■		164	A5	130	41.9	11.3	0.5	19.4	14330	11025	13780	10195	14330	11025	9810	9260	16645
10.00 - 20	20	SOLIDEAL AIR 550	ED+	V3-02-14	200-20	7.50	7.00/8.00	■		166	A5	145	-	-	-	-	15190	11685	14605	10815	15190	11685	10395	9810	17650

BLUE SECTIONS REPRESENT WHEEL DIAMETER

# INDUSTRIAL PNEUMATIC TIRES

## TECHNICAL DATA

TIRE SIZE	PR	BRAND / PRODUCT NAME	TREAD PATTERN	TUBE* & VALVE**	FLAP	RIM SIZE <sup>1</sup>		RUBBER COMPOUND		LOAD INDEX & SPEED SYMBOL	INFLATION PRESSURE (psi)	ACTUAL TIRE DIMENSIONS (in)				LOAD CAPACITY <sup>2</sup> (lbs)								STATIC (0 mph)	
						RECOMMENDED	ALTERNATIVE	BLACK	NON-MARKING			Overall diameter	Overall width	Original tread depth	Static loaded radius	COUNTERBALANCED LIFT TRUCKS				OTHER VEHICLES <sup>3</sup> AT MAXIMUM SPEED					
																Up to 16 mph		Up to 20 mph		Up to 6 mph	Up to 16 mph	Up to 25 mph	Up to 30 mph		
<b>20"</b>																									
11.00 - 20	16	SOLIDEAL HAULER	HALT	V3-02-14	200-20	8.00	7.50/8.50	■		167	A5	130	42.9	11.9	1.2	20.0	15620	12015	15025	11110	15620	12015	10690	10095	18145
11.00 - 20	16	SOLIDEAL AIR 550	ED+	V3-02-14	200-20	8.00	7.50/8.50	■		167	A5	130	-	-	-	-	15620	12015	15025	11110	15620	12015	10690	10095	18145
11.00 - 20	18	SOLIDEAL HAULER	HALT	V3-02-14	200-20	8.00	7.50/8.50	■		170	A5	145	42.9	11.9	1.3	19.5	17195	13230	16535	12235	17195	13230	11775	11110	19975
12.00 - 20	18	SOLIDEAL HAULER	HALT	V3-02-14	200-20	8.50	8.00/9.00	■		172	A5	130	45.3	13.0	1.4	20.6	18055	13890	17360	12855	18055	13890	12355	11660	20975
12.00 - 20	20	SOLIDEAL HAULER	HALT	V3-02-14	200-20	8.50	8.00/9.00	■	■	176	A5	145	45.3	12.5	1.4	20.4	20350	15655	19565	14485	20350	15655	13935	13150	23635
12.00 - 20	20	SOLIDEAL HAULER	HA SM	V3-02-14	200-20	8.50	8.00/9.00	■		176	A5	145	45.1	12.6	-	20.8	20350	15655	19565	14485	20350	15655	13935	13150	23635
12.00 - 20	20	SOLIDEAL HAULER	HA HA TR	V3-02-14	200-20	8.50	8.00/9.00	■		176	A5	145	44.6	12.6	1.4	20.6	20350	15655	19565	14485	20350	15655	13935	13150	23635
12.00 - 20	20	HAULER PORTMASTER	HA HD	V3-02-14	200-20	8.50	8.00/9.00	■		176	A5	145	45.0	12.6	2.2	20.3	20350	15655	19565	14485	20350	15655	13935	13150	23635
12.00 - 20	20	SOLIDEAL AIR 550	ED+	V3-02-14	200-20	8.50	8.00/9.00	■		176	A5	145	44.8	12.8	0.7	20.7	20350	15655	19565	14485	20350	15655	13935	13150	23635
12.00 - 20	28	SOLIDEAL HAULER	HALT	V3-02-07	200-20	8.50	8.00/9.00	■		176	A5	145	45.3	12.7	1.4	20.6	20350	15655	19565	14485	20350	15655	13935	13150	23635
12.00 - 20	28	HAULER PORTMASTER	HA HD	V3-02-14	200-20	8.50	8.00/9.00	■		176	A5	145	44.5	12.6	2.2	20.2	20350	15655	19565	14485	20350	15655	13935	13150	23635
12.00 - 20	28	SOLIDEAL AIR 550	ED+	V3-02-14	200-20	8.50	8.00/9.00	■		176	A5	145	-	-	-	-	20350	15655	19565	14485	20350	15655	13935	13150	23635
<b>24"</b>																									
14.00 - 24	28	SOLIDEAL HAULER	HALT	V3-02-07	250-24	10.00	W/VA/WI	■		188	A5	145	53.7	14.6	2.0	24.5	28660	22045	27560	20395	28660	22045	19620	18520	33290
<b>25"</b>																									
16.00 - 25	32	SOLIDEAL HAULER	HALT	TBLS	-	11.25/2.0	13.00/2.0	■		195	A5	145	58.0	16.6	2.2	26.1	35825	27560	34445	25495	35825	27560	24525	23150	41610

Remarks

- (1) Consult tire and wheel manufacturer for confirmation of the suitability of the tire/rim combination particularly with regard to rim profile and wheel strength.
- (2) The speeds quoted in the table are the maximum speeds of the unloaded vehicle. An increase in load capacity for lower speeds is not permitted. Loads apply to cyclic service applications. Cyclic service means applications where tire are not used continuously at the load indicated by its Load Index and Speed Symbol. It does not refer to the length of time a vehicle is in use, but rather that there is a variation in load and/or speed.

- (3) This category includes:
  - Drive and steer wheels on other than counterbalanced forklift trucks
  - Mobile cranes
  - Free-rolling wheels on other vehicles (trailers) up to a maximum distance of 2000 m per journey.

For longer distances, fitted to wheels for rotary plants, for non intermittent service or for straddle carrier applications, please consult the technical department.

For sideloaders applications, please consult the technical department.

**NHS – Not for Highway Service:** Tires primarily designed for use outside of public roads, but suitable for temporary/incidental use on public roads.

\* Tube size is identical to tire size

\*\* Table shows standard valves. Other valves on request.

**This document contains technical data of all products globally. It is possible that certain items are not sold in your region.**

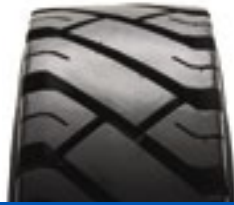
**Please contact your local sales contact to check tire availability in your region.**

# INDUSTRIAL PNEUMATIC TIRES

## TECHNICAL DATA



SOLIDEAL  
HAULER LT



SOLIDEAL  
AIR 550



SOLIDEAL  
SM



SOLIDEAL  
HA-TR



SOLIDEAL  
PORTMASTER HD



SOLIDEAL  
RIB



SOLIDEAL  
ED PLUS NM