

WE START WE START



WHERE WHERE

THE ROAD THE ROAD

ENDS ENDS

DATASHEET | MATERIAL HANDLING
PRESS-ON TIRES

PRESS-ON TIRES

TECHNICAL DATA

TIRE SIZE ¹	BRAND	TREAD PATTERN		RUBBER COMPOUND			ACTUAL TIRE DIMENSIONS			LOAD CAPACITY (lb.) ²										
		Smooth	Traction	Black	Non-marking	NMAS	Overall diameter (in.)	Overall width (in.)	Replacement overall diameter ⁵ (in.)	Counterbalanced lift trucks						Other vehicles ³				Static 0 mph
										Up to 6 mph		Up to 10 mph		Up to 16 mph		4 mph	6 mph	10 mph	16 mph	
		Load wheel	Steering wheel	Load wheel	Steering wheel	Load wheel	Steering wheel													
5"																				
9 X 5 X 5	SOLIDEAL PON 555	■		■			9.0	5.0	7.9	2115	1740	1885	1575	1530	1255	2115	1740	1500	1135	3195
6 1/4"																				
10 X 4 X 6 1/4	SOLIDEAL PON 555	■		■			9.9	4.0	8.9	1720	1410	1545	1300	1245	1025	1720	1410	1235	925	2610
10 X 5 X 6 1/4	SOLIDEAL PON 555	■		■			10.0	5.0	8.9	2270	1850	2015	1700	1640	1345	2270	1850	1610	1215	3415
6 1/2"																				
10 X 4 X 6 1/2	SOLIDEAL PON 775	■		■		■	10.0	4.0	9.0	1720	1410	1530	1290	1245	1025	1720	1410	1225	915	2590
10 X 4 X 6 1/2	SOLIDEAL PON 555	■		■	■		9.9	4.0	9.0	1720	1410	1530	1290	1245	1025	1720	1410	1225	915	2590
10 X 4 3/4 X 6 1/2	SOLIDEAL PON 555	■		■			10.0	4.8	9.0	2095	1720	1865	1565	1520	1245	2095	1720	1490	1125	3155
10 X 5 X 6 1/2	SOLIDEAL PON 775	■		■		■	10.0	5.0	9.0	2225	1830	1995	1675	1620	1335	2225	1830	1600	1200	3375
10 X 5 X 6 1/2	SOLIDEAL PON 550		■	■	■		9.9	5.0	9.0	2225	1830	1995	1675	1620	1335	2225	1830	1600	1200	3375
10 X 5 X 6 1/2	SOLIDEAL PON 555	■		■	■		9.9	5.0	9.0	2225	1830	1995	1675	1620	1335	2225	1830	1600	1200	3375
10 1/2 X 5 X 6 1/2	SOLIDEAL PON 775	■		■		■	10.5	5.0	9.3	2360	1940	2115	1785	1720	1410	2360	1940	1700	1270	3585
10 1/2 X 5 X 6 1/2	SOLIDEAL PON 555	■		■	■		10.5	5.0	9.3	2360	1940	2115	1785	1720	1410	2360	1940	1700	1270	3585
10 1/2 X 6 X 6 1/2	SOLIDEAL PON 555	■		■			10.5	6.0	9.3	2955	2425	2625	2205	2140	1755	2955	2425	2095	1575	4440
8"																				
12 X 4 X 8	SOLIDEAL PON 555	■		■			12.0	4.0	10.8	1995	1640	1785	1500	1455	1190	1995	1640	1995	1070	3010
12 X 4 1/2 X 8	SOLIDEAL PON 775	■		■		■	12.0	4.5	10.8	2295	1885	2050	1720	1665	1365	2295	1885	1640	1235	3470
12 X 4 1/2 X 8	SOLIDEAL PON 555	■		■	■		12.0	4.5	10.8	2295	1885	2050	1720	1665	1365	2295	1885	1640	1235	3470
12 X 5 X 8	SOLIDEAL PON 555	■		■			12.0	5.0	10.8	2625	2160	2350	1960	1905	1565	2625	2160	1875	1400	3955
12 X 5 1/2 X 8	SOLIDEAL PON 555	■		■	■		12.0	5.5	10.8	2955	2425	2635	2215	2140	1755	2955	2425	2105	1575	4455
13 X 4 1/2 X 8	SOLIDEAL PON 555	■		■			13.0	4.5	11.5	2470	2030	2205	1850	1795	1475	2470	2030	1765	1325	3715
13 1/2 X 4 1/2 X 8	SOLIDEAL PON 555	■		■			13.5	4.5	11.8	2535	2070	2260	1895	1840	1510	2535	2070	1810	1355	3815
13 1/2 X 5 1/2 X 8	SOLIDEAL PON 775	■		■		■	13.5	5.5	11.9	3330	2735	2965	2490	2415	1975	3330	2735	2380	1785	5025
13 1/2 X 5 1/2 X 8	SOLIDEAL PON 550		■	■	■		13.5	5.5	11.9	3330	2735	2965	2490	2415	1975	3330	2735	2380	1785	5025
13 1/2 X 5 1/2 X 8	SOLIDEAL PON 555	■		■	■		13.5	5.5	11.8	3330	2735	2965	2490	2415	1975	3330	2735	2380	1785	5025

Blue sections represent hub size

PRESS-ON TIRES

TECHNICAL DATA

TIRE SIZE ¹	BRAND	TREAD PATTERN		RUBBER COMPOUND			ACTUAL TIRE DIMENSIONS			LOAD CAPACITY (lb.) ²										
		Smooth	Traction	Black	Non-marking	NMAS	Overall diameter (in.)	Overall width (in.)	Replacement overall diameter ⁵ (in.)	Counterbalanced lift trucks						Other vehicles ³				Static 0 mph
										Up to 6 mph		Up to 10 mph		Up to 16 mph		4 mph	6 mph	10 mph	16 mph	
		Load wheel	Steering wheel	Load wheel	Steering wheel	Load wheel	Steering wheel													
5"																				
9 X 5 X 5	SOLIDEAL PON 555	■		■			9.0	5.0	7.9	2115	1740	1885	1575	1530	1255	2115	1740	1500	1135	3195
6 1/4"																				
10 X 4 X 6 1/4	SOLIDEAL PON 555	■		■			9.9	4.0	8.9	1720	1410	1545	1300	1245	1025	1720	1410	1235	925	2610
10 X 5 X 6 1/4	SOLIDEAL PON 555	■		■			10.0	5.0	8.9	2270	1850	2015	1700	1640	1345	2270	1850	1610	1215	3415
6 1/2"																				
10 X 4 X 6 1/2	SOLIDEAL PON 775	■		■		■	10.0	4.0	9.0	1720	1410	1530	1290	1245	1025	1720	1410	1225	915	2590
10 X 4 X 6 1/2	SOLIDEAL PON 555	■		■	■		9.9	4.0	9.0	1720	1410	1530	1290	1245	1025	1720	1410	1225	915	2590
10 X 4 3/4 X 6 1/2	SOLIDEAL PON 555	■		■			10.0	4.8	9.0	2095	1720	1865	1565	1520	1245	2095	1720	1490	1125	3155
10 X 5 X 6 1/2	SOLIDEAL PON 775	■		■		■	10.0	5.0	9.0	2225	1830	1995	1675	1620	1335	2225	1830	1600	1200	3375
10 X 5 X 6 1/2	SOLIDEAL PON 550		■	■	■		9.9	5.0	9.0	2225	1830	1995	1675	1620	1335	2225	1830	1600	1200	3375
10 X 5 X 6 1/2	SOLIDEAL PON 555	■		■	■		9.9	5.0	9.0	2225	1830	1995	1675	1620	1335	2225	1830	1600	1200	3375
10 1/2 X 5 X 6 1/2	SOLIDEAL PON 775	■		■		■	10.5	5.0	9.3	2360	1940	2115	1785	1720	1410	2360	1940	1700	1270	3585
10 1/2 X 5 X 6 1/2	SOLIDEAL PON 555	■		■	■		10.5	5.0	9.3	2360	1940	2115	1785	1720	1410	2360	1940	1700	1270	3585
10 1/2 X 6 X 6 1/2	SOLIDEAL PON 555	■		■			10.5	6.0	9.3	2955	2425	2625	2205	2140	1755	2955	2425	2095	1575	4440
8"																				
12 X 4 X 8	SOLIDEAL PON 555	■		■			12.0	4.0	10.8	1995	1640	1785	1500	1455	1190	1995	1640	1995	1070	3010
12 X 4 1/2 X 8	SOLIDEAL PON 775	■		■		■	12.0	4.5	10.8	2295	1885	2050	1720	1665	1365	2295	1885	1640	1235	3470
12 X 4 1/2 X 8	SOLIDEAL PON 555	■		■	■		12.0	4.5	10.8	2295	1885	2050	1720	1665	1365	2295	1885	1640	1235	3470
12 X 5 X 8	SOLIDEAL PON 555	■		■			12.0	5.0	10.8	2625	2160	2350	1960	1905	1565	2625	2160	1875	1400	3955
12 X 5 1/2 X 8	SOLIDEAL PON 555	■		■	■		12.0	5.5	10.8	2955	2425	2635	2215	2140	1755	2955	2425	2105	1575	4455
13 X 4 1/2 X 8	SOLIDEAL PON 555	■		■			13.0	4.5	11.5	2470	2030	2205	1850	1795	1475	2470	2030	1765	1325	3715
13 1/2 X 4 1/2 X 8	SOLIDEAL PON 555	■		■			13.5	4.5	11.8	2535	2070	2260	1895	1840	1510	2535	2070	1810	1355	3815
13 1/2 X 5 1/2 X 8	SOLIDEAL PON 775	■		■		■	13.5	5.5	11.9	3330	2735	2965	2490	2415	1975	3330	2735	2380	1785	5025
13 1/2 X 5 1/2 X 8	SOLIDEAL PON 550		■	■	■		13.5	5.5	11.9	3330	2735	2965	2490	2415	1975	3330	2735	2380	1785	5025
13 1/2 X 5 1/2 X 8	SOLIDEAL PON 555	■		■	■		13.5	5.5	11.8	3330	2735	2965	2490	2415	1975	3330	2735	2380	1785	5025

Blue sections represent hub size

PRESS-ON TIRES

TECHNICAL DATA

TIRE SIZE ¹	BRAND	TREAD PATTERN		RUBBER COMPOUND			ACTUAL TIRE DIMENSIONS			LOAD CAPACITY (lb.) ²										
		Smooth	Traction	Black	Non-marking	NMAS	Overall diameter (in.)	Overall width (in.)	Replacement overall diameter ⁵ (in.)	Counterbalanced lift trucks						Other vehicles ³				Static 0 mph
										Up to 6 mph		Up to 10 mph		Up to 16 mph		4 mph	6 mph	10 mph	16 mph	
										Load wheel	Steering wheel	Load wheel	Steering wheel	Load wheel	Steering wheel					
14 X 4 1/2 X 8	SOLIDEAL PON 775	■		■		■	14.1	4.5	12.2	2580	2115	2305	1930	1875	1530	2580	2115	1830	1380	3880
14 X 4 1/2 X 8	SOLIDEAL PON 550		■	■	■		14.0	4.5	12.3	2580	2115	2305	1930	1875	1530	2580	2115	1830	1380	3880
14 X 4 1/2 X 8	SOLIDEAL PON 555	■		■	■		13.9	4.5	12.2	2580	2115	2305	1930	1875	1530	2580	2115	1830	1380	3880
10"																				
14 X 5 X 10	SOLIDEAL PON 775	■		■		■	14.1	5.0	12.9	2945	2415	2635	2205	2140	1755	2945	2415	2105	1575	4455
14 X 5 X 10	SOLIDEAL PON 550		■	■	■		14.0	5.0	12.9	2945	2415	2635	2205	2140	1755	2945	2415	2105	1575	4455
14 X 5 X 10	SOLIDEAL PON 555	■		■	■		13.9	5.0	12.9	2945	2415	2635	2205	2140	1755	2945	2415	2105	1575	4455
15 1/2 X 5 X 10	SOLIDEAL PON 550		■	■			15.6	5.0	13.9	3240	2670	2900	2425	2360	1930	3240	2670	2315	1740	4905
15 1/2 X 6 X 10	SOLIDEAL PON 555	■		■			15.6	5.0	13.9	4125	3375	3670	3085	2985	2445	4125	3375	2930	2070	6240
10 1/2"																				
16 X 5 X 10 1/2	SOLIDEAL PON 775	■		■		■	16.0	5.0	14.4	3330	2735	2965	2490	2415	1975	3330	2735	2380	1775	5015
16 X 5 X 10 1/2	SOLIDEAL PON 550		■	■	■		16.0	5.0	14.4	3330	2735	2965	2490	2415	1975	3330	2735	2380	1775	5015
16 X 5 X 10 1/2	SOLIDEAL PON 555	■		■	■		15.9	5.0	14.3	3330	2735	2965	2490	2415	1975	3330	2735	2380	1775	5015
16 X 6 X 10 1/2	SOLIDEAL PON 775	■		■		■	16.0	6.0	14.4	4210	3460	3770	3165	3065	2515	4210	3460	3000	2250	6340
16 X 6 X 10 1/2	SOLIDEAL PON 550		■	■	■		16.0	6.0	14.4	4210	3460	3770	3165	3065	2515	4210	3460	3000	2250	6340
16 X 6 X 10 1/2	SOLIDEAL PON 555	■		■	■		15.9	6.0	14.3	4210	3460	3770	3165	3065	2515	4210	3460	3000	2250	6340
16 X 7 X 10 1/2	SOLIDEAL PON 775	■		■		■	16.0	7.0	14.4	5125	4210	4565	3835	3715	3040	5125	4210	3660	2745	7715
16 X 7 X 10 1/2	SOLIDEAL PON 550		■	■	■		16.2	7.0	14.5	5125	4210	4565	3835	3715	3040	5125	4210	3660	2745	7715
16 X 7 X 10 1/2	SOLIDEAL PON 555	■		■	■		16.0	7.0	14.4	5125	4210	4565	3835	3715	3040	5125	4210	3660	2745	7715
16 X 7 X 10 1/2	SOLIDEAL PON 552		■*	■			-	-	-	5125	4210	4565	3835	3715	3040	5125	4210	3660	2745	7715
11 1/4"																				
15 X 4 X 11 1/4	SOLIDEAL PON 555	■		■	■		15.0	4.0	13.9	2350	1930	2095	1765	1710	1400	2350	1930	1675	1255	3540
15 X 5 X 11 1/4	SOLIDEAL PON 775	■		■		■	15.1	5.0	14.0	3065	2515	2735	2295	2225	1830	3065	2515	2185	1640	4630
15 X 5 X 11 1/4	SOLIDEAL PON 550		■	■	■		15.0	5.0	14.0	3065	2515	2735	2295	2225	1830	3065	2515	2185	1640	4630
15 X 5 X 11 1/4	SOLIDEAL PON 555	■		■	■		14.9	5.0	13.9	3065	2515	2735	2295	2225	1830	3065	2515	2185	1640	4630
15 X 6 X 11 1/4	SOLIDEAL PON 555	■		■			15.0	6.0	13.9	3780	3110	3375	2835	2745	2250	3780	3110	2700	2030	5720

Blue sections represent hub size

PRESS-ON TIRES

TECHNICAL DATA

TIRE SIZE ¹	BRAND	TREAD PATTERN		RUBBER COMPOUND			ACTUAL TIRE DIMENSIONS			LOAD CAPACITY (lb.) ²										
		Smooth	Traction	Black	Non-marking	NMA5	Overall diameter (in.)	Overall width (in.)	Replacement overall diameter ⁵ (in.)	Counterbalanced lift trucks						Other vehicles ³				Static 0 mph
										Up to 6 mph		Up to 10 mph		Up to 16 mph		4 mph	6 mph	10 mph	16 mph	
										Load wheel	Steering wheel	Load wheel	Steering wheel	Load wheel	Steering wheel					
16 1/4 X 5 X 11 1/4	SOLIDEAL PON 775	■		■		■	16.3	5.0	14.8	3375	2755	3000	2525	2435	1995	3375	2755	2405	1795	5070
16 1/4 X 5 X 11 1/4	SOLIDEAL PON 550		■	■	■		16.3	5.0	14.8	3375	2755	3000	2525	2435	1995	3375	2755	2405	1795	5070
16 1/4 X 5 X 11 1/4	SOLIDEAL PON 555	■		■	■		16.1	5.0	14.7	3375	2755	3000	2525	2435	1995	3375	2755	2405	1795	5070
16 1/4 X 6 X 11 1/4	SOLIDEAL PON 775	■		■		■	16.3	6.0	14.8	4235	3485	3780	3175	3075	2515	4235	3485	3020	2260	6370
16 1/4 X 6 X 11 1/4	SOLIDEAL PON 550		■	■	■		16.2	6.0	14.7	4235	3485	3780	3175	3075	2515	4235	3485	3020	2260	6370
16 1/4 X 6 X 11 1/4	SOLIDEAL PON 555	■		■	■		16.1	6.0	14.7	4235	3485	3780	3175	3075	2515	4235	3485	3020	2260	6370
16 1/4 X 7 X 11 1/4	SOLIDEAL PON 775	■		■		■	16.3	7.0	14.8	5125	4190	4540	3825	3705	3040	5125	4190	3640	2745	7715
16 1/4 X 7 X 11 1/4	SOLIDEAL PON 550		■	■	■		16.3	7.0	14.8	5125	4190	4540	3825	3705	3040	5125	4190	3640	2745	7715
16 1/4 X 7 X 11 1/4	SOLIDEAL PON 555	■		■	■		16.3	7.0	14.8	5125	4190	4540	3825	3705	3040	5125	4190	3640	2745	7715
16 1/4 X 8 X 11 1/4	SOLIDEAL PON 555	■		■			16.3	8.0	14.8	5985	4905	5335	4475	4330	3560	5975	4905	4265	3195	9015
12 1/8"																				
17 X 5 X 12 1/8	SOLIDEAL PON 555	■		■			17.0	5.0	15.6	3460	2845	3085	2600	2525	2060	3460	2845	2470	1865	5245
17 X 6 X 12 1/8	SOLIDEAL PON 550		■	■			17.0	5.0	15.6	4365	3595	3900	3275	3165	2600	4365	3595	3110	2350	6615
18 X 5 X 12 1/8	SOLIDEAL PON 550		■	■	■		18.2	5.0	16.3	3615	2975	3240	2710	2635	2160	3615	2975	2580	1940	5465
18 X 5 X 12 1/8	SOLIDEAL PON 555	■		■	■		18.0	5.0	16.2	3615	2975	3240	2710	2635	2160	3615	2975	2580	1940	5465
18 X 6 X 12 1/8	SOLIDEAL PON 775	■		■		■	18.0	6.0	16.2	4630	3790	4125	3470	3360	2755	4630	3790	3305	2470	6955
18 X 6 X 12 1/8	SOLIDEAL PON 550		■	■	■		18.0	6.0	16.3	4630	3790	4125	3470	3360	2755	4630	3790	3305	2470	6955
18 X 6 X 12 1/8	SOLIDEAL PON 555	■		■	■		17.8	6.0	16.2	4630	3790	4125	3470	3360	2755	4630	3790	3305	2470	6955
18 X 7 X 12 1/8	SOLIDEAL PON 775	■		■		■	18.1	7.0	16.3	5620	4630	5025	4210	4090	3350	5620	4630	4010	3020	8500
18 X 7 X 12 1/8	SOLIDEAL PON 550		■	■	■		18.0	7.0	16.3	5620	4630	5025	4210	4090	3350	5620	4630	4010	3020	8500
18 X 7 X 12 1/8	SOLIDEAL PON 555	■		■	■		18.0	7.0	16.2	5620	4630	5025	4210	4090	3350	5620	4630	4010	3020	8500
18 X 8 X 12 1/8	SOLIDEAL PON 775	■		■		■	18.0	8.0	16.2	6615	5455	5910	4960	4805	3945	6615	5455	4740	3540	9985
18 X 8 X 12 1/8	SOLIDEAL PON 550		■	■	■		18.0	8.0	16.3	6615	5455	5910	4960	4805	3945	6615	5455	4740	3540	9985
18 X 8 X 12 1/8	SOLIDEAL PON 555	■		■	■		17.8	8.0	16.2	6615	5455	5910	4960	4805	3945	6615	5455	4740	3540	9985
18 X 9 X 12 1/8	SOLIDEAL PON 550		■	■	■		18.0	9.0	16.2	7605	6285	6810	5730	5535	4540	7605	6285	5455	4090	11530
18 X 9 X 12 1/8	SOLIDEAL PON 555	■		■	■		17.8	9.0	16.1	7605	6285	6810	5730	5535	4540	7605	6285	5455	4090	11530

Blue sections represent hub size

PRESS-ON TIRES

TECHNICAL DATA

TIRE SIZE ¹	BRAND	TREAD PATTERN		RUBBER COMPOUND			ACTUAL TIRE DIMENSIONS			LOAD CAPACITY (lb.) ²										
		Smooth	Traction	Black	Non-marking	NMAS	Overall diameter (in.)	Overall width (in.)	Replacement overall diameter ⁵ (in.)	Counterbalanced lift trucks						Other vehicles ³				Static 0 mph
										Up to 6 mph		Up to 10 mph		Up to 16 mph		4 mph	6 mph	10 mph	16 mph	
										Load wheel	Steering wheel	Load wheel	Steering wheel	Load wheel	Steering wheel					
15"																				
21 X 6 X 15	SOLIDEAL PON 550		■	■			21.2	6.0	19.3	5180	4255	4630	3890	3770	3085	5180	4255	3705	2765	7805
21 X 7 X 15	SOLIDEAL PON 775	■		■		■	21.1	7.0	19.2	6340	5180	5645	4740	4595	3770	6340	5180	4520	3395	9555
21 X 7 X 15	SOLIDEAL PON 550		■	■	■		21.0	7.0	19.2	6340	5180	5645	4740	4595	3770	6340	5180	4520	3395	9555
21 X 7 X 15	SOLIDEAL PON 555	■		■	■		20.8	7.0	19.3	6340	5180	5645	4740	4595	3770	6340	5180	4520	3395	9555
21 X 8 X 15	SOLIDEAL PON 775	■		■		■	21.0	8.0	19.2	7440	6120	6670	5600	5410	4440	7440	6120	5345	3990	11245
21 X 8 X 15	SOLIDEAL PON 550		■	■	■		21.0	8.0	19.2	7440	6120	6670	5600	5410	4440	7440	6120	5345	3990	11245
21 X 8 X 15	SOLIDEAL PON 555	■		■	■		20.8	8.0	19.2	7440	6120	6670	5600	5410	4440	7440	6120	5345	3990	11245
21 X 9 X 15	SOLIDEAL PON 775	■		■		■	21.0	9.0	19.2	8600	7055	7660	6435	6240	5115	8600	7055	6120	4610	12985
21 X 9 X 15	SOLIDEAL PON 550		■	■	■		21.0	9.0	19.3	8600	7055	7660	6435	6240	5115	8600	7055	6120	4610	12985
21 X 9 X 15	SOLIDEAL PON 555	■		■	■		20.9	9.1	19.2	8600	7055	7660	6435	6240	5115	8600	7055	6120	4610	12985
16"																				
20 X 8 X 16	SOLIDEAL PON 555	■		■			20.1	8.0	18.9	6635	5445	5920	4970	4815	3945	6635	5445	4740	3550	10020
20 X 8 X 16	SOLIDEAL PON 550		■	■			20.1	8.0	18.9	6635	5445	5920	4970	4815	3945	6635	5445	4740	3550	10020
20 X 9 X 16	SOLIDEAL PON 555	■		■			20.0	9.0	18.9	7595	6240	6780	5690	5510	4520	7595	6240	5425	4070	11465
22 X 6 X 16	SOLIDEAL PON 550		■	■	■		22.2	6.0	20.3	5400	4410	4805	4035	3900	3195	5400	4410	3835	2865	8090
22 X 6 X 16	SOLIDEAL PON 555	■		■			22.0	6.0	20.2	5400	4410	4805	4035	3900	3195	5400	4410	3835	2865	8090
22 X 7 X 16	SOLIDEAL PON 550		■	■	■		22.0	7.0	20.3	6560	5400	5840	4915	4760	3900	6560	5400	4685	3515	9910
22 X 7 X 16	SOLIDEAL PON 555	■		■	■		21.9	7.0	20.2	6560	5400	5840	4915	4760	3900	6560	5400	4685	3515	9910
22 X 8 X 16	SOLIDEAL PON 775	■		■		■	22.1	8.0	20.2	7715	6340	6900	5785	5610	4595	7715	6340	5510	4135	11650
22 X 8 X 16	SOLIDEAL PON 550		■	■	■		22.0	8.0	20.3	7715	6340	6900	5785	5610	4595	7715	6340	5510	4135	11650
22 X 8 X 16	SOLIDEAL PON 555	■		■	■		21.9	8.0	20.2	7715	6340	6900	5785	5610	4595	7715	6340	5510	4135	11650
22 X 9 X 16	SOLIDEAL PON 775	■		■		■	22.0	9.0	20.2	8930	7330	7935	6670	6460	5290	8930	7330	6340	4785	13470
22 X 9 X 16	SOLIDEAL PON 550		■	■	■		22.0	9.0	20.3	8930	7330	7935	6670	6460	5290	8930	7330	6340	4785	13470
22 X 9 X 16	SOLIDEAL PON 555	■		■	■		22.0	9.1	20.2	8930	7330	7935	6670	6460	5290	8930	7330	6340	4785	13470

Blue sections represent hub size

PRESS-ON TIRES

TECHNICAL DATA

TIRE SIZE ¹	BRAND	TREAD PATTERN		RUBBER COMPOUND			ACTUAL TIRE DIMENSIONS			LOAD CAPACITY (lb.) ²											
		Smooth	Traction	Black	Non-marking	NMAS	Overall diameter (in.)	Overall width (in.)	Replacement overall diameter ⁵ (in.)	Counterbalanced lift trucks						Other vehicles ³				Static 0 mph	
										Up to 6 mph		Up to 10 mph		Up to 16 mph		4 mph	6 mph	10 mph	16 mph		
										Load wheel	Steering wheel	Load wheel	Steering wheel	Load wheel	Steering wheel						
22 X 10 X 16	SOLIDEAL PON 775	■		■		■	22.0	10.0	20.2	10085	8265	8995	7550	7310	5995	10085	8265	7165	5400	15210	
22 X 10 X 16	SOLIDEAL PON 550		■	■	■		22.2	10.0	20.3	10085	8265	8995	7550	7310	5995	10085	8265	7165	5400	15210	
22 X 10 X 16	SOLIDEAL PON 555	■		■	■		21.9	10.0	20.2	10085	8265	8995	7550	7310	5995	10085	8265	7165	5400	15210	
22 X 12 X 16	SOLIDEAL PON 775	■		■		■	22.0	12.0	20.3	12400	10195	11090	9315	9015	7385	12400	10195	8875	6660	18770	
22 X 12 X 16	SOLIDEAL PON 550		■	■	■		22.0	12.0	20.3	12400	10195	11090	9315	9015	7385	12400	10195	8875	6660	18770	
22 X 12 X 16	SOLIDEAL PON 555	■		■	■		21.9	12.0	20.2	12400	10195	11090	9315	9015	7385	12400	10195	8875	6660	18770	
22 X 14 X 16	SOLIDEAL PON 555	■		■	■		21.9	14.0	20.2	14770	12135	13185	11080	10725	8795	14770	12135	10550	7925	22335	
22 X 16 X 16	SOLIDEAL PON 555	■		■	■		22.0	16.0	20.2	17075	14020	15245	12810	12400	10165	17075	14020	12190	9160	25825	
17 3/4"																					
22 X 6 X 17 3/4	SOLIDEAL PON 555	■		■			22.0	6.0	20.8	5170	4245	4610	3880	3750	3075	5170	4245	3695	2765	7815	
22 X 7 X 17 3/4	SOLIDEAL PON 555	■		■			22.0	7.0	20.8	6240	5115	5555	4675	4520	3705	6230	5115	4440	3340	9405	
22 X 8 X 17 3/4	SOLIDEAL PON 555	■		■			22.0	8.0	20.8	7220	5930	6450	5410	5245	4300	7220	5930	5160	3880	10925	
20"																					
26 X 6 X 20	SOLIDEAL PON 555	■		■			26.1	6.0	24.3	6120	5015	5445	4575	4420	3625	6120	5015	4355	3250	9170	
26 X 7 X 20	SOLIDEAL PON 555	■		■			-	-	-	7440	6120	6615	5565	5390	4420	7440	6120	5290	3980	11220	
26 X 8 X 20	SOLIDEAL PON 555	■		■			26.1	7.0	24.3	8765	7220	7825	6570	6360	5215	8765	7220	6285	4685	13215	
22"																					
28 X 10 X 22	SOLIDEAL PON 550		■	■	■		28.0	10.0	26.3	12060	9900	10760	9040	8750	7175	12060	9900	8610	6460	18210	
28 X 10 X 22	SOLIDEAL PON 555	■		■	■		27.9	10.0	26.2	12060	9900	10760	9040	8750	7175	12060	9900	8610	6460	18210	
28 X 12 X 22	SOLIDEAL PON 775	■		■		■	28.0	12.0	26.2	14860	12215	13270	11155	10805	8850	14860	12215	10625	7970	22465	
28 X 12 X 22	SOLIDEAL PON 550		■	■	■		28.1	12.0	26.3	14860	12215	13270	11155	10805	8850	14860	12215	10625	7970	22465	
28 X 12 X 22	SOLIDEAL PON 555	■		■	■		28.0	12.0	26.2	14860	12215	13270	11155	10805	8850	14860	12215	10625	7970	22465	
28 X 14 X 22	SOLIDEAL PON 555	■		■			27.8	14.0	26.3	17680	14530	15785	13270	12830	10540	17680	14530	12610	9480	26730	
28 X 14 X 22	SOLIDEAL PON 552		■*	■			28.2	14.0	26.3	17680	14530	15785	13270	12830	10540	17680	14530	12610	9480	26730	
28 X 16 X 22	SOLIDEAL PON 555	■		■			28.0	16.0	26.2	20435	16800	18255	15320	14835	12170	20435	16800	14595	10970	30900	
33 X 13 3/4 X 22	SOLIDEAL PON 555	■		■	■		33.3	13.8	29.8	20060	16415	17460	14330	14065	11465	20845	14850	13030	10415	30290	
33 X 14 X 22	SOLIDEAL PON 775	■		■		■	33.1	14.0	29.6	20060	16415	17460	14330	14065	11465	20845	14850	13030	10415	30290	

Blue sections represent hub size

PRESS-ON TIRES

TECHNICAL DATA

TIRE SIZE ¹	BRAND	TREAD PATTERN		RUBBER COMPOUND			ACTUAL TIRE DIMENSIONS			LOAD CAPACITY (lb.) ²										
		Smooth	Traction	Black	Non-marking	NMA5	Overall diameter (in.)	Overall width (in.)	Replacement overall diameter ⁵ (in.)	Counterbalanced lift trucks						Other vehicles ³				Static 0 mph
										Up to 6 mph		Up to 10 mph		Up to 16 mph		4 mph	6 mph	10 mph	16 mph	
										Load wheel	Steering wheel	Load wheel	Steering wheel	Load wheel	Steering wheel					
33 X 16 X 22	SOLIDEAL PON 775	■		■		■	33.1	16.0	30.0	23975	19655	20900	17150	16845	13725	24955	17780	15600	12480	36265
140																				
250 / 130 - 140	SOLIDEAL PON 555	■		■			9.8	5.1	8.6	2350	1930	2095	1765	1710	1400	2350	1930	1675	1255	3550
170																				
250 / 80 - 170	SOLIDEAL PON 555	■		■			9.8	3.1	9.0	1365	1125	1225	1015	-	-	1365	1125	970	740	2060
250 / 105 - 170	SOLIDEAL PON 555	■		■			9.8	4.1	9.0	1730	1420	1545	1300	1255	1025	1730	1420	1235	925	2610
203																				
300 / 90 - 203	SOLIDEAL PON 555	■		■			11.8	3.5	10.7	1840	1510	1640	1380	-	-	2195	1445	1310	990	2780
220																				
365 / 160 - 220	SOLIDEAL PON 555	■		■			14.4	6.3	12.6	4145	3405	3705	3110	3010	2470	4145	3405	2965	2225	6260
240																				
300 / 75 - 240	SOLIDEAL PON 555	■		■			11.9	3.0	11.2	1380	1135	1235	1035	-	-	1380	1135	980	750	2085
270																				
360 / 60 - 270	SOLIDEAL PON 555	■		■			14.3	2.4	13.2	1235	1015	1100	915	-	-	1465	960	880	660	1865
360 / 85 - 270	SOLIDEAL PON 555	■		■			14.3	3.3	13.2	1940	1585	1730	1445	-	-	2305	1520	1380	1045	2920
280																				
350 / 90 - 280	SOLIDEAL PON 555	■		■			13.8	3.5	13.0	1995	1630	1775	1490	-	-	2360	1555	1420	1070	3000
305																				
415 / 75 - 305	SOLIDEAL PON 555	■		■			16.4	3.0	15.1	1820	1490	1610	1345	-	-	2150	1420	1290	980	2735
415 / 90 - 305	SOLIDEAL PON 555	■		■			16.4	3.5	15.1	2360	1930	2095	1755	-	-	2790	1840	1675	1270	3550
415 / 100 - 305	SOLIDEAL PON 555	■		■			16.4	3.9	15.1	2460	2015	2205	1840	1785	1465	2460	2015	1755	1310	3715
370																				
520 / 120 - 370	SOLIDEAL PON 555	■		■			20.5	4.7	18.7	3695	3030	3295	2765	2680	2195	3695	3030	2635	1975	5555
550 / 150 - 370	SOLIDEAL PON 555	■		■			21.8	5.9	19.5	5190	4255	4620	3880	3760	3075	5170	4255	3695	2780	7815
410																				
550 / 120 - 410	SOLIDEAL PON 555	■		■			21.7	4.7	20.0	3860	3175	3450	2900	2800	2295	3860	3175	2755	2070	5830
645 / 300 - 410	SOLIDEAL PON 555	■		■			-	-	-	13360	10935	11630	9545	9195	7630	13880	9890	8675	6945	20185

Blue sections represent hub size

PRESS-ON TIRES

TECHNICAL DATA

TIRE SIZE ¹	BRAND	TREAD PATTERN		RUBBER COMPOUND			ACTUAL TIRE DIMENSIONS			LOAD CAPACITY (lb.) ²										
		Smooth	Traction	Black	Non-marking	NMA5	Overall diameter (in.)	Overall width (in.)	Replacement overall diameter ⁵ (in.)	Counterbalanced lift trucks						Other vehicles ³				Static 0 mph
										Up to 6 mph		Up to 10 mph		Up to 16 mph		4 mph	6 mph	10 mph	16 mph	
										Load wheel	Steering wheel	Load wheel	Steering wheel	Load wheel	Steering wheel					
480																				
660 / 250 - 480	SOLIDEAL PON 555	■		■			25.8	9.8	23.9	10540	8620	9170	7530	7255	6030	10945	7805	6845	5480	15915
660 / 250 - 480	SOLIDEAL LUG ERP		■	■			26.0	9.8	23.8	10540	8620	9170	7530	7255	6030	10945	7805	6845	5480	15915
660 / 250 - 480	SOLIDEAL PON 555	■		■			26.0	11.0	23.8	12050	9875	10505	8630	8465	6900	12545	8940	7835	6270	18230

Blue sections represent hub size

Remarks

(1) Tolerances on wheel diameter

Code designated sizes (inch sizes): nominal rim diameter +0.005"/-0"

Metric sizes (mm sizes): h11 according to ISO/R286

Surface roughness: Ra < 6.3 μm

Chamfer: 5 mm wide @ 30°

(2) The speeds quoted in the table are the maximum speeds of the unloaded vehicle. An increase in load capacity for lower speeds is not permitted.

(3) This category includes:

- Drive and steer wheels on other than counterbalanced forklift trucks;
- Wheels and mobile cranes;
- Free-rolling wheels on trailers, up to a maximum distance of 2000 m per journey.

For longer distances and for wheels fitted to rotary plants, please consult the technical department.

(4) For Roll On/Roll Off trailers values of category "other vehicles" at appropriate speed should be taken.

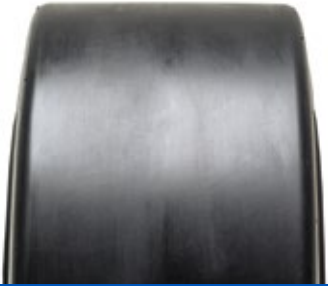
(5) The tire is considered worn out when the outside diameter is equal or smaller than the replacement overall diameter.

All specifications for non-marking tires are the same as the equivalent standard black tire.

This document contains technical data of all products globally. It is possible that certain items are not sold in your region.

Please contact your local sales representative to check tire availability in your region.

PRESS-ON TIRES (PON)



SOLIDEAL
PON 775



SOLIDEAL
PON 555



SOLIDEAL
PON 550



SOLIDEAL
PON 552 MAGNUM SEMI



SOLIDEAL
PON 775 NMAS



SOLIDEAL
PON 555 NM



SOLIDEAL
PON 550 NM

PRESS-ON TIRES

TECHNICAL DATA

TIRE SIZE ¹	BRAND	TREAD PATTERN		RUBBER COMPOUND			ACTUAL TIRE DIMENSIONS			LOAD CAPACITY (lb.) ²										
		Smooth	Traction	Black	Non-marking	NMAS	Overall diameter (in.)	Overall width (in.)	Replacement overall diameter ⁵ (in.)	Counterbalanced lift trucks						Other vehicles ³				Static 0 mph
										Up to 6 mph		Up to 10 mph		Up to 16 mph		4 mph	6 mph	10 mph	16 mph	
										Load wheel	Steering wheel	Load wheel	Steering wheel	Load wheel	Steering wheel					
14 X 4 1/2 X 8	SOLIDEAL PON 775	■		■		■	14.1	4.5	12.2	2580	2115	2305	1930	1875	1530	2580	2115	1830	1380	3880
14 X 4 1/2 X 8	SOLIDEAL PON 550		■	■	■		14.0	4.5	12.3	2580	2115	2305	1930	1875	1530	2580	2115	1830	1380	3880
14 X 4 1/2 X 8	SOLIDEAL PON 555	■		■	■		13.9	4.5	12.2	2580	2115	2305	1930	1875	1530	2580	2115	1830	1380	3880
10"																				
14 X 5 X 10	SOLIDEAL PON 775	■		■		■	14.1	5.0	12.9	2945	2415	2635	2205	2140	1755	2945	2415	2105	1575	4455
14 X 5 X 10	SOLIDEAL PON 550		■	■	■		14.0	5.0	12.9	2945	2415	2635	2205	2140	1755	2945	2415	2105	1575	4455
14 X 5 X 10	SOLIDEAL PON 555	■		■	■		13.9	5.0	12.9	2945	2415	2635	2205	2140	1755	2945	2415	2105	1575	4455
15 1/2 X 5 X 10	SOLIDEAL PON 550		■	■			15.6	5.0	13.9	3240	2670	2900	2425	2360	1930	3240	2670	2315	1740	4905
15 1/2 X 6 X 10	SOLIDEAL PON 555	■		■			15.6	5.0	13.9	4125	3375	3670	3085	2985	2445	4125	3375	2930	2070	6240
10 1/2"																				
16 X 5 X 10 1/2	SOLIDEAL PON 775	■		■		■	16.0	5.0	14.4	3330	2735	2965	2490	2415	1975	3330	2735	2380	1775	5015
16 X 5 X 10 1/2	SOLIDEAL PON 550		■	■	■		16.0	5.0	14.4	3330	2735	2965	2490	2415	1975	3330	2735	2380	1775	5015
16 X 5 X 10 1/2	SOLIDEAL PON 555	■		■	■		15.9	5.0	14.3	3330	2735	2965	2490	2415	1975	3330	2735	2380	1775	5015
16 X 6 X 10 1/2	SOLIDEAL PON 775	■		■		■	16.0	6.0	14.4	4210	3460	3770	3165	3065	2515	4210	3460	3000	2250	6340
16 X 6 X 10 1/2	SOLIDEAL PON 550		■	■	■		16.0	6.0	14.4	4210	3460	3770	3165	3065	2515	4210	3460	3000	2250	6340
16 X 6 X 10 1/2	SOLIDEAL PON 555	■		■	■		15.9	6.0	14.3	4210	3460	3770	3165	3065	2515	4210	3460	3000	2250	6340
16 X 7 X 10 1/2	SOLIDEAL PON 775	■		■		■	16.0	7.0	14.4	5125	4210	4565	3835	3715	3040	5125	4210	3660	2745	7715
16 X 7 X 10 1/2	SOLIDEAL PON 550		■	■	■		16.2	7.0	14.5	5125	4210	4565	3835	3715	3040	5125	4210	3660	2745	7715
16 X 7 X 10 1/2	SOLIDEAL PON 555	■		■	■		16.0	7.0	14.4	5125	4210	4565	3835	3715	3040	5125	4210	3660	2745	7715
16 X 7 X 10 1/2	SOLIDEAL PON 552		■*	■			-	-	-	5125	4210	4565	3835	3715	3040	5125	4210	3660	2745	7715
11 1/4"																				
15 X 4 X 11 1/4	SOLIDEAL PON 555	■		■	■		15.0	4.0	13.9	2350	1930	2095	1765	1710	1400	2350	1930	1675	1255	3540
15 X 5 X 11 1/4	SOLIDEAL PON 775	■		■		■	15.1	5.0	14.0	3065	2515	2735	2295	2225	1830	3065	2515	2185	1640	4630
15 X 5 X 11 1/4	SOLIDEAL PON 550		■	■	■		15.0	5.0	14.0	3065	2515	2735	2295	2225	1830	3065	2515	2185	1640	4630
15 X 5 X 11 1/4	SOLIDEAL PON 555	■		■	■		14.9	5.0	13.9	3065	2515	2735	2295	2225	1830	3065	2515	2185	1640	4630
15 X 6 X 11 1/4	SOLIDEAL PON 555	■		■			15.0	6.0	13.9	3780	3110	3375	2835	2745	2250	3780	3110	2700	2030	5720

Blue sections represent hub size

PRESS-ON TIRES

TECHNICAL DATA

TIRE SIZE ¹	BRAND	TREAD PATTERN		RUBBER COMPOUND			ACTUAL TIRE DIMENSIONS			LOAD CAPACITY (lb.) ²										
		Smooth	Traction	Black	Non-marking	NMAS	Overall diameter (in.)	Overall width (in.)	Replacement overall diameter ⁵ (in.)	Counterbalanced lift trucks						Other vehicles ³				Static 0 mph
										Up to 6 mph		Up to 10 mph		Up to 16 mph		4 mph	6 mph	10 mph	16 mph	
										Load wheel	Steering wheel	Load wheel	Steering wheel	Load wheel	Steering wheel					
16 1/4 X 5 X 11 1/4	SOLIDEAL PON 775	■		■		■	16.3	5.0	14.8	3375	2755	3000	2525	2435	1995	3375	2755	2405	1795	5070
16 1/4 X 5 X 11 1/4	SOLIDEAL PON 550		■	■	■		16.3	5.0	14.8	3375	2755	3000	2525	2435	1995	3375	2755	2405	1795	5070
16 1/4 X 5 X 11 1/4	SOLIDEAL PON 555	■		■	■		16.1	5.0	14.7	3375	2755	3000	2525	2435	1995	3375	2755	2405	1795	5070
16 1/4 X 6 X 11 1/4	SOLIDEAL PON 775	■		■		■	16.3	6.0	14.8	4235	3485	3780	3175	3075	2515	4235	3485	3020	2260	6370
16 1/4 X 6 X 11 1/4	SOLIDEAL PON 550		■	■	■		16.2	6.0	14.7	4235	3485	3780	3175	3075	2515	4235	3485	3020	2260	6370
16 1/4 X 6 X 11 1/4	SOLIDEAL PON 555	■		■	■		16.1	6.0	14.7	4235	3485	3780	3175	3075	2515	4235	3485	3020	2260	6370
16 1/4 X 7 X 11 1/4	SOLIDEAL PON 775	■		■		■	16.3	7.0	14.8	5125	4190	4540	3825	3705	3040	5125	4190	3640	2745	7715
16 1/4 X 7 X 11 1/4	SOLIDEAL PON 550		■	■	■		16.3	7.0	14.8	5125	4190	4540	3825	3705	3040	5125	4190	3640	2745	7715
16 1/4 X 7 X 11 1/4	SOLIDEAL PON 555	■		■	■		16.3	7.0	14.8	5125	4190	4540	3825	3705	3040	5125	4190	3640	2745	7715
16 1/4 X 8 X 11 1/4	SOLIDEAL PON 555	■		■			16.3	8.0	14.8	5985	4905	5335	4475	4330	3560	5975	4905	4265	3195	9015
12 1/8"																				
17 X 5 X 12 1/8	SOLIDEAL PON 555	■		■			17.0	5.0	15.6	3460	2845	3085	2600	2525	2060	3460	2845	2470	1865	5245
17 X 6 X 12 1/8	SOLIDEAL PON 550		■	■			17.0	5.0	15.6	4365	3595	3900	3275	3165	2600	4365	3595	3110	2350	6615
18 X 5 X 12 1/8	SOLIDEAL PON 550		■	■	■		18.2	5.0	16.3	3615	2975	3240	2710	2635	2160	3615	2975	2580	1940	5465
18 X 5 X 12 1/8	SOLIDEAL PON 555	■		■	■		18.0	5.0	16.2	3615	2975	3240	2710	2635	2160	3615	2975	2580	1940	5465
18 X 6 X 12 1/8	SOLIDEAL PON 775	■		■		■	18.0	6.0	16.2	4630	3790	4125	3470	3360	2755	4630	3790	3305	2470	6955
18 X 6 X 12 1/8	SOLIDEAL PON 550		■	■	■		18.0	6.0	16.3	4630	3790	4125	3470	3360	2755	4630	3790	3305	2470	6955
18 X 6 X 12 1/8	SOLIDEAL PON 555	■		■	■		17.8	6.0	16.2	4630	3790	4125	3470	3360	2755	4630	3790	3305	2470	6955
18 X 7 X 12 1/8	SOLIDEAL PON 775	■		■		■	18.1	7.0	16.3	5620	4630	5025	4210	4090	3350	5620	4630	4010	3020	8500
18 X 7 X 12 1/8	SOLIDEAL PON 550		■	■	■		18.0	7.0	16.3	5620	4630	5025	4210	4090	3350	5620	4630	4010	3020	8500
18 X 7 X 12 1/8	SOLIDEAL PON 555	■		■	■		18.0	7.0	16.2	5620	4630	5025	4210	4090	3350	5620	4630	4010	3020	8500
18 X 8 X 12 1/8	SOLIDEAL PON 775	■		■		■	18.0	8.0	16.2	6615	5455	5910	4960	4805	3945	6615	5455	4740	3540	9985
18 X 8 X 12 1/8	SOLIDEAL PON 550		■	■	■		18.0	8.0	16.3	6615	5455	5910	4960	4805	3945	6615	5455	4740	3540	9985
18 X 8 X 12 1/8	SOLIDEAL PON 555	■		■	■		17.8	8.0	16.2	6615	5455	5910	4960	4805	3945	6615	5455	4740	3540	9985
18 X 9 X 12 1/8	SOLIDEAL PON 550		■	■	■		18.0	9.0	16.2	7605	6285	6810	5730	5535	4540	7605	6285	5455	4090	11530
18 X 9 X 12 1/8	SOLIDEAL PON 555	■		■	■		17.8	9.0	16.1	7605	6285	6810	5730	5535	4540	7605	6285	5455	4090	11530

Blue sections represent hub size

PRESS-ON TIRES

TECHNICAL DATA

TIRE SIZE ¹	BRAND	TREAD PATTERN		RUBBER COMPOUND			ACTUAL TIRE DIMENSIONS			LOAD CAPACITY (lb.) ²										
		Smooth	Traction	Black	Non-marking	NMAS	Overall diameter (in.)	Overall width (in.)	Replacement overall diameter ⁵ (in.)	Counterbalanced lift trucks						Other vehicles ³				Static 0 mph
										Up to 6 mph		Up to 10 mph		Up to 16 mph		4 mph	6 mph	10 mph	16 mph	
										Load wheel	Steering wheel	Load wheel	Steering wheel	Load wheel	Steering wheel					
15"																				
21 X 6 X 15	SOLIDEAL PON 550		■	■			21.2	6.0	19.3	5180	4255	4630	3890	3770	3085	5180	4255	3705	2765	7805
21 X 7 X 15	SOLIDEAL PON 775	■		■		■	21.1	7.0	19.2	6340	5180	5645	4740	4595	3770	6340	5180	4520	3395	9555
21 X 7 X 15	SOLIDEAL PON 550		■	■	■		21.0	7.0	19.2	6340	5180	5645	4740	4595	3770	6340	5180	4520	3395	9555
21 X 7 X 15	SOLIDEAL PON 555	■		■	■		20.8	7.0	19.3	6340	5180	5645	4740	4595	3770	6340	5180	4520	3395	9555
21 X 8 X 15	SOLIDEAL PON 775	■		■		■	21.0	8.0	19.2	7440	6120	6670	5600	5410	4440	7440	6120	5345	3990	11245
21 X 8 X 15	SOLIDEAL PON 550		■	■	■		21.0	8.0	19.2	7440	6120	6670	5600	5410	4440	7440	6120	5345	3990	11245
21 X 8 X 15	SOLIDEAL PON 555	■		■	■		20.8	8.0	19.2	7440	6120	6670	5600	5410	4440	7440	6120	5345	3990	11245
21 X 9 X 15	SOLIDEAL PON 775	■		■		■	21.0	9.0	19.2	8600	7055	7660	6435	6240	5115	8600	7055	6120	4610	12985
21 X 9 X 15	SOLIDEAL PON 550		■	■	■		21.0	9.0	19.3	8600	7055	7660	6435	6240	5115	8600	7055	6120	4610	12985
21 X 9 X 15	SOLIDEAL PON 555	■		■	■		20.9	9.1	19.2	8600	7055	7660	6435	6240	5115	8600	7055	6120	4610	12985
16"																				
20 X 8 X 16	SOLIDEAL PON 555	■		■			20.1	8.0	18.9	6635	5445	5920	4970	4815	3945	6635	5445	4740	3550	10020
20 X 8 X 16	SOLIDEAL PON 550		■	■			20.1	8.0	18.9	6635	5445	5920	4970	4815	3945	6635	5445	4740	3550	10020
20 X 9 X 16	SOLIDEAL PON 555	■		■			20.0	9.0	18.9	7595	6240	6780	5690	5510	4520	7595	6240	5425	4070	11465
22 X 6 X 16	SOLIDEAL PON 550		■	■	■		22.2	6.0	20.3	5400	4410	4805	4035	3900	3195	5400	4410	3835	2865	8090
22 X 6 X 16	SOLIDEAL PON 555	■		■			22.0	6.0	20.2	5400	4410	4805	4035	3900	3195	5400	4410	3835	2865	8090
22 X 7 X 16	SOLIDEAL PON 550		■	■	■		22.0	7.0	20.3	6560	5400	5840	4915	4760	3900	6560	5400	4685	3515	9910
22 X 7 X 16	SOLIDEAL PON 555	■		■	■		21.9	7.0	20.2	6560	5400	5840	4915	4760	3900	6560	5400	4685	3515	9910
22 X 8 X 16	SOLIDEAL PON 775	■		■		■	22.1	8.0	20.2	7715	6340	6900	5785	5610	4595	7715	6340	5510	4135	11650
22 X 8 X 16	SOLIDEAL PON 550		■	■	■		22.0	8.0	20.3	7715	6340	6900	5785	5610	4595	7715	6340	5510	4135	11650
22 X 8 X 16	SOLIDEAL PON 555	■		■	■		21.9	8.0	20.2	7715	6340	6900	5785	5610	4595	7715	6340	5510	4135	11650
22 X 9 X 16	SOLIDEAL PON 775	■		■		■	22.0	9.0	20.2	8930	7330	7935	6670	6460	5290	8930	7330	6340	4785	13470
22 X 9 X 16	SOLIDEAL PON 550		■	■	■		22.0	9.0	20.3	8930	7330	7935	6670	6460	5290	8930	7330	6340	4785	13470
22 X 9 X 16	SOLIDEAL PON 555	■		■	■		22.0	9.1	20.2	8930	7330	7935	6670	6460	5290	8930	7330	6340	4785	13470

Blue sections represent hub size

PRESS-ON TIRES

TECHNICAL DATA

TIRE SIZE ¹	BRAND	TREAD PATTERN		RUBBER COMPOUND			ACTUAL TIRE DIMENSIONS			LOAD CAPACITY (lb.) ²										
		Smooth	Traction	Black	Non-marking	NMAS	Overall diameter (in.)	Overall width (in.)	Replacement overall diameter ⁵ (in.)	Counterbalanced lift trucks						Other vehicles ³				Static 0 mph
										Up to 6 mph		Up to 10 mph		Up to 16 mph		4 mph	6 mph	10 mph	16 mph	
										Load wheel	Steering wheel	Load wheel	Steering wheel	Load wheel	Steering wheel					
22 X 10 X 16	SOLIDEAL PON 775	■		■		■	22.0	10.0	20.2	10085	8265	8995	7550	7310	5995	10085	8265	7165	5400	15210
22 X 10 X 16	SOLIDEAL PON 550		■	■	■		22.2	10.0	20.3	10085	8265	8995	7550	7310	5995	10085	8265	7165	5400	15210
22 X 10 X 16	SOLIDEAL PON 555	■		■	■		21.9	10.0	20.2	10085	8265	8995	7550	7310	5995	10085	8265	7165	5400	15210
22 X 12 X 16	SOLIDEAL PON 775	■		■		■	22.0	12.0	20.3	12400	10195	11090	9315	9015	7385	12400	10195	8875	6660	18770
22 X 12 X 16	SOLIDEAL PON 550		■	■	■		22.0	12.0	20.3	12400	10195	11090	9315	9015	7385	12400	10195	8875	6660	18770
22 X 12 X 16	SOLIDEAL PON 555	■		■	■		21.9	12.0	20.2	12400	10195	11090	9315	9015	7385	12400	10195	8875	6660	18770
22 X 14 X 16	SOLIDEAL PON 555	■		■	■		21.9	14.0	20.2	14770	12135	13185	11080	10725	8795	14770	12135	10550	7925	22335
22 X 16 X 16	SOLIDEAL PON 555	■		■	■		22.0	16.0	20.2	17075	14020	15245	12810	12400	10165	17075	14020	12190	9160	25825
17 3/4"																				
22 X 6 X 17 3/4	SOLIDEAL PON 555	■		■			22.0	6.0	20.8	5170	4245	4610	3880	3750	3075	5170	4245	3695	2765	7815
22 X 7 X 17 3/4	SOLIDEAL PON 555	■		■			22.0	7.0	20.8	6240	5115	5555	4675	4520	3705	6230	5115	4440	3340	9405
22 X 8 X 17 3/4	SOLIDEAL PON 555	■		■			22.0	8.0	20.8	7220	5930	6450	5410	5245	4300	7220	5930	5160	3880	10925
20"																				
26 X 6 X 20	SOLIDEAL PON 555	■		■			26.1	6.0	24.3	6120	5015	5445	4575	4420	3625	6120	5015	4355	3250	9170
26 X 7 X 20	SOLIDEAL PON 555	■		■			-	-	-	7440	6120	6615	5565	5390	4420	7440	6120	5290	3980	11220
26 X 8 X 20	SOLIDEAL PON 555	■		■			26.1	7.0	24.3	8765	7220	7825	6570	6360	5215	8765	7220	6285	4685	13215
22"																				
28 X 10 X 22	SOLIDEAL PON 550		■	■	■		28.0	10.0	26.3	12060	9900	10760	9040	8750	7175	12060	9900	8610	6460	18210
28 X 10 X 22	SOLIDEAL PON 555	■		■	■		27.9	10.0	26.2	12060	9900	10760	9040	8750	7175	12060	9900	8610	6460	18210
28 X 12 X 22	SOLIDEAL PON 775	■		■		■	28.0	12.0	26.2	14860	12215	13270	11155	10805	8850	14860	12215	10625	7970	22465
28 X 12 X 22	SOLIDEAL PON 550		■	■	■		28.1	12.0	26.3	14860	12215	13270	11155	10805	8850	14860	12215	10625	7970	22465
28 X 12 X 22	SOLIDEAL PON 555	■		■	■		28.0	12.0	26.2	14860	12215	13270	11155	10805	8850	14860	12215	10625	7970	22465
28 X 14 X 22	SOLIDEAL PON 555	■		■			27.8	14.0	26.3	17680	14530	15785	13270	12830	10540	17680	14530	12610	9480	26730
28 X 14 X 22	SOLIDEAL PON 552		■*	■			28.2	14.0	26.3	17680	14530	15785	13270	12830	10540	17680	14530	12610	9480	26730
28 X 16 X 22	SOLIDEAL PON 555	■		■			28.0	16.0	26.2	20435	16800	18255	15320	14835	12170	20435	16800	14595	10970	30900
33 X 13 3/4 X 22	SOLIDEAL PON 555	■		■	■		33.3	13.8	29.8	20060	16415	17460	14330	14065	11465	20845	14850	13030	10415	30290
33 X 14 X 22	SOLIDEAL PON 775	■		■		■	33.1	14.0	29.6	20060	16415	17460	14330	14065	11465	20845	14850	13030	10415	30290

Blue sections represent hub size

PRESS-ON TIRES

TECHNICAL DATA

TIRE SIZE ¹	BRAND	TREAD PATTERN		RUBBER COMPOUND			ACTUAL TIRE DIMENSIONS			LOAD CAPACITY (lb.) ²											
		Smooth	Traction	Black	Non-marking	NMA5	Overall diameter (in.)	Overall width (in.)	Replacement overall diameter ⁵ (in.)	Counterbalanced lift trucks						Other vehicles ³				Static 0 mph	
										Up to 6 mph		Up to 10 mph		Up to 16 mph		4 mph	6 mph	10 mph	16 mph		
										Load wheel	Steering wheel	Load wheel	Steering wheel	Load wheel	Steering wheel						
140																					
33 X 16 X 22	SOLIDEAL PON 775	■		■		■	33.1	16.0	30.0	23975	19655	20900	17150	16845	13725	24955	17780	15600	12480	36265	
170																					
250 / 130 - 140	SOLIDEAL PON 555	■		■			9.8	5.1	8.6	2350	1930	2095	1765	1710	1400	2350	1930	1675	1255	3550	
203																					
250 / 80 - 170	SOLIDEAL PON 555	■		■			9.8	3.1	9.0	1365	1125	1225	1015	-	-	1365	1125	970	740	2060	
250 / 105 - 170	SOLIDEAL PON 555	■		■			9.8	4.1	9.0	1730	1420	1545	1300	1255	1025	1730	1420	1235	925	2610	
220																					
300 / 90 - 203	SOLIDEAL PON 555	■		■			11.8	3.5	10.7	1840	1510	1640	1380	-	-	2195	1445	1310	990	2780	
240																					
365 / 160 - 220	SOLIDEAL PON 555	■		■			14.4	6.3	12.6	4145	3405	3705	3110	3010	2470	4145	3405	2965	2225	6260	
270																					
300 / 75 - 240	SOLIDEAL PON 555	■		■			11.9	3.0	11.2	1380	1135	1235	1035	-	-	1380	1135	980	750	2085	
280																					
360 / 60 - 270	SOLIDEAL PON 555	■		■			14.3	2.4	13.2	1235	1015	1100	915	-	-	1465	960	880	660	1865	
360 / 85 - 270	SOLIDEAL PON 555	■		■			14.3	3.3	13.2	1940	1585	1730	1445	-	-	2305	1520	1380	1045	2920	
305																					
350 / 90 - 280	SOLIDEAL PON 555	■		■			13.8	3.5	13.0	1995	1630	1775	1490	-	-	2360	1555	1420	1070	3000	
370																					
415 / 75 - 305	SOLIDEAL PON 555	■		■			16.4	3.0	15.1	1820	1490	1610	1345	-	-	2150	1420	1290	980	2735	
415 / 90 - 305	SOLIDEAL PON 555	■		■			16.4	3.5	15.1	2360	1930	2095	1755	-	-	2790	1840	1675	1270	3550	
415 / 100 - 305	SOLIDEAL PON 555	■		■			16.4	3.9	15.1	2460	2015	2205	1840	1785	1465	2460	2015	1755	1310	3715	
410																					
520 / 120 - 370	SOLIDEAL PON 555	■		■			20.5	4.7	18.7	3695	3030	3295	2765	2680	2195	3695	3030	2635	1975	5555	
550 / 150 - 370	SOLIDEAL PON 555	■		■			21.8	5.9	19.5	5190	4255	4620	3880	3760	3075	5170	4255	3695	2780	7815	
410																					
550 / 120 - 410	SOLIDEAL PON 555	■		■			21.7	4.7	20.0	3860	3175	3450	2900	2800	2295	3860	3175	2755	2070	5830	
645 / 300 - 410	SOLIDEAL PON 555	■		■			-	-	-	13360	10935	11630	9545	9195	7630	13880	9890	8675	6945	20185	

Blue sections represent hub size

PRESS-ON TIRES

TECHNICAL DATA

TIRE SIZE ¹	BRAND	TREAD PATTERN		RUBBER COMPOUND			ACTUAL TIRE DIMENSIONS			LOAD CAPACITY (lb.) ²										
		Smooth	Traction	Black	Non-marking	NMA5	Overall diameter (in.)	Overall width (in.)	Replacement overall diameter ⁵ (in.)	Counterbalanced lift trucks						Other vehicles ³				Static 0 mph
										Up to 6 mph		Up to 10 mph		Up to 16 mph		4 mph	6 mph	10 mph	16 mph	
										Load wheel	Steering wheel	Load wheel	Steering wheel	Load wheel	Steering wheel					
480																				
660 / 250 - 480	SOLIDEAL PON 555	■		■			25.8	9.8	23.9	10540	8620	9170	7530	7255	6030	10945	7805	6845	5480	15915
660 / 250 - 480	SOLIDEAL LUG ERP		■	■			26.0	9.8	23.8	10540	8620	9170	7530	7255	6030	10945	7805	6845	5480	15915
660 / 250 - 480	SOLIDEAL PON 555	■		■			26.0	11.0	23.8	12050	9875	10505	8630	8465	6900	12545	8940	7835	6270	18230

Blue sections represent hub size

Remarks

(1) Tolerances on wheel diameter

Code designated sizes (inch sizes): nominal rim diameter +0.005"/-0"

Metric sizes (mm sizes): h11 according to ISO/R286

Surface roughness: Ra < 6.3 μm

Chamfer: 5 mm wide @ 30°

(2) The speeds quoted in the table are the maximum speeds of the unloaded vehicle. An increase in load capacity for lower speeds is not permitted.

(3) This category includes:

- Drive and steer wheels on other than counterbalanced forklift trucks;
- Wheels and mobile cranes;
- Free-rolling wheels on trailers, up to a maximum distance of 2000 m per journey.

For longer distances and for wheels fitted to rotary plants, please consult the technical department.

(4) For Roll On/Roll Off trailers values of category "other vehicles" at appropriate speed should be taken.

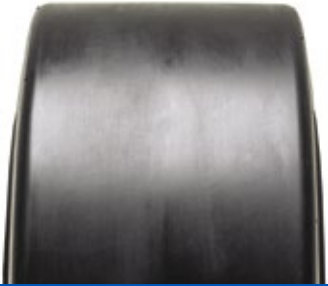
(5) The tire is considered worn out when the outside diameter is equal or smaller than the replacement overall diameter.

All specifications for non-marking tires are the same as the equivalent standard black tire.

This document contains technical data of all products globally. It is possible that certain items are not sold in your region.

Please contact your local sales representative to check tire availability in your region.

PRESS-ON TIRES (PON)



SOLIDEAL
PON 775



SOLIDEAL
PON 555



SOLIDEAL
PON 550



SOLIDEAL
PON 552 MAGNUM SEMI



SOLIDEAL
PON 775 NMAS



SOLIDEAL
PON 555 NM



SOLIDEAL
PON 550 NM

1911_MH_DataSheet_PON_Letter_IMP_EN_V16