

# Parts List

2010 - VERSION C

TATOU<sup>®</sup> 4S ATV Track System

Other languages translation available at [www.camso.co](http://www.camso.co)

---

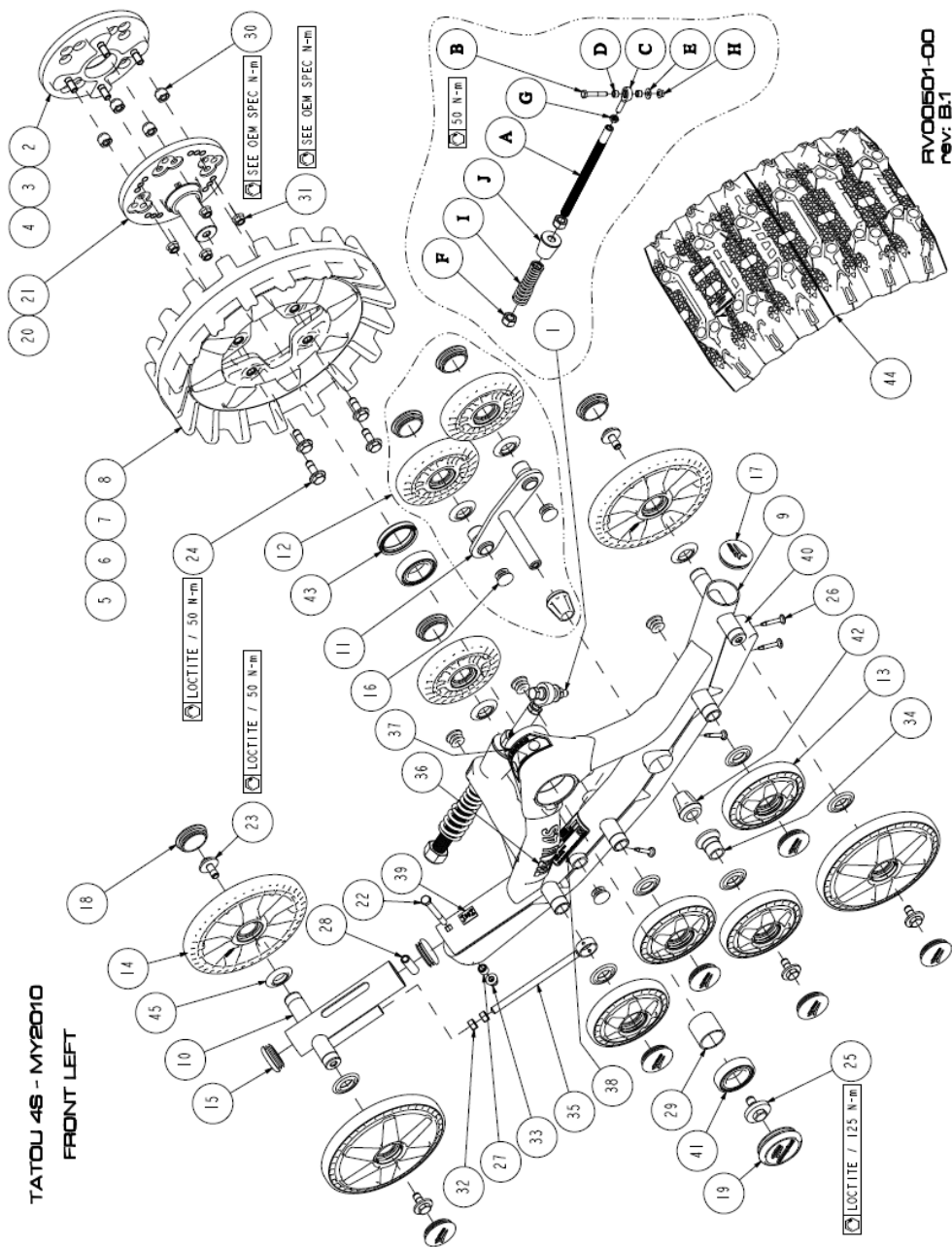


---

 **camoplast**

TATOU 4S - MY2010

FRONT LEFT

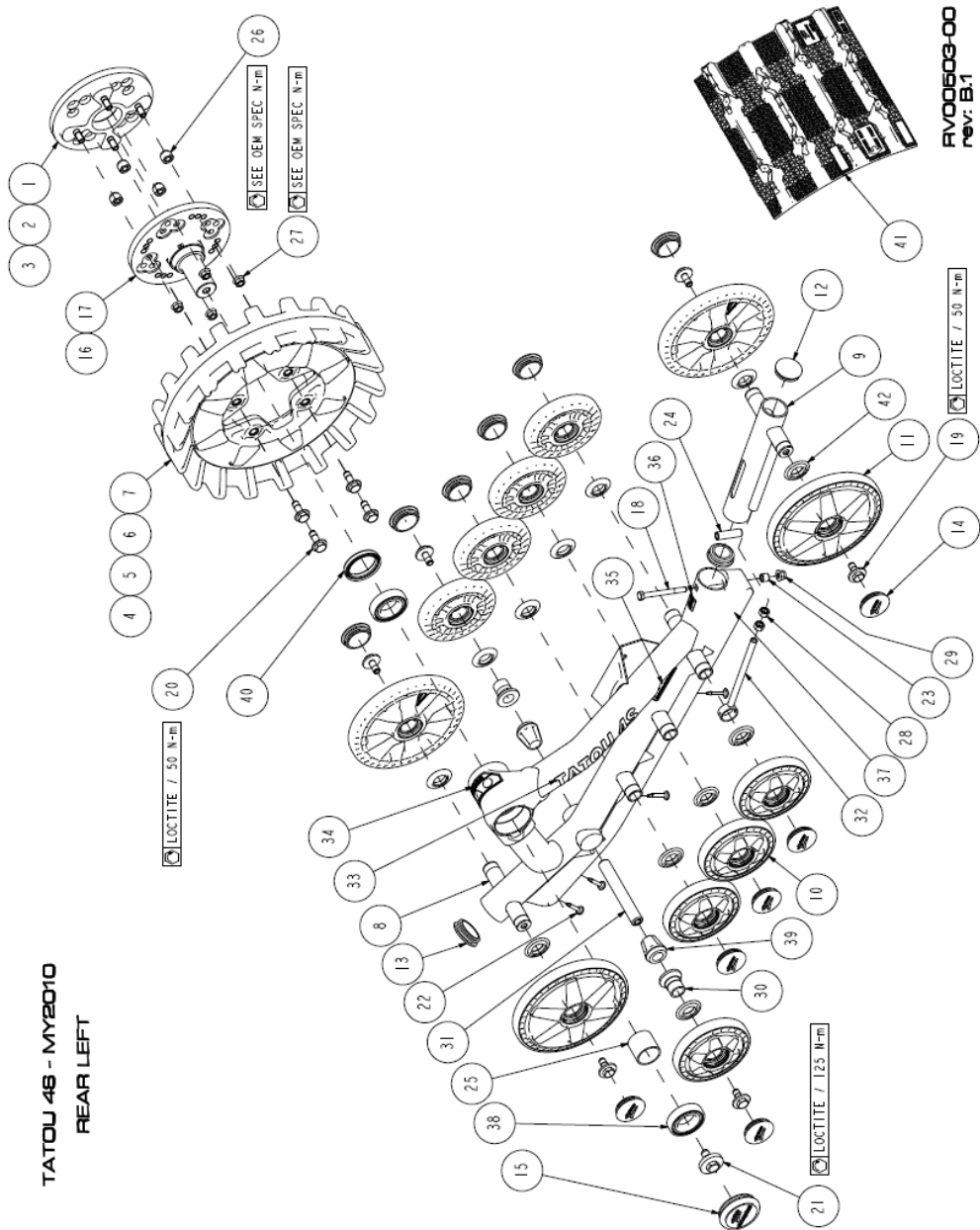


RV00501-00  
rev: B.1

Item #	# Pièce/ Part	Description	QTY
		<b>TATOU 4S - MY2010 FRONT LEFT &amp; RIGHT</b>	
1	1001-00-7102	STABILIZING ROD ASS'Y, 200 LBS/IN	1
2	1008-77-0010	MULTI HUB SPACER 1-1/8" ASS'Y (METRIC)	1
3	1008-77-0020	MULTI HUB SPACER 2" ASS'Y (METRIC)	1
4	1008-77-0040	MULTI HUB SPACER 4" ASS'Y (METRIC)	1
5	1009-00-7115	INJ SPROCKET, 15 TEETH	1
6	1009-00-7116	INJ SPROCKET, 16 TEETH	1
7	1009-00-7117	INJ SPROCKET, 17 TEETH	1
8	1009-00-7118	INJ SPROCKET, 18 TEETH	1
9-A	1010-00-722X	RH FRONT FRAME - TATOU 4S	1
9-B	1011-00-722X	LH FRONT FRAME - TATOU 4S	1
10	1014-00-722X	TRACK TENSIONNER	1
11	1015-00-7010	STABILIZER ASS'Y	1
12	1015-00-7103	STABILIZER W/ WHEELS ASS'Y	1
13	1016-00-3132	132mm INJECTION ATV WHEEL ASS'Y	7
14	1016-00-3200	200mm INJECTION ATV WHEEL ASS'Y	4
15	1017-00-0001	2 LIPS CAP, 1-3/4" O.D. TUBE	2
16	1017-00-0005	2 LIPS CAP, 1" O.D. TUBE	6
17	1017-00-0010	2 LIPS CAP, 2" O.D. TUBE (LDPE)	1
18	1017-00-0110	2 LIPS CAP, 2" O.D. TUBE (ESPRENE)	11
19	1017-00-7011	HUB CAP (HOT STAMPED) ASS'Y	1
20	1019-05-0010	POLARIS HUB (METRIC), ASS'Y	1
21	1019-77-0011	ATV MULTI-MODEL HUB (METRIC), ASS'Y	1
22	1033-08-0080	HEX SCR ,DIN 931, 8.8, YNZ / M8x1.25x80	1
23	1033-10-2026	HEX SCR W/ WASHER 30 OD, 8.8, YZN / M10x1.5x25	5
24	1033-10-2030	HEX SCR W/ WASHER 25 OD, 8.8, YZN / M10x1.5x30	4
25	1033-12-2030	HEX SCR W/ WASHER 40 OD, 8.8, YZN / M12x1.75x30	1
26	1049-00-0007	SELF TAPPING SCREW, YNZ / #12-24x1.5"	4
27	1050-00-0016	SLIDE BUSHING	1
28	1051-00-0015	TENSIONNER BUSHING	1
29	1051-00-0037	INTERNAL SPACER	1
30	1071-00-0001	HEX NUT TAPER, 8.8, YZN / M10x1.25	4
31	1072-00-0001	HEX FLANGE SERRATED NUT, 8, YZN / M10x1.25	4
32	1073-10-0003	HEX NUT 8.8 CLE 14 YZN / M10x1.5	2
33	1074-08-0001	HEX FLANGE NYLON INSERT 8.8 YZN / M8x1.25	1
34	1082-00-7001	WHEEL AXLE, STABILIZER	1
35	1082-00-7013	TENSIONNER ROD ASS'Y - 188mm	1
36	1083-00-7010	STICKER - TATOU 4S DECAL	1
37	1083-00-8002	STICKER - WARNING	1
38	1083-00-8040	STICKER - SERIAL NUMBER TATOU 4S	1
39-A	1083-00-8100	STICKER - FRONT LEFT PICTOGRAM	1
39-B	1083-00-8110	STICKER - FRONT RIGHT PICTOGRAM	1
40	1085-00-7010	TRACK GUIDE - TATOU 4S	1
41	1090-00-0001	6007 DU2 BALL BEARING, SEALED	2
42	1093-00-7000	RUBBER CONE, STABILIZER	2
43	1093-00-7002	SHAFT SEAL 50 x 62 x 10 TC	1
44	1093-00-7005	TRACK 11.5" x 93.38" x 1.00" (9101S)	1
45	1093-00-7009	WHEEL SEAL (25 ID X 42 OD)	11
A	1000-00-7002	THREADED ROD, STABILIZING ROD	1
B	1033-10-1060	HEX SCR ,DIN 931, 10.9, YNZ / M10x1.5x60	1
C	1047-00-7010	ROD END, STABILIZING ROD	1
D	1050-00-0013	ROD END SPACER	2
E	1060-00-0004	WASHER 3/8" GRADE 8 YELLOW ZINC PLATED	1
F	1071-20-0001	HEX NYLON INSERT 8.8 YZN / M20x2.5	2
G	1073-12-3002	HEX THIN NUT YZN / M12x1.25	1
H	1074-10-0001	HEX FLANGE NYLON INSERT 8.8 YZN / M10x1.5	1
I	1080-00-0002	200 LBS/IN COMPRESSION SPRING	1
J	1093-00-7007	RUBBER DAMPER	1

2009-11-26 / rev B

**TATOUJ 46 - MY2010**  
**REAR LEFT**



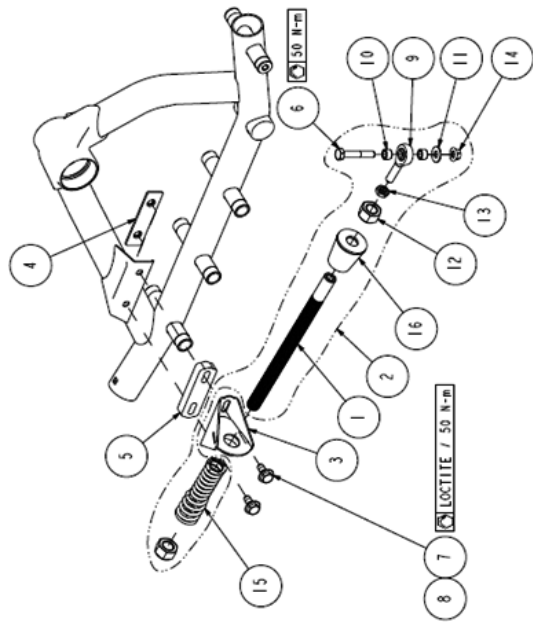
**RV00503-00**  
**rev: B.1**

Item #	# Pièce/ Part	Description	QTY
		<b>TATOU 4S - MY2010 REAR LEFT &amp; RIGHT</b>	
1	1008-77-0010	MULTI HUB SPACER 1-1/8" ASS'Y (METRIC)	1
2	1008-77-0020	MULTI HUB SPACER 2" ASS'Y (METRIC)	1
3	1008-77-0040	MULTI HUB SPACER 4" ASS'Y (METRIC)	1
4	1009-00-7115	INJ SPROCKET, 15 TEETH	1
5	1009-00-7116	INJ SPROCKET, 16 TEETH	1
6	1009-00-7117	INJ SPROCKET, 17 TEETH	1
7	1009-00-7118	INJ SPROCKET, 18 TEETH	1
8-A	1012-00-722X	RH REAR FRAME - TATOU 4S	1
8-B	1013-00-722X	LH REAR FRAME - TATOU 4S	1
9	1014-00-732X	LONG TRACK TENSIONNER	1
10	1016-00-3132	132mm INJECTION ATV WHEEL ASS'Y	8
11	1016-00-3200	200mm INJECTION ATV WHEEL ASS'Y	4
12	1017-00-0001	2 LIPS CAP, 1-3/4" O.D. TUBE	2
13	1017-00-0010	2 LIPS CAP, 2" O.D. TUBE (LDPE)	1
14	1017-00-0110	2 LIPS CAP, 2" O.D. TUBE (ESPRENE)	12
15	1017-00-7011	HUB CAP (HOT STAMPED) ASS'Y	1
16	1019-05-0010	POLARIS HUB (METRIC), ASS'Y	1
17	1019-77-0011	ATV MULTI-MODEL HUB (METRIC), ASS'Y	1
18	1033-08-0080	HEX SCR ,DIN 931, 8.8, YNZ / M8x1.25x80	1
19	1033-10-2026	HEX SCR W/ WASHER 30 OD, 8.8, YZN / M10x1.5x25	6
20	1033-10-2030	HEX SCR W/ WASHER 25 OD, 8.8, YZN / M10x1.5x30	4
21	1033-12-2030	HEX SCR W/ WASHER 40 OD, 8.8, YZN / M12x1.75x30	1
22	1049-00-0007	SELF TAPPING SCREW, YNZ / #12-24x1.5"	4
23	1050-00-0016	SLIDE BUSHING	1
24	1051-00-0015	TENSIONNER BUSHING	1
25	1051-00-0037	INTERNAL SPACER	1
26	1071-00-0001	HEX NUT TAPER, 8.8, YZN / M10x1.25	4
27	1072-00-0001	HEX FLANGE SERRATED NUT, 8, YZN / M10x1.25	4
28	1073-10-0003	HEX NUT 8.8 CLE 14 YZN / M10x1.5	2
29	1074-08-0001	HEX FLANGE NYLON INSERT 8.8 YZN / M8x1.25	1
30	1082-00-7001	WHEEL AXLE, STABILIZER	2
31	1082-00-7012	AXLE, REAR STABILIZER	1
32	1082-00-7013	TENSIONNER ROD ASS'Y- 188mm	1
33	1083-00-7010	STICKER - TATOU 4S DECAL	1
34	1083-00-8002	STICKER - WARNING	1
35	1083-00-8040	STICKER - SERIAL NUMBER TATOU 4S	1
36-A	1083-00-8120	STICKER - REAR LEFT PICTOGRAM	1
36-B	1083-00-8130	STICKER - REAR RIGHT PICTOGRAM	1
37	1085-00-7010	TRACK GUIDE - TATOU 4S	1
38	1090-00-0001	6007 DU2 BALL BEARING, SEALED	2
39	1093-00-7000	RUBBER CONE, STABILIZER	2
40	1093-00-7002	SHAFT SEAL 50 x 62 x 10 TC	1
41	1093-00-7006	TRACK 12.5" x 98.57" x 1.188" (9100S)	1
42	1093-00-7009	WHEEL SEAL (25 ID X 42 OD)	12

2009-11-26 / rev B

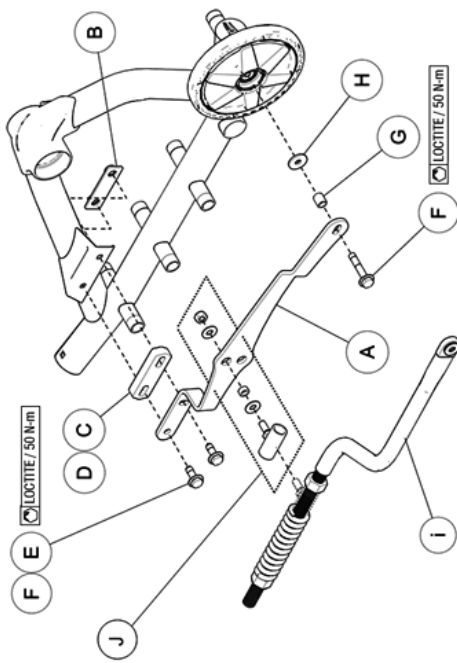
TATOU 48 - MY2010

INDEPENDENT SUSPENSION (IS) OPTION



TATOU 48 - MY2010

RIGID AXLE SUSPENSION (RS) OPTION



Item #	Part #	Description	QTY
		<b>TATOU 4S - MY2010</b>	
		<b>INDEPENDENT SUSPENSION (IS) OPTION</b>	
1	1000-00-7002	THREADED ROD, STABILIZING ROD	1
2	1001-00-7102	STABILIZING ROD ASS'Y, 200 LBS/IN	1
3	1015-00-7005	BRACKET ANTI-ROTATION (IS)	1
4	1015-00-7026	BACK PLATE	1
5	1015-05-7005	SPACER 5/8", ANTI-ROTATION BRACKET	1
6	1033-10-1060	HEX SCR, DIN931, 10.9.YNZ / M10x1.5x60	1
7	1033-10-2025	HEX SCR W/ WASHER 25 OD, 8.8, YZN / M10x1.5x25	2
8	1033-10-2045	HEX SCR W/ WASHER 25 OD, 8.8, YZN / M10x1.5x45	2
9	1047-00-7010	ROD END, STABILIZING ROD	1
10	1050-00-0013	ROD END SPACER	2
11	1060-00-0004	WASHER, 3/8" GRADE 8 YELLOW ZINC PLATED	1
12	1071-20-0001	HEX NYLON NUT 8.8 YZN / M20x2.5	2
13	1073-12-3002	HEX THIN NUT YZN / M12x1.25	1
14	1074-10-0001	HEX FLANGE NYLON NUT 8.8 YZN / M10x1.5	1
15	1080-00-0002	200 LBS/IN COMPRESSION SPRING	1
16	1093-00-7007	RUBBER DAMPER	1
		2019-09-23 / rev C	
Item #	Part #	Description	QTY
		<b>TATOU 4S - MY2010</b>	
		<b>RIGID AXLE SUSPENSION (RS) OPTION</b>	
A-1	1015-00-7004	LH, BRACKET ANTI-ROTATION (RS)	1
A-2	1015-00-7014	RH, BRACKET ANTI-ROTATION (RS)	1
B	1015-00-7026	BACK PLATE	1
C	1015-05-7002	SPACER 1/4", ANTI-ROTATION (RS)	1
D	1015-05-7005	SPACER 5/8", ANTI-ROTATION BRACKET	1
E	1033-10-2030	HEX SCR W/ WASHER 25 OD, 8.8, YZN / M10x1.5x30	2
F	1033-10-2045	HEX SCR W/ WASHER 25 OD, 8.8, YZN / M10x1.5x45	3
G	1050-00-0011	BUSHING 5/8" O.D. x 27/32" I.D. x 0.709" LG	1
H	1060-38-0114	WASHER 3/8" x 1-1/4", ZINC PLATED	1
I	VARIABLE	STABILIZING ARM, RIGID AXLE ASSY	1
J	7050-00-0024	S-KIT - BUSHING RS, STABILIZING ROD	1
		2019-09-23 / rev C	