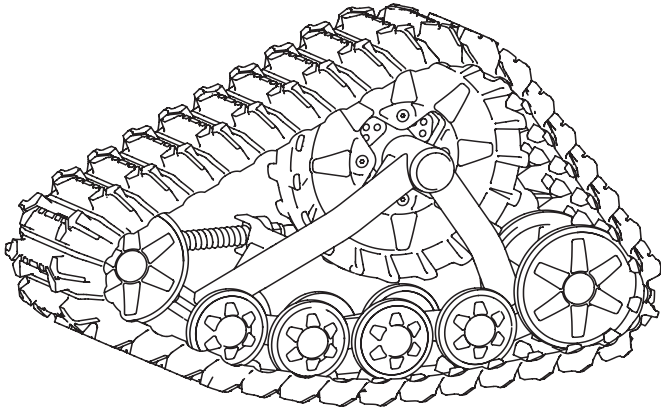


# User Manual

TATOU<sup>®</sup> 4S ATV Track System

---



---

 **camoplast**

## **IMPORTANT**

Please read carefully each part of this document as well as model specific Installation Guidelines prior to assembling, installing and using the track system.

# TABLE OF CONTENTS

INTRODUCTION .....	1
USING THE ATV WITH TRACKS .....	1
HINTS AND TIPS .....	2
GENERAL INFORMATION .....	2
SAFETY .....	3
USER NOTICE AND DISCLAIMER .....	3
INSTALLATION, REMOVAL AND RE-INSTALLATION .....	6
ADJUSTMENTS .....	9
INSTALLATION OF A RUBBER TRACK .....	18
MAINTENANCE SCHEDULE .....	21
TORQUE TABLE .....	23
STORAGE .....	23
WARRANTY .....	24
SERIAL NUMBER LOCATION .....	26
TECHNICAL SUPPORT .....	27
PARTS LIST .....	CENTRAL PAGES

## INTRODUCTION

---

## INTRODUCTION

Thank you for choosing **Tatou® 4S**, an ATV Track System by Camoplast (hereinafter referred to as the "System"). You have made the right choice. This system will provide you with all the traction, performance and durability that you need for your recreational needs or to properly complete your work all year round.

## USING THE ATV WITH TRACKS

~~The driver must remain vigilant and careful at all times.~~  
Powder snow or mud can hide obstacles that could be hazardous.

- ⚠ Driving characteristics of your ATV will change with the installation of the System. It is important to take the time to get accustomed to the System.
- ⚠ Before departure, ensure that wheels are not stuck or jammed in place.
- ⚠ While riding in group, warn people who drive behind a vehicle that is equipped with a track system, because tracks can propel dangerous objects. Take particular care to this warning on "rocky" trails.
- ⚠ Adapt your driving to surrounding conditions (weather, traffic, etc.) and according to your driving abilities.
- ⚠ The ATV equipped with the System must never be used for the following activities: races, rallies, jumps, stunts, acrobatics or any other extreme applications.
- ⚠ Allow more braking distance and periodically apply brakes while riding to eliminate ice buildup on brake components.
- ⚠ Always observe your ATV manufacturer's rules and regulations. Examples: Carrying passengers, loading charge limit, etc.



## HINTS AND TIPS

Before leaving for an excursion, make sure you have the following within arms reach: two 9/16-inch (or 14-mm) wrenches, one 5/8-inch (or 16-mm) wrench, one axe, one shovel and one tow cable.

Generally, the slower you go, the better the traction will be.

For riding or excursions in unknown terrain, make sure you have a cellular phone or satellite phone, a first aid kit and spare parts in your possession.

When driving off trails, always be cautious to the presence of hidden obstacles.

When driving in deep snow, do not intentionally spin the track (tracks keep on turning while the vehicle does not). This could cause the vehicle to get stuck.

## GENERAL INFORMATION

All figures, information or photos presented in this document are up to date at the time of publication. However, they may change without notice.

Read the ATV user manual and installation guidelines carefully. Their contents remains applicable after installing of the System.

This document should be read by every person who drives the ATV equipped with the System.

This document is an integral part of the System. Pass it along to any new System owner.

Consult legal authorities where you drive your ATV equipped with the System before usage to ensure that you respect all applicable laws and regulations.

ATV track systems are designed to reduce ground pressure and increase vehicle traction. However, during normal operating conditions, vehicle speed will be reduced, compared to a wheeled vehicle.

## SAFETY

---

## SAFETY

This guide uses the following symbols to emphasize particular information:

### **WARNING**

**Indicates a potentially hazardous situation which, if not avoided, could result in death or serious injury.**

**CAUTION:** Indicates a potentially hazardous situation which, if not avoided, may result in damage to vehicle components.

*NOTE:* Indicates supplementary information.

## USER NOTICE AND DISCLAIMER

The **Tatou® 4S** System was initially designed to be used in winter conditions and was then adapted to be used in fall and spring conditions.

This document holds important information regarding driving an ATV equipped with the **Tatou® 4S** System by Camoplast. It is mandatory that every user takes the time to carefully read, understand and then consult this reference manual and user guide as well as the ATV owner's manual as needed. When purchasing either a new or used track System, the user must obtain all documentation related to the System, including manuals and guides related to the ATV on which the System is installed. If needed, contact the Camoplast products dealer nearest to you to obtain any additional information. You may also consult the Camoplast Web site at [www.camoplast.com](http://www.camoplast.com) and call our technical support line at 1 866-533-0008 or 819-533-0008 or by e-mail at [atvtracksystems@camoplast.com](mailto:atvtracksystems@camoplast.com).

Camoplast believes that there are certain risks related to the installation and use of the System. Our experience shows that the System is safe. However, the user must be aware of the risks related with driving an ATV with the particularities of this type of System. The ATV driver must, at all times, respect all applicable laws and regulations, the indications of the System manufacturer and the indications from the vehicle manufacturer fixed by law, namely when age restrictions exist and ATV base equipment is required (headlights, flashers and brake lights, rearview mirror, etc.). The user must always wear adequate safety equipment, such as a helmet, safety glasses (or visor), protective clothing, boots and gloves. It is understood that

## USER NOTICE AND DISCLAIMER

---

driving while impaired or intoxicated presents a danger for the ATV user and others and is against the law.

The System consists of many moving parts, including transmission wheels. If an object lodges itself or becomes jammed into the System and blocks the track, it is mandatory to stop the engine and the vehicle and apply the security brake before removing object said. By avoiding to do so, the user exposes himself to sudden movement of the ATV or to breakage of a part or component coming from the System, which could cause severe injuries. It is also very important to wear full length clothing and always avoid hanging or stringy accessories.

Driving an ATV equipped with such a System requires particular precautions and a knowledge of proper driving techniques of such vehicles. An evaluation by the user of the conditions and terrain (state of the ground, grade of hill, density of snow, etc.) is equally essential. An ATV equipped with a System cannot compete and/or be used to perform stunts, acrobatics or other exploits, as these could result in loss of control or severe injuries.

Insufficient knowledge of an ATV during down hill riding, climbs and crossing of obstacles and turns can result in tipping or roll over, and can cause severe injuries.

Carrying a passenger, a load or attaching a tow can cause the ATV to be less stable, and affect driveability. Unless otherwise prescribed by law and by the ATV manufacturer, you must not carry a passenger, loads or tow any objects.

The installation of a System:

- Increases ground clearance.
- Raises the center of gravity.
- Increases the ATV width and weight.
- Reduces ground pressure (psi (kgf/ m<sup>2</sup>)).

These parameters will effectively change driving characteristics of an ATV equipped with the System.

Consequentially, it is highly recommended that the user adapts his driving style in function of the new characteristics mentioned above. The driver must always use caution when he crosses obstacles, circulates through narrow paths, meets vehicles coming in the opposing direction, etc.

As it was designed, the System will considerably reduce the ATV top speed and can falsify the speedometer. Generally, the System transmission wheel diameter is less than that of the tire. Therefore, the vehicle speed will be less than that actually displayed. Whether the ATV is equipped or not with the System, users must always adapt the speed to actual driving conditions. Users must never exceed speed limits or drive faster than their capacities allow. Excessive speed remains one of the main causes of severe accidents on ATVs.

## **USER NOTICE AND DISCLAIMER**

---

Camoplast is proud to offer ATV conversion kits within its wide range of products. ATV Track Systems are not only reliable, but safe. However, there are risks inherent to driving an ATV equipped with the System. It is therefore very important that any driver familiarizes himself with proper driving techniques of an ATV equipped with a System, and that he adapts his driving to his level of experience and continually evaluates operating conditions and terrain to safely and efficiently make the best of these Camoplast ATV track systems.

# INSTALLATION, REMOVAL AND RE-INSTALLATION

### **WARNING**

**Never place body parts under the vehicle unless it is securely placed on appropriate stands. Severe injuries could occur if the vehicle collapses or moves. Do not use a lifting device as a secure stand.**

Always follow good shop practices. The place where you will be working must be clean, bright and well ventilated. If you are to use a floor jack, never use it as a stand. Always use appropriate stands. To avoid vehicle movement during operations, place blocks behind wheels that remain in contact with the ground. These recommendations also apply when removing parts.

**Read this manual before proceeding with the installation work. Read Installation Guidelines included with the System for installation instructions dedicated to your ATV model.**

## Installation

Execute all tasks described in Installation Guidelines of the vehicle model. Then, proceed to adjust the angle of attack, alignment and track tension as described in this manual. Test drive and re-adjust as required.

## Removal

**CAUTION: Leaving anchor brackets attached to suspension arms or anti-rotation bars attached to the skid plate when the ATV rides on wheels he can result from it grave damages in the vehicle. Never leave components other than the skid plate and foot rest reinforcement parts.**

Using a lifting device, raise the ATV and install appropriate stands. Ensure that the vehicle is immobilized and safe to work on.

### **At the front:**

- Remove the anti-rotation bracket cover but keep the anchor bracket attached to the anti-rotation device on the track system.

# INSTALLATION, REMOVAL AND RE-INSTALLATION

---

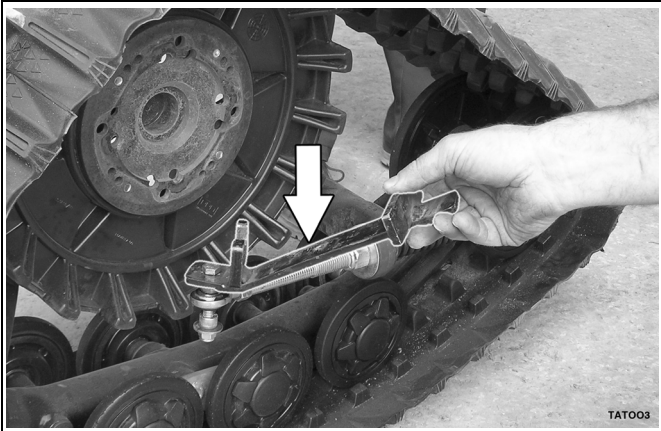


Figure 1

*Leave anchor bracket attached to the stabilizing rod.*

- Remove track systems.
- Re-install wheels.

**At the rear on an independent suspension:**

- Same procedure as the front.

**At the rear on a rigid axle suspension:**

- Disconnect the anti-rotation bar from the skid plate under the vehicle.

*NOTE: Leave the skid plate in place.*

- Remove track systems.
- Re-install wheels.

## Re-installation

Always clean wheel hubs on the ATV before installing wheels or track systems.

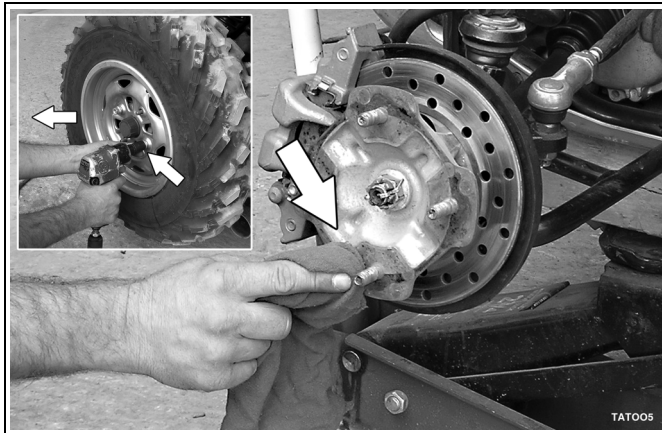


Figure 2  
*Clean wheel hubs.*

- Re-install track systems at the rear and secure stabilizing rod to anchor bracket for rigid axle.
- Re-install track systems at the front.
- Verify track tension. Adjust if required.
- Verify angle of attack. Adjust if required.
- Verify alignment. Adjust if required.

## ADJUSTMENTS

---

## ADJUSTMENTS

### Angle of attack for front tracks systems

To obtain the correct angle of attack on front tracks systems, perform the following:

- Loosen the nut (1) compressing the spring of the stabilizing rod (refer to Figure 3).

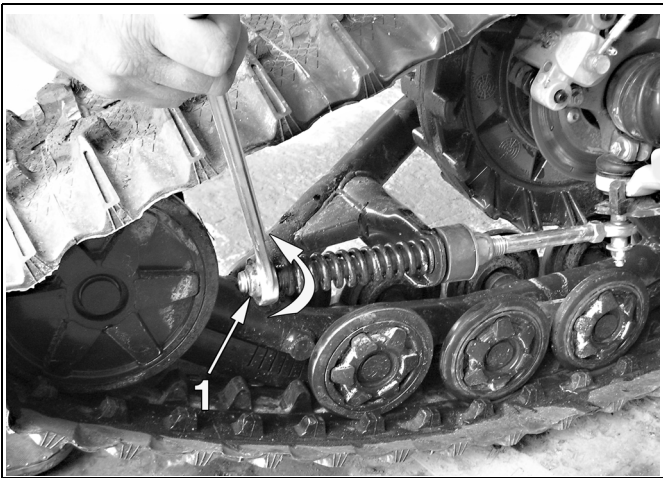


Figure 3

- Set steering handles straight ahead.
- Temporarily apply pressure on the front section of the rubber track to ensure that it is flat on the ground.
- Install a flat bar on rear wheels of the track systems and measure the height as shown on Figure 4.



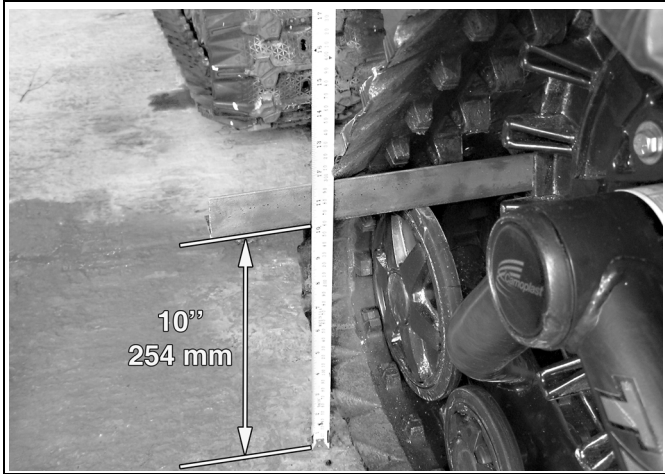


Figure 4

- Set the nut (2) shown on Figure 5 until the flat bar reaches  $10 \pm 1/4$  inches ( $254 \pm 6$  mm) above the ground.

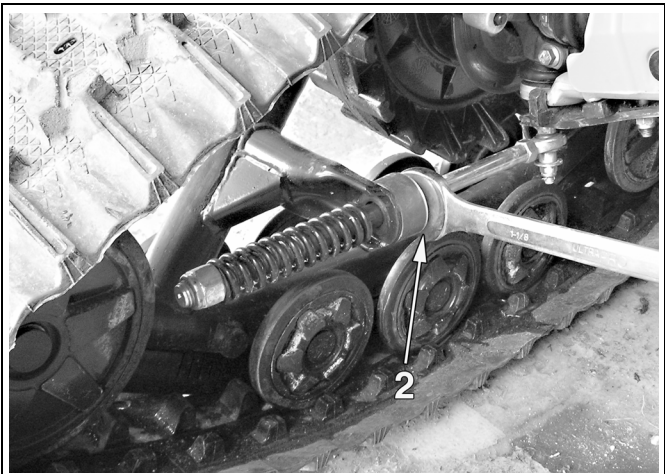


Figure 5

## ADJUSTMENTS

---

- Turn the nut (1) until it comes in contact with the spring, then compress the spring by turning this nut 1.5 turns (refer to Figure 6).

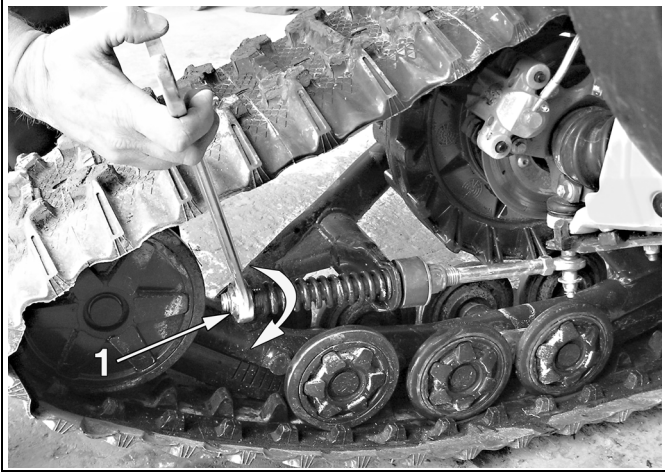


Figure 6

### Basic Tuning (front track systems):

- An adjustment of more than 10 inches (254 mm), measured with the flat bar, gives easier steering with wobbling effect at high speed. Opposite effect in reverse.
- An adjustment of less than 10 inches (254 mm), measured with the flat bar, gives harder steering and more stability at high speed. Opposite effect in reverse.
- More spring preload (compression): not recommended.
- Less spring preload (compression): gives better articulation when riding on deep and powder snow. It will not affect the steering effort.

### Angle of attack for rear track systems

To obtain the correct angle of attack on rear tracks systems, perform the following:

#### Vehicles with rigid axle or trailing arm suspension

- Loosen the nut (1) compressing the spring of the stabilizing rod (see Figure 6).
- Set the nut (2) to obtain a distance of 3/8 inch (10 mm) as shown.
- Turn the nut (1) until it comes in contact with the spring, then compress the spring by turning this nut 1.5 turns.

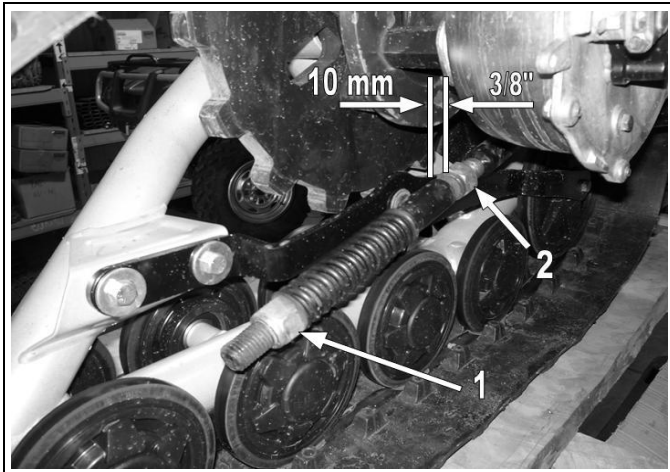


Figure 7

## ADJUSTMENTS

---

### Vehicles with independent suspension

- Loosen the nut (1) compressing the spring of the stabilizing rod (refer to Figure 6).
- Turn the nut (2) until it comes in contact with both rubber damper and bracket (3). Then, compress the rubber damper by turning the nut (2) one turn.
- Turn the nut (1) until it comes in contact with the spring. Then compress the spring by turning this nut 1.5 turns.

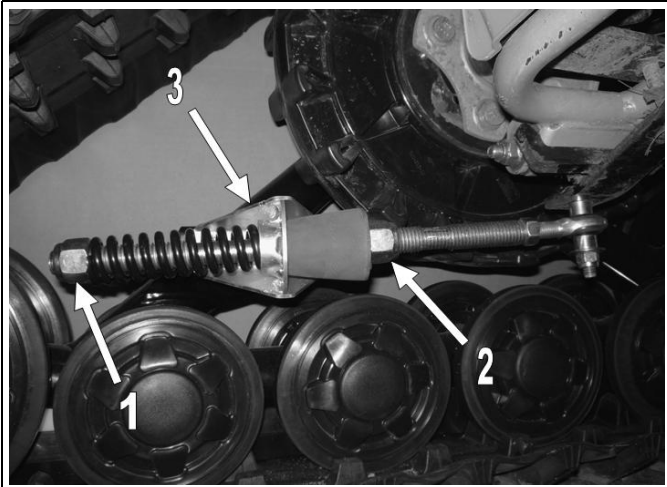


Figure 8

*NOTE: In some rare cases where the adjustment of the nut (1) compressing the spring is near the end of the threaded rod, extend the rod by unlocking the jam nut (item 3 on Figure 9) and unscrew the rod to obtain 3/4-inch (19-mm) max. of visible threads. Re-tighten the jam nut.*



Figure 9

Basic tuning (rear track systems):

- More gap at the rubber bushing gives better obstacle climb and flotation capacity on powder snow while moving **forward**. However, it does not provides better flotation capacity in summer application.
- Compressing the rubber bushing gives better obstacle climb and flotation capacity while moving in **reverse** in deep and powder snow application.
- More spring preload (compression) gives better obstacle climb and flotation capacity while moving **forward**.
- Less spring preload (compression) gives better obstacle climb and flotation capacity while moving in **reverse**.

# ADJUSTMENTS

## Alignment

The parallelism must be adjusted with the ATV on the ground, driving forward on about 10 feet (3 m) and measuring toe in distance. It should be  $\frac{1}{2}$  inch (13 mm) less at the front (B) than at the back (A) (refer to Figure 10).

*NOTE: Every time the measurement has to be verified, drive in reverse, then, drive forward again on about 10 feet (3 m).*

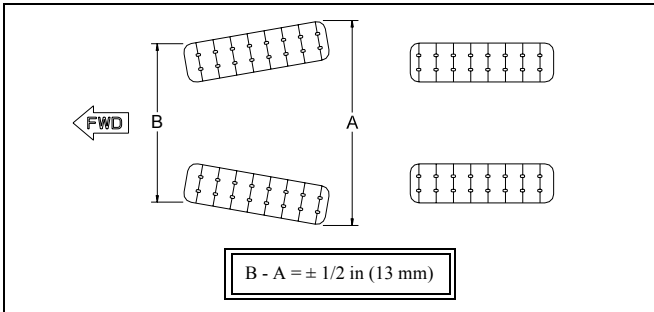


Figure 10

To perform adjustments on the ATV, first unlock the nut (1) of each tie rod end on the ATV. Then screw or unscrew the rod link (2) equally on both sides of the vehicle.

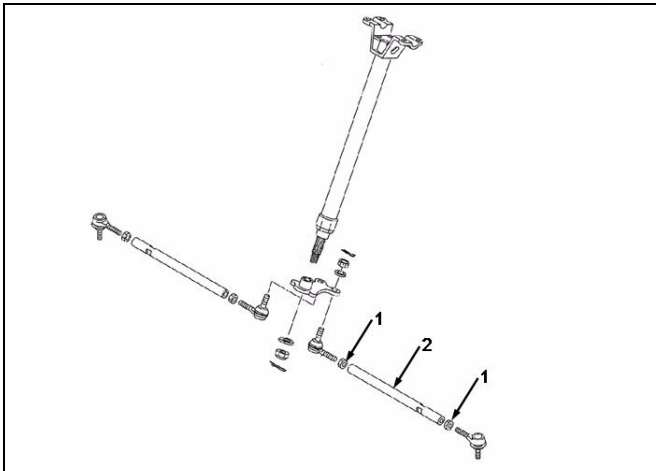


Figure 11

### Rubber track tension

Adjust tension the rubber track by turning the adjusting nut (item 1 in Figure 12) of the track tensioner. Adjust track tension.

A force of 25 lb max (11 kg) positioned as shown should produce a deflection of 3/4 inch (19 mm) (refer to Figure 13).

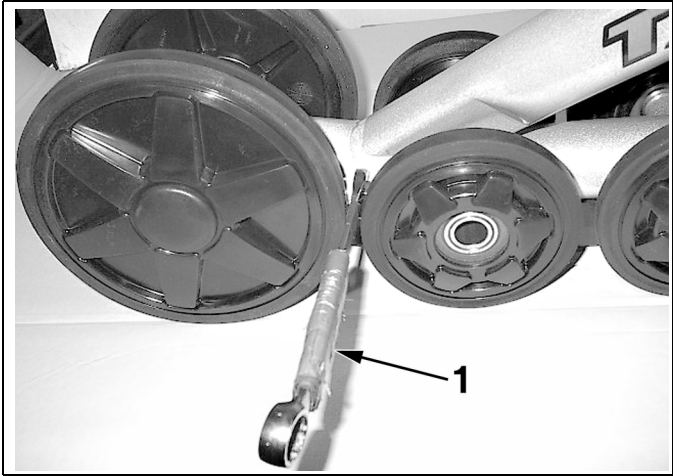


Figure 12

## ADJUSTMENTS

---

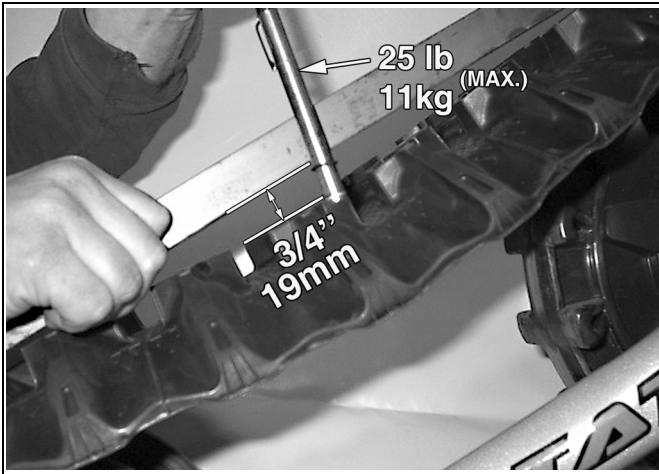


Figure 13

### Basic tuning

- A higher rubber track tension reduces the risk of “detracking” and reduces drive “ratcheting” (for severe use only).
- A lower rubber track tension provides better performance, better rolling and better fuel economy (recreational use).

### Final check

Ride at slow speed on a distance of about 1.0 mile (1.5 km). Evaluate track system performance and re-adjust as required.



### INSTALLATION OF A RUBBER TRACK

If possible, position the vehicle on a flat and level surface (or on a suitable lift device). Turn off the engine.

Proceed as follows:

- Set rubber track tension to the minimum (refer to Figure 14).



Figure 14

- Remove the two 8-in (200-mm) wheels opposite to the track tensioner side (refer to Figure 15).
- If working on rear track systems, remove the two 5-in (132-mm) wheels next to the 8-in (200-mm) wheel.

# INSTALLATION OF A RUBBER TRACK

---

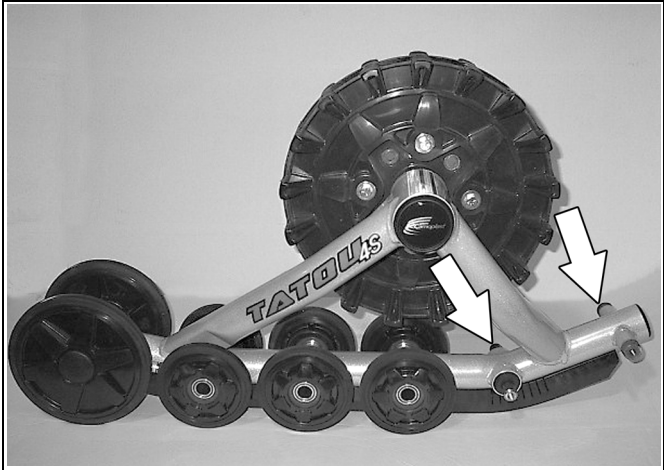


Figure 15

- Install the rubber track (refer to Figure 16).

*NOTE: Compare with the other rubber tracks to find the correct orientation.*

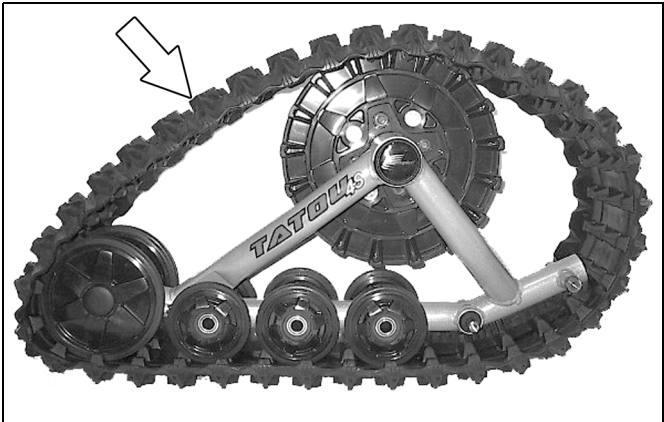


Figure 16

- Re-install 8-in (200-mm) wheels.

## INSTALLATION OF A RUBBER TRACK

---

- If working on rear track systems, re-install the 5-in (132-mm) wheels (refer to Figure 17).

*NOTE: If possible, modify a screwdriver blade as shown on the picture to facilitate the task of inserting the wheels on their shafts. Otherwise, use a No. 2 Phillips screwdriver.*

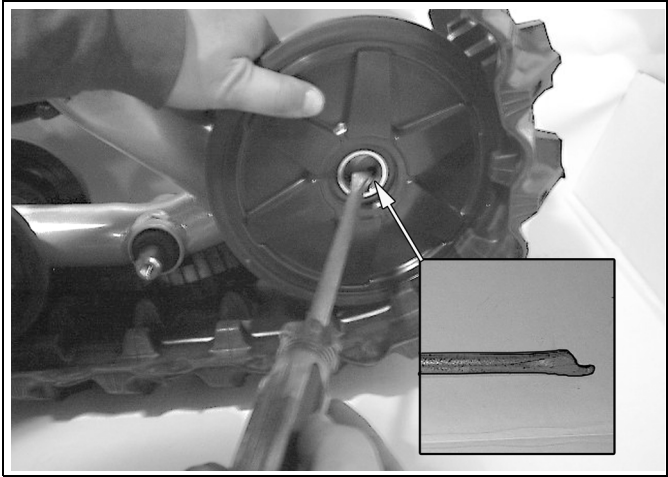


Figure 17

- Adjust track tension. Refer to ‘Rubber track tension’ on page 16.

## MAINTENANCE SCHEDULE

---

## MAINTENANCE SCHEDULE

### **WARNING**

**Do not insert hands or feet into or near the System unless the engine is off, and the vehicle is stopped with the security brake engaged.**

For optimum performance and maximum durability, please refer to the following maintenance grid:

Elements to check and maintain	Frequency	
	Break-in period	After break-in
Rubber track tension	1 hour, 4 hours	20 hours
Bolt torque	1 hour	4 hours
Anti-pivot adjustment	4 hours	20 hours
Alignment (wheel alignment)	N/A	20 hours
Condition of bearings and seal ring wear sleeves (main pivot)	N/A	Once a year
Visual inspection	Before riding	Before riding

Do not use a brake cleaning solvent to clean the track system. This may damage sealing components and stickers.

### **WARNING**

**After extreme environment uses (mud and water) and inspecting all bearings once a year, please note that bearings cannot be re-greased like snowmobile bearings. If they need to be serviced replace the wheel completely. Some of the components (i.e. 5-in (132-mm) wheels) need special tool for servicing. Please use appropriate tools to avoid any damage to your component.**

**TORQUE TABLE**

<b>Dimension / Grade 5</b>	<b>N•m</b>	<b>lbf•in</b>
5/16 - 18	18 - 22	163 - 199
5/16 - 24	20 - 25	180 - 220
3/8 - 16	33 - 40	289 - 353
3/8 - 24	37 - 45	328 - 400
7/16 - 14	52 - 64	462 - 564
7/16 - 20	58 - 71	516 - 630

<b>Dimension / Grade 5</b>	<b>N•m</b>	<b>lbf•ft</b>
1/2 - 13	80 - 97	59 - 71
1/2 - 20	91 - 110	67 - 81
9/16 - 12	116 - 40	85 - 103
9/16 - 18	128 - 158	94 - 116
5/8 - 11	159 - 195	117 - 143
5/8 - 18	180 - 221	132 - 162
3/4 - 10	282 - 344	207 - 253
3/4 - 16	314 - 385	231 - 283

**STORAGE**

The best way to store the System is to lay down each frame on its side, away from direct sunlight.

## WARRANTY

---

## WARRANTY

Camoplast guarantees that the new, unused **Tatou® 4S** System (System) installed by an authorized dealer or distributor is free from any defects in materials and workmanship during the period and in conditions described below. When operating a new **Tatou® 4S** System, the user agrees that the present form is applicable and exclusive, that they have been signified and that they have been accepted by him/her at the time of purchase.

The ATV **Tatou® 4S** track system is covered by a manufacturer warranty (warranty). The warranty covers manufacturing defects related with materials and workmanship. The installation and maintenance of the System is always the responsibility of the owner.

### **PERIOD OF COVERAGE**

The warranty is valid for a period of twelve (12) months following the date of purchase. This warranty does not apply to normal maintenance.

The warranty applies exclusively to parts and components of the track system. All paint defects on the System (frames and components) are not covered.

The warranty is not valid if the System is not installed by an authorized Camoplast network dealer or distributor.

This warranty specifically excludes any damage or breakage to the ATV and related defects on the ATV, whether or not these were caused or believed to be caused by the System.

The manufacturer is not responsible for damages, injuries or loss caused at the time of or after installing of the System on the vehicle.

For a warranty to be valid, the System owner must comply with manufacturer notices and warnings. In addition, all claims must be accompanied by a proof of purchase (original receipt or sale contract) and work or repairs must be performed by an authorized Camoplast dealer. All claims not previously approved and authorized by Camoplast will be rejected.

### **The following situations and items are not under any circumstances covered by the warranty:**

- 1) Any and all consequential damages, including, but not limited to, indirect costs, such as towing, storage, phone calls, renting, transportation, inconveniences, insurance coverage, reimbursement of loss, loss of time and loss of revenue, etc.
- 2) Damage resulting from faulty installation.
- 3) Damage resulting from normal parts wear or progressive deterioration owing to the distance covered with a vehicle on which the System is installed.
- 4) Damage resulting in non-compliance with the user manual and with maintenance instructions recommended in the user's manual and other technical documents.
- 5) Damage resulting in abusive use, abnormal use, negligence or even a use which does not comply with recommendations of the manual, excess

weight or loading, including excessive number of passengers.

6) Labour costs, parts and materials related any and all maintenance costs.

7) Damage resulting from faulty repairs, improper maintenance or any unauthorized changes made to the System other than those specified by the manufacturer or from the installation of non-original or unauthorized parts that were not produced or approved by Camoplast.

8) Damage resulting from an accident, incident, robbery, vandalism, war or unforeseen event or act of God.

9) Regardless of cause, damage resulting from inexperience, driving errors, accident or other incident.

10) The use of the System on a vehicle used for public rental, including by a previous owner, will render this warranty null and void.

11) The use of the System in races, rallies or other competitive events/ activities of this type, at any time, including from a previous owner or in conditions that do not comply with those described by the manufacturer will render the warranty null and void.

Any repaired or replaced components or parts are guaranteed only to the extent of the original warranty. In other words: if a warranted part was replaced after five (5) months, the new replacement part will only be guaranteed for seven (7) months, for a total of twelve (12) months. In no event shall the warranty extend beyond a total of twelve (12) months from the date of original System purchase.

In all cases, the warranty is limited to a maximum of the original purchase price or the fair market value of the System. Camoplast will have final authority in determining the fair market value of a used System. The warranty is applicable within the limits and conditions initially provided for in if the System is determined to be unusable due to accident or improper repair, the warranty will be considered null and void without further recourse available to the System owner.

The manufacturer, the retailer and / or the repair shop shall not be held responsible for any delays caused by material, parts or components availability or backorder.

\*Shipping and handling costs, as well as any fees related with shipping or transportation of the System to the dealer location are the responsibility of the System owner.

Camoplast reserves its sole and exclusive right to update or modify this warranty without impact on end users. All previous terms and conditions of the warranty at time of purchase will be respected.

## SERIAL NUMBER LOCATION

---

## SERIAL NUMBER LOCATION

The following pictures show the location of the serial numbers on the track system frame and rubber track.



Figure 18





## **TECHNICAL SUPPORT**

If your dealer or distributor is unable to solve a problem related with the System, you may contact the Camoplast support team from Monday to Friday from 8:00 a.m. to noon and 1:00 to 5:00 p.m. (Eastern Standard time) by dialing 1-866-533-0008 or 819-533-0008.

E-mail: [atvtracksystems@camoplast.com](mailto:atvtracksystems@camoplast.com)

Website: [www.camoplast.com](http://www.camoplast.com)

Postal Address: 1701, 3<sup>rd</sup> Avenue, Grand-Mère, QC (Canada)  
G9T 2W6