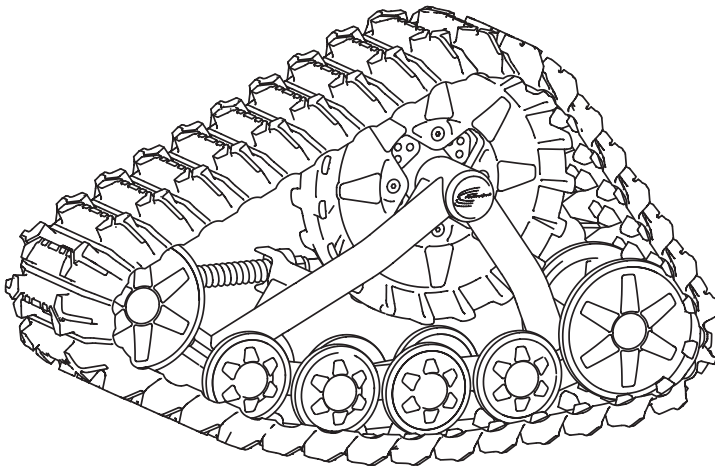


USER'S MANUAL

Camoplast **TATOU[®] 4-S**



IMPORTANT!

Please read carefully each part of this document as well as the model specific annex prior to assemble, install and use the **Tatou[®] 4S** System.

TABLE OF CONTENT

INTRODUCTION	3
GENERAL INFORMATION	3
INSTALLATION	4
APPLICATION	8
MAINTENANCE	8
STORAGE	9
HINTS AND TIPS	9
USER NOTICE AND DISCLAIMER	10
CONDITIONS OF WARRANTY	13
TECHNICAL SUPPORT	16
PARTS LISTcentral pages



INTRODUCTION

Thank you for choosing **Tatou 4S®**, an ATV Track System by Camoplast (hereinafter referred to as the "System"). You have made the right choice. This System will provide you with all the traction, performance, and durability that you need for your recreational needs or to properly complete your work all year round.

GENERAL INFORMATION

Note: Throughout this document there are explanations shown as visual symbols. Be aware that these indicate the presence of risks and dangers.

- Review of symbols

	<p>Identifies an instruction which, if not followed, can cause severe injury.</p>
	<p>Identifies an instruction which indicates a risk of breakage to the System or ATV, which could lead to void the Warranty.</p>

All figures, information or photos presented in this document are up to date at the time of publication. However, they may change without notice.

Read the ATV user manual carefully. Its content remain applicable after the installation of the System.

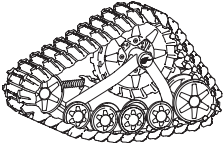
This document should be read by every person who drives the ATV equipped with the System.

This document is an integral part of the System. Pass it along to any new System owner.

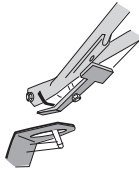
Consult legal authorities where you drive your ATV equipped with the System before usage to ensure you that you respect all applicable laws and regulations.

ATV Track Systems are designed to reduce ground pressure and increase vehicle's traction. However, during normal operating conditions, vehicle speed will be reduced, as compared to a wheeled vehicle.

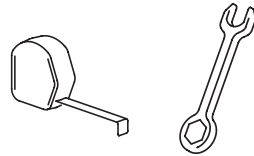
INSTALLATION



1- Frame



2- Suspension brackets
(see Annex)



3- Tuning

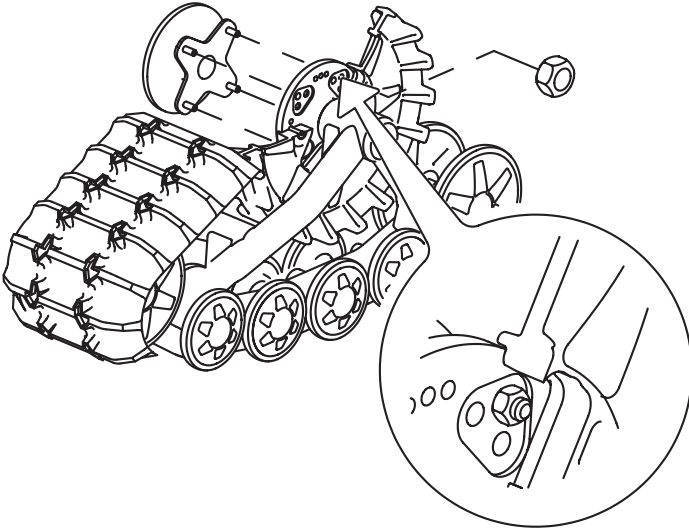
- **FRAME**

To proceed with this System installation, you must follow good shop practice. The place where you will be working into shall be clean, bright and well ventilated. Also, prior to the installation, you must turn off the ignition, shift gear to neutral and remove key from contact. If you are to use a floor jack, never use it as a stand. Always use appropriate stands. To avoid vehicle movement during maneuvers, place blocks behind the wheels that remain in contact with the ground.

Those recommendations will stay much important while proceeding with disassembly.

To disassemble, follow installation steps in a reverse order. For proper frame installation, observe the sticker on the top of the main axle.

Once you have sorted contents, frames and the wheels have been removed, mount the frame directly on the flange or vehicle by the hub using the same studs used to bolt the wheel. Afterwards re-tighten each nut to the torque specified by the manufacturer of your ATV. See following figure:



Caution, if you are the owner of a track system equipped with a multi-models hub, there are 3 groups of 4 holes (100, 110 and 136 millimeters), all on a different bolt circle. You must not use excessive force to pass the pins through. If you find it difficult to mount the hub, it is probably on the wrong bolt circle, and you should try another set of holes.

While the ATV is on a lift table, turn the frames around their pivot to make sure there is no contact between the track and step or the mud-guards. If there is contact, then the parts must be modified to avoid direct contact between the ATV and the tracks.

- **BRACKETS**

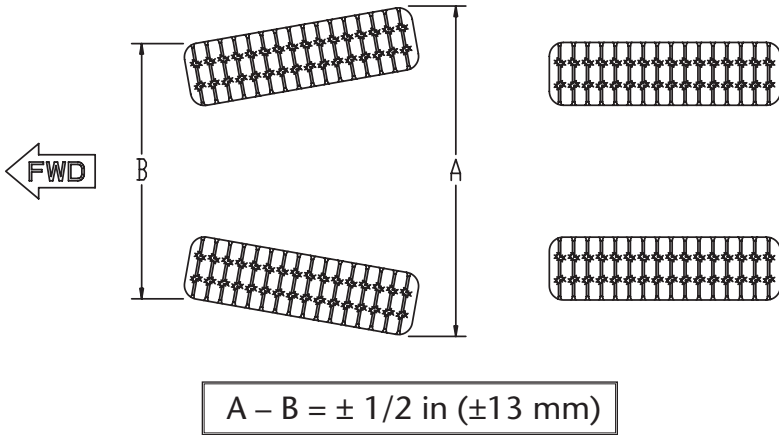
*Refer to vehicle specific annex for this step of installation.

• TUNING

Before the tuning, roll the ATV forward for about 3 meters (10 feet) and force the suspension to bounce a few times to stabilize the frame.

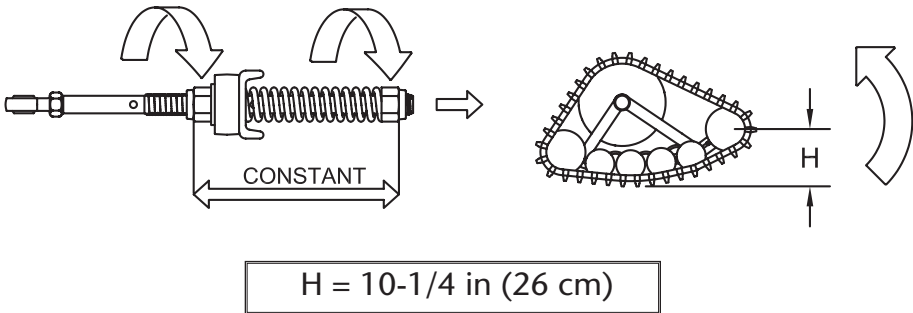
1. ALIGNMENT (PARALLELISM)

The parallelism should be adjusted with a negative opening of 1/2 inch (13 millimeters). See following figure.



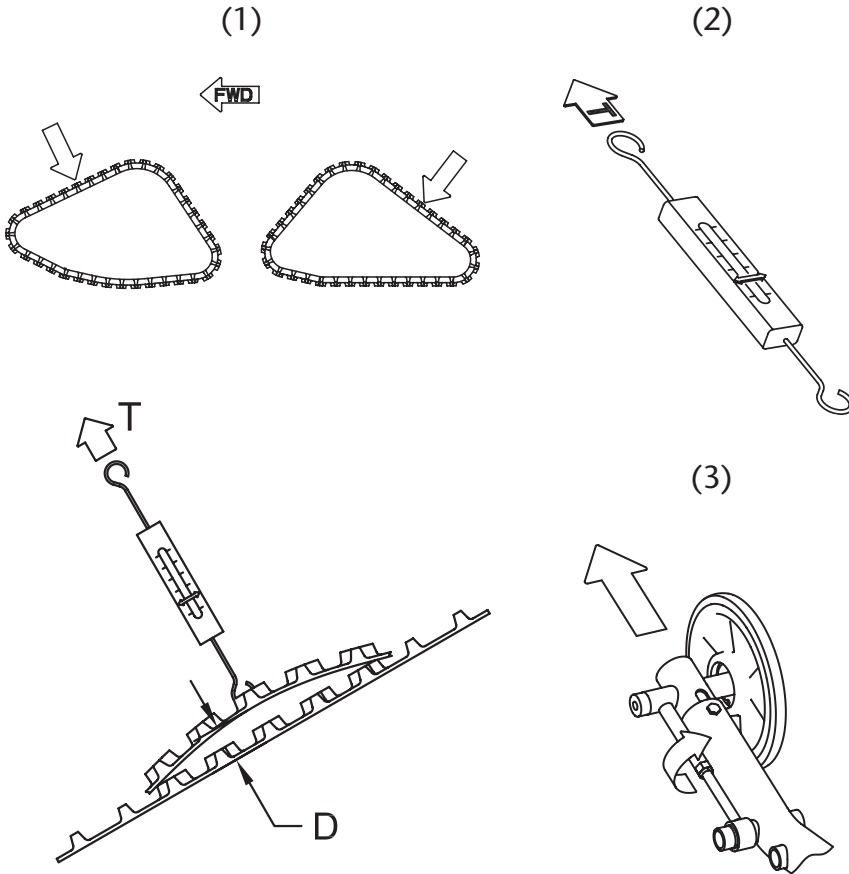
2. CASTER

Measure the height (H) of the first axle of the frame beforehand, if it is outside the specification, correct it, as shown below:



3. TRACK TENSION








Correct/adjust the deflection (**D**) to the tracks (1) with a strap tension gauge (2), measure the tension (**T**), correct as needed by turning the nut of the tensioner.




$D = 3/4 \text{ in (19 mm)}$

$T = 20 \text{ lb (9 kgf)}$

APPLICATION

	The driving characteristics of your ATV will change with the installation of the System.
	Always observe your ATV manufacturer's rules and regulations Example: Carrying passengers, loading charge limit, ect.
	Before departure, make sure the wheels are not stuck or jammed in place.
	Before departure, remove any accumulated ice inside the tracks.
	The ATV equipped with the System must never be used for the following: Races, rally, jumps, stunts, acrobatics or other extreme driving or applications.
	Adapt your driving to the surrounding conditions (Weather, traffic, etc.) and according to your driving abilities.
	While riding in a group, warn people that will circulate behind a vehicle that is equipped with a track system. Tracks might throw dangerous objects toward following vehicle. Take particular care to this warning on « rocky » trails.

MAINTENANCE

	Do not insert hands or feet into or near the System unless the engine is off, and the vehicle is stopped with the security brake engaged.
---	---

For optimal performance and maximal durability, please refer to the following maintenance grid:

Elements to check and maintain	Frequency	
	Breaking- in period	After breaking-in
Track tension	1 hr, 4 hrs	20 hrs
Check tightening of bolts	1 hr	4 hrs
Adjustement of anti-pivots	4 hrs	20 hrs
Check alignment (parallelism)	Not applicable	20 hrs
Inspect all bearings and the seal ring wear sleeves (main pivot) I	Not applicable	Once per year
Visual inspection	Before each ride	Before each ride

Refer to this manual central reference section for visual guide.

STORAGE



Do not leave any System components on vehicle (ATV), when using ATV with tires

The best way to store the System is to lay down each frame on its side, away from direct sun light.

HINTS AND TIPS

Before riding or leaving on an excursion, make sure you have the following within arms reach:

2 keys 9/16 inch (or 15 mm) • 1 key 5/8 inch (or 16 mm)
1 axe • 1 shovel • 1 tow cable

Generally, the slower you go, the better the traction will be.

For riding or excursions in unknown terrain, make sure you have a cellular phone or satellite phone, a first aid kit and spare parts in your possession.

When circulating off trail, always be caution of the presence of hidden obstacles.

When circulating in deep snow, do not intentionnally skid on it with the System. (Tracks keeping on turning while vehicle does not). This could cause the vehicle to get stuck.

USER NOTICE AND DISCLAIMER

The **Tatou 4S**[®] System was, initially, designed to be used in winter conditions and was then adapted to be used in fall and spring conditions.

This document holds important information regarding driving an ATV equipped with **Tatou 4S**[®] System by Camoplast, it is mandatory that every user take the time to carefully read, understand and then consult this reference manual and user guide as well as the ATV owner's manual as needed. When purchasing either a new or used track System, the user must obtain all documentation related to the System including manuals and guides related to the ATV on to which the System is installed. If need be, contact the Camoplast products dealer nearest to you to obtain any additional information. You may also, consult Camoplast's Website at www.camoplast.com, and communicate with our technical support hotline at 1 866-533-0008 or 819-533-0008 or by e-mail at : atvtracksystems@camoplast.com.

Camoplast believes there are certain risks related to the installation and utilization of the System. Our experience shows that the System is safe, however the user must be aware of the risks related to driving an ATV with the particularities of this type of System. The ATV driver must, at all times, respects all applicable laws and regulations, the

The installation of a System:

- 1) Increases ground clearance
- 2) Raises the center of gravity
- 3) Increases the ATV width and weight
- 4) Reduces ground pressure (psi(kgf/ m²)).

These parameters will effectively change the driving characteristics of an ATV equipped with the System.

Consequentially, it is highly recommended that the user adapts his driving style in function of the new characteristics parameters, mentioned above. The driver must always use caution when he crosses obstacles, circulates through narrow paths, meets vehicles coming in the opposing direction, etc.

As it was designed, the System may considerably reduce the ATV top speed and can falsify the speedometer. Generally the System transmission wheel diameter is less than the tire, therefore the vehicle speed will be less than that actually displayed. Whether the ATV is equipped or not with the System, users must always adapt the speed to actual driving conditions. Users must never exceed speed limits or drive faster than their capacities allow. Excessive speed remains one of the main causes of severe accidents on ATVs.

Camoplast is proud to offer ATV conversion kits within its wide range of products, ATV Track Systems are not only reliable, but safe. However, there are risks inherent to driving an ATV equipped with the System. It is, therefore, very important that any driver familiarizes himself with proper driving techniques of an ATV equipped with a System, and that he adapts his driving to his level of experience and continually evaluates operating conditions and terrain to safely and efficiently make the best of these Camoplast ATV Track Systems.

CONDITIONS OF WARRANTY

Camoplast guarantees that the new, non used **Tatou 4S**[®] System (System) installed by an authorized dealer or distributor is exempt of all defects in materials and workmanship during the period and with the conditions described below. In operating a new **Tatou 4S**[®] System, the user agrees that the present form is applicable and exclusive, that they have been signified and that they have been accepted by him/her at the time of purchase.

The ATV **Tatou 4S**[®] Track System is covered by a manufacturer Warranty (Warranty). The Warranty covers manufacturing defects related to materials and workmanship. The installation and maintenance of the System is always the responsibility of the owner.

- PERIOD OF COVERAGE

The Warranty is valid for a period of twelve (12) months following the System's date of purchase. This Warranty is not applicable to normal maintenance.

The Warranty applies exclusively to the the parts and components of the Track System. All paint defects on the System (Frames and components) are excluded.

The Warranty is not valid if the System is not installed by an authorized Camoplast network dealer or distributor.

This Warranty specifically excludes any damage or breakage to the ATV and related defects on the ATV, wether or not these were caused or inferred to be caused by the System are not covered.

The manufacturer is not responsible for damages, injuries or loss caused at the time of or after the installation of the System on their vehicle.

For a Warranty to be valid, it is compulsory that the System owner conforms to manufacturer notices and warnings. In addition, all claims must be accompanied by a proof of purchase (original receipt or sale contract) and work or repairs must be made by an official Camoplast authorized. All claims not previously approved and authorized by Camoplast will be denied.

The following situations and items are not under any circumstances covered by the Warranty:

- 1) Damage resulting from faulty installation;
- 2) Damage resulting in non-respect of the user manual, and of maintenance figuring in the users manual and other technical documents;
- 3) Damage resulting from normal parts wear, or progressive deterioration deriving from the distance covered with a vehicle on which the System is installed;
- 4) Regardless of cause, damage resulting from inexperience, driving errors, from accident or other incident;
- 5) Damage resulting in abusive use, an abnormal use, negligence or even a use which does not conform to the recommendations of the manual, excess weight or loading including excessive number of passengers;
- 6) Labor costs, parts and materials related to any and all maintenance costs;
- 7) Damage resulting from faulty repairs, improper maintenance, or, any unauthorized changes brought to the System other than those specified by the manufacturer or by the installation of non original or authorized parts that were not produced, or approved by Camoplast;

- 8) Damage resulting from an accident, incident, robbery, vandalism, war or unforeseen event or act of God;
- 9) Any and all consequential damages, including but not limited to indirect costs, such as towing, storage, phone calls, renting, transportation, inconveniences, insurance coverage, reimbursement of loss, loss of time and loss of revenue, etc.
- 10) The use of the System on a vehicle used in for public rental, including by a previous owner, will render this Warranty nul and void;
- 11) The use of the System in races, rallies or other competitive events/activities of this type, at any time, including from a previous owner or in non conforming conditions of those described by the manufacturer will render the Warranty nul and void;

Any repaired or replaced components or parts are guaranteed only to the extent of the original warranty. IE: if a warranted part was replaced after five (5) months, the new replacement part will only be guaranteed for and additional seven (7) months, for a total of twelve (12) months. In no event shall the Warranty extend beyond a total of twelve (12) months from date of original System purchase.

In all cases, the Warranty is limited to a maximum of the original purchase price or the fair market value of the System. Camoplast will have final authority in determining the fair market value of a used System. The Warranty is applicable within the limits and conditions initially contracted, in the case that System is determined to be unusable due to accident or improper repair, the Warranty will be considered nul and void without further recourse available to the System owner.

indications of the System manufacturer and the indications from the vehicle manufacturer fixed by law, notably when age restrictions exist and ATV base equipment are required (headlights, flashers and break lights, rearview mirror, etc.). The user must always wear adequate safety equipment, such as a helmet, safety glasses (or visor), protective clothing, boots and gloves. It is understood that driving while impaired or intoxicated presents a danger for the ATV user and others and is against the law.

The System consists of many moving parts, including transmission wheels. If an object lodges itself or becomes jammed into the System and blocks the track, it is mandatory to stop the engine and the vehicle and engage the security brake before removing the object in question. By avoiding to do so, the user exposes himself to sudden movement of the ATV or to breakage of a part or component coming from the System, which could cause severe injuries. It is also very important to wear full length cloths and always avoid hanging or strinsy accessories.

Driving an ATV equipped with such System requires particular precautions and a knowledge of proper driving techniques of such vehicles. An evaluation by the user of the conditions and terrain (state of the ground, grade of hill, density of snow, ect.) is equally essential. An ATV equipped with a System cannot compete and/or be used to perform stunts, acrobatics or other exploits, as these could result in loss of control or severe injuries.

Insufficient knowledge of an ATV, during down hill riding, climbs and and crossing of obstacles and turns can result in tipping or rollover, and can cause severe injuries.

Carrying a passenger, a load or attaching a tow are factors which can cause the ATV to be less stable, and affect the drivability. Unless otherwise prescribed by law and by the manufacturer of the ATV, you must not carry a passenger, loads, or tow any objects.

The manufacturer, the retailer and / or the repair shop shall not be held responsible for any delays caused by materials parts or components availability or backorder.

*Shipping and handling costs, as well as any fees related to shipping or transportation of the System to the dealer location are the responsibility of the System owner.

Camoplast reserves its sole and exclusive right to update or modify this Warranty without impact to end users; all previous terms and conditions of the Warranty at time of purchase will be respected.

TECHNICAL SUPPORT

In the event that your dealer or distributor is unable to resolve a problem related to the System, you may contact the Camoplast support team from Monday to Friday between 8:00 a.m. to noon and 1:00 to 5:00 p.m. (Eastern Standard time) by dialing 1 866-533-0008 or 819-533-0008.

E-mail: atvtracksystems@camoplast.com

Website: www.camoplast.com

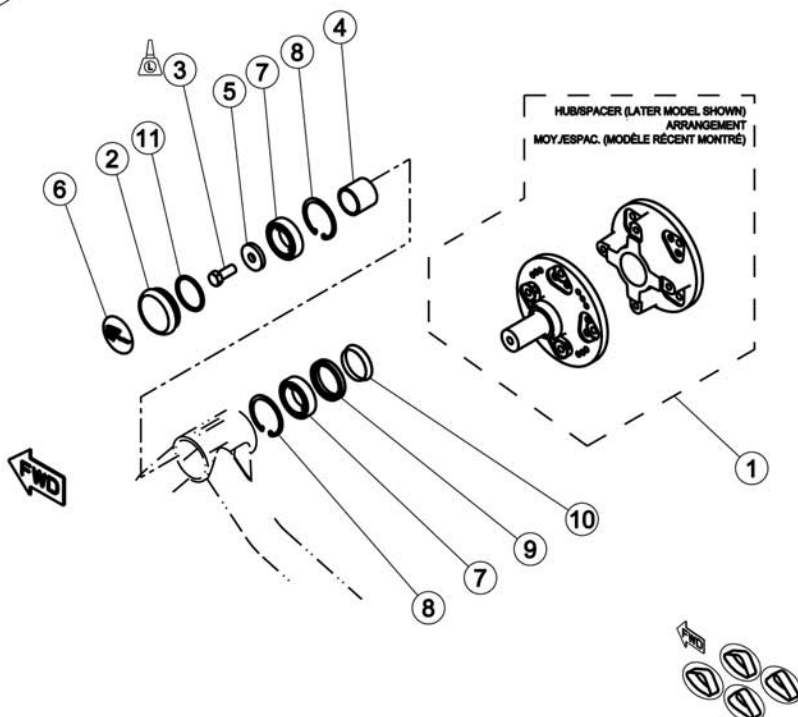
Postal Address: 1701, 3rd Avenue, Grand-Mère, Qc (Canada) G9T 2W6

©2007 Camoplast Inc. All rights reserved. ® and ™ are trademarks of Camoplast Inc. Camoplast Inc. reserves the right to change or discontinue any specifications, designs, features, models or accessories.

LISTE DE PIÈCES / PARTS LIST

1

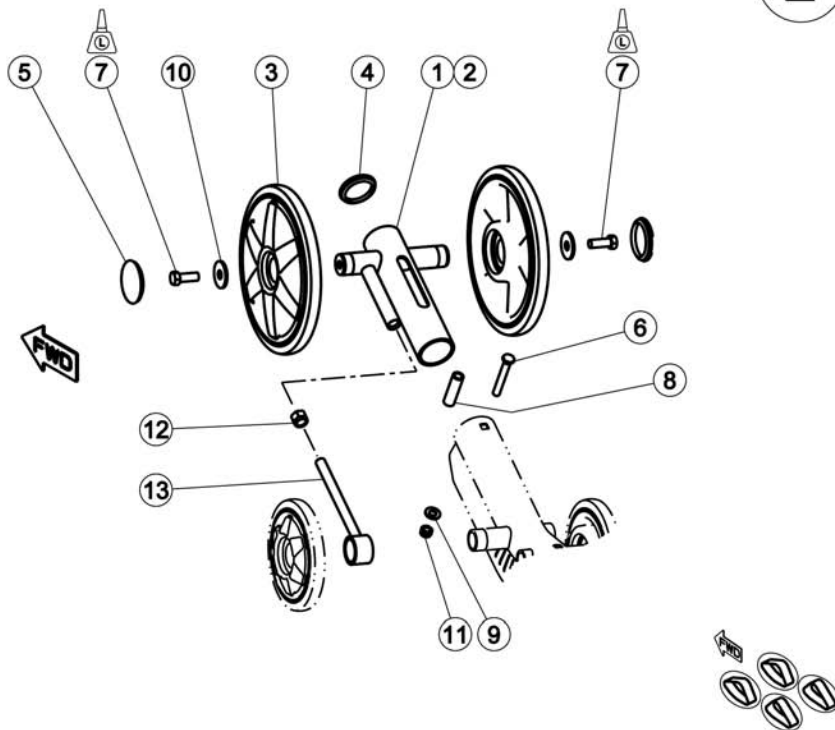
ENSEMBLE MOYEU / HUB ASSEMBLY



Item	Part #	Description	Qty
1	-----	CONTACTER VOTRE CONCESSIONNAIRE // CONTACT YOUR DEALER	1
2	1017-00-7000	BOUCHON, PIVOT PRINCIPAL // HUB CAP	1
3	1044-00-0001	VIS TÊTE HEX 1/2-13 NC X 1-1/4" L. // HEX.HEAD.SCR. 1/2-13 NC X 1-1/4" L.	1
4	1051-00-0037	ESPACEUR INTÉRIEUR // INTERNAL SPACER	1
5	1061-00-0001	RONDELLE ÉPAISSE 1/2" DIAM. NOM. // WASHER 1/2" DIAM. NOM.	1
6	1083-00-7003	EMBLÈME CAMOPLAST // CAMOPLAST LOGO	1
7	1090-00-0001	ROULEMENT À BILLES SCELLÉ, 6007 2RS1 // 6007 2RS1 BALL BEARING, SEALED	2
8	1091-00-7000	BAGUE DE RETENUE // 62 mm INT. SNAP RING	2
9	1093-00-7002	JOINT ÉTANCH. DBLE 50.0x62.0x10.0 TC // DBL. LIPS SHAFT SEAL 50.0x62.0x10.0 TC	1
10	1093-00-7003	CHEMISE D'USURE POUR JOINT D'ÉTANCH. // SLEEVE FOR SHAFT SEAL APPLIC.	1
11	1093-00-7004	JOINT TORIQUE, 56 O.D. x 48 I.D. x 4, NBR 70 // O-RING, 56 O.D. x 48 I.D. x 4, NBR 70	1

ENSEMBLE TENSIONNEUR DE CHENILLE / TRACK TENSIONER ASSEMBLY

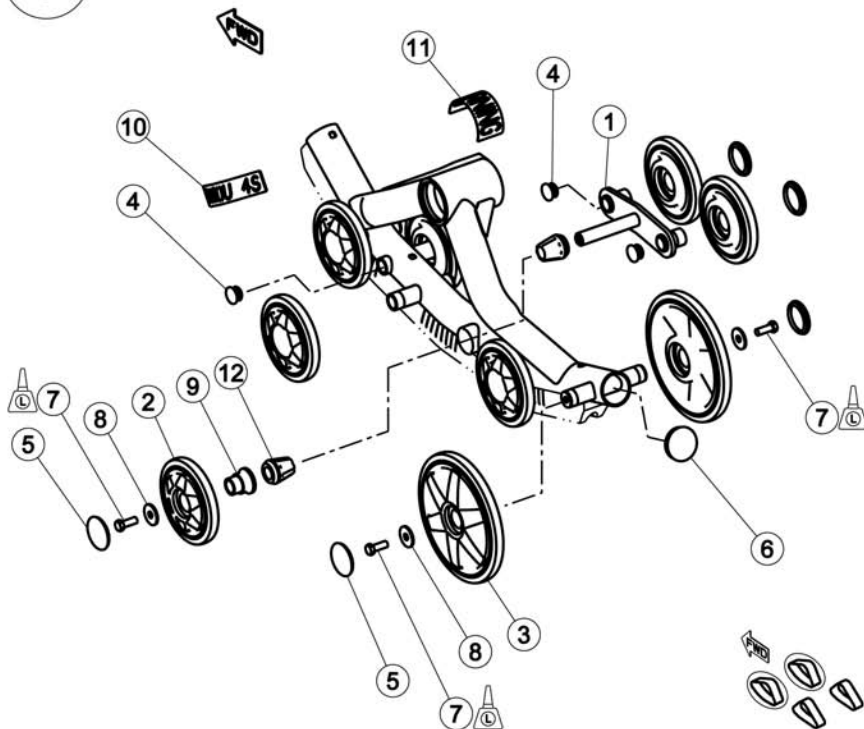
2



Item	Part #	Description	Qty
1	1014-00-7021	TENSIONNEUR DE CHENILLE, NOIR // TRACK TENSIONER, BLACK	1
2	1014-00-7025	TENSIONNEUR DE CHENILLE, GRIS // TRACK TENSIONER, SILVER	1
3	1016-00-0200	ROUE 200 mm CAOUT. UHMW // 200 mm RUBBERIZED UHMW WHEEL	2
4	1017-00-0001	BOUCHON 1 LÈVRE, TUBE 1-3/4" D.I. // 1 LIP CAP, FOR 1-3/4" I.D. TUBE	1
5	1017-00-0009	BOUCHON 1 LÈVRE, TUBE 2" D.E. // 1 LIP CAP, FOR 2" O.D. TUBE	2
6	1040-00-0002	VIS HEX. À COLLET CARRÉ, 5/16-16 NC X 3" L. // HEX.HEAD.SCR. 5/16-16 NC X 3" L.	1
7	1041-00-0012	VIS TÊTE HEX. 3/8-16 NC X 1" L. // HEX.HEAD.SCR. 3/8-16 NC X 1" L.	2
8	1051-00-0015	ENTRETOISE, TENSIONNEUR // BUSHING, TENSIONNEUR	1
9	1060-00-0001	RONDELLE 5/16 x .060 // WASER 5/16 x .060	1
10	1060-38-0114	RONDELLE 3/8 DIA. NOM. // WASHER 3/8 DIA. NOM.	2
11	1070-00-0001	ÉCROU HEX. NYLON 5/16-18 UNC // NYLON LOCKNUTS 5/16-18 UNC	1
12	1070-00-0006	ÉCROU HEX NYLON 7/16-14 UNC // NYLON LOCKNUTS 7/16-14 UNC	1
13	1082-00-7000	TIGE DE TENSIONNEUR // TENSIONNER ROD	1
14	1093-07-0007	RONDELLE-CAOUTCH. ANTI-ROTATION // ANTI-ROTATION RUBBER BUMPER, BONDED	1

3

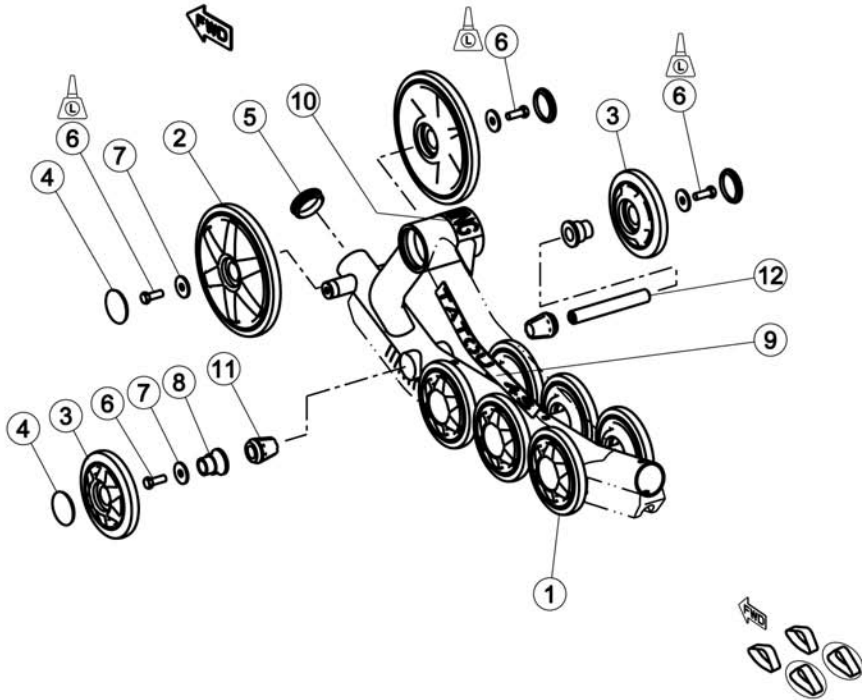
ENSEMBLE CADRE AVANT -A- / FRONT FRAME ASSEMBLY -A-



Item	Part #	Description	Qty
1	1015-00-7000	STABILISATEUR // STABILIZER	1
2	1016-00-0132	ROUE 132 mm CAOUT. UHMW // 132 mm RUBBERIZED UHMW WHEEL	7
3	1016-00-0200	ROUE 200 mm CAOUT. UHMW // 200 mm RUBBERIZED UHMW WHEEL	2
4	1017-00-0005	BOUCHON 2 LÈVRE, TUBE .760 D.I. // 2 LIPS CAP, FOR .760 I.D. TUBE	6
5	1017-00-0009	BOUCHON 1 LÈVRE, TUBE 2" D.E. // 1 LIP CAP, FOR 2" O.D. TUBE	9
6	1017-00-0010	BOUCHON 2 LÈVRES, TUBE 2" D.E. // 2 LIP CAP, FOR 2" O.D. TUBE	1
7	1041-00-0012	VIS TÊTE HEX. 3/8-16 NC X 1" L. // HEX.HEAD.SCR. 3/8-16 NC X 1" L.	3
8	1060-38-0114	RONDELLE 3/8 DIA. NOM. // WASHER 3/8 DIA. NOM.	3
9	1082-00-7001	AXE DE ROUE, STABILISATEUR // WHEEL AXLE, STABILIZER	1
10	1083-00-7000	AUTOCOLLANT TATOU 4-S // TATOU 4S DECAL	1
11	1083-00-7002	AUTOCOLLANT D'AVERTISSEMENT // WARNING STICKER	1
12	1093-00-7000	CÔNE DE CAOUTCHOUC // RUBBER CONE, STABILIZER	2

ENSEMBLE CADRE ARRIÈRE -A- / REAR FRAME ASSEMBLY -A-

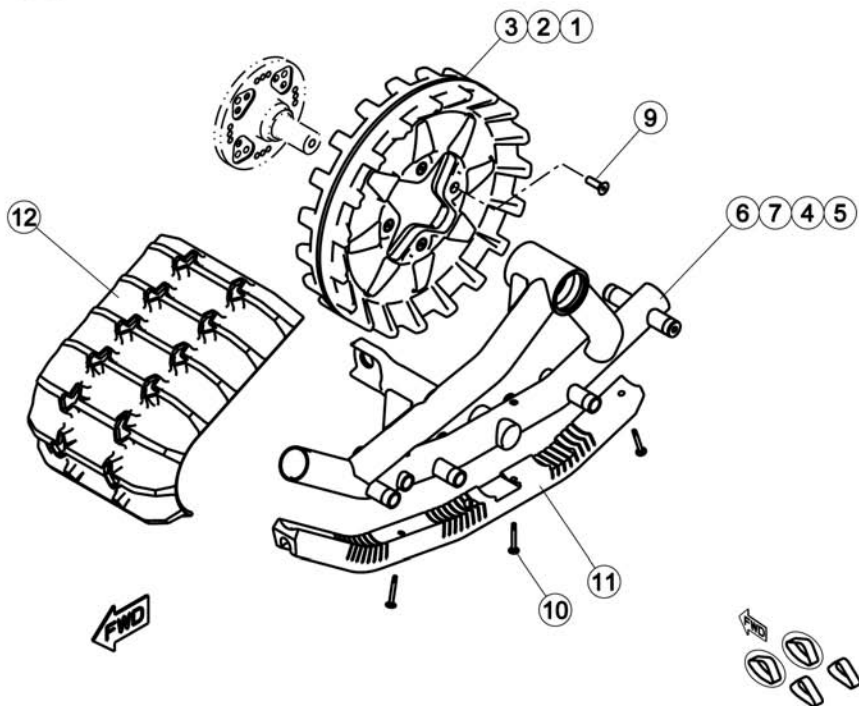
4



Item	Part #	Description	Qty
1	1016-00-0132	ROUE 132 mm CAOUT. UHMW // 132 mm RUBBERIZED UHMW WHEEL	6
2	1016-00-0200	ROUE 200 mm CAOUT. UHMW // 200 mm RUBBERIZED UHMW WHEEL	2
3	1016-00-1132	ROUE 132 mm CAOUT. UHMW, SERV. INT. // 132 mm RUBBERIZED UHMW WHEEL, H. DUTY	2
4	1017-00-0009	BOUCHON 1 LÈVRE, TUBE 2" D.E. // 1 LIP CAP, FOR 2" O.D. TUBE	8
5	1017-00-0010	BOUCHON 2 LÈVRES, TUBE 2" D.E. // 2 LIP CAP, FOR 2" O.D. TUBE	1
6	1041-00-0012	VIS TÊTE HEX. 3/8-16 NC X 1" L. // HEX.HEAD.SCR. 3/8-16 NC X 1" L.	5
7	1080-38-0114	RONDELLE 3/8 DIA. NOM. // WASHER 3/8 DIA. NOM.	5
8	1082-00-7001	AXE DE ROUE, STABILISATEUR // WHEEL AXLE, STABILIZER	2
9	1083-00-7000	AUTOCOLLANT TATOU 4-S // TATOU 4S DECAL	1
10	1083-00-7002	AUTOCOLLANT D'AVERTISSEMENT // WARNING STICKER	1
11	1093-00-7000	CÔNE DE CAOUTCHOUC // RUBBER CONE, STABILIZER	2
12	4000-00-0005	AXE DOUBLE, STABILISATEUR ARR. // AXLE, STABILIZER	1

5

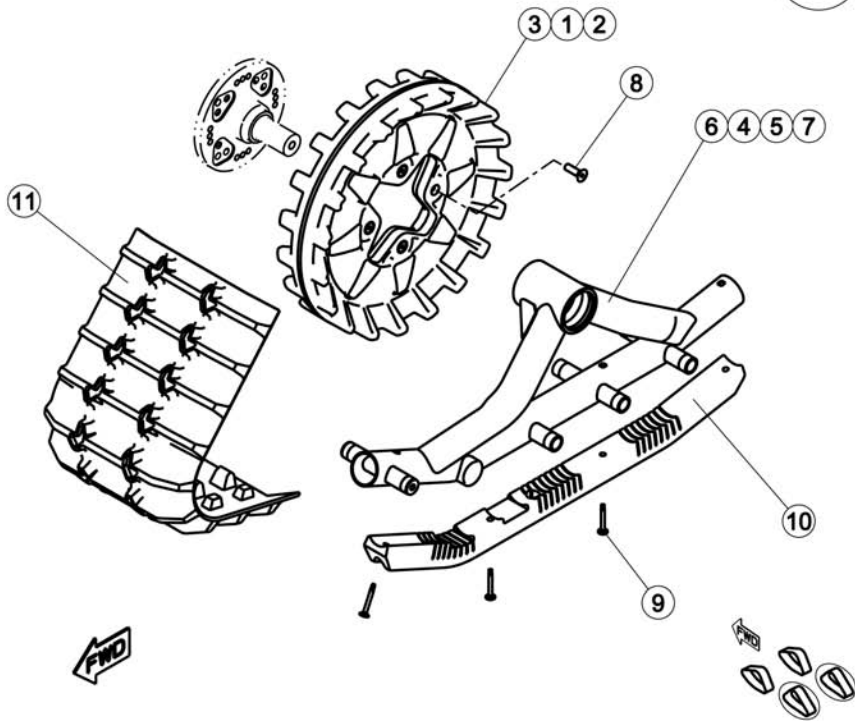
ENSEMBLE CADRE AVANT -B- / FRONT FRAME ASSEMBLY -B-



Item	Part #	Description	Qty
1	1009-00-7017	BARBOTIN, ENTRAIN. INTERNE, 17 DENTS // INTERNAL SPROCKET, 17 TEETH	1
2	1009-00-7018	BARBOTIN, ENTRAIN. INTERNE, 18 DENTS // INTERNAL SPROCKET, 18 TEETH	1
3	1009-00-7019	BARBOTIN, ENTRAIN. INTERNE, 19 DENTS // INTERNAL SPROCKET, 19 TEETH	1
4	1010-00-7021	CHÂSSIS AVANT DROIT - TATOU 4-S, NOIR // RH FRONT FRAME - TATOU 4S, BLACK	1
5	1010-00-7025	CHÂSSIS AVANT DROIT - TATOU 4-S, GRIS MÉT. // RH FRONT FRAME - TATOU 4S, SILVER	1
6	1011-00-7021	CHÂSSIS AV. GAUCHE - TATOU 4-S, NOIR // LH FRONT FRAME - TATOU 4S, BLACK	1
7	1011-00-7025	CHÂSSIS AV. GAUCHE - TATOU 4-S, GRIS MÉT. // LH FRONT FRAME - TATOU 4S, SILVER	1
8	1017-00-0005	BOUCHON 2 LÈVRE, TUBE .760 D.I. // 2 LIPS CAP, FOR .760 I.D. TUBE	2
9	1049-00-0001	VIS TÊTE FRAISÉE 3/8-16 NC X 1-1/4"L. // FLAT.HD.CAP.SCR. 3/8-16 NC X 1-1/4"L.	4
10	1049-00-0004	VIS AUTO-PERÇ. TÊTE CARRÉE, #12-24 x 2" // SQ. SKT. WAFER HEAD SCR., #12-24 x 2"	3
11	1085-00-7000	GUIDE DE CHÂSSIS // TRACKFRAME GUIDE	1
12	1093-00-7001	CHENILLE FLEXTRACK, TATOU 4-S // FLEXTRACK, TATOU 4-S	1

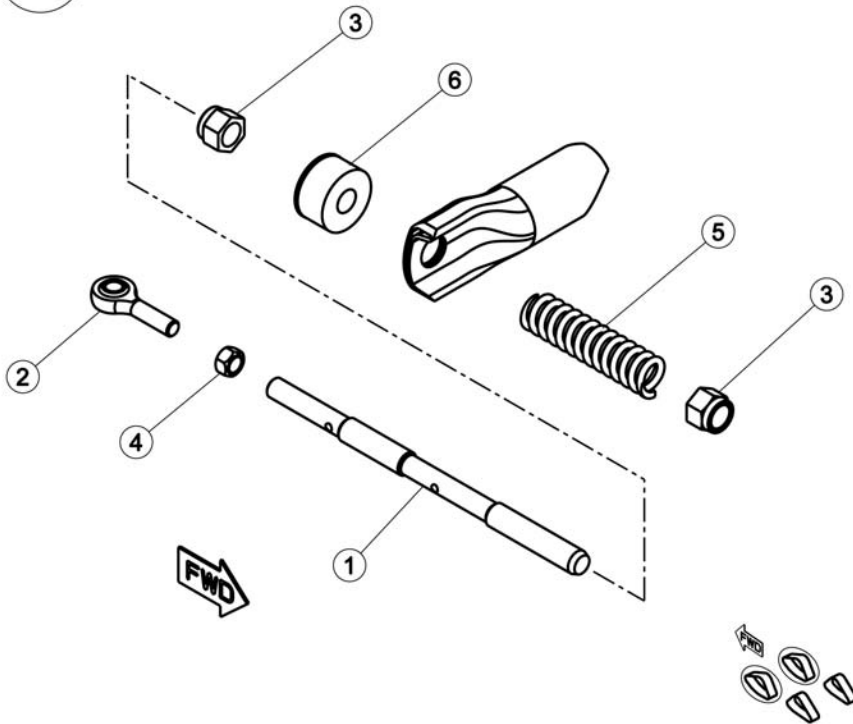
ENSEMBLE CADRE ARRIÈRE -B- / REAR FRAME ASSEMBLY -B-

6



Item	Part #	Description	Qty
1	1009-00-7017	BARBOTIN, ENTRAIN. INTERNE, 17 DENTS // INTERNAL SPROCKET, 17 TEETH	1
2	1009-00-7018	BARBOTIN, ENTRAIN. INTERNE, 18 DENTS // INTERNAL SPROCKET, 18 TEETH	1
3	1009-00-7019	BARBOTIN, ENTRAIN. INTERNE, 19 DENTS // INTERNAL SPROCKET, 19 TEETH	1
4	1012-00-7021	CHÂSSIS ARR. DROIT - TATOU 4-S, NOIR // RH REAR FRAME - TATOU 4-S, BLACK	1
5	1012-00-7025	CHÂSSIS ARR. DROIT - TATOU 4-S, GRIS // RH REAR FRAME - TATOU 4-S, SILVER	1
6	1013-00-7021	CHÂSSIS ARR. GAUCHE TATOU 4-S, NOIR // LH REAR FRAME- TATOU 4-S, BLACK	1
7	1013-00-7025	CHÂSSIS ARR. GAUCHE TATOU 4-S, GRIS // LH REAR FRAME- TATOU 4-S, SILVER	1
8	1049-00-0001	VIS TÊTE FRAISÉE 3/8-16 NC X 1-1/4"L. // FLAT.HD.CAP.SCR. 3/8-16 NC X 1-1/4"L.	4
9	1049-00-0004	VIS AUTO-PERÇ. TÊTE CARRÉE, #12-24 x 2" // SQ. SKT. WAFER HEAD SCR., #12-24 x 2"	3
10	1085-00-7000	GUIDE DE CHÂSSIS // TRACKFRAME GUIDE	1
11	1093-00-7001	CHENILLE FLEXTRACK, TATOU 4-S // FLEXTRACK, TATOU 4-S	1

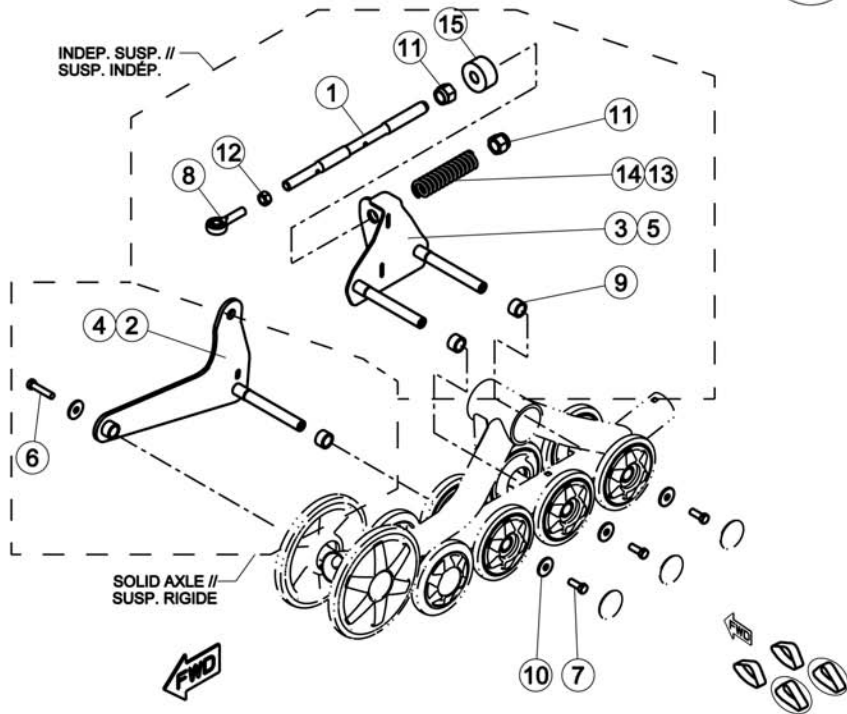
7 ENSEMBLE ANTI-PIVOT AVANT / FRONT ANTI-ROATION ASSEMBLY



Item	Part #	Description	Qty
1	1000-00-7000	TIGE FILETÉE, ANTI-PIVOT // THREADED ROD, ANTI-ROTATION	1
2	1047-00-7000	EMBOUT À ROTULE, ANTI-PIVOT // ROD END, ANTI-ROTATION	1
3	1070-00-0005	ÉCROU HEX. NYLON 3/4-10 UNC // NYLON LOCKNUTS 3/4-10 UNC	2
4	1070-00-0007	ÉCROU 1/2-20 NF // NUT 1/2-20 NF	1
5	1080-00-0004	RESSORT, ANTI-PIVOT // ANTIROTATION SPRING	1
6	1093-07-0007	RONDELLE-CAOUTCH. ANTI-ROTATION // ANTI-ROTATION RUBBER BUMPER, BONDED	1

ENSEMBLE ANTI-PIVOT ARRIÈRE / REAR ANTI-ROTATION ASSEMBLY

8



Item	Part #	Description	Qty
1	1000-00-7000	TIGE FILETÉE, ANTI-PIVOT // THREADED ROD, ANTI-ROTATION	1
2	1015-00-7001	ATTACHE ANTI-PIVOT, ESSIEU RIGIDE // LH, BRACKET ANTI-ROT. (RS)	1
3	1015-00-7002	ATTACHE ANTI-PIVOT GAUCHE (SUSP. IND. ARR.) // LH, BRACKET ANTI-ROT. (IS)	1
4	1015-00-7011	ATTACHE ANTI-PIVOT DROITE, ESSIEU RIGIDE // RH, BRACKET ANTI-ROT. (RS)	1
5	1015-00-7012	ATTACHE ANTI-PIVOT DROIT (SUSP. IND. ARR.) // LH, BRACKET ANTI-ROT. (IS)	1
6	1041-00-0007	VIS TÊTE HEX. 3/8-16 NC X 1-3/4" L. // HEX.HEAD.SCR. 3/8-16 NC X 1-3/4" L.	1
7	1041-00-0012	VIS TÊTE HEX. 3/8-16 NC X 1" L. // HEX.HEAD.SCR. 3/8-16 NC X 1" L.	3
8	1047-00-7000	EMBOUT À ROTULE, ANTI-PIVOT // ROD END, ANTI-ROTATION	1
9	1051-00-7000	ESPACEUR D'AXE, ANTI-PIVOT ARR. // AXLE SPACER, ANTI-ROTATION	3
10	1060-38-0114	RONDELLE 3/8 DIA. NOM. // WASHER 3/8 DIA. NOM.	4
11	1070-00-0005	ÉCROU HEX. NYLON 3/4-10 UNC // NYLON LOCKNUTS 3/4-10 UNC	2
12	1070-00-0007	ÉCROU 1/2-20 NF // NUT 1/2-20 NF	1
13	1080-00-0002	RESSORT ANTI-PIV. POUR MULE // UTV ANTI-ROT. SPRING	1
14	1080-00-0004	RESSORT STANDARD // STANDARD SPRING	1
15	1093-07-0007	RONDELLE-CAOUTCH. ANTI-ROTATION // ANTI-ROTATION RUBBER BUMPER, BONDED	1