

# THINK NEXT GENERATION

We constantly create enhanced tracks and track systems that provide the mobility solutions to help you get the job done. We think next generation.

1801\_AG\_BrochureTrackWheel\_CAT\_8,5X8,5\_EN | Printed in Canada

We are dedicated to our clients and customers. For the AG customer service, contact us toll free at 1 844 CAMSOAG, or 1 317 671-7327, or by email at [Ag.ProductSupport@camso.co](mailto:Ag.ProductSupport@camso.co)

Connect with us for exclusive Road Free content



@camso.co



@camso\_co



@camso\_co



[camso.co](http://camso.co)



FORMERLY  
CAMOPLAST  
SOLIDEAL

## 2018 AGRICULTURAL TRACK AND WHEELS LINEUP FOR CATERPILLAR



FORMERLY  
CAMOPLAST  
SOLIDEAL







## CAMSO AND CATERPILLAR **DRIVING FARMING FORWARD**

Everyday, we ask ourselves: “Is there a better way to drive farming forward?” We believe there is – by providing mobility solutions to help you get the job done.

At Camso, we do it by developing and manufacturing the broadest range of tracks for all farming applications. Camso tracks increase mobility and flotation, and reduce soil compaction.

From field preparation to planting, harvesting and transport, Camso tracks help maximize your work while lowering your operating costs.

**OUR TRACKS ARE THE APPROVED CHOICE  
OF OEM'S, ARE ENDORSED BY DEALERS  
AND RECOGNIZED BY FARMERS.**

DRIVEN BY QUALITY

# PERFORMANCE AND DURABILITY FROM THE INSIDE OUT

## LONGEST LASTING CARCASS

No material displacement during the manufacturing and curing process means:

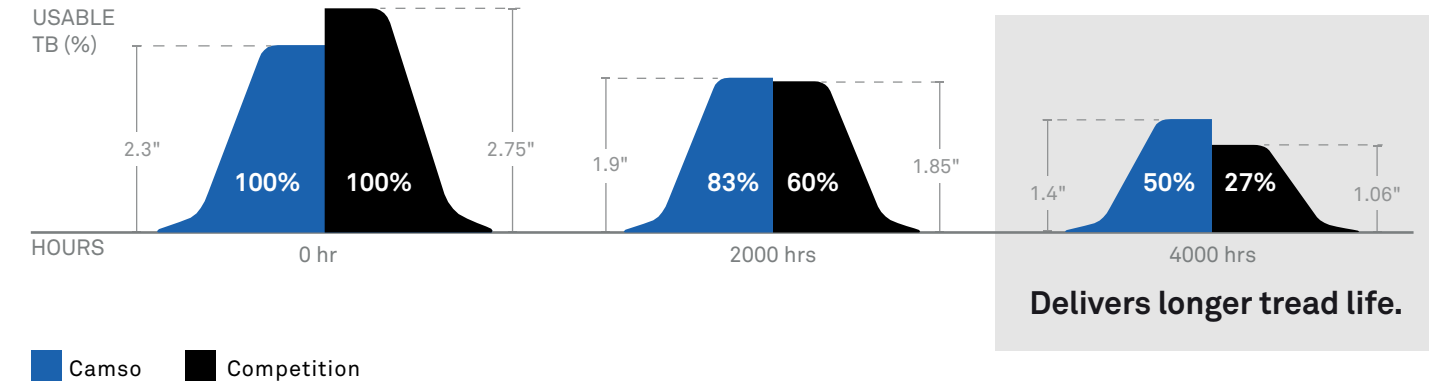
- Track compound types located exactly where you need it
- Uniform tension distribution, eliminating downtime due to carcass tear

THE RESULT: A FINISHED PRODUCT WITH INCREASED DURABILITY AND PERFORMANCE.

## CAMSO TRACKS TREAD LIFE COMPARISON

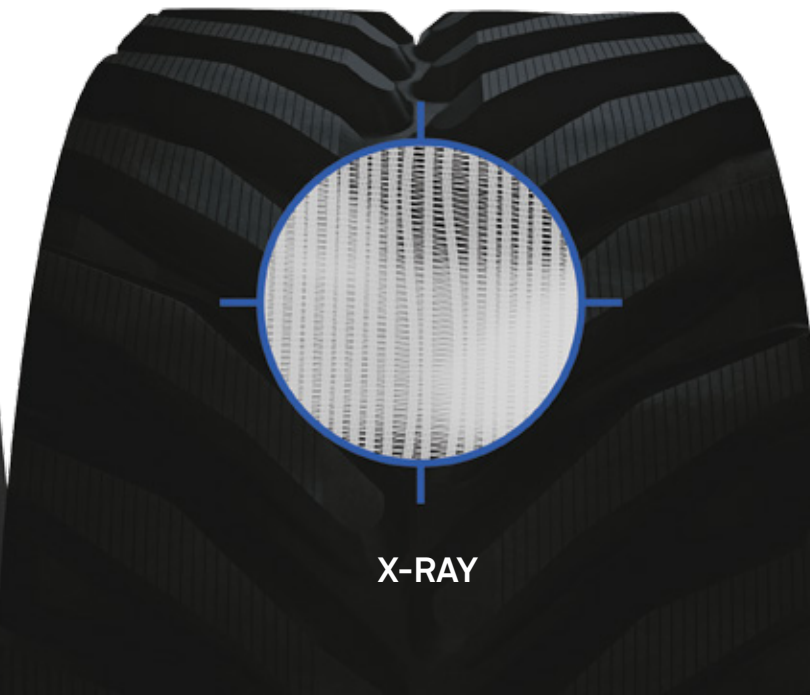
**NEW** CAMSO AG 2500

COMPARATIVE FIELD TESTING  
2.3" CAMSO AG 2500 TREAD BAR VS 2.75" COMPETITION TREAD BAR



CAMSO'S UNIQUE SINGLE CURE PROCESS

COMPETITOR MOLDING PROCESS



CAMSO TRACKS HAVE BETTER TREAD WEAR PROPERTIES WHICH CONTRIBUTE TO LOWER THE COST PER HOUR BY AT LEAST 15%.

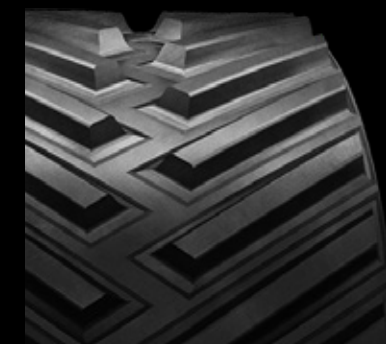


# FRICION DRIVE



# THE RIGHT TRACK FOR YOUR APPLICATION

	APPLICATION	COMPETITIVE BENCHMARK		
		PRICE	PERFORMANCE	RESULTS (AVERAGE)
<p><b>NEW</b></p> <p><b>CAMSO AG 2500</b></p> <p>Competitive performance, for less</p>	STANDARD AG APPLICATIONS			<p>REDUCING YOUR COST PER HOUR BY</p> <p><b>15%</b></p>
		<p>■ CAMSO ■ COMPETITOR</p>		



## CAMSO AG 3500, 4500, 5500 FRICTION DRIVE

High performance, value-driven

When it comes to general tillage and rowcrop applications, get the perfect balance between reliability, quality and price with the Camso AG tracks.

WE'RE COMMITTED TO REDEFINING THE INDUSTRY STANDARD AND HAVE PRODUCTS THAT RESPOND TO THE EVOLUTION OF FARMING EQUIPMENT.



NEW

# CAMSO AG 2500 FRICTION DRIVE

## Competitive performance for less

The next generation of tracks for standard Ag applications. Engineered to perform as well as competitor products at a lower price point. The Camso AG 2500 track series is built with the same process, standards and quality you expect from Camso products.

PERFORMANCE  
DURABILITY



TRACTION



FLOTATION



## High-grade rubber compounds

Maximizes performance and durability

- Specifically engineered compounds for treads, carcass and guide lugs

## Maximized guide lug geometry

Provides optimal guiding surface

- Guide lug geometry designed to OEM specifications

## Versatile tread bar

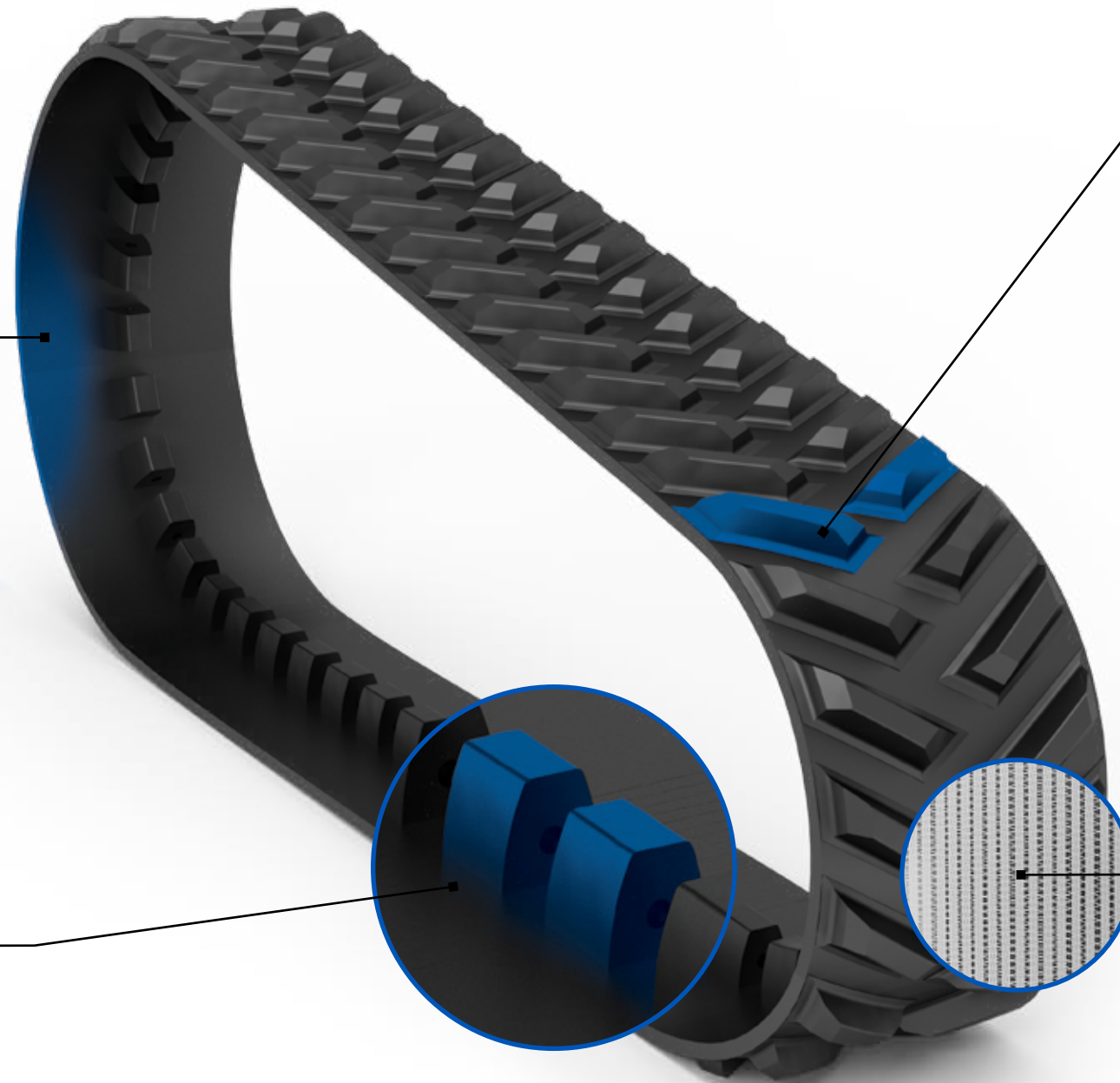
Provides optimal traction and ride quality

- 25% longer lasting than competition

## Longest lasting carcass

No material displacement during the manufacturing and curing process means :

- Track compound types located exactly where you need it
- Uniform tension distribution, eliminating downtime due to carcass tear



# CAMSO AG 3500, 4500, 5500 FRICTION DRIVE

## High performance, value-driven

When it comes to general tillage and rowcrop applications, get the perfect balance between reliability, quality and price with the Camso tracks.

### High-grade rubber compounds

Maximizes performance and durability

- Specifically engineered compounds for treads, carcass and guide lugs

### Maximized guide lug geometry

Provides optimal guiding surface

- Guide lug geometry designed to OEM specification
- Increased side load resistance compared to 2500

### Versatile tread bar

Provides optimal traction and ride quality

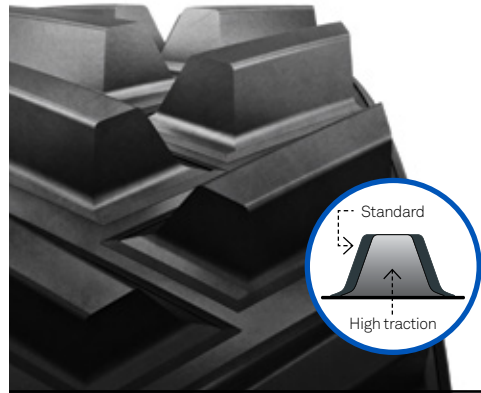
- Balance between traction, cleanout and flotation

### Longest lasting carcass

No material displacement during the manufacturing and curing process means:

- Track compound types located exactly where you need it
- Uniform tension distribution, eliminating downtime due to carcass tear

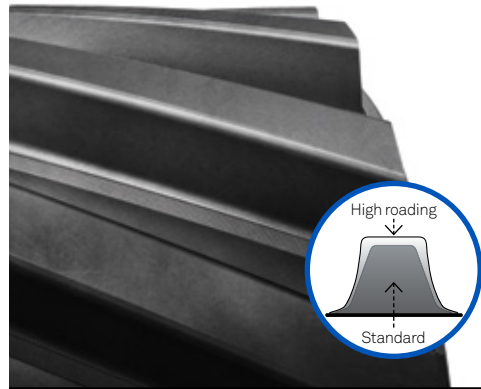
SPECIALTY APPLICATIONS  
**FRICITION DRIVE**



CAMSO  
**HIGH TRACTION**

Designed for superior traction and cleanout capability

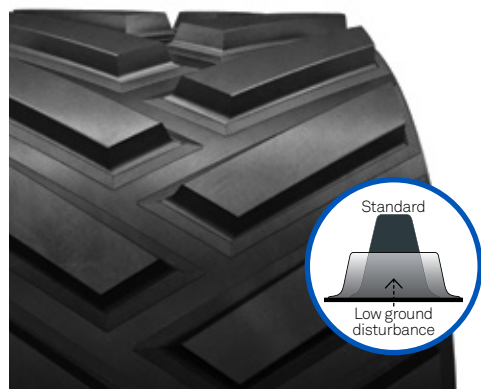
- Better soil penetration in any ground conditions
- Provides excellent cleanout in muddy settings
- Reduces slippage in poor footing conditions



CAMSO  
**HIGH RODING**

Superior track life and ride for high roding needs

- Added tread volume with optimized tread bar geometry
- Enhanced carcass strength for better ride quality
- Provides up to 10% more surface area for extended track life



CAMSO  
**LOW GROUND DISTURBANCE**

Ideal solution in hay fields to maximize weight distribution and bring soil disturbance to a minimum

- Minimal berming
- Provides 40% more tread bar than standard tracks
- Surface contact is over 100% larger than an equivalent standard track

**TRACK TECHNICAL SPECIFICATIONS**

TRACK WIDTH (in.)	TRACK SERIES	PRODUCT FAMILY	PART NUMBER	OEM PART NUMBER	TREAD				GUIDE/DRIVE LUGS		CARCASS		
					Qty	Height (in.)	Tip width (in.)	Pitch (in.)	Qty	Length (in.)	Plies	Main cable size (mm)	Thickness (mm)
CAT Challenger 35/45/55	16	5500	General AG	650-1602	48 RH	2.6	2.25	6.8	48	4.8	4	5.4	39
	5500	General AG	650-1603	48 LH	2.6	2.25	6.8	48	4.8	4	5.4	39	
	3500	General AG	630-1601	96	2.6	1.5	6.8	36	5.5	3	5.4	31	
	NEW	2500	General AG	A16AH03302	96	2.1	2	6.8	36	5.5	3	5.4	29
	18	5500	General AG	650-1802	96	2.6	2.25	6.8	48	4.8	4	5.4	39
	5500	High roding	650-1842	48 RH	2.6	2.25	6.8	48	4.8	4	5.4	39	
	5500	High roding	650-1843	48 LH	2.6	2.25	6.8	48	4.8	4	5.4	39	
	5500	High traction	650-1841	72	2.6	1.5	9.0	48	4.8	4	5.4	39	
	3500	General AG	630-1801	96	2.6	1.5	6.8	36	5.5	3	5.4	31	
	NEW	2500	General AG	A18AH03303	96	2.1	2	6.8	36	5.5	3	5.4	29
	25	5500	General AG	650-2502	96	2.6	2.25	6.8	48	4.8	4	5.4	41
	4500	General AG	F25AQ02916	72	2.6	1.5	9.0	48	4.8	3	4.3	32	
	3500	General AG	630-2501	72	2.6	1.5	9.0	48	5.5	4	4.3	32	
	NEW	2500	General AG	A25AH03304	72	2.1	2	9	36	5.5	3	4.3	29
30	3500	General AG	630-3009	72	2.6	1.5	9.0	48	5.5	4	4.3	35	
NEW	2500	General AG	A30AH03305	72	2.1	2	9	36	5.5	4	4.3	32	
CAT Challenger 65/75/85/95	25	5500	General AG	652-2506	96	2.6	1.5	7.2	48	5.0	4	5.4	41
	3500	General AG	632-2529	74	2.6	1.5	9.3	36	6.2	3	4.3	36	
	NEW	2500	General AG	A25AB03311	74	2.3	1.6	9.3	36	5	3	4.3	34
	27.5	5500	General AG	652-2702	96	2.6	1.5	7.2	48	5.0	3	5.4	41
	5500	General AG	652-2713	96	2.6	1.5	7.2	48	5.0	4	5.4	41	
	5500	High roding	652-2714	96	2.6	1.9	7.2	48	5.0	4	5.4	41	
	4500	General AG	F27AL02917	74	2.6	1.5	9.3	48	5.0	3	4.3	34	
	3500	General AG	632-2711	74	2.6	1.5	9.3	36	6.2	3	4.3	36	
	3500	Low ground disturbance	632-2715	96	1.6	2.8	7.2	48	5.0	3	4.3	36	
	30	5500	General AG	652-3004	96	2.6	1.5	7.2	48	5.0	3	5.4	41
	5500	General AG	652-3055	96	2.6	1.5	7.2	48	5.0	4	5.4	41	
	5500	High traction	652-3049	74	2.6	1.5	9.3	48	5.0	4	5.4	41	
	5500	High roding	652-3052	96	2.6	1.9	7.2	48	5.0	4	5.4	41	
	4500	General AG	F30AL02918	74	2.6	1.5	9.3	48	5.0	3	4.3	34	
	3500	General AG	632-3048	74	2.6	1.5	9.3	36	6.2	3	4.3	36	
	3500	Low ground disturbance	632-3057	96	1.6	2.8	7.2	48	5.0	3	4.3	36	
NEW	2500	General AG	A30AB03312	74	2.3	1.6	9.3	36	5	4	4.3	34	

**Warranty:** Camso is the industry standard for warranty coverage on Agricultural tracks. Tracks are warrantied against defects in materials and workmanship, and prorated based on both time and usage, so customers receive fair value on warranty replacement tracks. Some conditions apply. Refer to the warranty certificate for details. For more info, visit [camso.co/agriculture](http://camso.co/agriculture)



# REPLACEMENT DRIVER, IDLER AND MIDROLLER WHEELS



Engineered based on OEM specifications

12-month material and workmanship defect warranty

## WHEEL TECHNICAL SPECIFICATIONS

PRODUCT FAMILY	CAMSO PART NUMBER	OEM PART NUMBER	COATING TYPE	MODEL/TRACK WIDTH COMPATIBILITY
<b>35/45/55</b>				
Midroller	4W-0232P	1R-1365	Rubber	All
Idler	1R-1204P	1R-1204	Rubber	All
Driver (RH)	1R-1230P	1R-1230	Rubber	All
Driver (LH)	1R-1231P	1R-1231	Rubber	All
<b>65/75/85/95</b>				
Midroller	4W-0240P	9U3384	Rubber	All
Idler	1R-1346P	1R-1346	Rubber	Solid Idler
Driver (RH)	1R-1184P	1R-1184	Rubber	Inboard Brake
Driver (LH)	1R-1185P	1R-1185	Rubber	Inboard Brake
Driver (RH)	1R-1347P	1R-1347	Rubber	Caliper Brake
Driver (LH)	1R-1348P	1R-1348	Rubber	Caliper Brake

